

Mass Layoff Events in Ohio

4th Quarter 2007

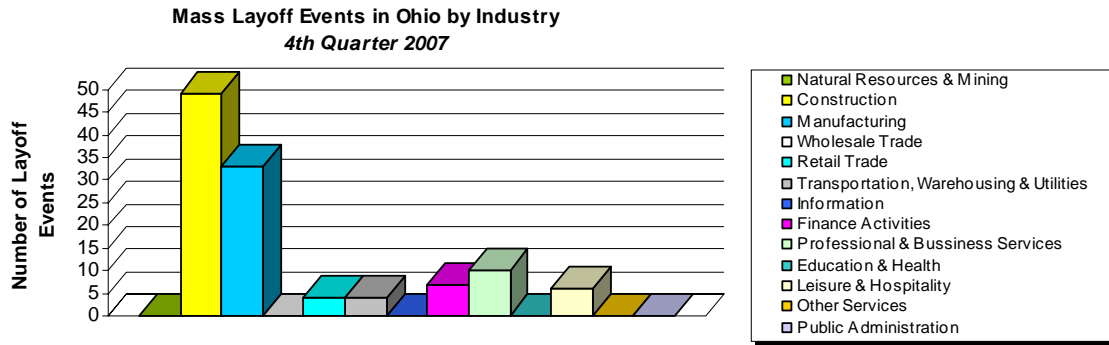
During the period October through December 2007, there were 116 mass layoff events in Ohio, a increase of 88 events over the 3rd Quarter of 2006. This resulted in 20,000 separations, a decrease of 2,570 from the 4th Quarter 2006 total of 22,570 separations. Included in the 116 events were 11 establishment closures/partial closures of single or multiple worksites with 3,978 separations. This compares to 19 establishment closures and 6,981 for a year ago.

Events by Industry

Manufacturing out paced all with 38% of the total number of mass layoff events and 28% of all separations. Construction followed with 32% of the total events and represented 42% of all separations.

Mass Layoff Events in Ohio by Industry 4th Quarter 2007 (final)					
Industry	Establishments with Mass Layoffs		Twelve Month Change	Workers Separated	
	Number	Percent	Percent	Number	Percent
Total	116	100%	21%	20,000	100%
<u>GOODS PRODUCING</u>					
Natural Resources & Mining	*	*	*	*	*
Construction	49	42%	32%	6,445	32%
Manufacturing	33	28%	14%	7,651	38%
Durable Goods	28	24%	33%	6,946	35%
Nondurable Goods	5	4%	-38%	705	4%
<u>SERVICE PROVIDING</u>					
Wholesale Trade	*	*	*	*	*
Retail Trade	4	3%	0%	976	5%
Transportation, Warehousing & Utilities	4	3%	33%	327	2%
Information	0	0%	0%	0	0%
Finance Activities	7	6%	133%	2,453	12%
Professional & Business Services	10	9%	25%	1,378	7%
Education & Health	0	0%	0%	0	0%
Leisure & Hospitality	6	5%	0%	550	3%
Other Services	0	0%	*	0	0%
Public Administration	0	0%	0%	0	0%

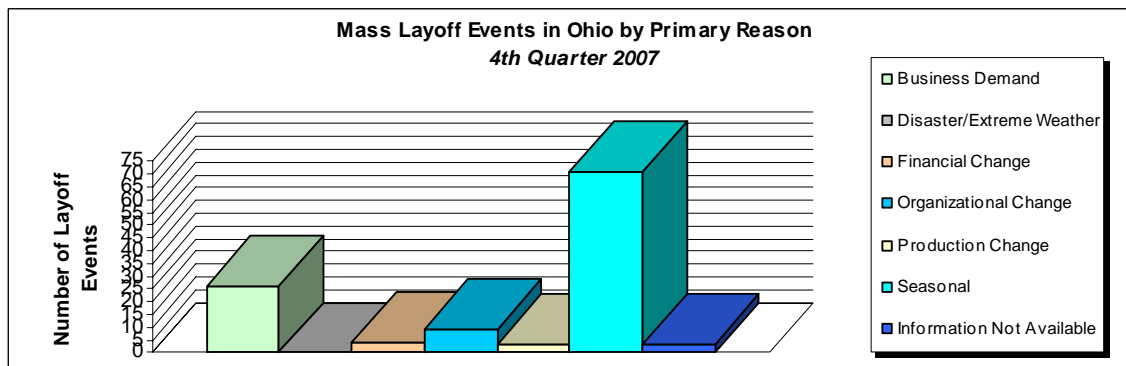
* Data suppressed for industries with less than three layoffs to protect confidentiality; establishment totals include suppressed industries.



Events by Primary Reason

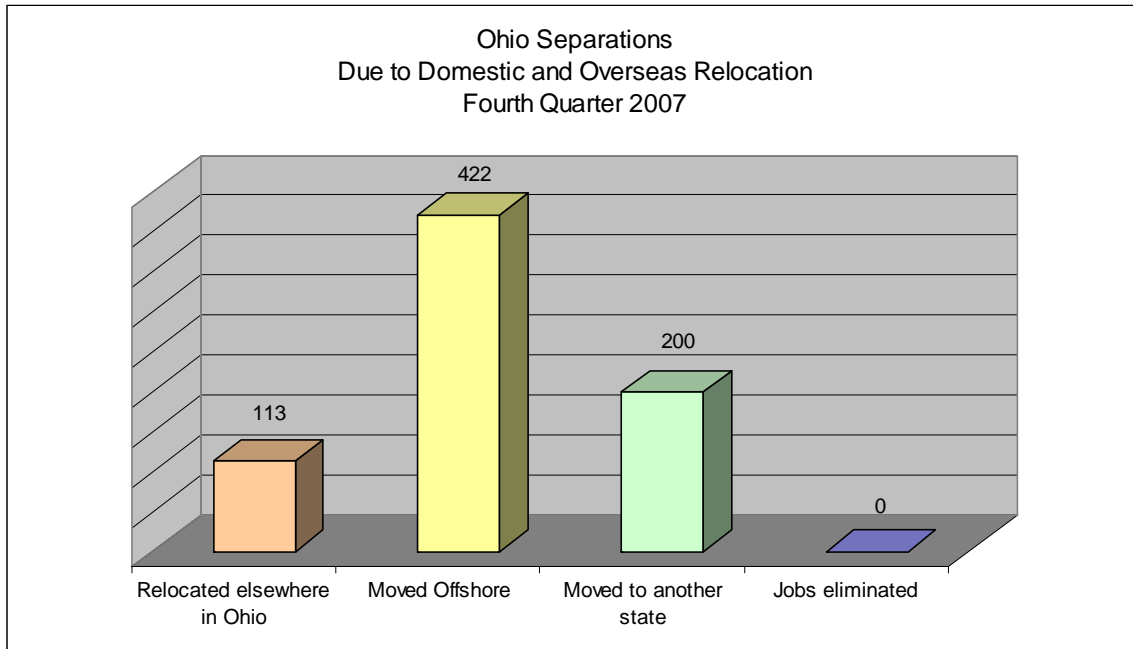
Seasonal events were responsible for 61% of all mass layoffs and 44% of all separations. Business demand accounted for 22% of all mass layoffs and 22% of all separations.

Primary Reason	Mass Layoffs		Workers Separated	
	Number	Percent	Number	Percent
Total	116	100%	20,000	100%
Business Demand	26	22%	4,322	22%
Disaster/Extreme Weather	0	0%	0	0%
Financial Change	4	3%	2,364	12%
Organizational Change	9	8%	3,567	18%
Production Change	3	3%	600	3%
Seasonal	71	61%	8,780	44%
Information Not Available	3	3%	367	2%

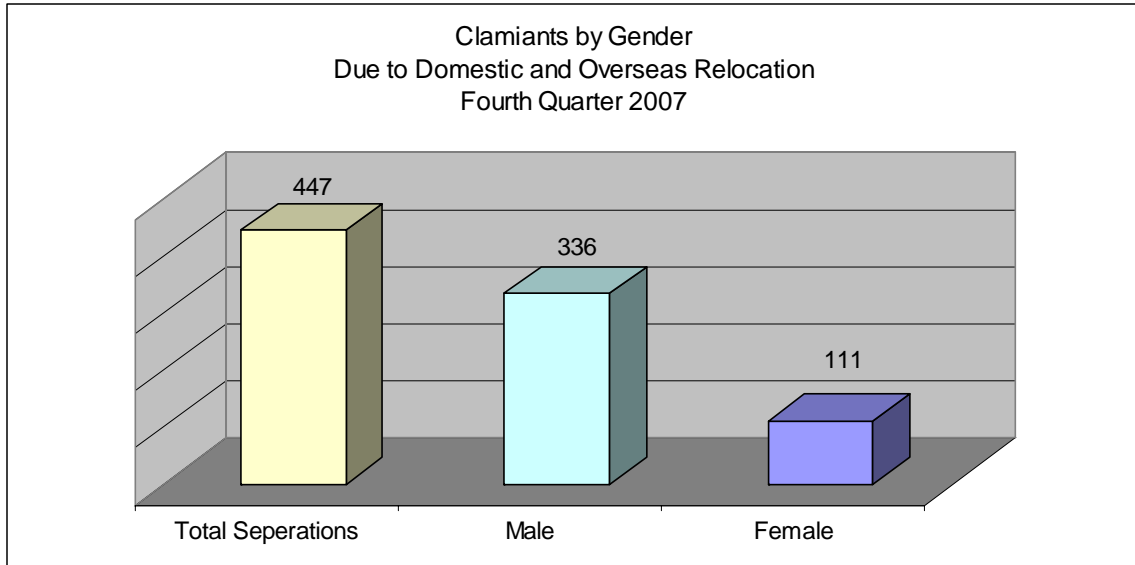


Movement of Work

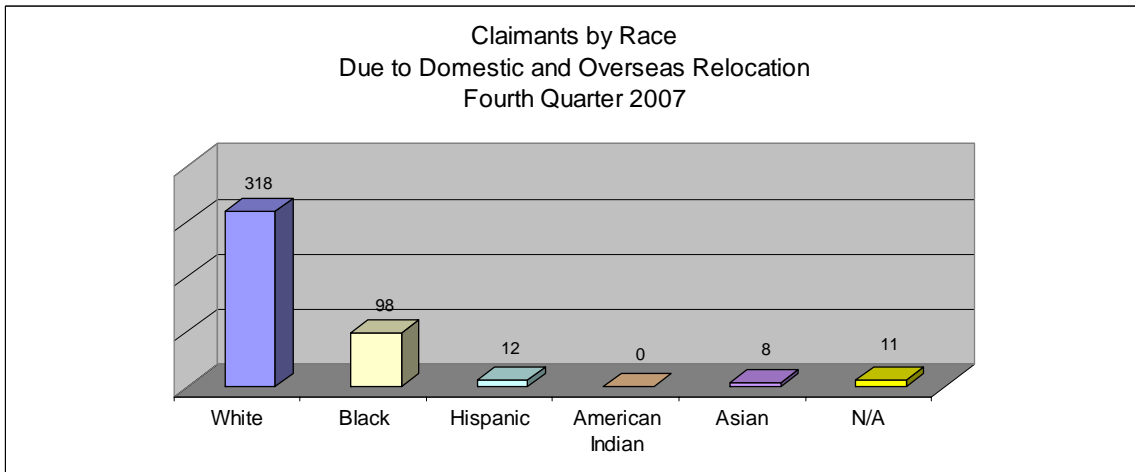
Of the 20,000 private sector non-farm workers who were reported separated from their jobs for at least 31 days in the fourth quarter of 2007, a total of 735 separations were associated with the movement of work. 57% of the jobs were relocated to another country and 27% were relocated to another state. These 735 separations were the result of 4 layoff events involving movement of work. The 4 layoff events were closures in Ohio and occurred in the Manufacturing sectors.



Of the 735 Ohio workers reported separated due to movement of work in the fourth quarter of 2007, demographic data was obtained for 447 workers who filed a claim for Unemployment Insurance. When divided by gender, 75% of the claimants were male and 25% were female.

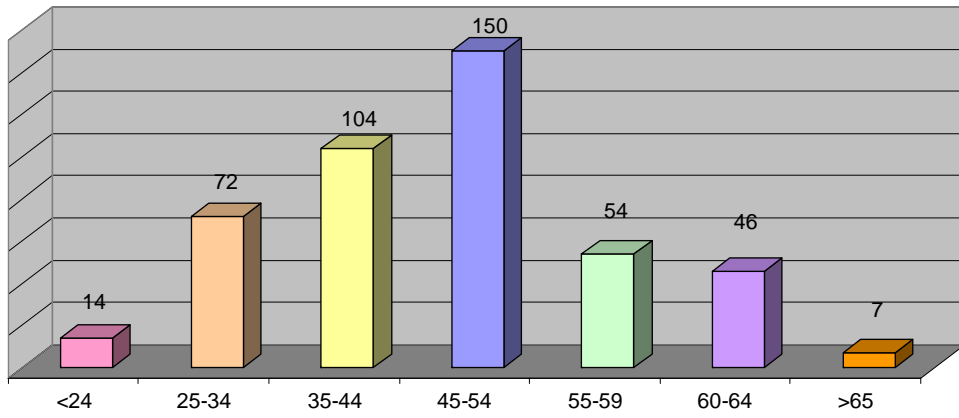


Racial affiliation was reported for 447 of the UI claimants. White workers accounted for 71% of claimants whose jobs were lost due to movement of work. Black workers made up 22%. These two groups formed 93% of total claimants.



Claimant between 45-54 years old accounted for 34% of all claims, followed by those between 35-44 years old and 25-34 years old accounting for 23% and 16% respectively. These three groups accounted for nearly three-quarters of all claims related to job relocation.

Claimants by Age
Due to Domestic and Overseas Relocations
Fourth Quarter 2007



Bureau of Labor Market Information
Ohio Dept. of Job & Family Services
Columbus, Ohio 5/29/2008