

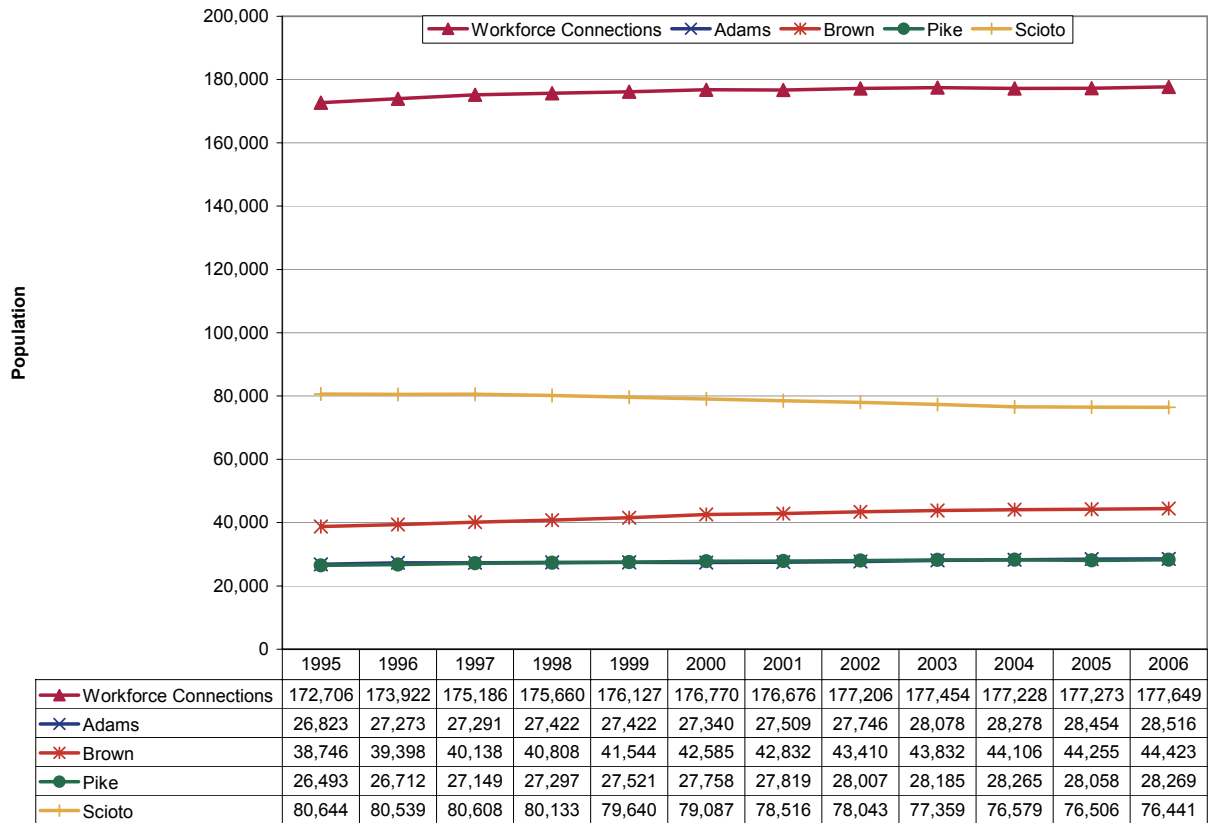
**Updates to Workforce Analysis Reports
Workforce Connections
July 2007**

This document contains updates to the Workforce Analysis report for the Workforce Connections area, published in March 2007. This area includes Adams, Brown, Pike and Scioto Counties. For additional information, please see the Technical Notes at the end of this document.

Table of Contents

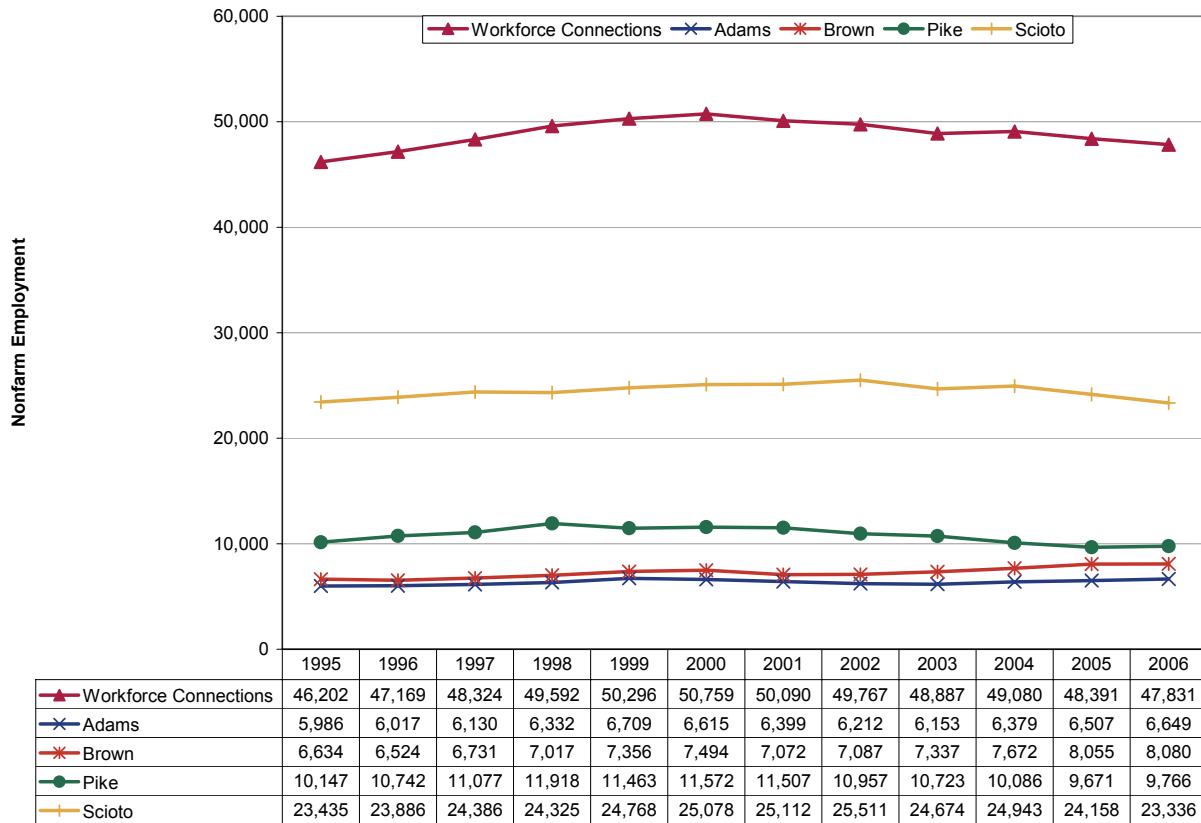
Trends Update	Update to Page
Population	3
Employment	4
Unemployment Rates	5
Per Capita Income.....	6
New Residential Building Permits	7

Population



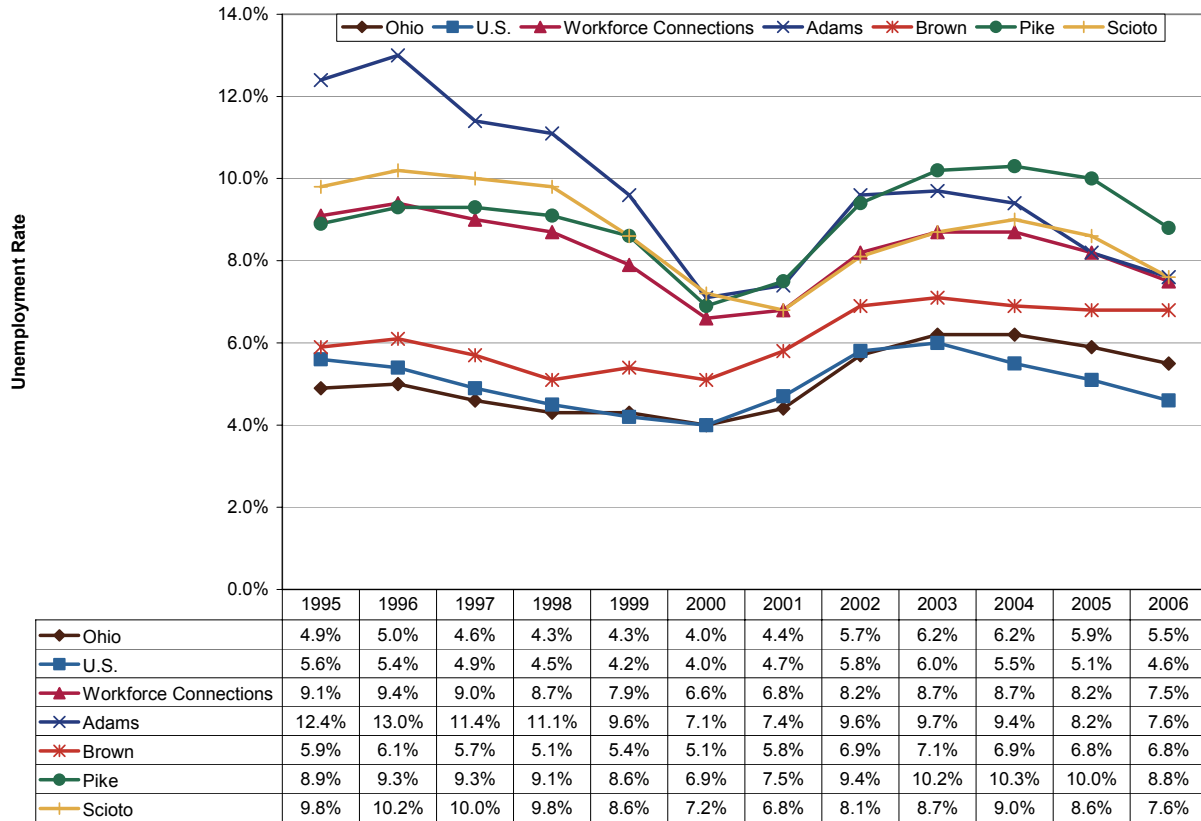
Population increased 2.9 percent from 1995 to 2006, reaching 177,600 residents by the end of this period. Brown County, a part of the Cincinnati metropolitan area, had the area's fastest growth at 14.7 percent. Scioto County, although the area's largest, was the only county to decline in population, falling 5.2 percent to about 76,400. By comparison, statewide population grew 2.5 percent during this period while national population increased by 12.4 percent.

Employment



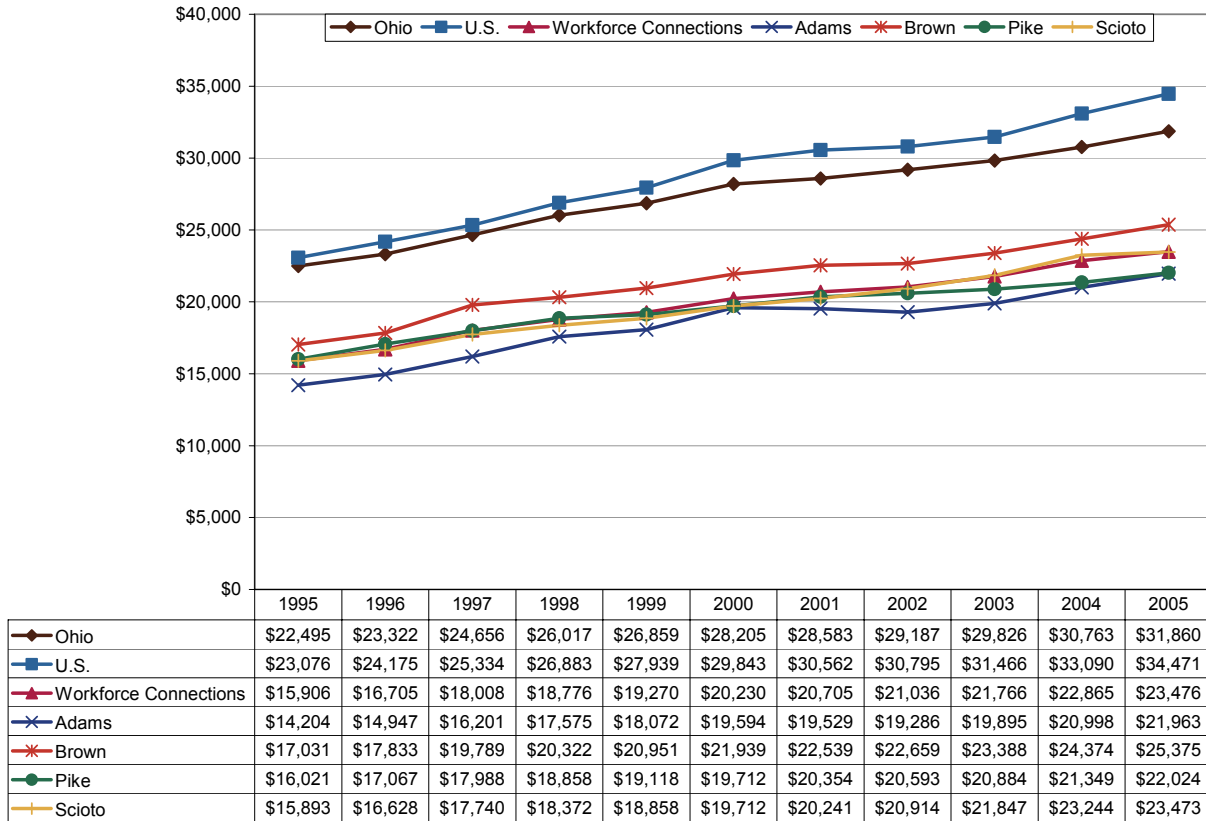
While the Workforce Connections area has added about 2,000 jobs in net from 1995 to 2006, this region has shed nearly 3,000 positions (-5.8%) since 2000. Most of these job losses occurred in Pike and Scioto Counties. Adams and Brown Counties both experienced employment growth, increasing 0.5 percent and 7.8 percent between 2000 and 2006, respectively. By comparison, Ohio nonfarm employment fell 3.5 percent during this period after a slight increase since 2003.

Unemployment Rates



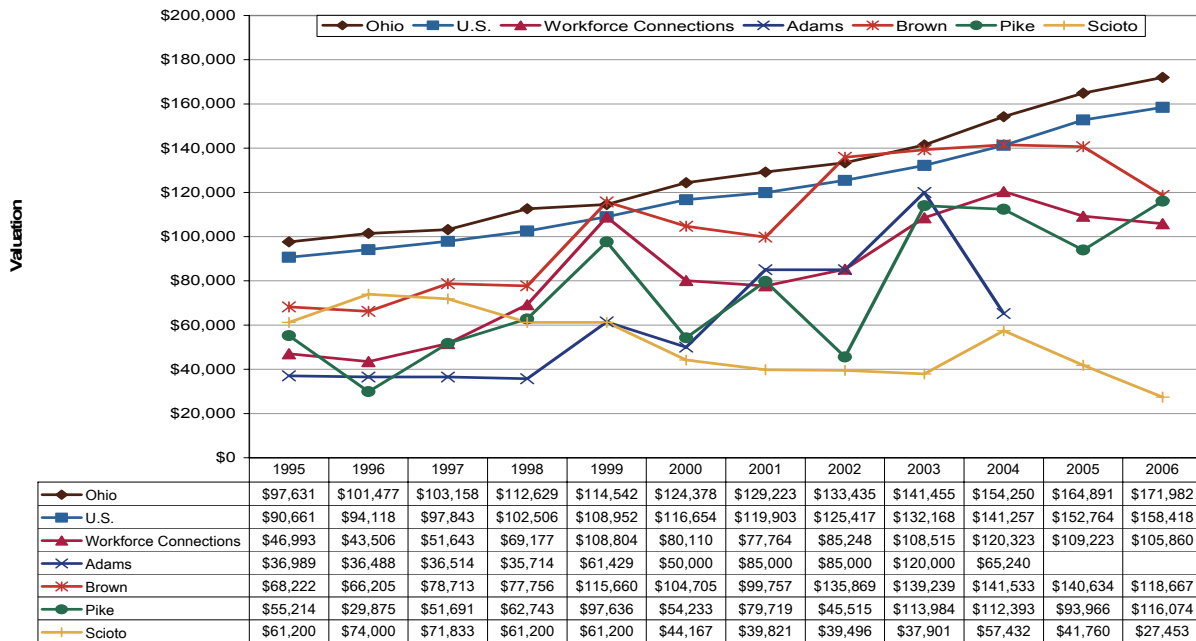
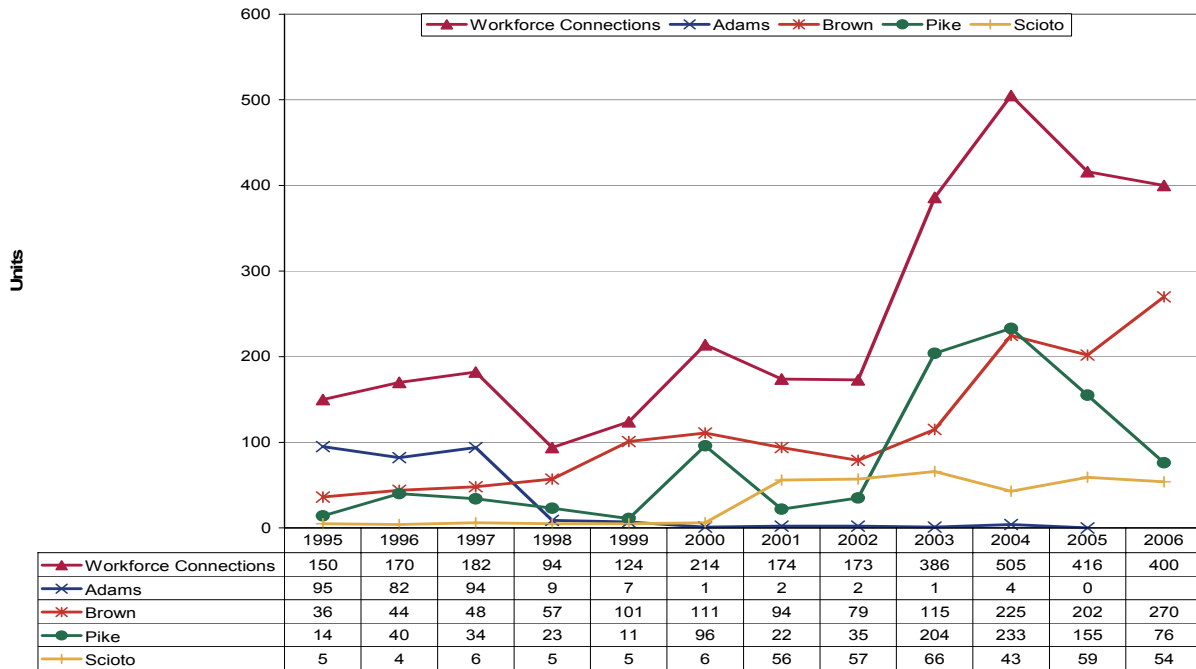
The area's combined unemployment rate in 2006 was 7.5 percent, two points higher than the state rate but 1.2 points lower than its last peak in 2003. From 1995 to 2006, Brown County—part of the Cincinnati metropolitan area—has had the lowest unemployment rate: 6.8 percent in 2006. In the last economic cycle, Pike County has had the area's highest rate: 8.8 percent in 2006. The Ohio and U.S. unemployment rates fell 0.7 and 1.4 percentage points from their peaks in 2003, respectively.

Per Capita Income



Area per capita income in 2005 was \$23,476. This represents a 4.0 percent annual compound rate of growth between 1995 and 2005, just slightly lower than national growth. Adams County had the fastest rate of income growth (4.5%) while Pike County had the slowest growth (3.2%). State and national growth rates were 3.5 percent and 4.1 percent, respectively.

Residential Building Permits



The region saw a building boom peak in 2004, led mostly by Brown and Pike Counties, while construction in Adams County has been low with no permits reported in 2005 and 2006. Brown County generally had the area's most highly-valued housing units. The volatility of trends shown in average valuation are usually due to the mix from year-to-year of single and multi-family permits. Nationwide, there was a significant drop in the number of residential building permits granted from 2005 to 2006. The number of Ohio permits began to drop in 2004.

Technical Notes

For a map of Ohio's Workforce Investment system, please visit <http://lmi.state.oh.us/maps/MapofOneStops.htm>.

All population figures are annual estimates by the U.S. Census Bureau, published on the Internet as of May 2007. Analysts at the Ohio Bureau of Labor Market Information (LMI) summed county population to produce totals for local regions. Please visit <http://www.census.gov/popest/estimates.php> for additional information.

Employment figures are from the Quarterly Census of Employment and Wages by the U.S. Bureau of Labor Statistics (BLS) and LMI, published on the Internet in 2007. 2006 figures are based on preliminary quarterly data posted on the Labor Market Info Classic site and subject to revision this fall. Federal government employment, which is not covered by Ohio's unemployment compensation system, had inadvertently been omitted from the totals for 1995-1998 in the original report. That has been corrected in this update. In most counties the difference was negligible. Please visit http://lmi.state.oh.us/cep/CEP_NAICS.htm#Publications for additional statistics.

All unemployment figures are annualized, non-seasonally adjusted estimates by the Local Area Unemployment Statistics (LAUS) Section of LMI, published on the Internet as of May 2007. For additional statistics, please visit <http://lmi.state.oh.us/ASP/LAUS/vbLaus.htm>.

Per capita income figures for counties are in nominal dollars (not adjusted for inflation) and were published April 26, 2007 by the U.S. Bureau of Economic Analysis (BEA). Analysts at LMI calculated income figures for WIAs. For more information, please visit <http://www.bea.gov/regional/index.htm#state>.

Construction data are reported by the U.S. Census Bureau and are available through the Ohio Department of Development, Office of Strategic Research at http://www.odod.state.oh.us/research/Reports_in_population_and_housing-Housing_reports.htm#P6. Analysts at LMI calculated summary data for WIAs. Data are also available at <http://www.census.gov/const/www/permitsindex.html>.