

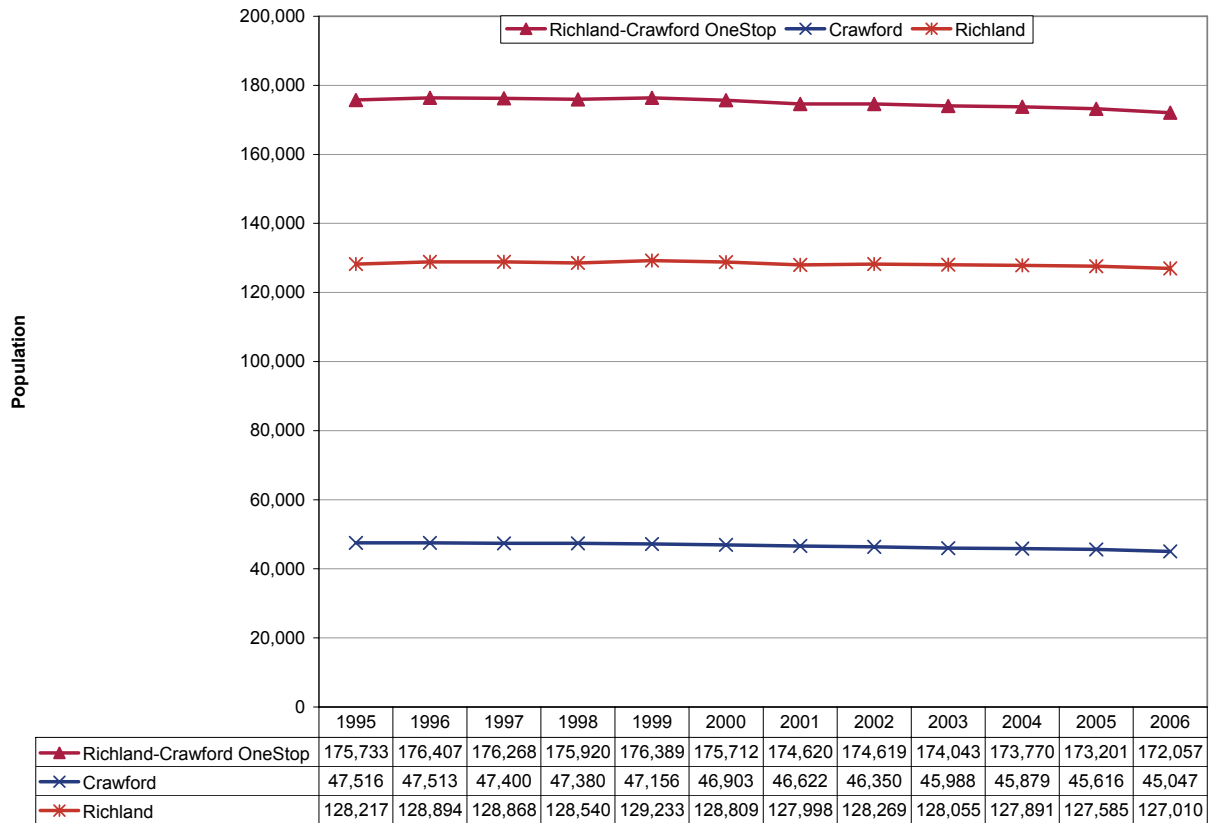
**Updates to Workforce Analysis Reports
Richland-Crawford OneStop
July 2007**

This document contains updates to the Workforce Analysis report for the Richland-Crawford OneStop, published in April 2007. This area includes Crawford and Richland Counties. For additional information, please see the Technical Notes at the end of this document.

Table of Contents

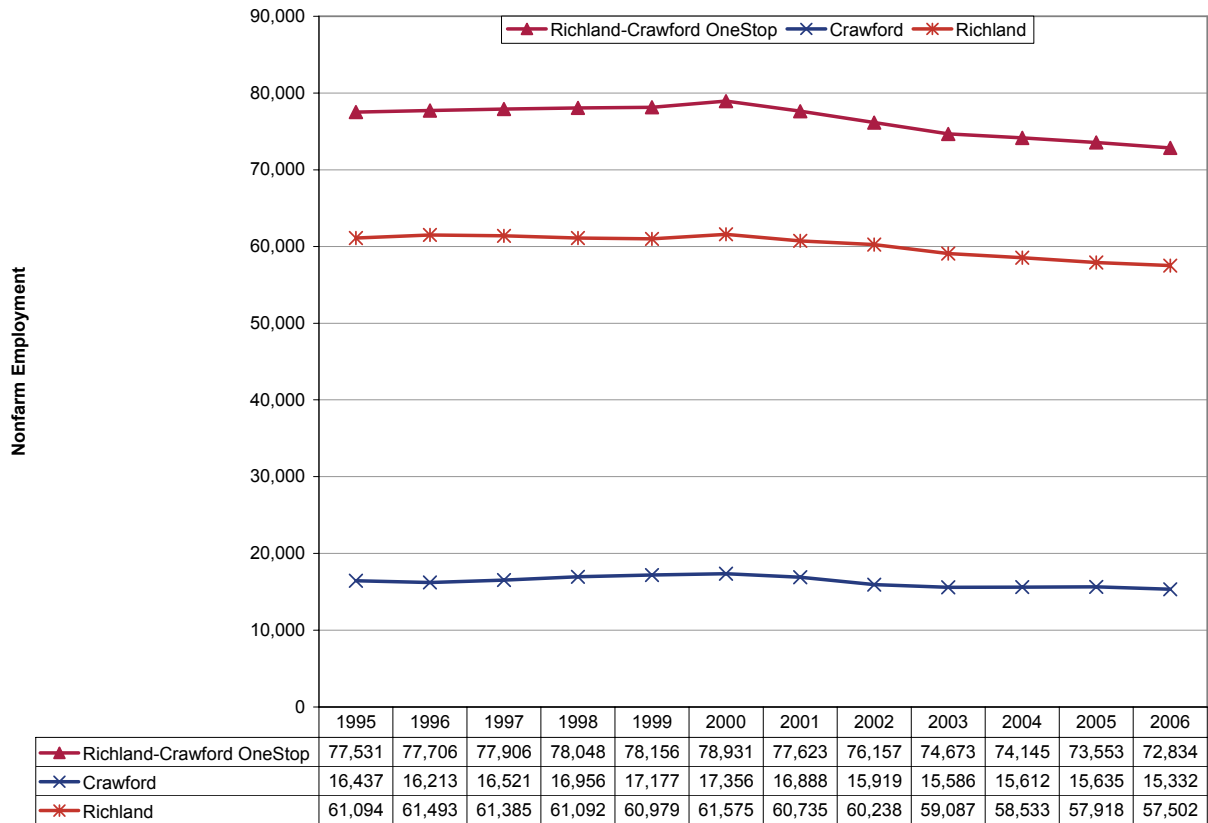
Trends Update	Update to Page
Population	3
Employment	4
Unemployment Rates	5
Per Capita Income.....	6
New Residential Building Permits	7

Population



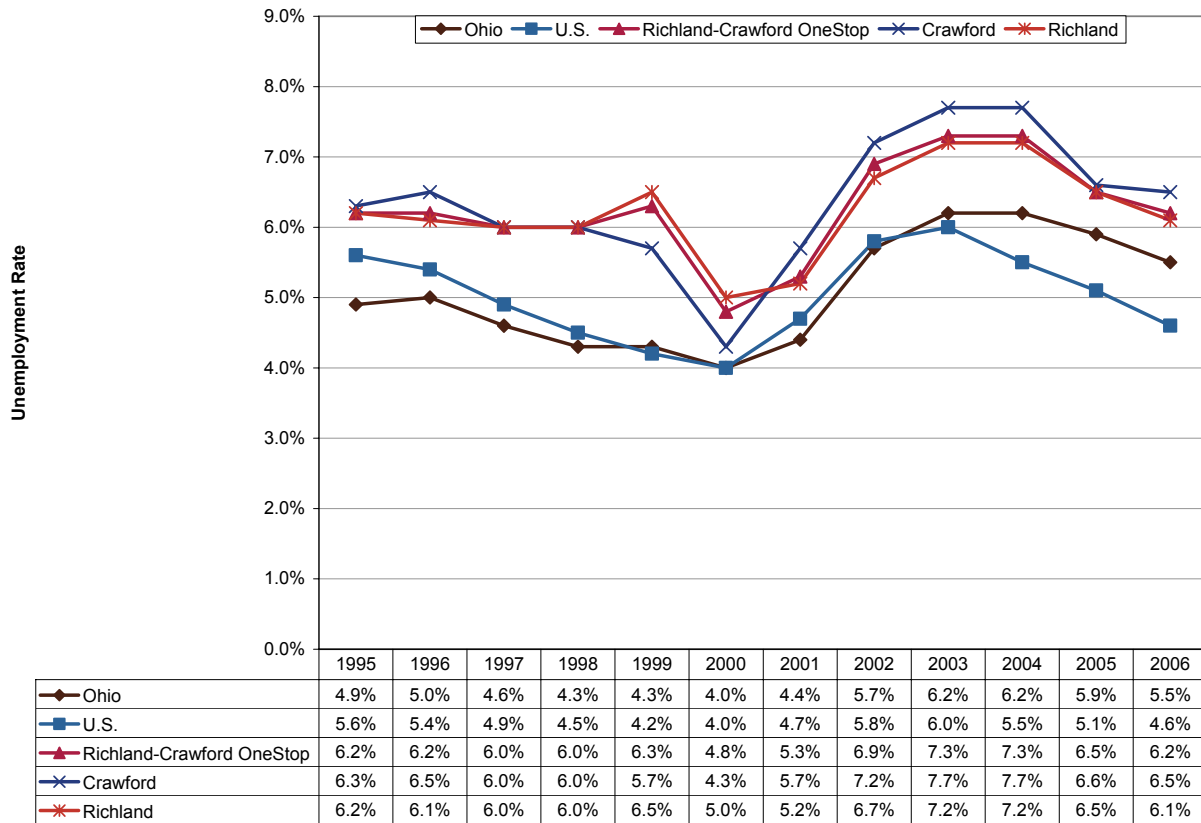
Combined population in 2006 was 172,100, a drop of 2.1 percent from 1995. Crawford County's population fell 5.2 percent to 45,000 during this period while Richland County—which is the Mansfield metropolitan area—lost 0.9 percent of its residents, dropping to 127,000. By comparison, statewide population grew 2.5 percent during this period while national population increased by 12.4 percent.

Employment



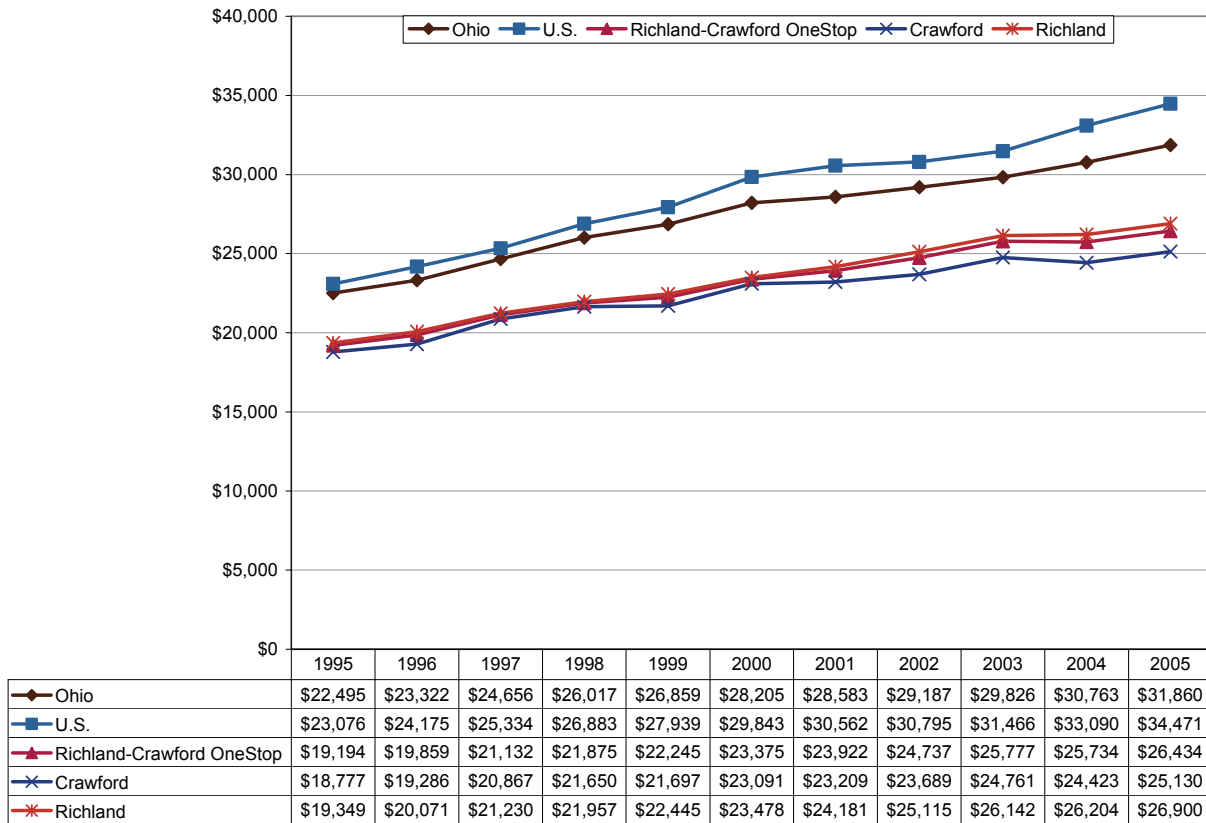
Since 2000, employment in the OneStop area has fallen 7.7 percent to just under 73,000 jobs. Both of these counties lost jobs during this period: about 2,000 jobs in Crawford County (-11.7%) and 4,000 jobs in Richland County (-6.6%). By comparison, Ohio nonfarm employment fell 3.5 percent from 2000 to 2006 after slight gains since 2003.

Unemployment Rates



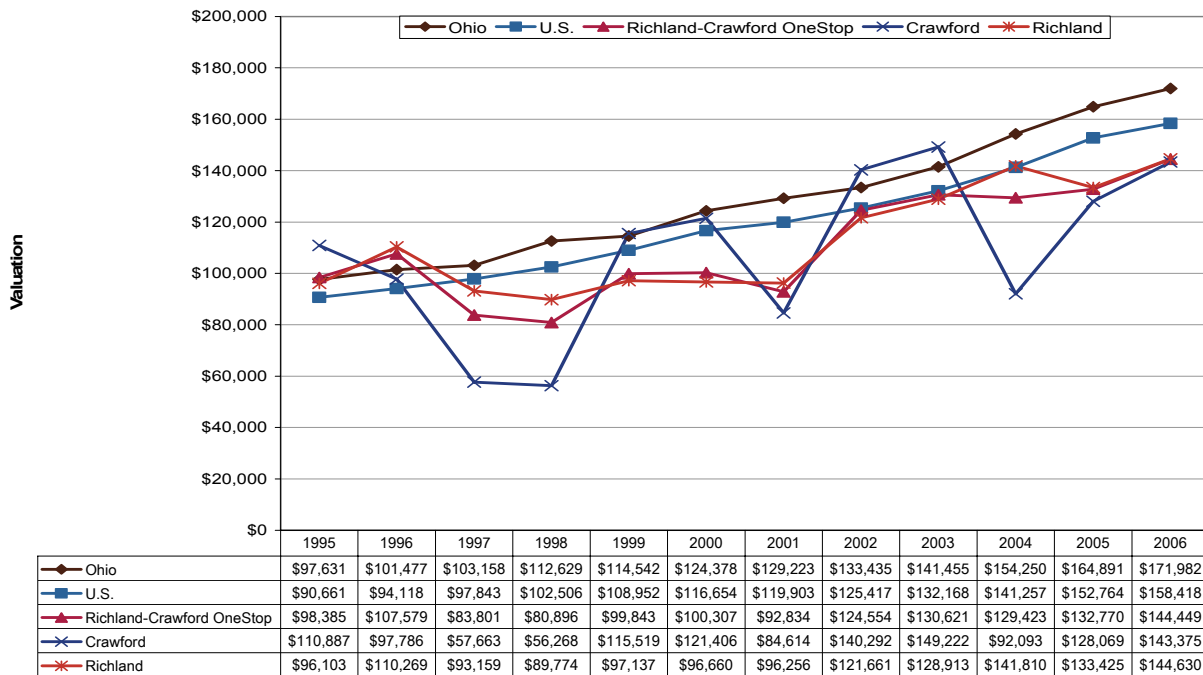
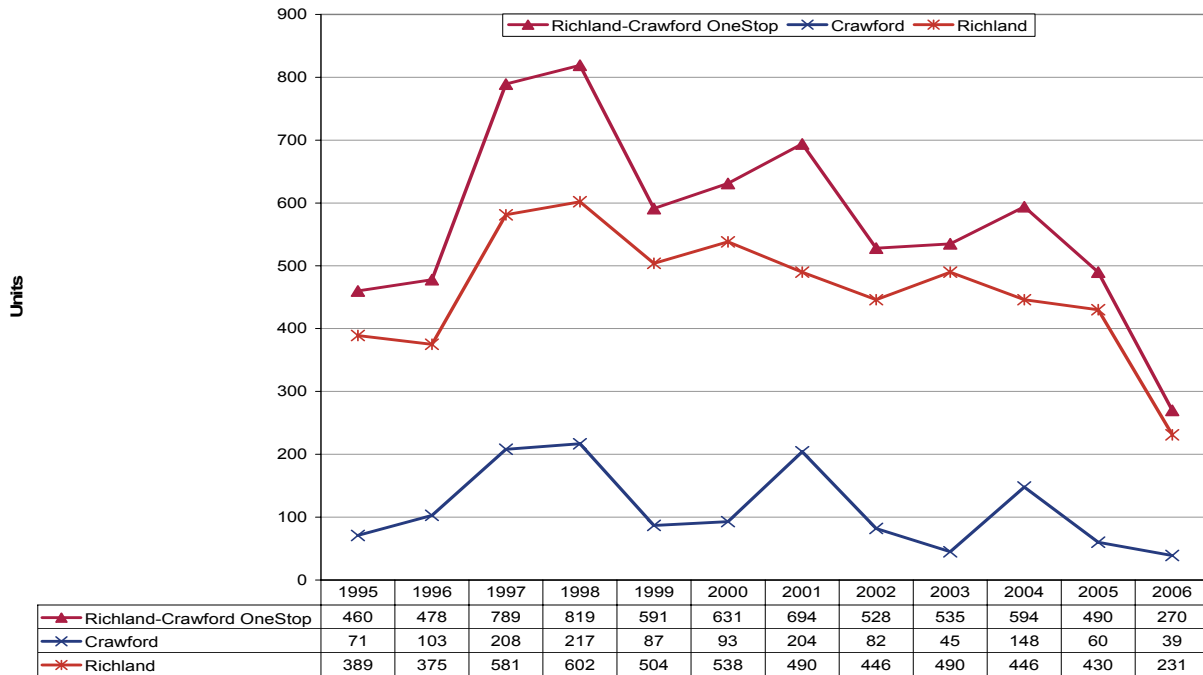
The unemployment rate for this region in 2006 was 6.2 percent, a drop of 1.1 percentage points from the peak in 2004. Both of the counties in this area had relatively similar unemployment rates between 1995 and 2006. Crawford County's unemployment rate fell 1.2 points since 2004 while Richland County dropped 1.1 points. The Ohio and U.S. unemployment rates fell 0.7 and 1.4 percentage points, respectively, from their peaks in 2003.

Per Capita Income



Per capita income for this area was \$26,434 in 2005, an average annual compound growth rate of 3.3 percent from 1995. Richland County generally had higher per capita income levels during this period than Crawford County. Urban areas tend to have higher income levels than rural areas. Richland County's income also grew faster than Crawford County's: 3.3 percent per year. State and national growth rates were 3.5 percent and 4.1 percent, respectively.

Residential Building Permits



The number of permits for new residential construction in this region has dropped sharply the last two years. Ohio permits began to decline in 2004. Nationwide, there was a significant drop in the number of residential building permits granted from 2005 to 2006. The average valuation of housing units has been trending upward, but with sharp fluctuations, particularly in Crawford County. These swings are typically due to the mix of single- and multi-family units in any given year.

Technical Notes

For a map of Ohio's Workforce Investment system, please visit <http://lmi.state.oh.us/maps/MapofOneStops.htm>.

All population figures are annual estimates by the U.S. Census Bureau, published on the Internet as of May 2007. Analysts at the Ohio Bureau of Labor Market Information (LMI) summed county population to produce totals for local regions. Please visit <http://www.census.gov/popest/estimates.php> for additional information.

Employment figures are from the Quarterly Census of Employment and Wages by the U.S. Bureau of Labor Statistics (BLS) and LMI, published on the Internet in 2007. 2006 figures are based on preliminary quarterly data posted on the Labor Market Info Classic site and subject to revision this fall. Federal government employment, which is not covered by Ohio's unemployment compensation system, had inadvertently been omitted from the totals for 1995-1998 in the original report. That has been corrected in this update. In most counties the difference was negligible. Please visit http://lmi.state.oh.us/cep/CEP_NAICS.htm#Publications for additional statistics.

All unemployment figures are annualized, non-seasonally adjusted estimates by the Local Area Unemployment Statistics (LAUS) Section of LMI, published on the Internet as of May 2007. For additional statistics, please visit <http://lmi.state.oh.us/ASP/LAUS/vbLaus.htm>.

Per capita income figures for counties are in nominal dollars (not adjusted for inflation) and were published April 26, 2007 by the U.S. Bureau of Economic Analysis (BEA). Analysts at LMI calculated income figures for WIAs. For more information, please visit <http://www.bea.gov/regional/index.htm#state>.

Construction data are reported by the U.S. Census Bureau and are available through the Ohio Department of Development, Office of Strategic Research at http://www.odod.state.oh.us/research/Reports_in_population_and_housing-Housing_reports.htm#P6. Analysts at LMI calculated summary data for WIAs. Data are also available at <http://www.census.gov/const/www/permitsindex.html>.