

Updates to Workforce Analysis Reports
JOB LEADERS
July 2007

This document contains updates to the Workforce Analysis report for the JOB LEADERS area, published in April 2007. This is the Workforce Investment Area for Franklin County. For additional information, please see the Technical Notes at the end of this document.

Table of Contents

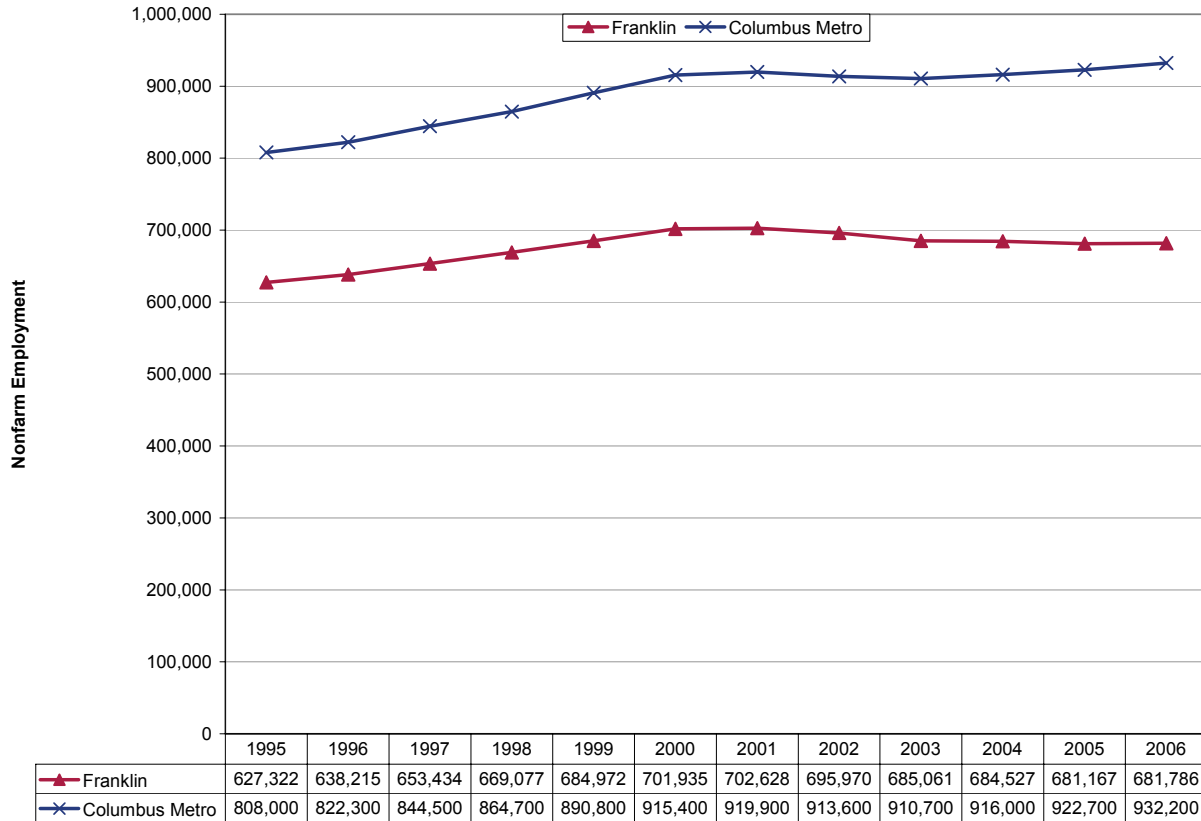
Trends Update	Update to Page
Population	3
Employment	4
Unemployment Rates	5
Per Capita Income.....	6
New Residential Building Permits	7

Population



Between 1995 and 2006, population increased 6.8 percent to nearly 1.1 million residents. For comparison, the Columbus metropolitan area population grew 13.6 percent over this time frame. Much of the metropolitan area's growth has been driven by expansion in Delaware and Fairfield Counties. Statewide population grew 2.5 percent during this period while national population increased by 12.4 percent.

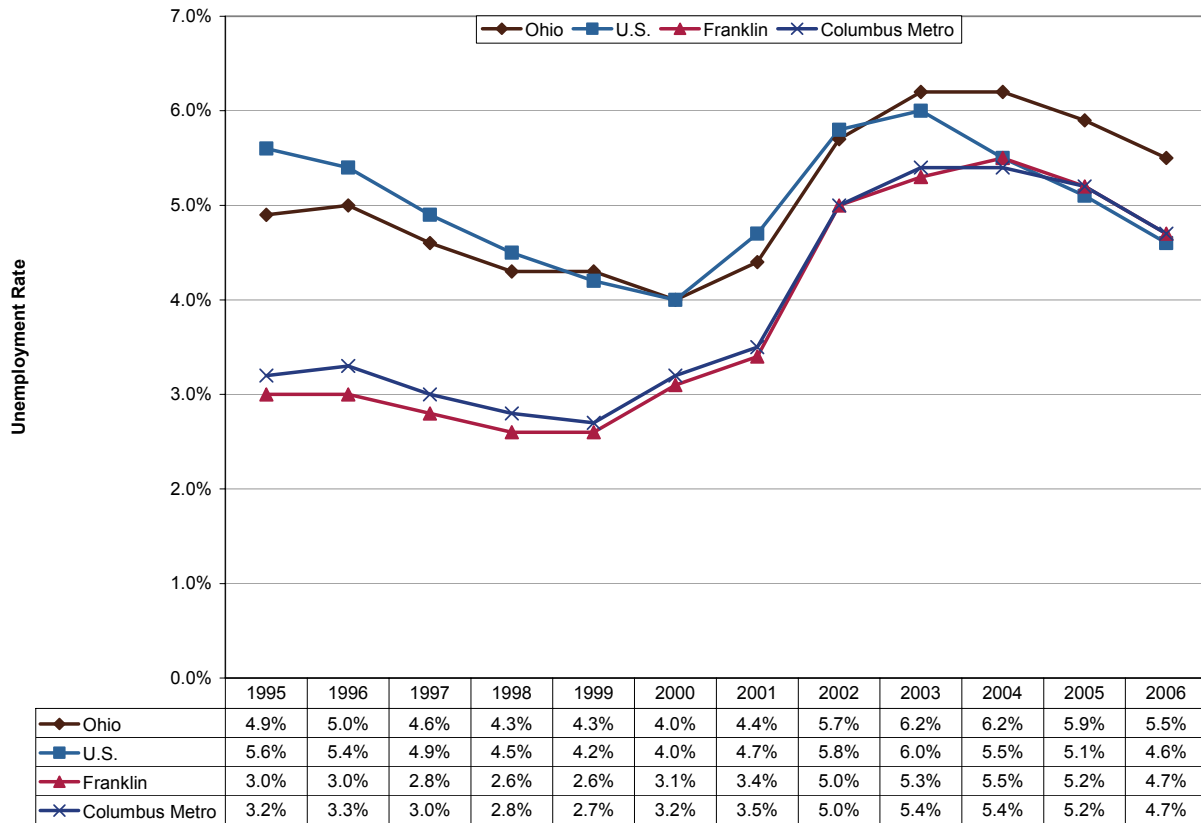
Employment



After strong employment gains during the record economic expansion of the late 1990s, Franklin County lost over 20,000 jobs from 2000 to 2006 (-2.9%). In the last year, employment has risen slightly. The Columbus metropolitan area, after experiencing its own employment slump, grew 1.8 percent during this same period.¹ As with population, employment in the metropolitan area was bolstered by strong growth in outlying counties. By comparison, Ohio nonfarm employment fell 3.5 percent from 2000 to 2006 after small increases since 2003.

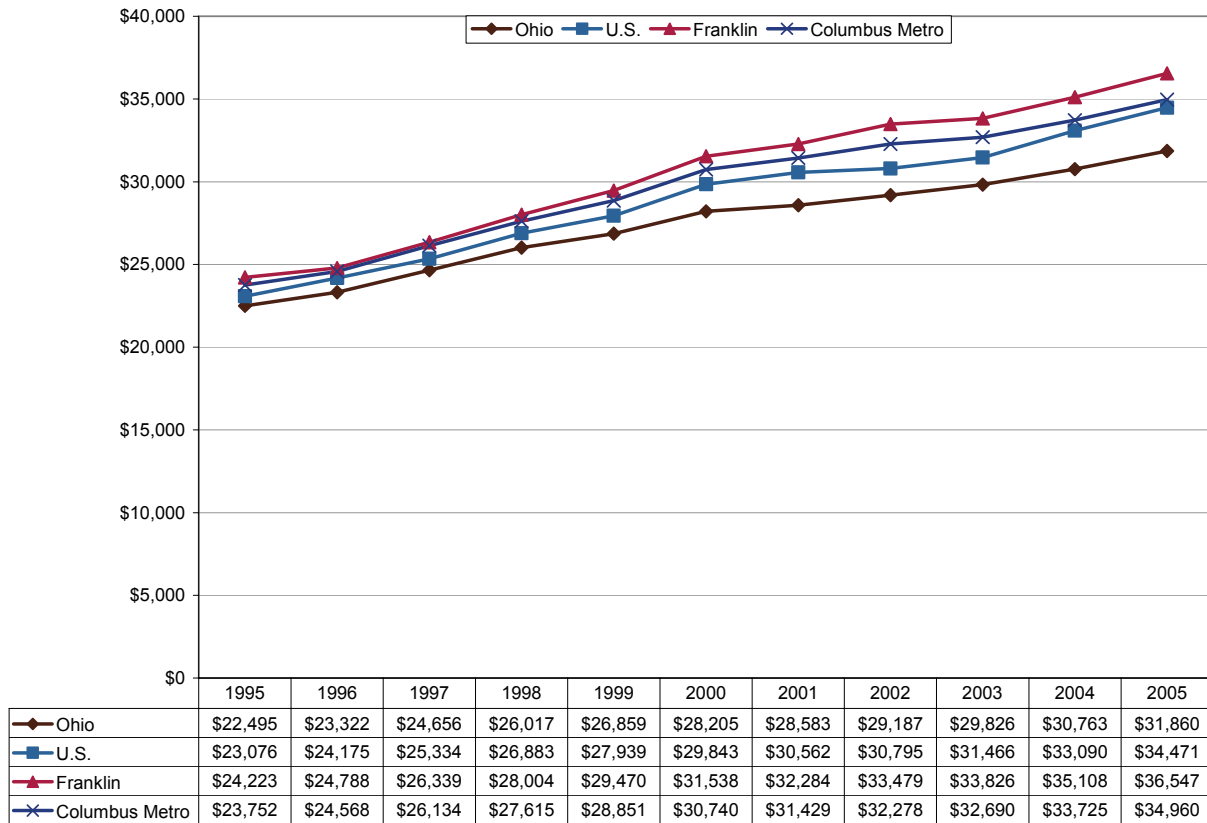
¹ The source of data for the Columbus metropolitan is the Current Employment Statistics (CES) program. See Technical Notes for details.

Unemployment Rates



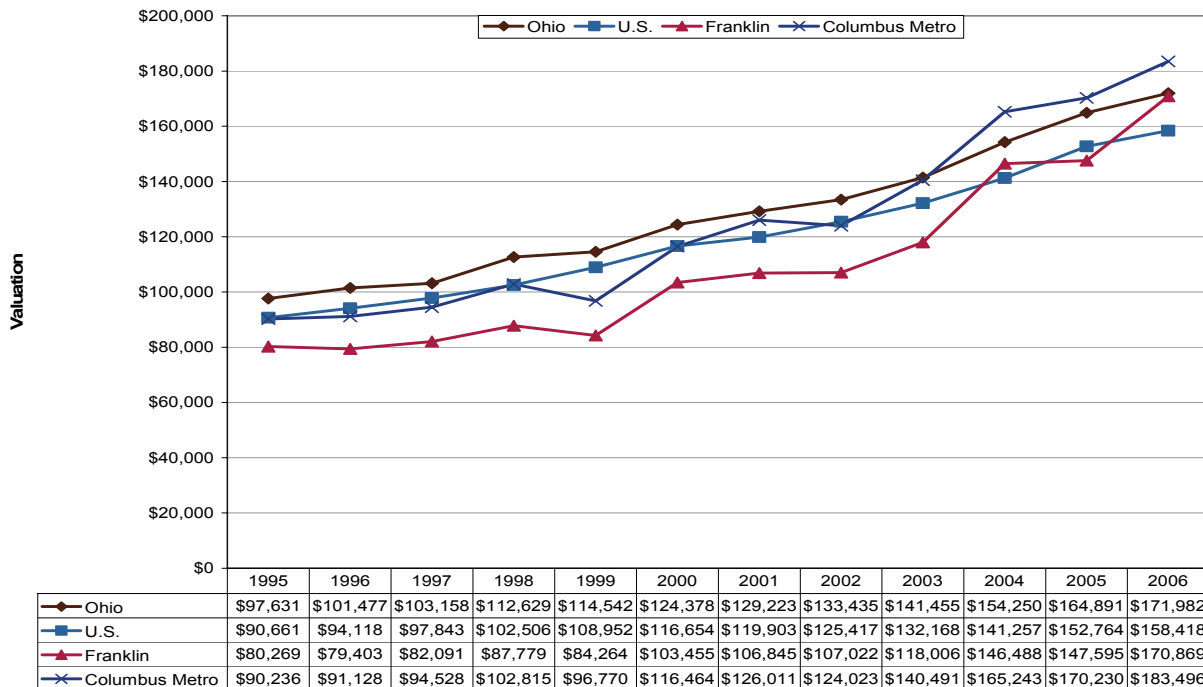
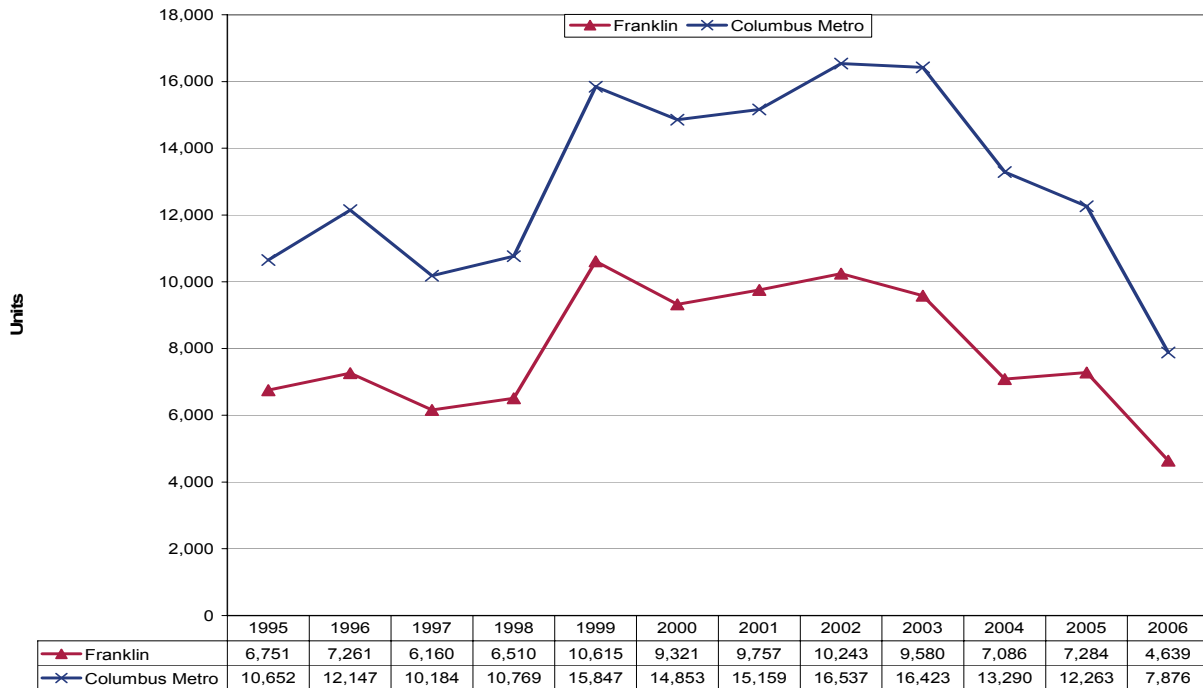
Unemployment trends in both the county and the Columbus metropolitan area have been highly similar between 1995 and 2006. The unemployment rate for Franklin County in 2006 was 4.7 percent, having fallen 0.8 percentage point from the high point in 2004 and well below the statewide rate of 5.5 percent. The Ohio and U.S. unemployment rates fell 0.7 and 1.4 percentage points, respectively, from their peaks in 2003.

Per Capita Income



Per capita income in Franklin County in 2005 was \$36,547 and grew at a 4.2 percent average annual compound rate from 1995. This has been a faster rate of growth than the 3.9 percent for the Columbus metropolitan area during the same time frame. State and national growth rates were 3.5 percent and 4.1 percent, respectively.

Residential Building Permits



While average valuation has shown a general upward trend, the number of permits for new residential construction has fallen significantly since 2003. Ohio permits also began to decline in 2004. Nationwide, there was a significant drop in the number of residential building permits granted from 2005 to 2006. Franklin County accounted for 58.9 percent of metropolitan construction activity in 2006.

Technical Notes

For a map of Ohio's Workforce Investment system, please visit <http://lmi.state.oh.us/maps/MapofOneStops.htm>.

All population figures are annual estimates by the U.S. Census Bureau, published on the Internet as of May 2007. Analysts at the Ohio Bureau of Labor Market Information (LMI) summed county population to produce totals for local regions. Please visit <http://www.census.gov/popest/estimates.php> for additional information.

Employment figures for Franklin County are from the Quarterly Census of Employment and Wages (QCEW) by the U.S. Bureau of Labor Statistics (BLS) and LMI, published on the Internet in 2007. 2006 figures are based on preliminary quarterly data posted on the Labor Market Info Classic site and subject to revision this fall. Federal government employment, which is not covered by Ohio's unemployment compensation system, had inadvertently been omitted from the totals for 1995-1998 in the original report. That has been corrected in this update. In most counties the difference was negligible. Please visit http://lmi.state.oh.us/cep/CEP_NAICS.htm#Publications for additional statistics.

Employment figures for the Columbus Metropolitan Statistical Area are from the Current Employment Statistics (CES) program by the BLS and LMI, published on the Internet in 2007. Please visit <http://lmi.state.oh.us/ces/lmr.htm#AnnualAverages> for additional statistics.

All unemployment figures are annualized, non-seasonally adjusted estimates by the Local Area Unemployment Statistics (LAUS) Section of LMI, published on the Internet as of May 2007. For additional statistics, please visit <http://lmi.state.oh.us/ASP/LAUS/vbLaus.htm>.

Per capita income figures for counties are in nominal dollars (not adjusted for inflation) and were published April 26, 2007 by the U.S. Bureau of Economic Analysis (BEA). Analysts at LMI calculated income figures for WIAs. For more information, please visit <http://www.bea.gov/regional/index.htm#state>.

Construction data are reported by the U.S. Census Bureau and are available through the Ohio Department of Development, Office of Strategic Research at http://www.odod.state.oh.us/research/Reports_in_population_and_housing-Housing_reports.htm#P6. Analysts at LMI calculated summary data for WIAs. Data are also available at <http://www.census.gov/const/www/permitsindex.html>.