

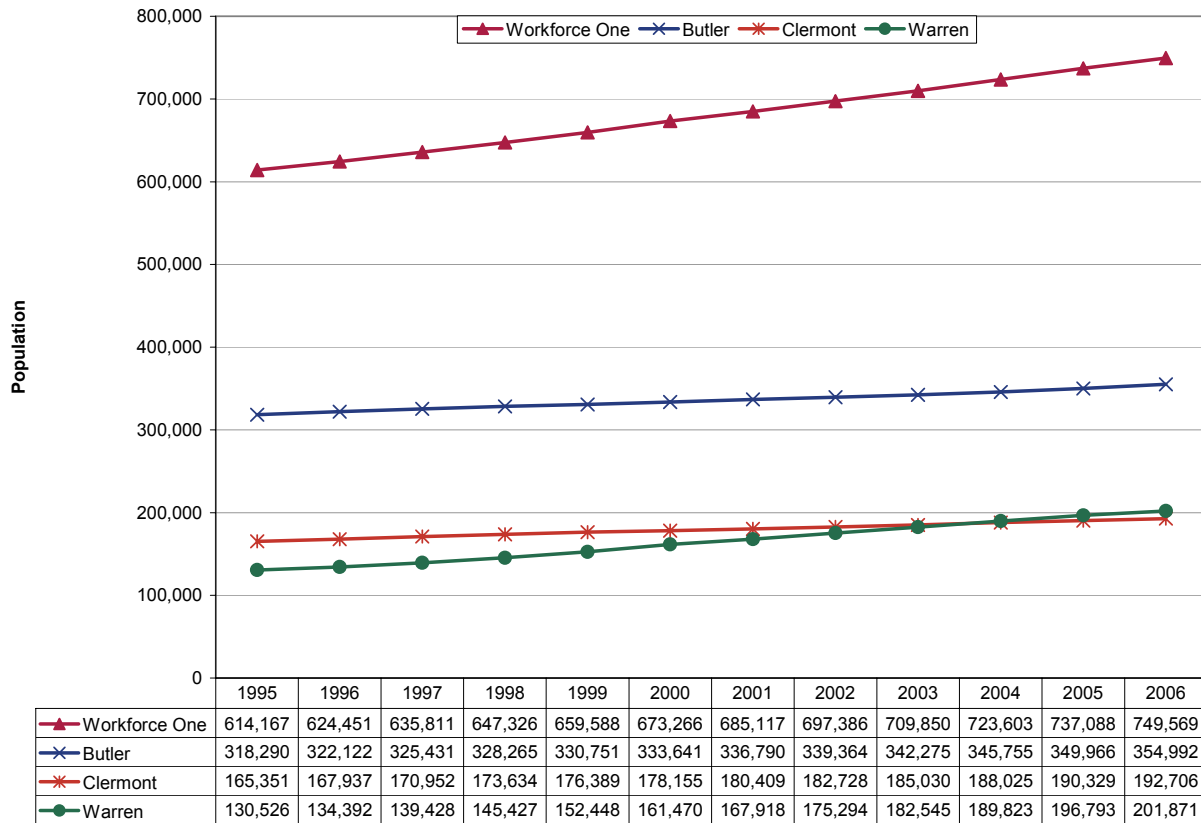
**Updates to Workforce Analysis Reports
Workforce One
July 2007**

This document contains updates to the Workforce Analysis report for Workforce One, published in April 2007. This area includes Butler, Clermont and Warren Counties. For additional information, please see the Technical Notes at the end of this document.

Table of Contents

Trends Update	Update to Page
Population	3
Employment	4
Unemployment Rates	5
Per Capita Income.....	6
New Residential Building Permits	7

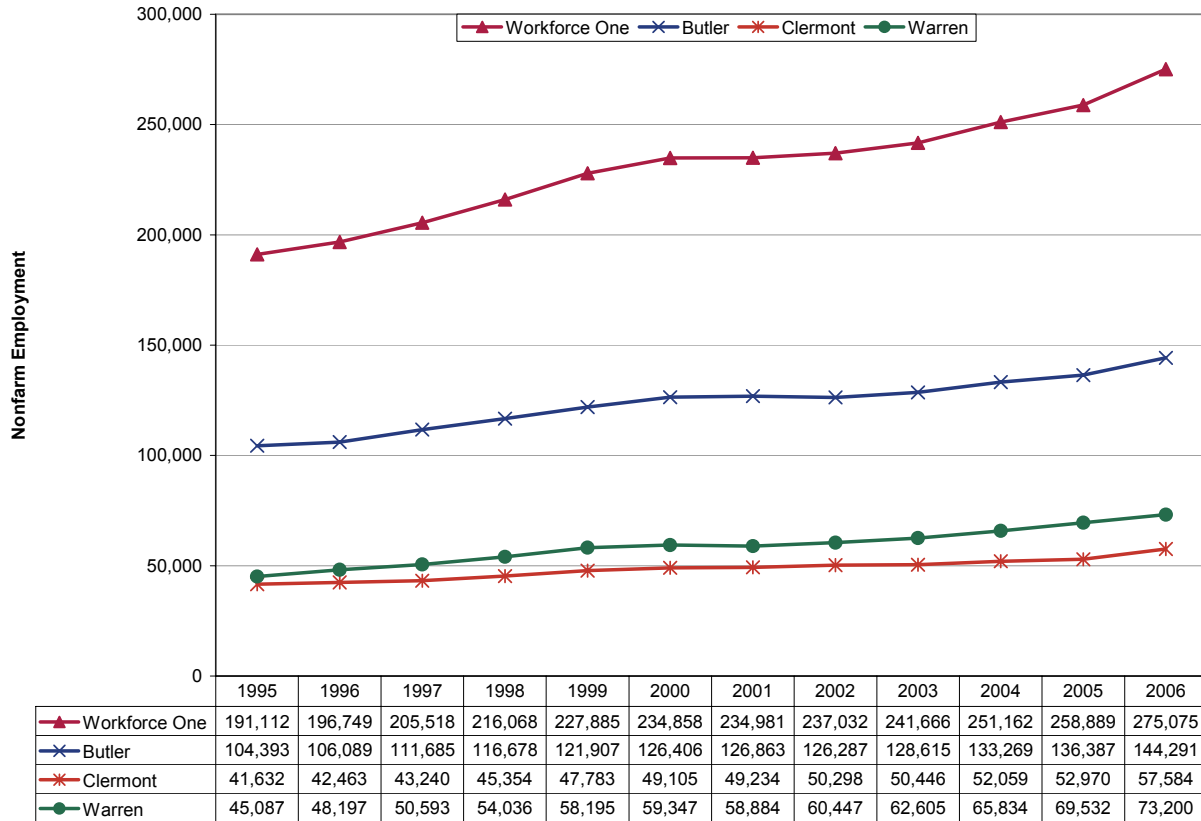
Population



Combined population in 2006 was 749,600, a 22.0 percent increase from 1995. Between 2000 and 2006, Warren County was one of the 100 fastest-growing counties in America.¹ Population in this county increased 54.7 percent from 1995 to 2006, reaching 201,900. Population in Butler and Clermont Counties also had strong growth: 11.5 percent and 16.5 percent, respectively. By comparison, statewide population grew 2.5 percent during this period while national population increased by 12.4 percent.

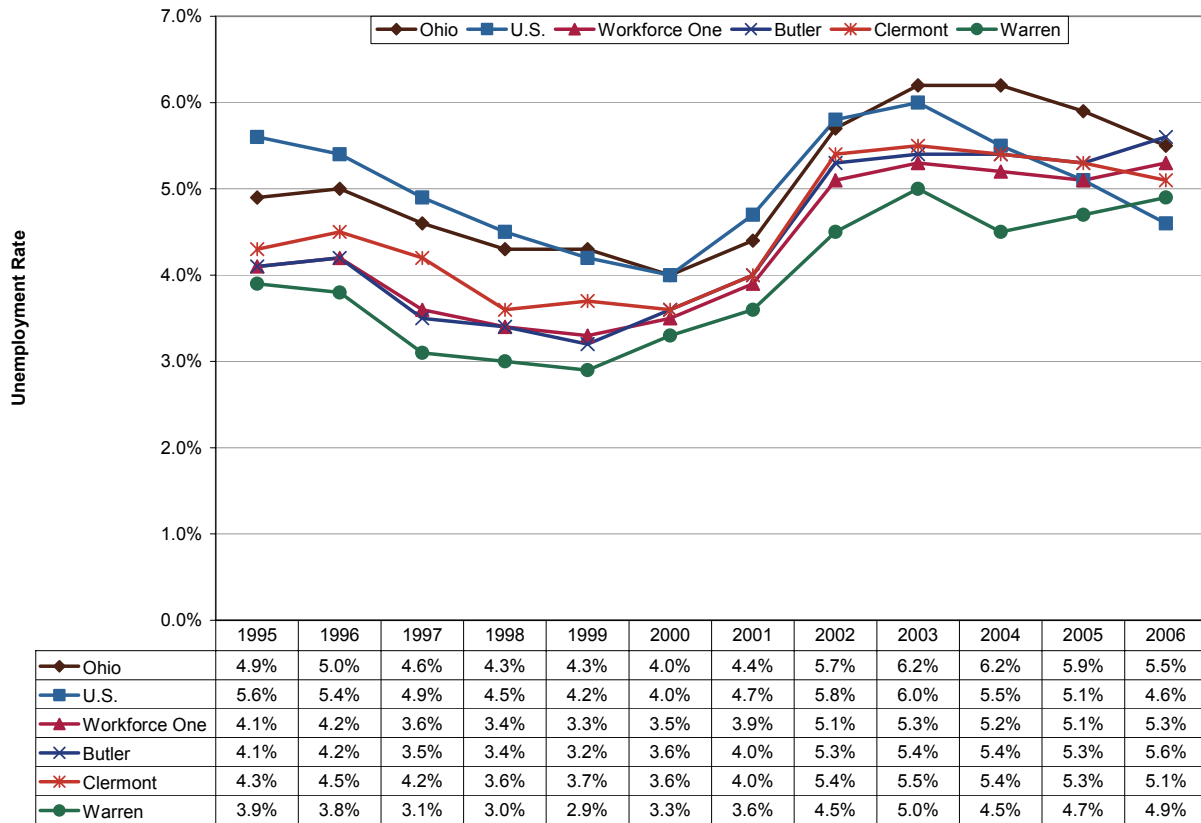
¹ U.S. Census Bureau (2007). *100 Fastest Growing Counties*. Retrieved June 15, 2007, from <http://www.census.gov/popest/counties/CO-EST2006-08.html>.

Employment



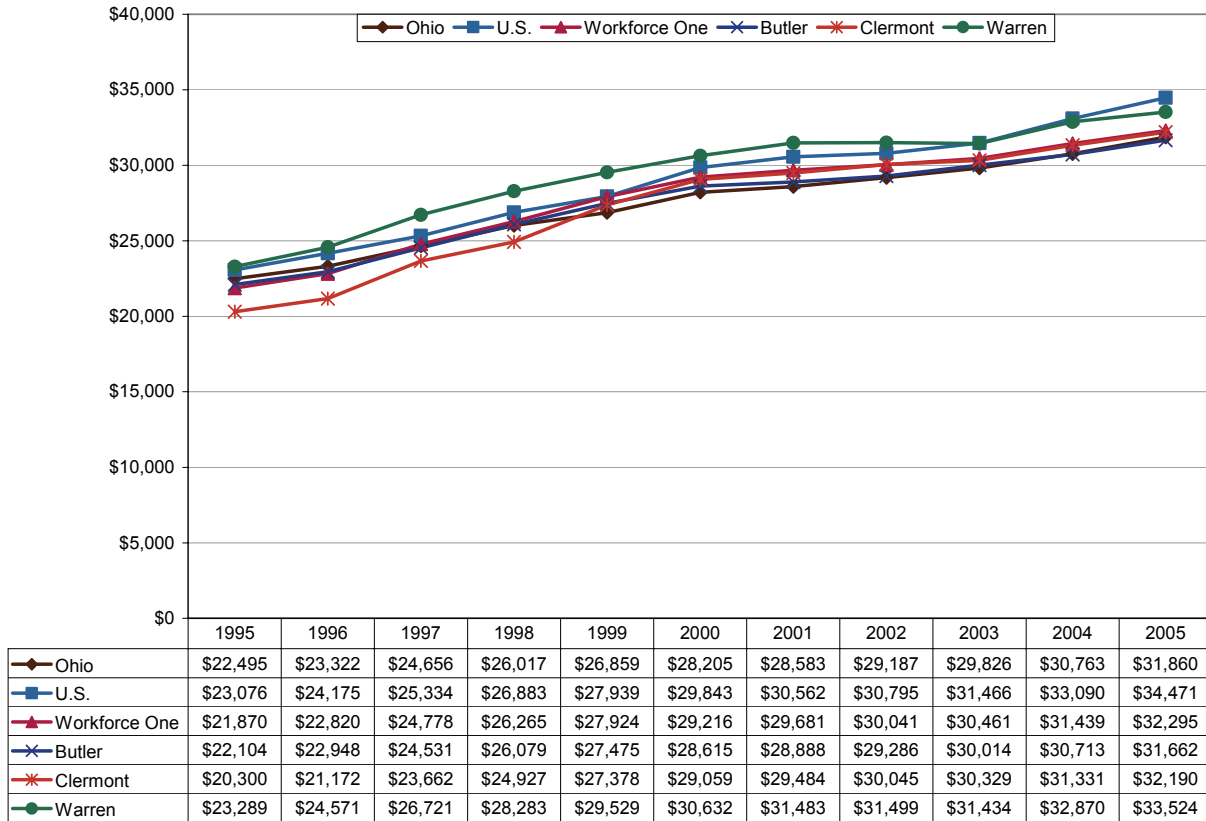
None of the counties in the Workforce One region sustained job losses after the 2001 recession, and employment continues to grow at a strong pace. Since 1995, nonfarm employment rose 43.9 percent in the area. Butler County added the most net jobs during this period: nearly 40,000. Warren County had the fastest relative employment growth: 62.4 percent. By comparison, Ohio nonfarm employment grew 4.0 percent while U.S. employment increased by 16.1 percent from 1995 to 2006.

Unemployment Rates



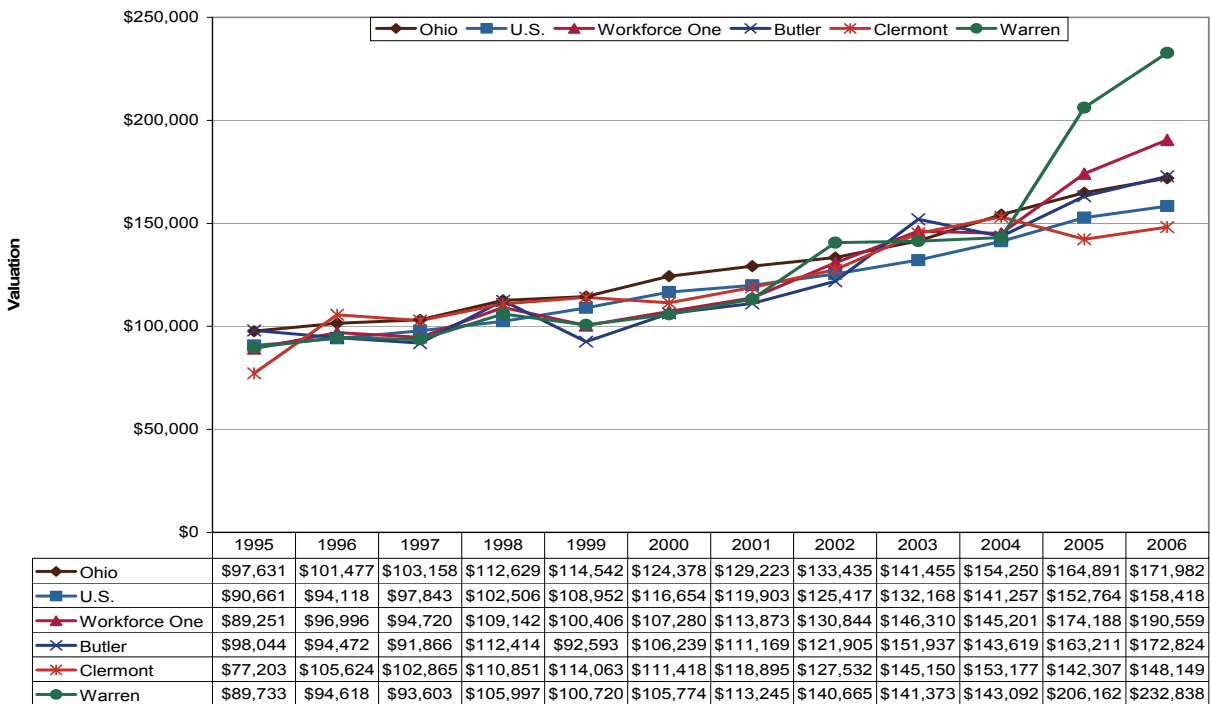
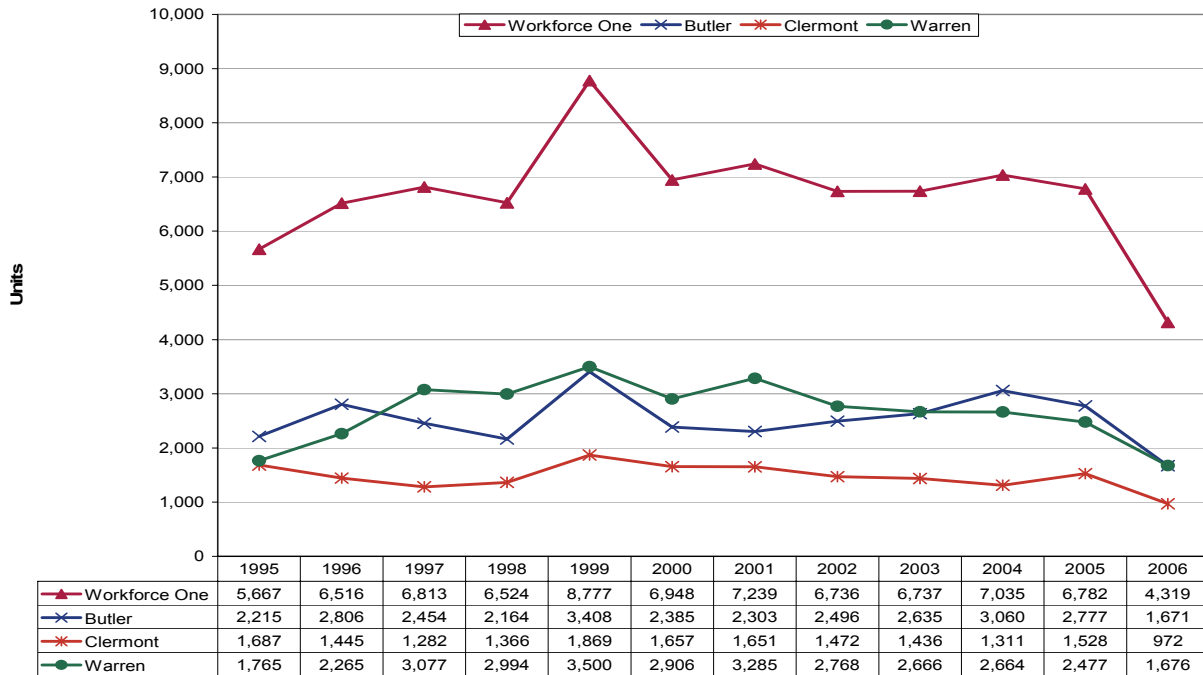
Unemployment in 2006 was 5.3 percent, lower than Ohio's 5.5 percent unemployment rate. Despite solid employment growth the past few years, the unemployment rate has remained above five percent since the last recession. While county unemployment rates have been relatively similar between 1995 and 2006 in this area, Warren County has had the area's lowest unemployment rates. The Ohio and U.S. unemployment rates fell 0.7 and 1.4 percentage points from their peaks in 2003, respectively.

Per Capita Income



Workforce One's per capita income in 2005 was \$32,295 and grew at a 4.0 percent average annual compound rate over the prior ten years. Warren County, one of the fastest-growing counties in the state in terms of population, had the area's highest per capita income levels during this period: \$33,524 in 2005. Per capita income in Clermont County increased the fastest in this area at a 4.7 annual compound rate of growth from 1995 to 2005. State and national growth rates were 3.5 percent and 4.1 percent, respectively.

Residential Building Permits



Construction activity has been relatively stable in the last 11 years, though the number of new residential permits granted dropped significantly last year, as did permits nationwide. Average valuation has been steadily increasing during this time span. The spike in the average valuation in Warren County the last two years was due to having mostly single-family units (more than nine out of ten) which have a higher valuation.

Technical Notes

For a map of Ohio's Workforce Investment system, please visit <http://lmi.state.oh.us/maps/MapofOneStops.htm>.

All population figures are annual estimates by the U.S. Census Bureau, published on the Internet as of May 2007. Analysts at the Ohio Bureau of Labor Market Information (LMI) summed county population to produce totals for local regions. Please visit <http://www.census.gov/popest/estimates.php> for additional information.

Employment figures are from the Quarterly Census of Employment and Wages by the U.S. Bureau of Labor Statistics (BLS) and LMI, published on the Internet in 2007. 2006 figures are based on preliminary quarterly data posted on the Labor Market Info Classic site and subject to revision this fall. Federal government employment, which is not covered by Ohio's unemployment compensation system, had inadvertently been omitted from the totals for 1995-1998 in the original report. That has been corrected in this update. In most counties the difference was negligible. Please visit http://lmi.state.oh.us/cep/CEP_NAICS.htm#Publications for additional statistics.

All unemployment figures are annualized, non-seasonally adjusted estimates by the Local Area Unemployment Statistics (LAUS) Section of LMI, published on the Internet as of May 2007. For additional statistics, please visit <http://lmi.state.oh.us/ASP/LAUS/vbLaus.htm>.

Per capita income figures for counties are in nominal dollars (not adjusted for inflation) and were published April 26, 2007 by the U.S. Bureau of Economic Analysis (BEA). Analysts at LMI calculated income figures for WIAs. For more information, please visit <http://www.bea.gov/regional/index.htm#state>.

Construction data are reported by the U.S. Census Bureau and are available through the Ohio Department of Development, Office of Strategic Research at http://www.odod.state.oh.us/research/Reports_in_population_and_housing-Housing_reports.htm#P6. Analysts at LMI calculated summary data for WIAs. Data are also available at <http://www.census.gov/const/www/permitsindex.html>.