

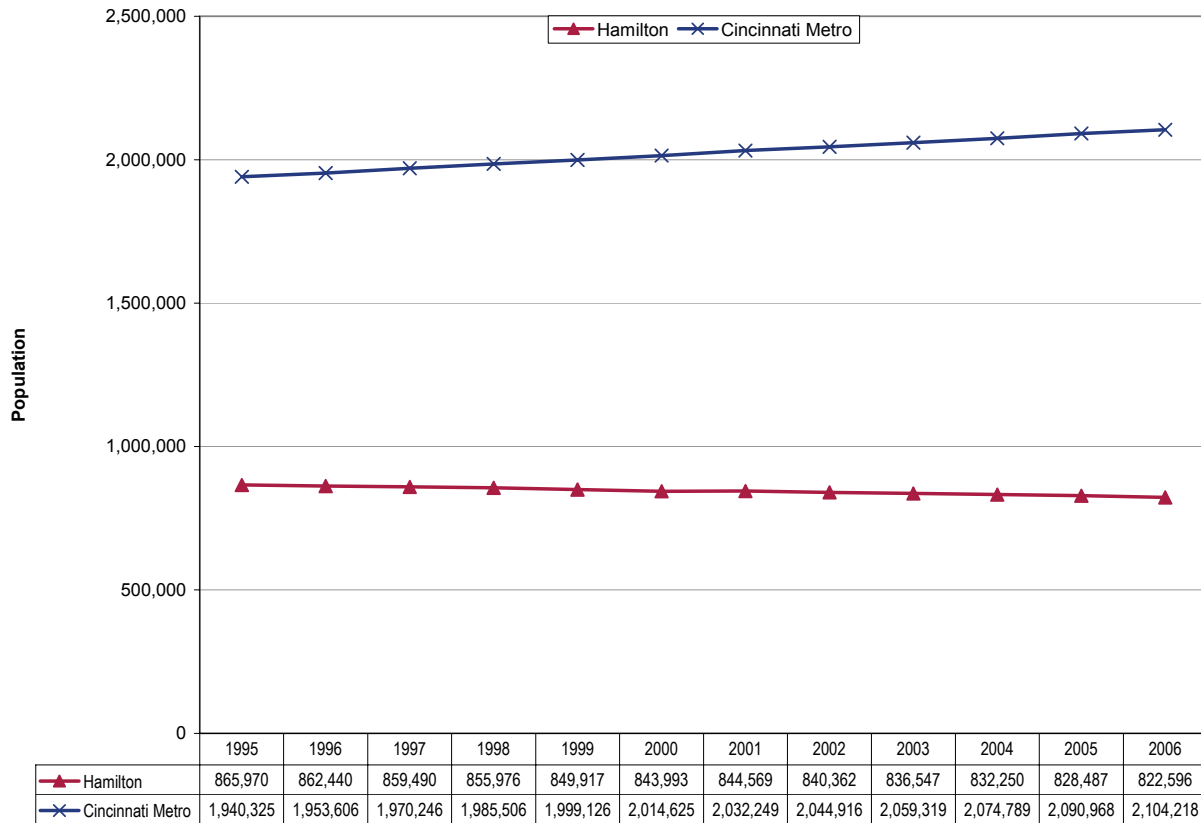
**Updates to Workforce Analysis Reports
Super Jobs Center
July 2007**

This document contains updates to the Workforce Analysis report for the Super Jobs Center, published in April 2007. This is the Workforce Investment Area for Hamilton County. For additional information, please see the Technical Notes at the end of this document.

Table of Contents

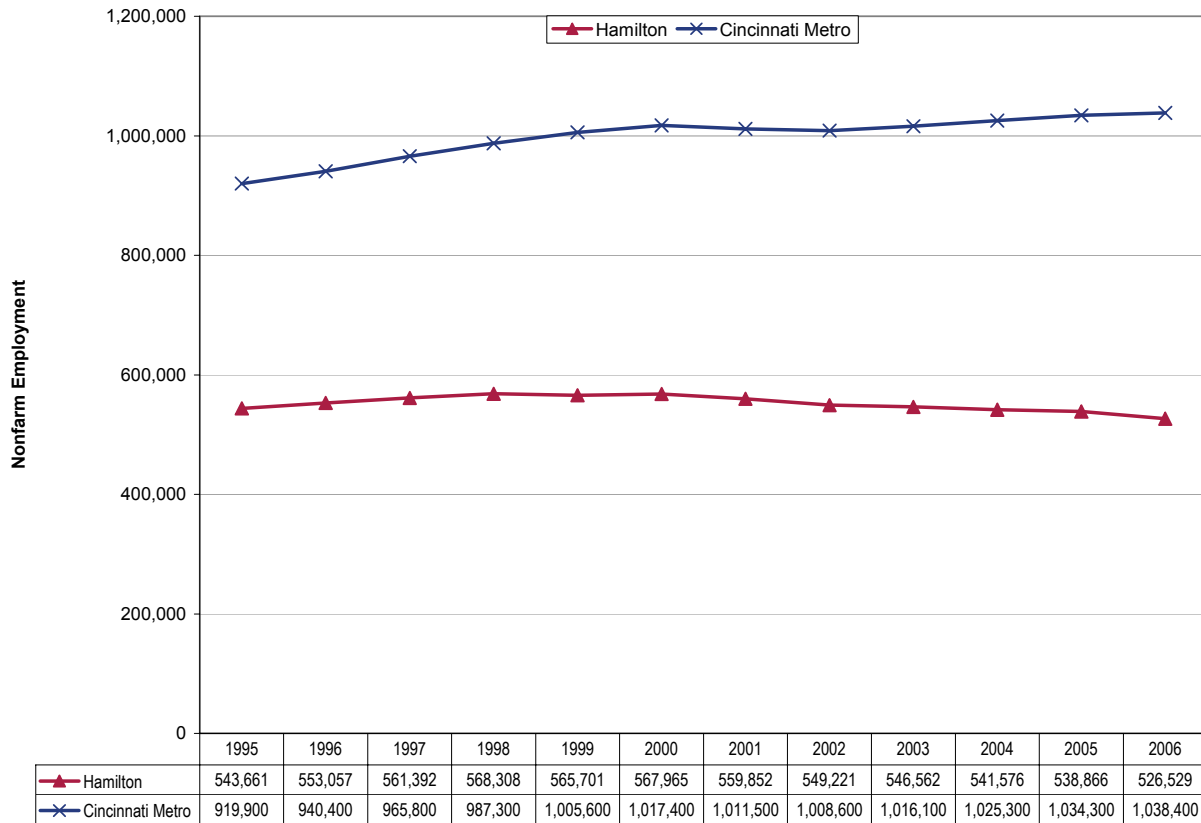
Trends Update	Update to Page
Population	3
Employment	4
Unemployment Rates	5
Per Capita Income.....	6
New Residential Building Permits	7

Population



Population in 2006 was 822,600, a decline of 5.0 percent from 1995 to 2006. For comparison, the Cincinnati metropolitan area grew 8.4 percent during this period to about 2.1 million, suggesting residents are moving out of the city into outlying suburban communities. By comparison, statewide population grew 2.5 percent during this period while national population increased by 12.4 percent.

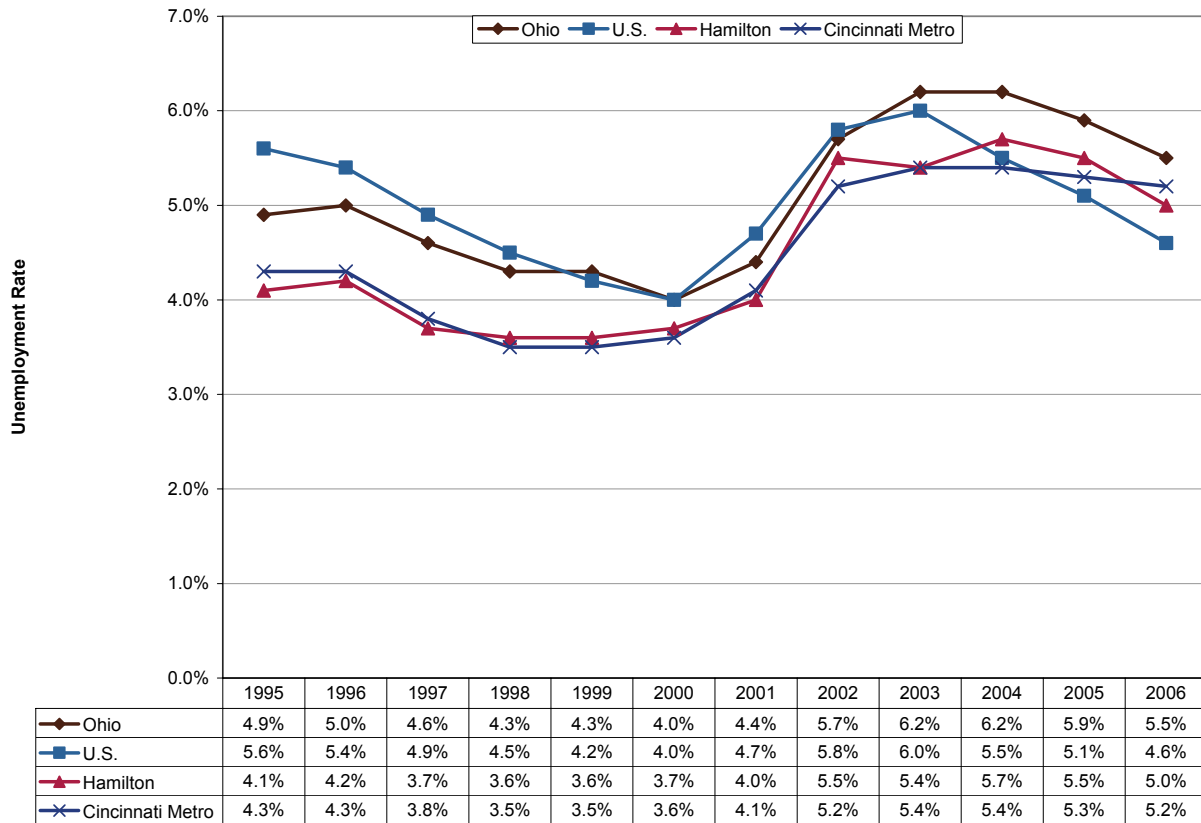
Employment



After gains during the record economic expansion of the late 1990s, Hamilton County employment has fallen 7.3 percent since 2000. Mimicking trends in population, jobs in the Cincinnati metropolitan area expanded after a slight decline from the 2001 recession, increasing 2.1 percent during this period.¹ By comparison, Ohio nonfarm employment fell 3.5 percent from 2000 to 2006 after slight increases since 2003.

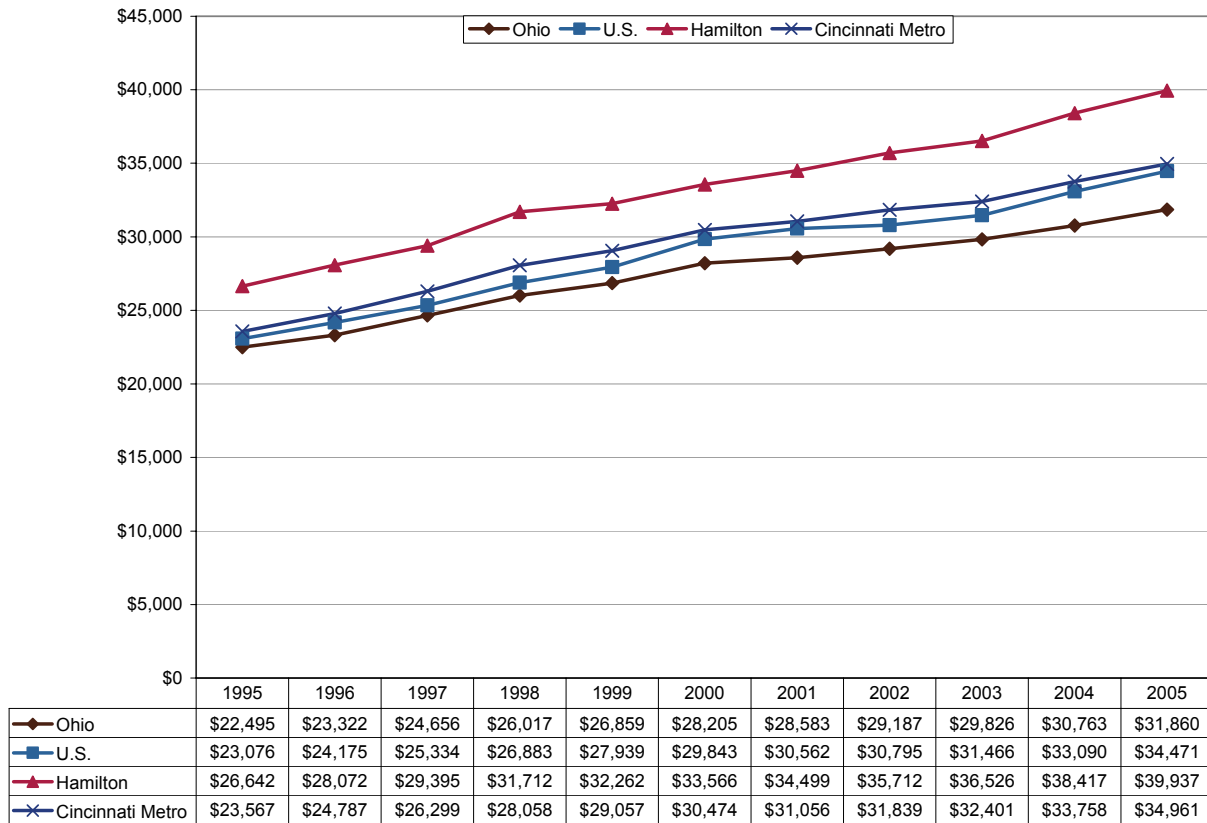
¹ The source of data for the Cincinnati metropolitan is the Current Employment Statistics (CES) program. See Technical Notes for details.

Unemployment Rates



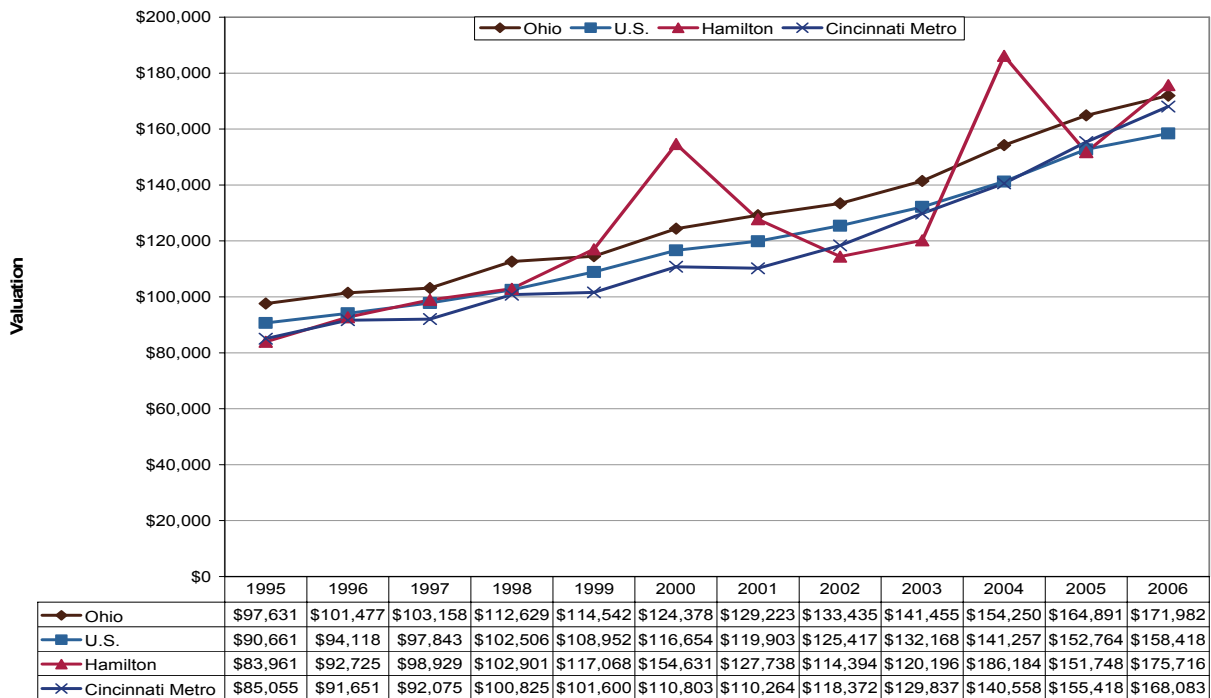
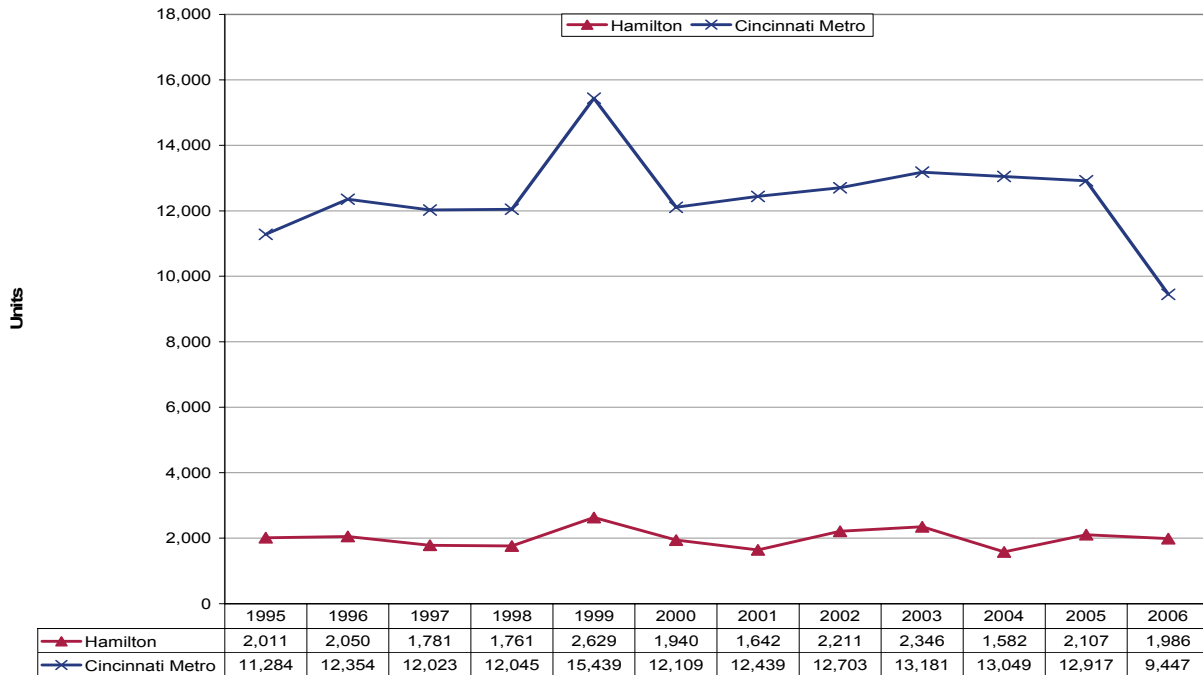
Unemployment in Hamilton County was 5.0 percent in 2006, down 0.7 percentage point from the peak in 2004. Unemployment rates in the Cincinnati metropolitan area were highly similar to the county rates. The Ohio and U.S. unemployment rates fell 0.7 and 1.4 percentage points, respectively, from their peaks in 2003.

Per Capita Income



Per capita income in Hamilton County was \$39,937 in 2005, having grown at a 4.1 percent average annual compound rate from 1995. Per capita income levels were significantly higher than those for the Cincinnati metropolitan area throughout this period, and also grew at a faster rate. State and national growth rates were 3.5 percent and 4.1 percent, respectively.

Residential Building Permits



In 2006, this county accounted for 21.0 percent of metropolitan construction activity with just under 2,000 permits granted. While new residential construction activity has been fairly flat, average valuation has been generally increasing from 1995 to 2006. The number of permits issued in Hamilton County did not drop like they did in the metropolitan area. Nationwide, there was also a significant drop in the number of residential building permits granted from 2005 to 2006.

Technical Notes

For a map of Ohio's Workforce Investment system, please visit <http://lmi.state.oh.us/maps/MapofOneStops.htm>.

All population figures are annual estimates by the U.S. Census Bureau, published on the Internet as of May 2007. This update includes corrections to erroneous metropolitan population estimates between 2000 and 2005. Analysts at the Ohio Bureau of Labor Market Information (LMI) summed county population to produce totals for local regions. Please visit <http://www.census.gov/popest/estimates.php> for additional information.

Employment figures for Hamilton County are from the Quarterly Census of Employment and Wages by the U.S. Bureau of Labor Statistics (BLS) and LMI, published on the Internet in 2007. 2006 figures are based on preliminary quarterly data posted on the Labor Market Info Classic site and subject to revision this fall. Federal government employment, which is not covered by Ohio's unemployment compensation system, had inadvertently been omitted from the totals for 1995-1998 in the original report. That has been corrected in this update. In most counties the difference was negligible. Please visit http://lmi.state.oh.us/cep/CEP_NAICS.htm#Publications for additional statistics.

Employment figures for the Cincinnati-Middletown Metropolitan Statistical Area are from the Current Employment Statistics (CES) program by the BLS and LMI, published on the Internet in 2007. Please visit <http://lmi.state.oh.us/ces/lmr.htm#AnnualAverages> for additional statistics.

All unemployment figures are annualized, non-seasonally adjusted estimates by the Local Area Unemployment Statistics (LAUS) Section of LMI, published on the Internet as of May 2007. For additional statistics, please visit <http://lmi.state.oh.us/ASP/LAUS/vbLaus.htm>.

Per capita income figures for counties are in nominal dollars (not adjusted for inflation) and were published April 26, 2007 by the U.S. Bureau of Economic Analysis (BEA). Analysts at LMI calculated income figures for WIAs. For more information, please visit <http://www.bea.gov/regional/index.htm#state>.

Construction data are reported by the U.S. Census Bureau and are available through the Ohio Department of Development, Office of Strategic Research at http://www.odod.state.oh.us/research/Reports_in_population_and_housing-Housing_reports.htm#P6. Analysts at LMI calculated summary data for WIAs. Data are also available at <http://www.census.gov/const/www/permitsindex.html>.