

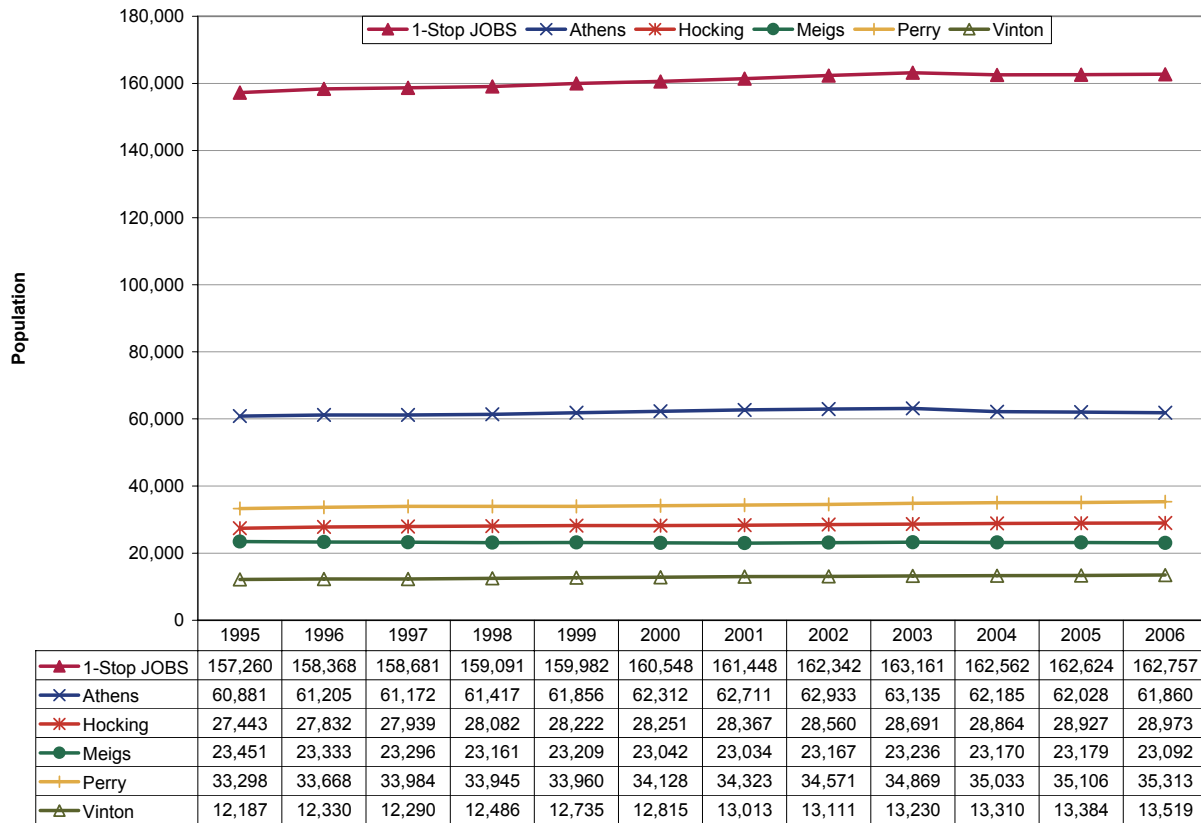
**Updates to Workforce Analysis Reports  
1-Stop JOBS  
July 2007**

This document contains updates to the Workforce Analysis report for the 1-Stop JOBS area, published in April 2007. This area includes Athens, Hocking, Meigs, Perry and Vinton Counties. For additional information, please see the Technical Notes at the end of this document.

**Table of Contents**

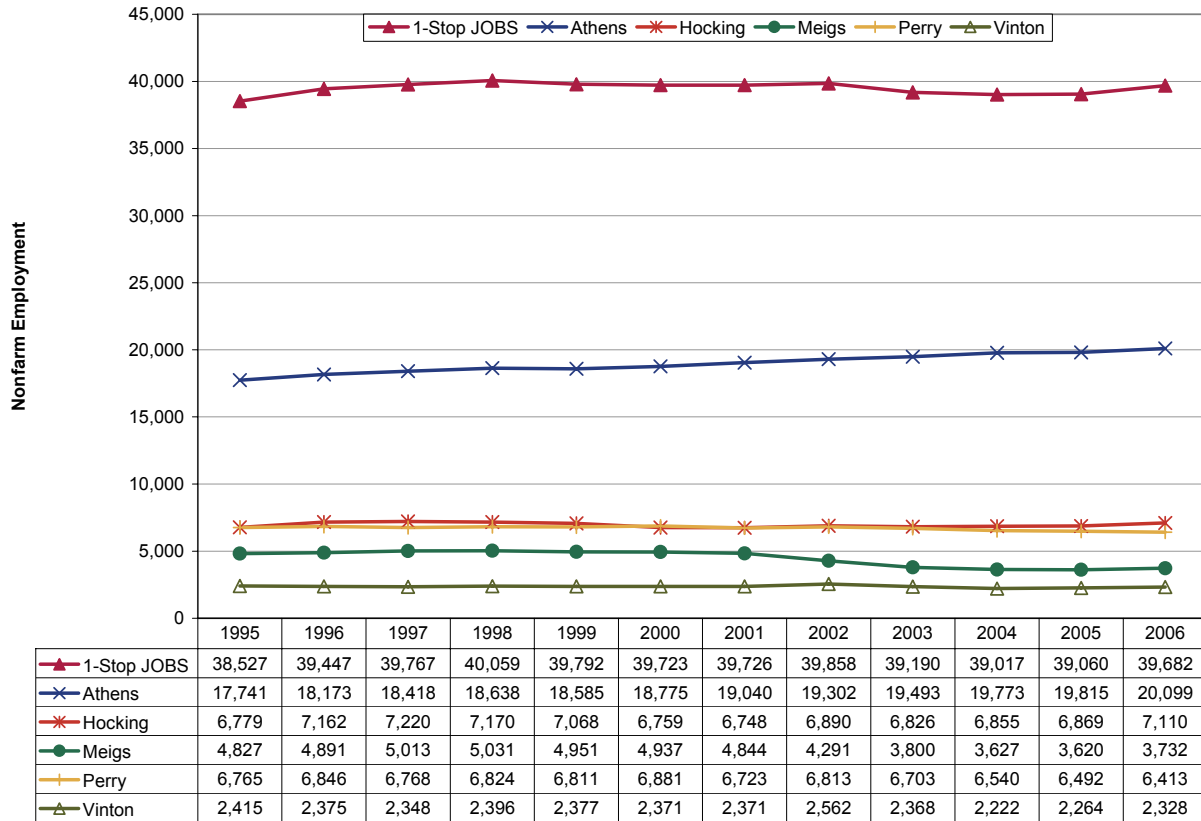
<b>Trends Update</b>	<b>Update to Page</b>
Population .....	3
Employment .....	4
Unemployment Rates .....	5
Per Capita Income.....	6
New Residential Building Permits .....	7

## Population



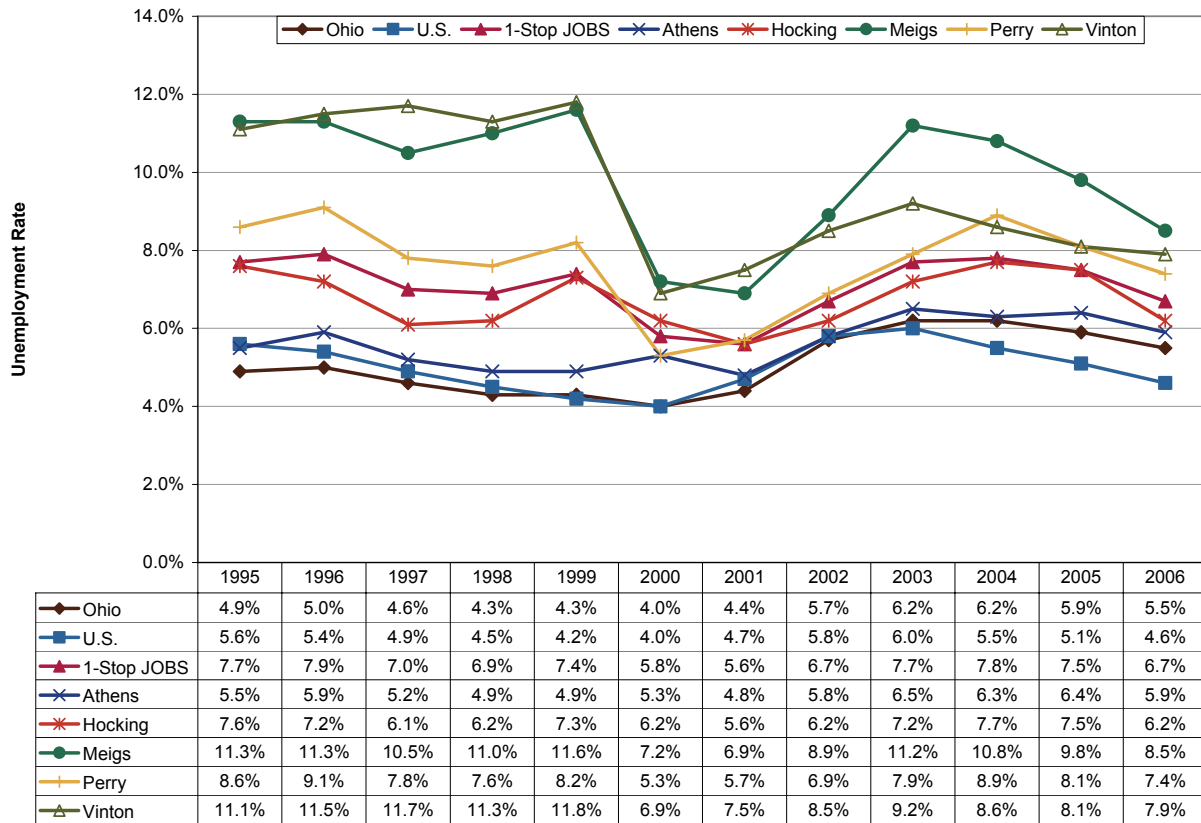
Combined population from 1995 to 2006 grew 3.5 percent to 162,800 residents. Vinton County had the area's fastest growth during this period: about 10.9 percent. Meigs County was the only county with a net population loss. Athens County accounts for most of the population in this area with about 61,900 residents in 2006. By comparison, statewide population grew 2.5 percent during this period while national population increased by 12.4 percent.

## Employment



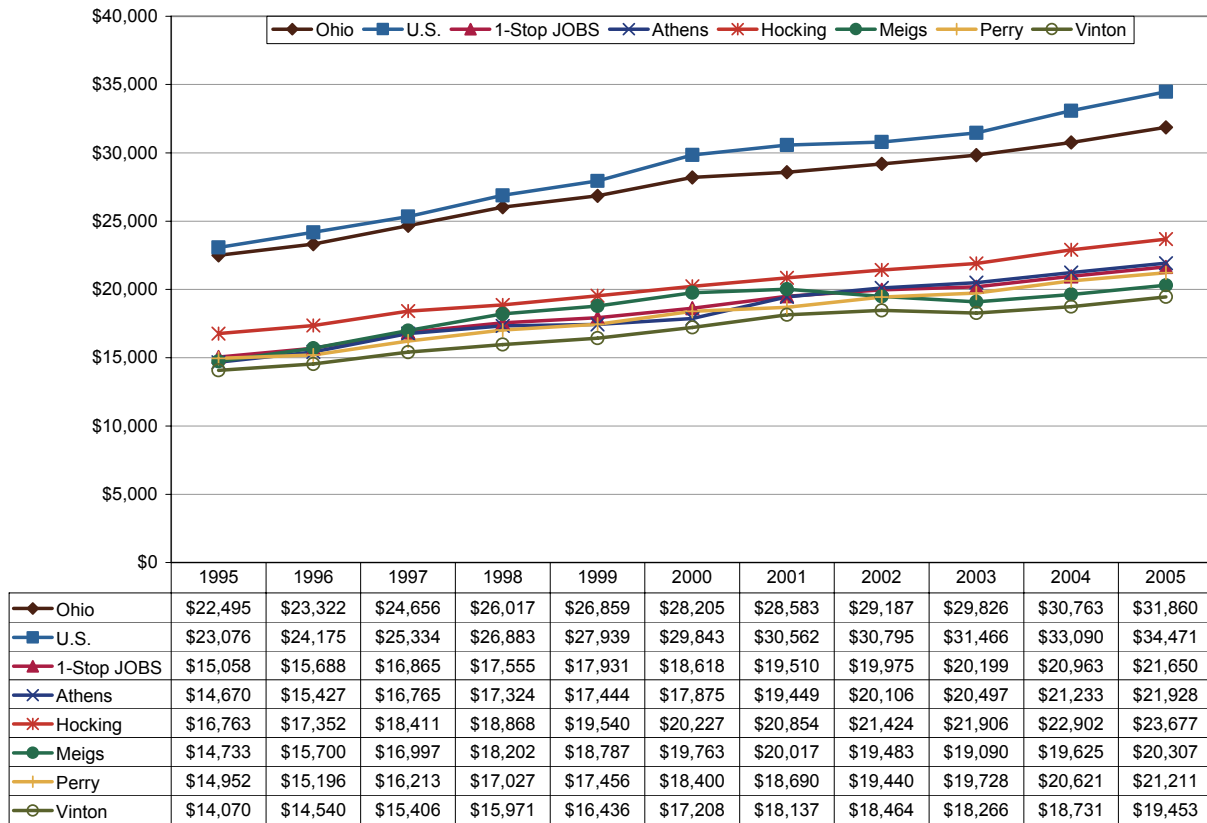
Overall, total nonfarm employment has grown since 1995 and has largely recovered from the 2001 recession. Athens County in particular has seen strong job growth recently, growing 7.1 percent from 2000 to 2006. Meigs County had the largest employment decline during this period, losing about 1,000 jobs. By comparison, Ohio nonfarm employment fell 3.5 percent from 2000 to 2006 after slight increases since 2003.

## Unemployment Rates



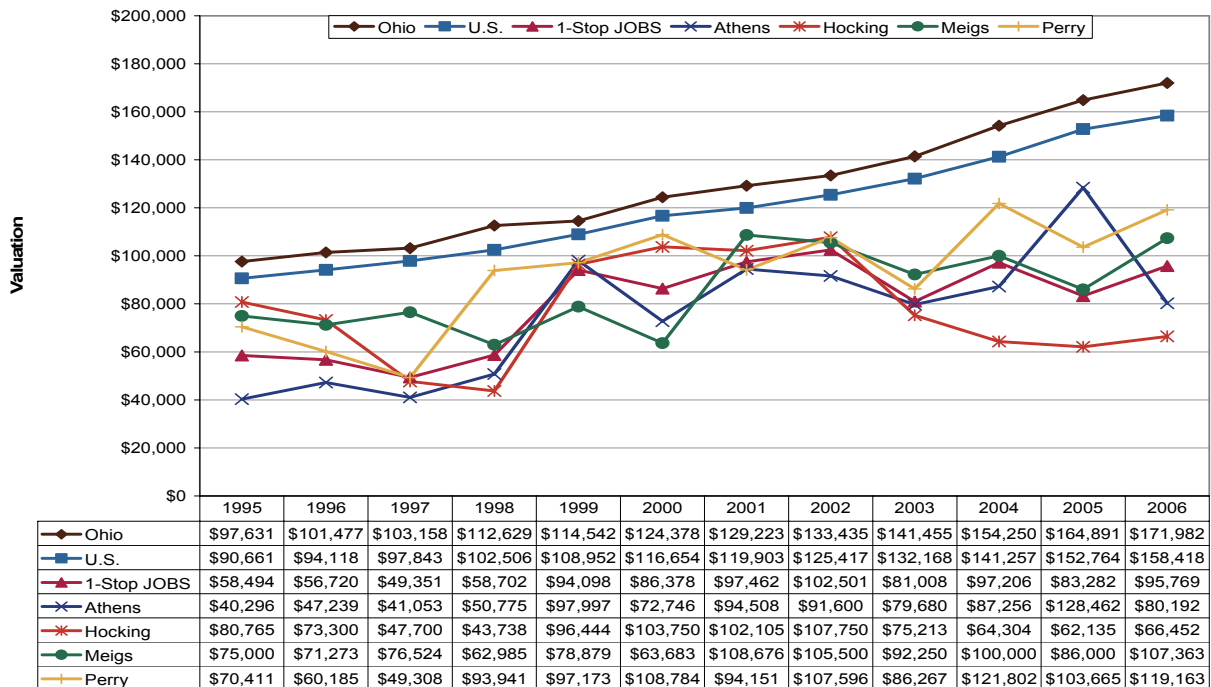
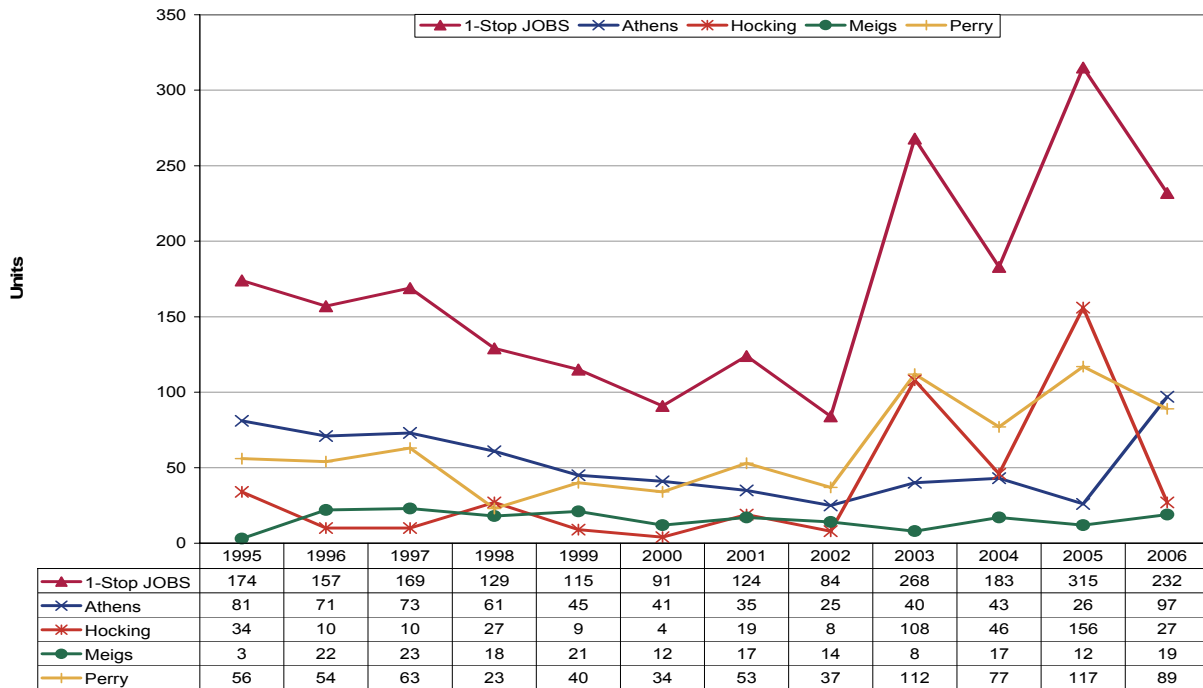
In 2006, area unemployment was 6.7 percent, well above the statewide rate of 5.5 percent but down 1.1 percentage points from the peak in 2004. Unemployment rates have fluctuated more in counties like Vinton and Meigs because of their smaller employment base. Meigs County had the highest unemployment rate of the region in 2006: 8.5 percent. The Ohio and U.S. unemployment rates fell 0.7 and 1.4 percentage points, respectively, from their peaks in 2003.

### Per Capita Income



Per capita income from 1995 to 2005 grew at an average annual compound rate of 3.7 percent to \$21,650. Per capita incomes in this region were consistently lower than state and national rates. Rural areas tend to have lower income levels than urban areas. Hocking County had the area's highest per capita income levels during this period. Athens County had the region's fastest growth in per capita income during this period: 4.1 percent per year. State and national growth rates were 3.5 percent and 4.1 percent, respectively.

### Residential Building Permits



While these data series are somewhat erratic, due to the low number of permits granted, average valuation has generally been increasing. Nationwide, there was a significant drop in the number of residential building permits granted from 2005 to 2006. Vinton County, not shown here, reported only four permits for this whole period in 2005 with an average valuation of \$10,000.

## Technical Notes

For a map of Ohio's Workforce Investment system, please visit <http://lmi.state.oh.us/maps/MapofOneStops.htm>.

All population figures are annual estimates by the U.S. Census Bureau, published on the Internet as of May 2007. Analysts at the Ohio Bureau of Labor Market Information (LMI) summed county population to produce totals for local regions. Please visit <http://www.census.gov/popest/estimates.php> for additional information.

Employment figures are from the Quarterly Census of Employment and Wages by the U.S. Bureau of Labor Statistics (BLS) and LMI, published on the Internet in 2007. 2006 figures are based on preliminary quarterly data posted on the Labor Market Info Classic site and subject to revision this fall. Federal government employment, which is not covered by Ohio's unemployment compensation system, had inadvertently been omitted from the totals for 1995-1998 in the original report. That has been corrected in this update. In most counties the difference was negligible. Please visit [http://lmi.state.oh.us/cep/CEP\\_NAICS.htm#Publications](http://lmi.state.oh.us/cep/CEP_NAICS.htm#Publications) for additional statistics.

All unemployment figures are annualized, non-seasonally adjusted estimates by the Local Area Unemployment Statistics (LAUS) Section of LMI, published on the Internet as of May 2007. For additional statistics, please visit <http://lmi.state.oh.us/ASP/LAUS/vbLaus.htm>.

Per capita income figures for counties are in nominal dollars (not adjusted for inflation) and were published April 26, 2007 by the U.S. Bureau of Economic Analysis (BEA). Analysts at LMI calculated income figures for WIAs. For more information, please visit <http://www.bea.gov/regional/index.htm#state>.

Construction data are reported by the U.S. Census Bureau and are available through the Ohio Department of Development, Office of Strategic Research at [http://www.odod.state.oh.us/research/Reports\\_in\\_population\\_and\\_housing-Housing\\_reports.htm#P6](http://www.odod.state.oh.us/research/Reports_in_population_and_housing-Housing_reports.htm#P6). Analysts at LMI calculated summary data for WIAs. Data are also available at <http://www.census.gov/const/www/permitsindex.html>.