

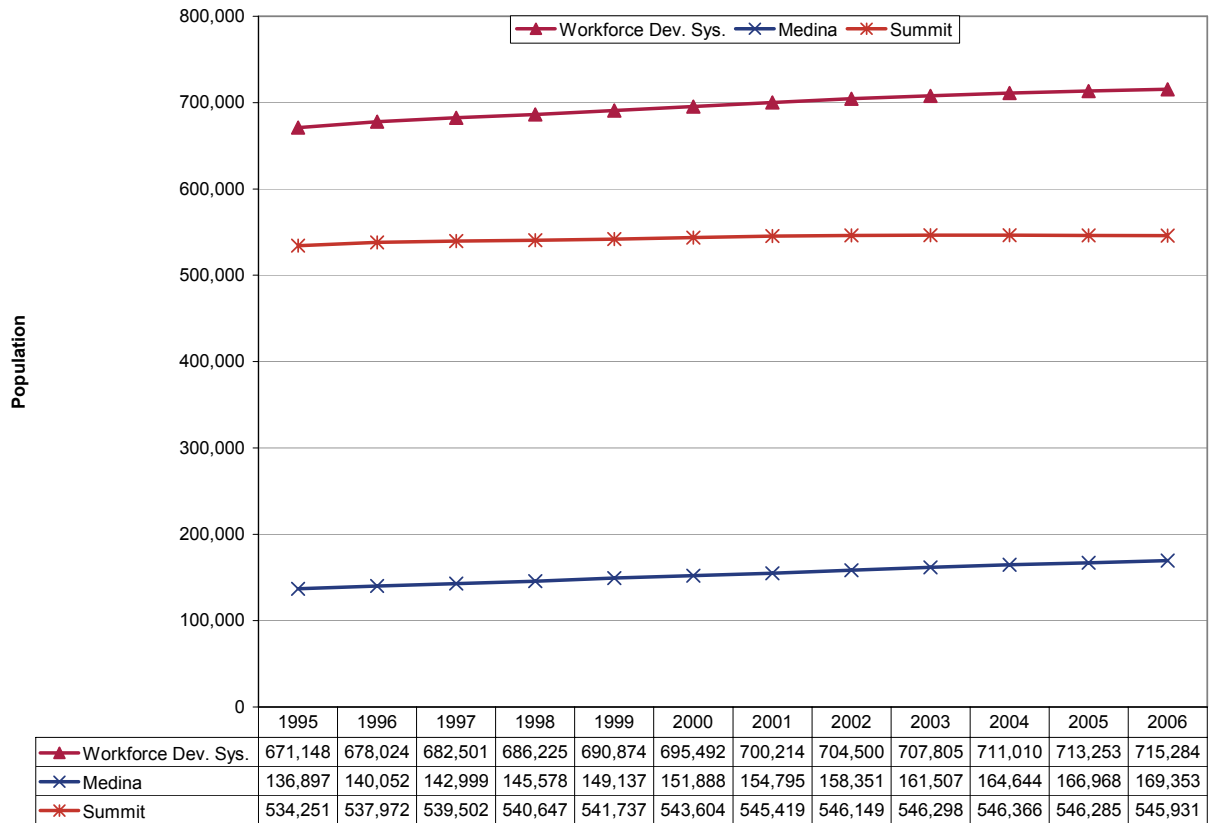
**Updates to Workforce Analysis Reports
Summit and Medina Workforce Development System
July 2007**

This document contains updates to the Workforce Analysis report for the Summit and Medina Workforce Development System, published in March 2007. As the name suggests, this area includes Medina and Summit Counties. For additional information, please see the Technical Notes at the end of this document.

Table of Contents

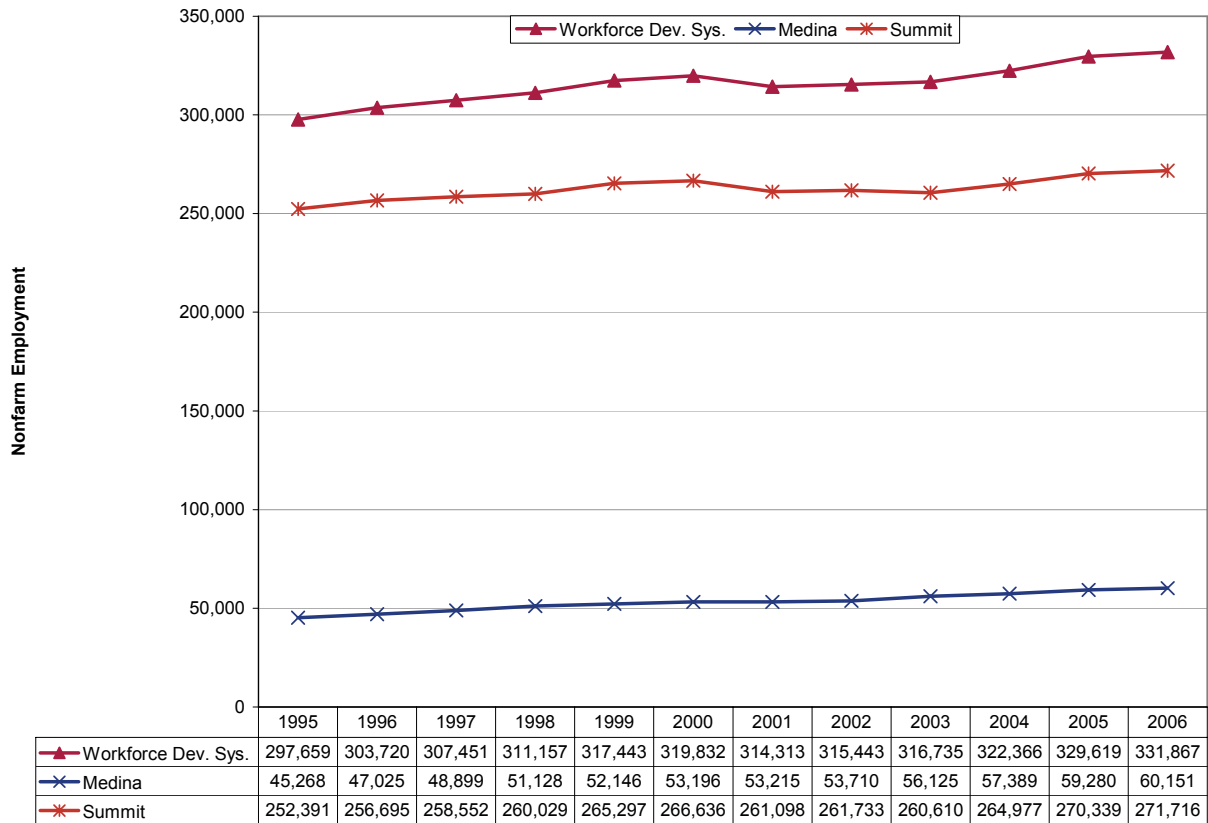
Trends Update	Update to Page
Population	3
Employment	4
Unemployment Rates	5
Per Capita Income.....	6
New Residential Building Permits	7

Population



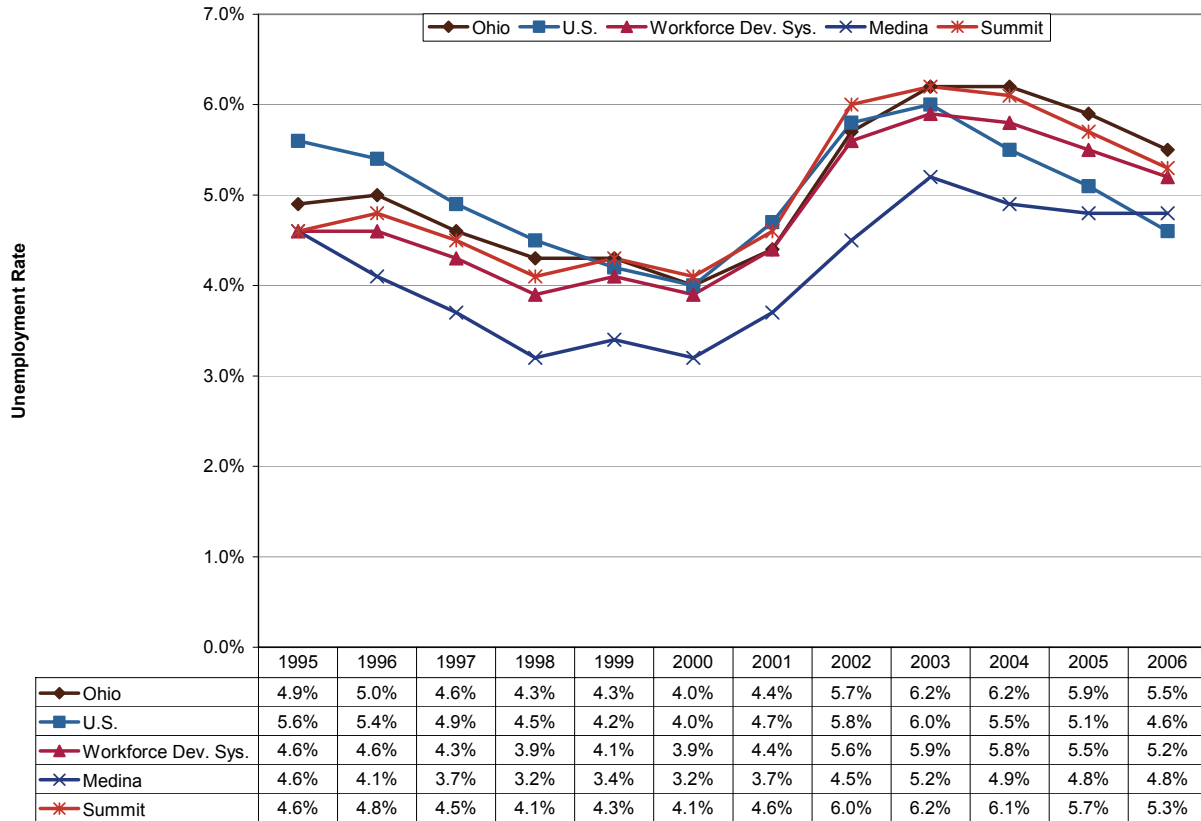
Total area population increased 6.6 percent from 1995 to 2006, reaching 715,300. Medina County, part of the Cleveland metropolitan area, grew 23.7 percent to 169,400 during this period. Summit County, which contains the central city of the Akron metropolitan area, had more modest growth: 2.2 percent to 545,900. By comparison, statewide population grew 2.5 percent during this period while national population increased by 12.4 percent.

Employment



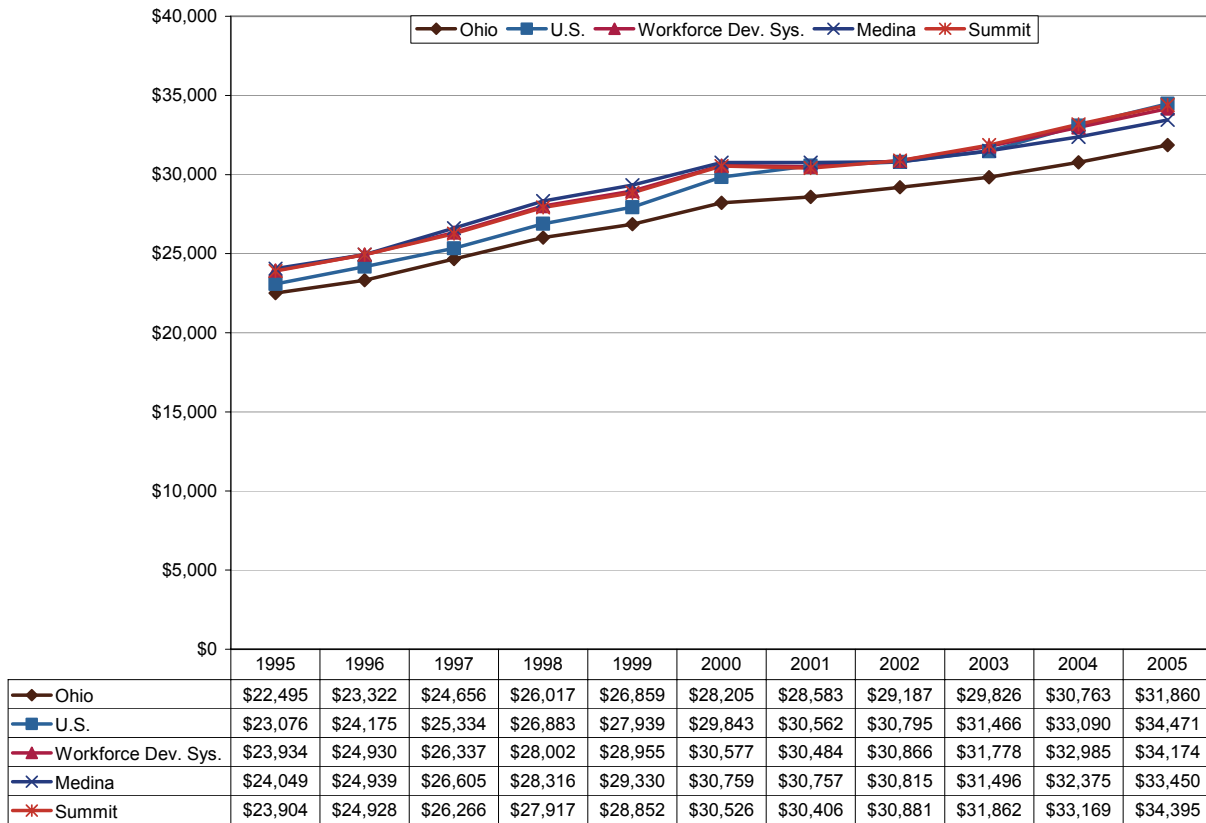
The Workforce Development System has fully recovered from job losses following the 2001 recession and continues to grow. Between 1995 and 2006, total nonfarm employment grew 11.5 percent. Medina County in particular added nearly 15,000 jobs (32.9%) during this period. Total growth in Summit County was more modest since it was more heavily impacted by the last economic cycle. For comparison, Ohio nonfarm employment grew 4.0 percent while U.S. employment increased 16.1 percent from 1995 to 2006.

Unemployment Rates



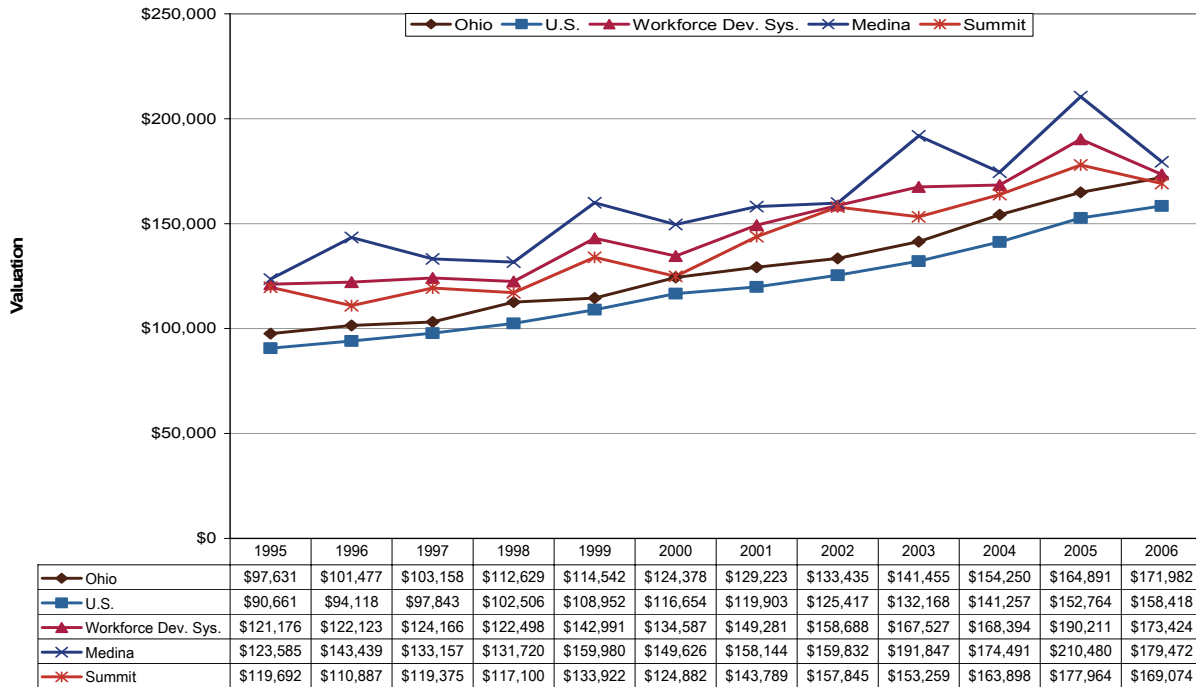
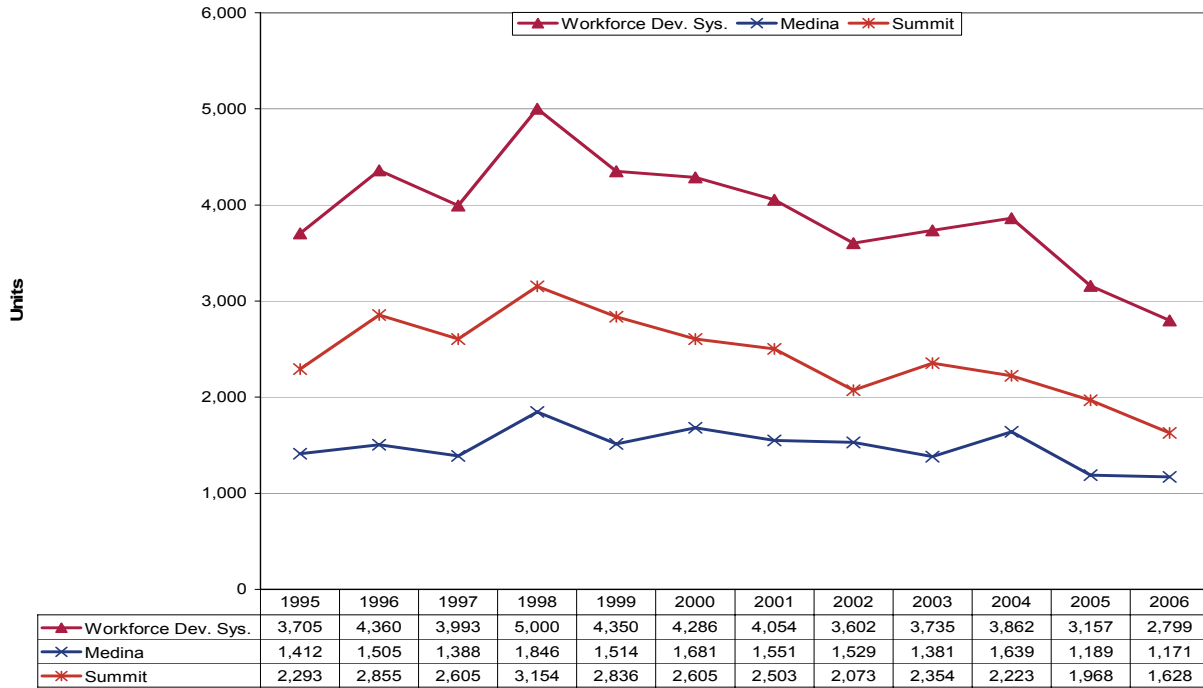
The WIA's unemployment rate in 2006 was 5.2 percent, lower than the statewide rate of 5.5 percent. This rate has fallen 0.7 percentage points from its last peak in 2003. From 1995 to 2006 Medina County has had the area's lowest unemployment rate (4.8% in 2006), while Summit County was more in line with the rest of the state (5.3% in 2006). The Ohio and U.S. unemployment rates fell 0.7 and 1.4 percentage points from 2003 to 2006, respectively.

Per Capita Income



Per capita income in 2005 was \$34,174, an average annual increase of 3.6 percent from 1995. Both counties in this region had highly similar income levels over the period of analysis, though the two counties grew at different rates. Per capita income in Medina County grew 3.4 percent per year, while Summit County income increased 3.7 percent per year. State and national growth rates were 3.5 percent and 4.1 percent, respectively.

Residential Building Permits



Construction activity has been on the decline in recent years, from 5,000 total units in 1998 to about 2,800 units in 2006. While Summit County generally had a greater number of permits granted between 1995 and 2006, Medina County had more highly-valued units. Nationwide, there was a significant drop in the number of residential building permits granted from 2005 to 2006. Ohio permits began to fall in 2004.

Technical Notes

For a map of Ohio's Workforce Investment system, please visit <http://lmi.state.oh.us/maps/MapofOneStops.htm>.

All population figures are annual estimates by the U.S. Census Bureau, published on the Internet as of May 2007. Analysts at the Ohio Bureau of Labor Market Information (LMI) summed county population to produce totals for local regions. Please visit <http://www.census.gov/popest/estimates.php> for additional information.

Employment figures are from the Quarterly Census of Employment and Wages by the U.S. Bureau of Labor Statistics (BLS) and LMI, published on the Internet in 2007. 2006 figures are based on preliminary quarterly data posted on the Labor Market Info Classic site and subject to revision this fall. Federal government employment, which is not covered by Ohio's unemployment compensation system, had inadvertently been omitted from the totals for 1995-1998 in the original report. That has been corrected in this update. In most counties the difference was negligible. Please visit http://lmi.state.oh.us/cep/CEP_NAICS.htm#Publications for additional statistics.

All unemployment figures are annualized, non-seasonally adjusted estimates by the Local Area Unemployment Statistics (LAUS) Section of LMI, published on the Internet as of May 2007. For additional statistics, please visit <http://lmi.state.oh.us/ASP/LAUS/vbLaus.htm>.

Per capita income figures for counties are in nominal dollars (not adjusted for inflation) and were published April 26, 2007 by the U.S. Bureau of Economic Analysis (BEA). Analysts at LMI calculated income figures for WIAs. For more information, please visit <http://www.bea.gov/regional/index.htm#state>.

Construction data are reported by the U.S. Census Bureau and are available through the Ohio Department of Development, Office of Strategic Research at http://www.odod.state.oh.us/research/Reports_in_population_and_housing-Housing_reports.htm#P6. Analysts at LMI calculated summary data for WIAs. Data are also available at <http://www.census.gov/const/www/permitsindex.html>.