

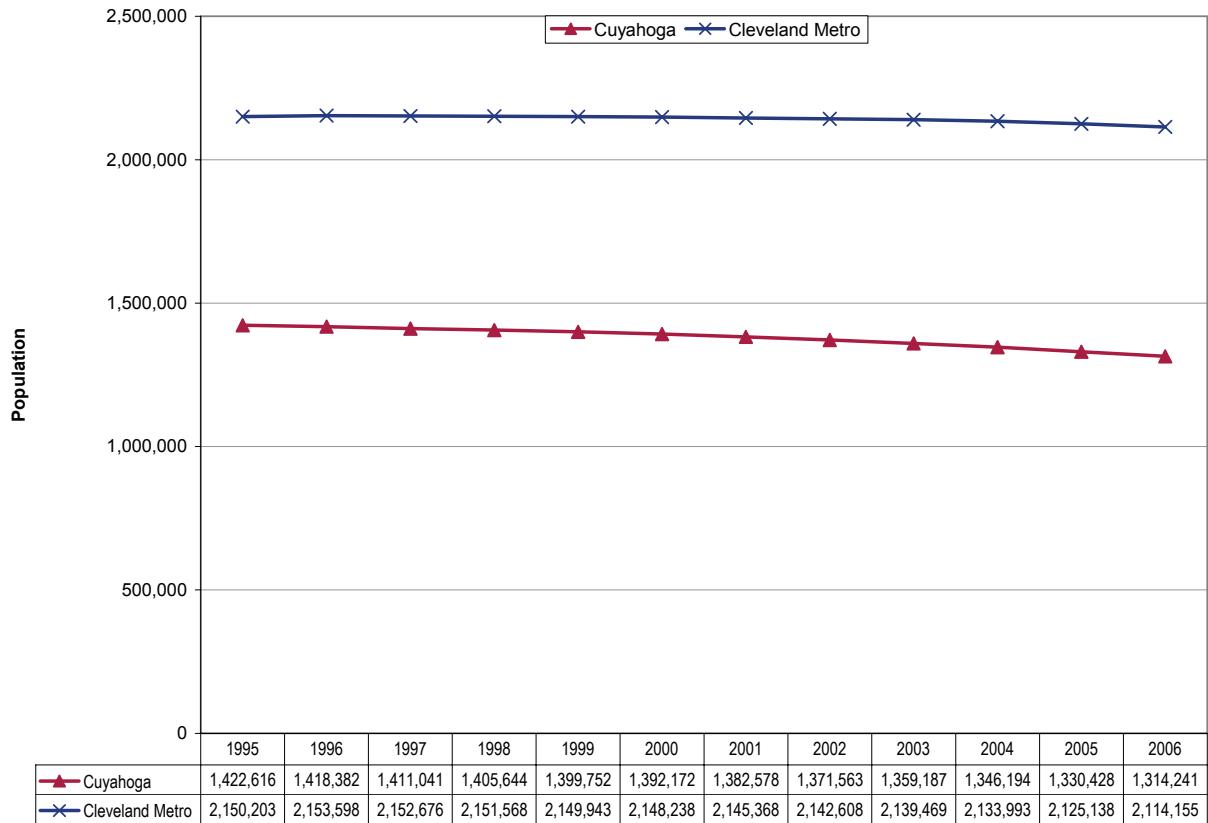
**Updates to Workforce Analysis Reports  
Employment Connection  
July 2007**

This document contains updates to the Workforce Analysis report for the Employment Connection, published in March 2007. This is the Workforce Investment Area for Cuyahoga County. For additional information, please see the Technical Notes at the end of this document.

**Table of Contents**

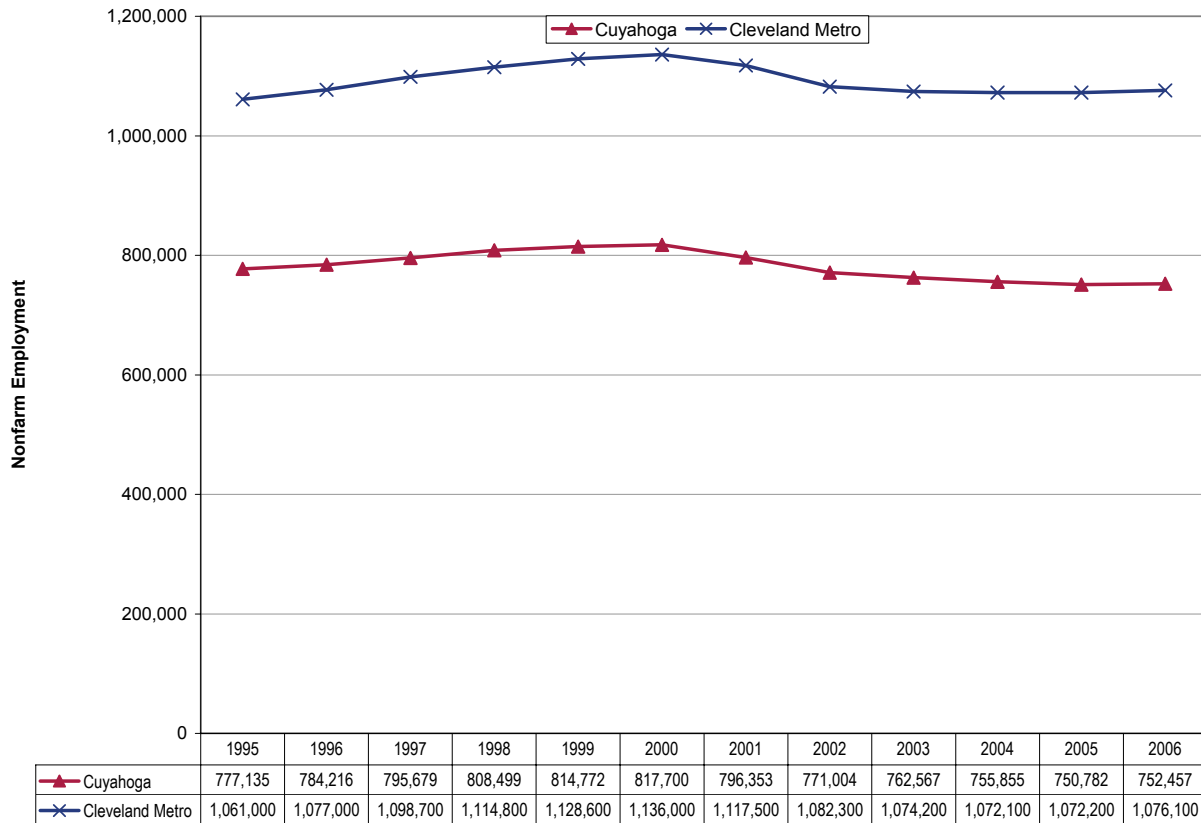
<b>Trends Update</b>	<b>Update to Page</b>
Population .....	3
Employment .....	4
Unemployment Rates .....	5
Per Capita Income.....	6
New Residential Building Permits .....	7

## Population



Population in Cuyahoga County fell 7.6 percent from 1995 to 2006 to about 1.3 million. For comparison, population in the broader metropolitan area fell only 1.7 percent to 2.1 million during this period, suggesting residents are moving away from the central city into suburban communities outside the county. For comparison, statewide population grew 2.5 percent during this period while national population increased by 12.4 percent.

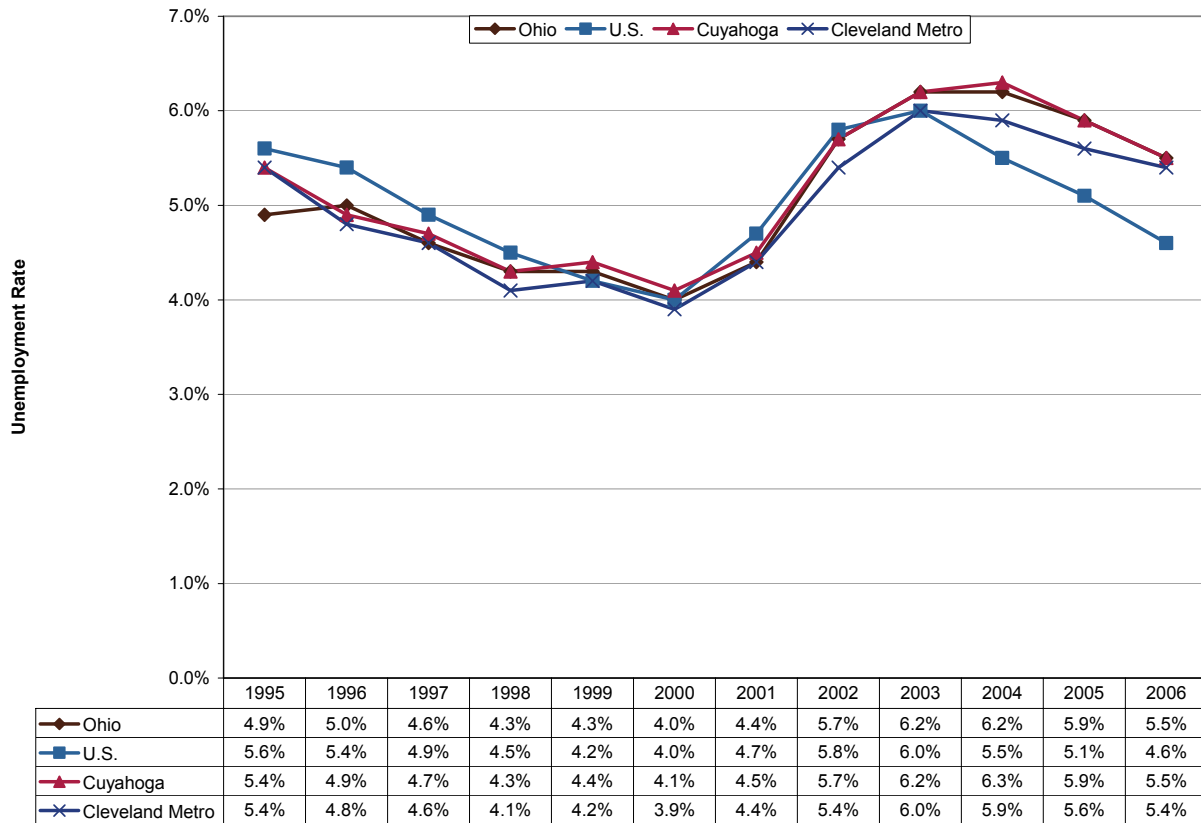
## Employment



While Cuyahoga County experienced job growth during the record economic expansion of the late 1990s, employment has fallen 8.0 percent from 2000 to 2006, although there were about 1,700 jobs added from 2005 to 2006. Employment in the larger metropolitan area declined 5.3 percent since the recession, also adding jobs in 2006.<sup>1</sup> By comparison, Ohio nonfarm employment fell 3.5 percent during this period after slight increases from 2003.

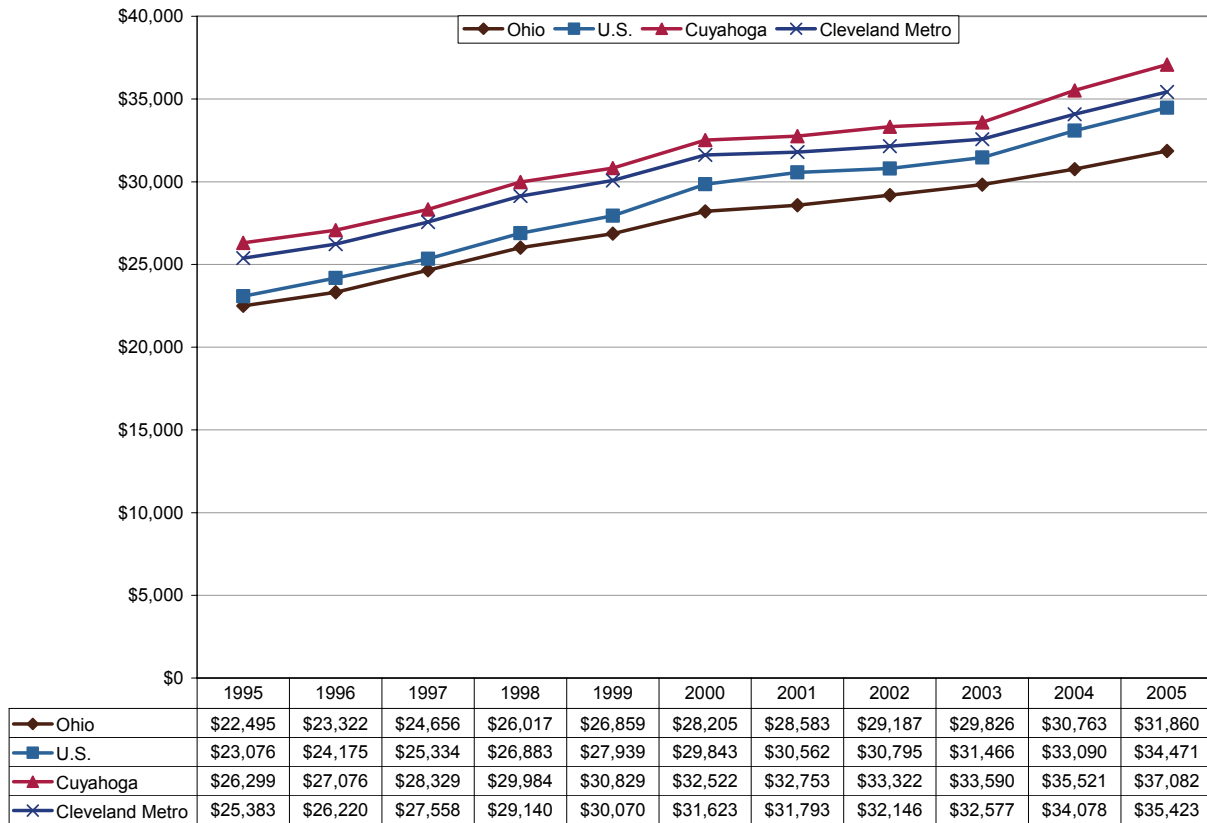
<sup>1</sup> The source of data for the Cleveland metropolitan area is the Current Employment Statistics (CES) program. See Technical Notes for details.

## Unemployment Rates



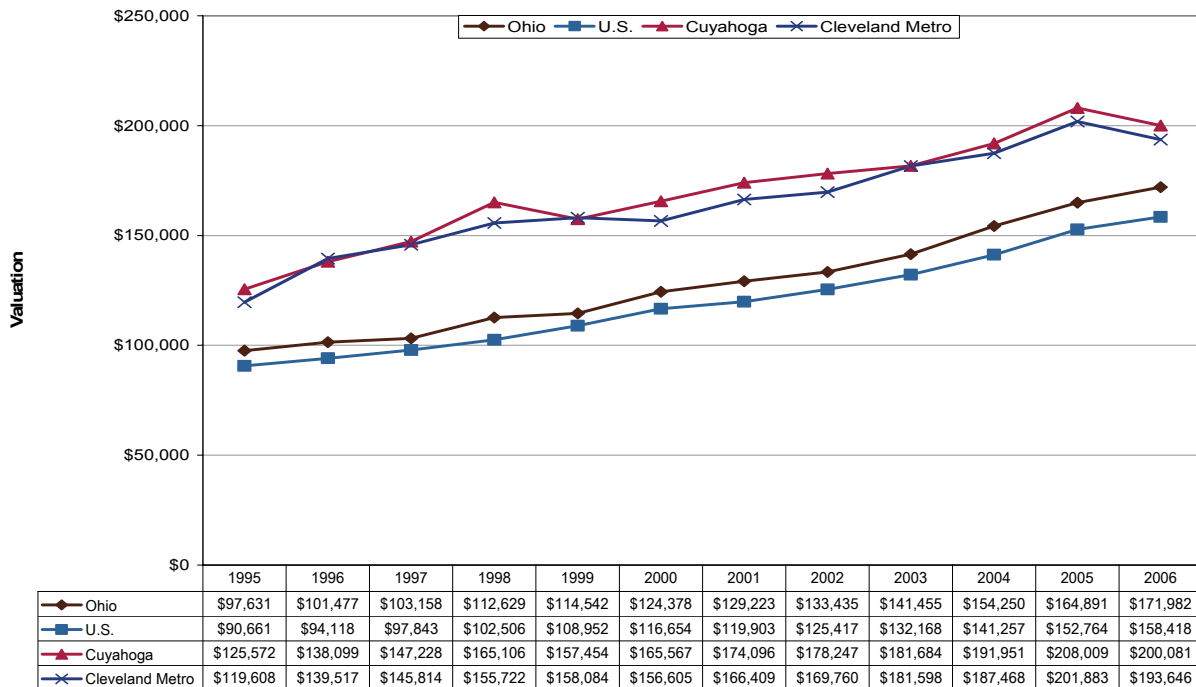
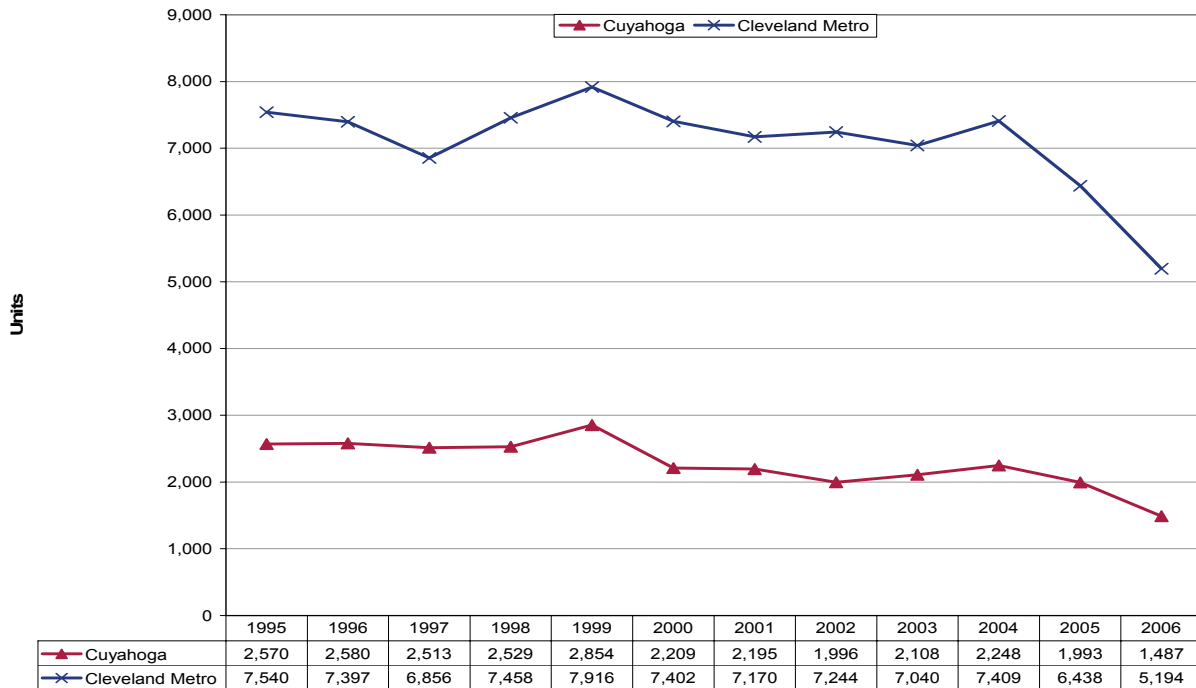
In 2006, the county had the same unemployment rate as the state: 5.5 percent, a decline of 0.8 percentage points from the last peak in 2004. For comparison, the unemployment rate in the Cleveland metropolitan area was 5.4 percent. The county's unemployment rate has generally been just barely higher than the metropolitan rate from 1995 to 2006. The Ohio and U.S. unemployment rates fell 0.7 and 1.4 percentage points from their peaks in 2003, respectively.

## Per Capita Income



Per capita income in 2005 was \$37,082, having grown at a 3.5 percent annual compound rate from 1995. For comparison, per capita income in the larger metropolitan area was \$35,423 in 2005 and increased at a slightly slower rate: 3.4 percent per year. These income levels were both significantly higher than the statewide income level. Per capita incomes in urban areas such as Cleveland tend to be higher than those in rural areas. State and national growth rates were 3.5 percent and 4.1 percent, respectively.

## Residential Building Permits



In 2006, the county granted 1,487 residential permits—about 29 percent of the total for the Cleveland area that year. Housing valuations have been about the same as for the metropolitan area. The number of permits in Ohio began to decline in 2004; for the U.S., there was a significant drop in the number of residential building permits granted from 2005 to 2006.

## Technical Notes

For a map of Ohio's Workforce Investment system, please visit <http://lmi.state.oh.us/maps/MapofOneStops.htm>.

All population figures are annual estimates by the U.S. Census Bureau, published on the Internet as of May 2007. Analysts at the Ohio Bureau of Labor Market Information (LMI) summed county population to produce totals for local regions. Please visit <http://www.census.gov/popest/estimates.php> for additional information.

Employment figures for Cuyahoga County are from the Quarterly Census of Employment and Wages (QCEW) by the U.S. Bureau of Labor Statistics (BLS) and LMI, published on the Internet in 2007. 2006 figures are based on preliminary quarterly data posted on the Labor Market Info Classic site and subject to revision this fall. Federal government employment, which is not covered by Ohio's unemployment compensation system, had inadvertently been omitted from the totals for 1995-1998 in the original report. That has been corrected in this update. In most counties the difference was negligible. Please visit [http://lmi.state.oh.us/cep/CEP\\_NAICS.htm#Publications](http://lmi.state.oh.us/cep/CEP_NAICS.htm#Publications) for additional statistics.

Employment figures for the Cleveland-Elyria-Mentor Metropolitan Statistical Area are from the Current Employment Statistics (CES) program by the BLS and LMI, published on the Internet in 2007. Please visit <http://lmi.state.oh.us/ces/lmr.htm#AnnualAverages> for additional statistics.

All unemployment figures are annualized, non-seasonally adjusted estimates by the Local Area Unemployment Statistics (LAUS) Section of LMI, published on the Internet as of May 2007. For additional statistics, please visit <http://lmi.state.oh.us/ASP/LAUS/vbLaus.htm>.

Per capita income figures for counties are in nominal dollars (not adjusted for inflation) and were published April 26, 2007 by the U.S. Bureau of Economic Analysis (BEA). Analysts at LMI calculated income figures for WIAs. For more information, please visit <http://www.bea.gov/regional/index.htm#state>.

Construction data are reported by the U.S. Census Bureau and are available through the Ohio Department of Development, Office of Strategic Research at [http://www.odod.state.oh.us/research/Reports\\_in\\_population\\_and\\_housing-Housing\\_reports.htm#P6](http://www.odod.state.oh.us/research/Reports_in_population_and_housing-Housing_reports.htm#P6). Analysts at LMI calculated summary data for WIAs. Data are also available at <http://www.census.gov/const/www/permitsindex.html>.