

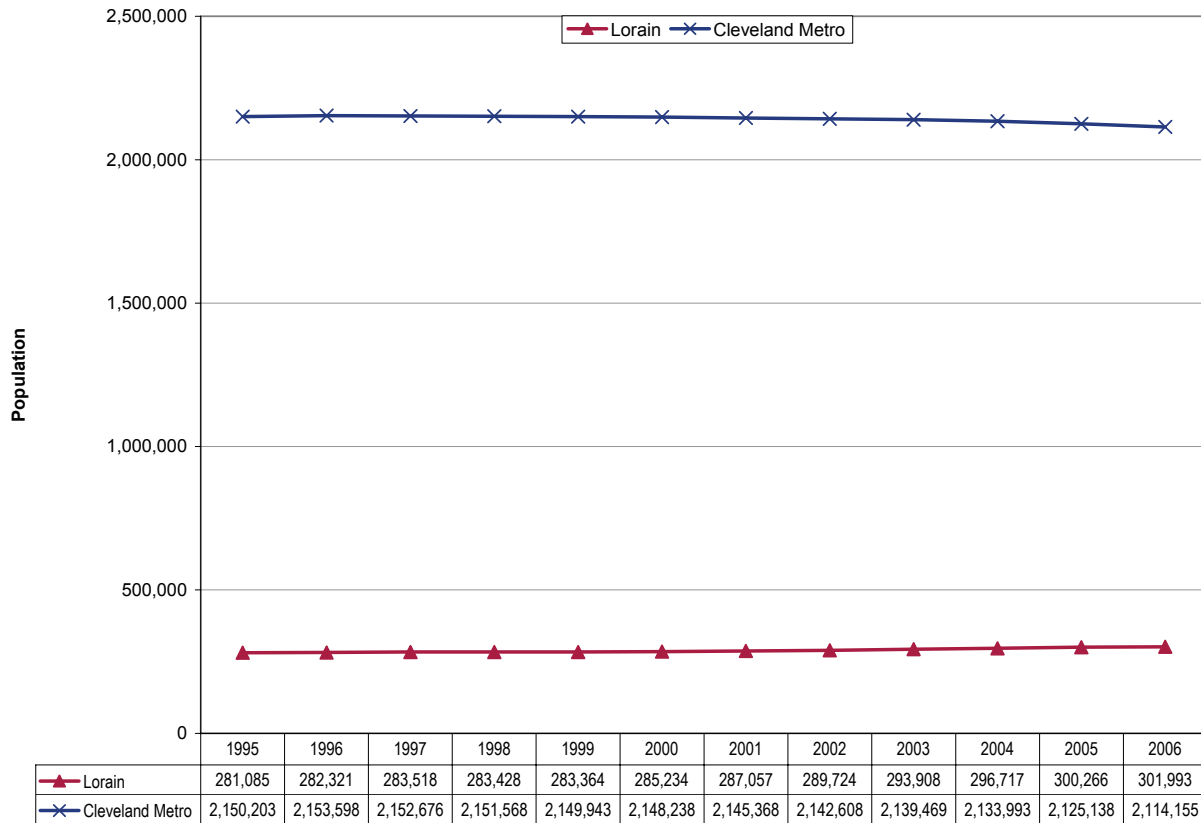
**Updates to Workforce Analysis Reports  
The Employment netWork  
July 2007**

This document contains updates to the Workforce Analysis report for The Employment netWork, published in March 2007. This is the Workforce Investment Area for Lorain County. For additional information, please see the Technical Notes at the end of this document.

**Table of Contents**

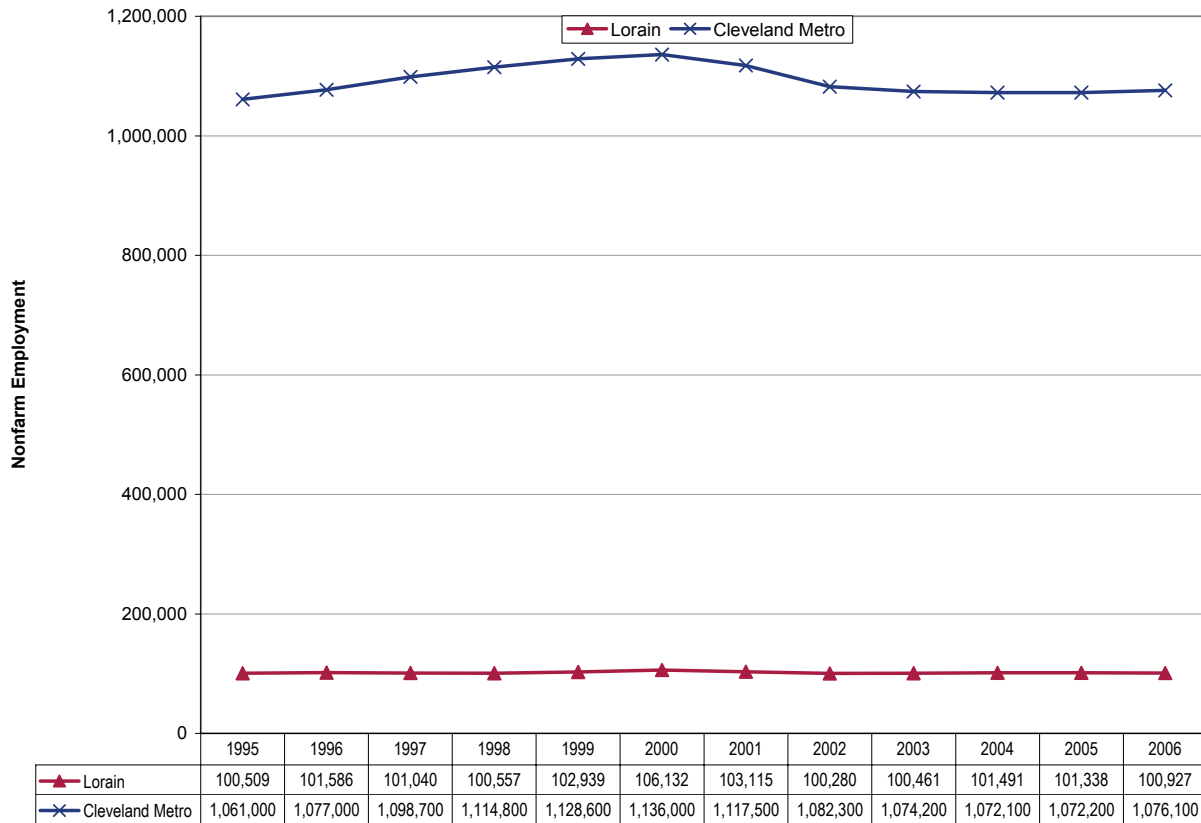
<b>Trends Update</b>	<b>Update to Page</b>
Population .....	3
Employment .....	4
Unemployment Rates .....	5
Per Capita Income.....	6
New Residential Building Permits .....	7

## Population



Population in Lorain County grew by about 21,000 residents to 302,000 from 1995 to 2006 (7.4%). Compared with a 1.7 percent decline in the larger metropolitan area, this suggests that residents are moving out of the central city into suburban communities. By comparison, statewide population grew 2.5 percent during this period while national population increased by 12.4 percent.

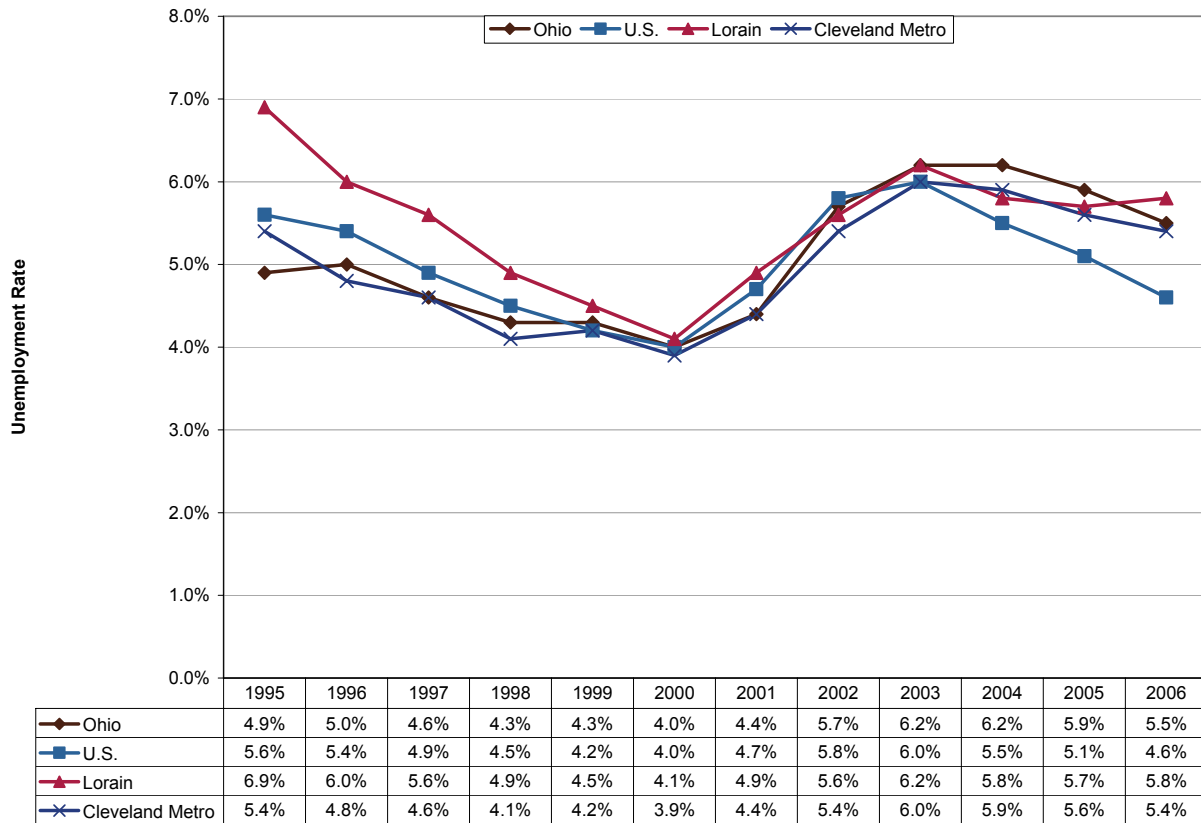
## Employment



While there was an increase in the number of jobs in this area during the late 1990s, total nonfarm employment in Lorain County declined by about 5,200 jobs (-4.9%) since 2000, compared with a 5.3 percent decline in the larger metropolitan area.<sup>1</sup> From 2000 to 2006, Ohio nonfarm employment fell 3.5 percent, after slight increases since 2003.

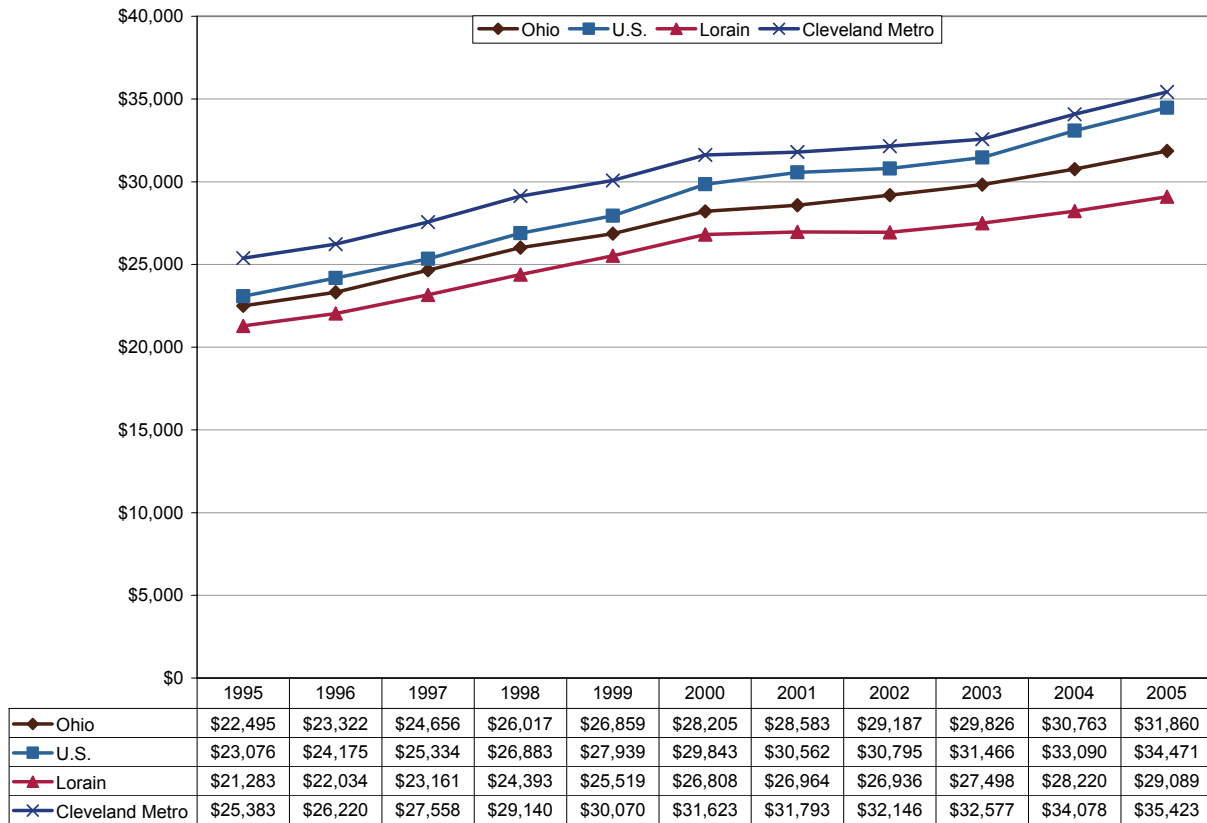
<sup>1</sup> The source of the data for the Cleveland metropolitan area is the Current Employment Statistics (CES) program. See Technical Notes for details.

## Unemployment Rates



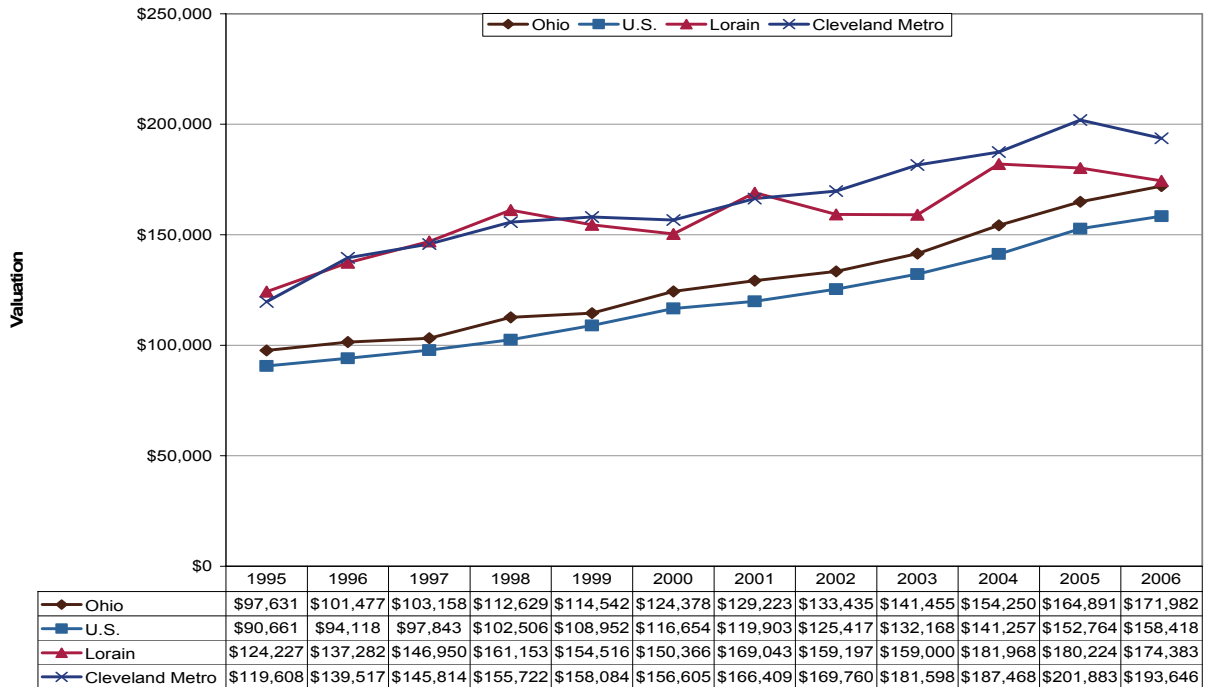
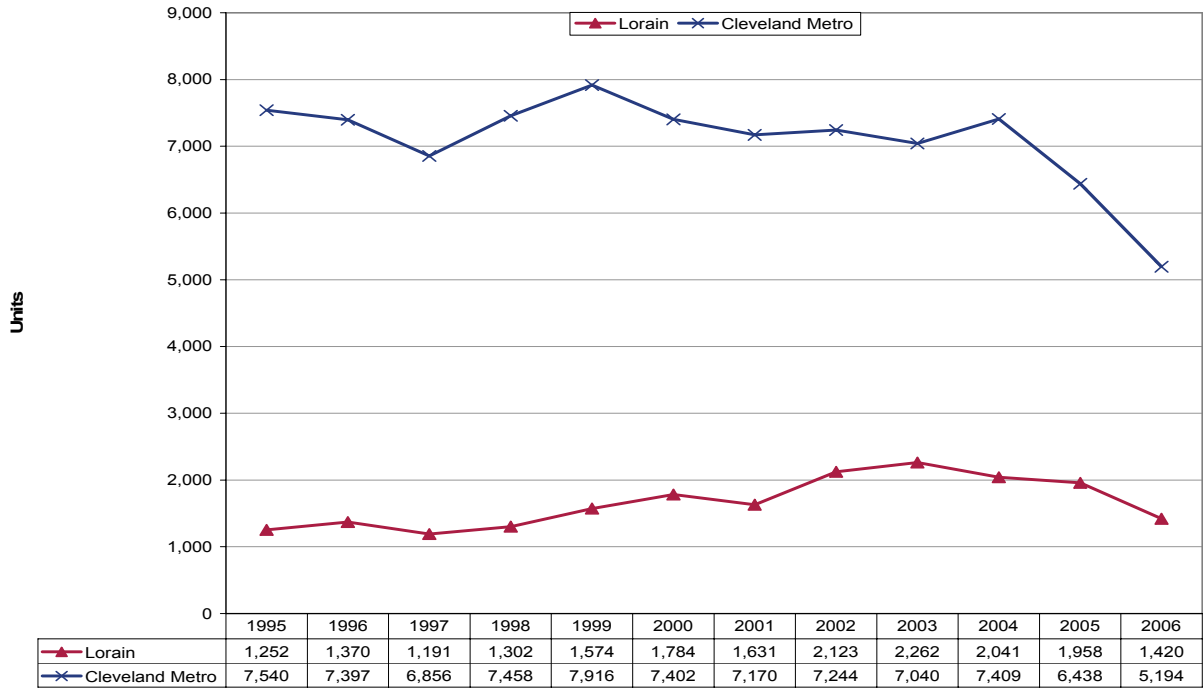
County unemployment was at 5.8 percent in 2006, 0.4 percentage point down from the last peak in 2003. In the last economic cycle, unemployment rates in Lorain County have been very similar to those for Ohio, the U.S. and the Cleveland metropolitan area. The 2006 unemployment rate for the metropolitan area was 5.4 percent. The Ohio and U.S. unemployment rates fell 0.7 and 1.4 percentage points from 2003, respectively.

### Per Capita Income



Per capita income in Lorain County in 2005 was \$29,089, lower than \$35,423 for the metropolitan area. Since 1995, per capita income climbed at a 3.2 percent annual compound rate, somewhat slower than the 3.4 percent annual growth for the Cleveland area. State and national growth rates were 3.5 percent and 4.1 percent, respectively.

## Residential Building Permits



In 2006 Lorain County granted 1,420 residential permits—about 27 percent of the metropolitan total for that year. Unit valuations have generally been on par with those for the Cleveland area, though they have lagged in recent years. Ohio building permits also began to decline in 2004. Nationwide, there was a significant drop in the number of residential building permits granted from 2005 to 2006.

## Technical Notes

For a map of Ohio's Workforce Investment system, please visit <http://lmi.state.oh.us/maps/MapofOneStops.htm>.

All population figures are annual estimates by the U.S. Census Bureau, published on the Internet as of May 2007. Analysts at the Ohio Bureau of Labor Market Information (LMI) summed county population to produce totals for local regions. Please visit <http://www.census.gov/popest/estimates.php> for additional information.

Employment figures for Lorain County are from the Quarterly Census of Employment and Wages by the U.S. Bureau of Labor Statistics (BLS) and LMI, published on the Internet in 2007. 2006 figures are based on preliminary quarterly data posted on the Labor Market Info Classic site and subject to revision this fall. Federal government employment, which is not covered by Ohio's unemployment compensation system, had inadvertently been omitted from the totals for 1995-1998 in the original report. That has been corrected in this update. In most counties the difference was negligible. Please visit [http://lmi.state.oh.us/cep/CEP\\_NAICS.htm#Publications](http://lmi.state.oh.us/cep/CEP_NAICS.htm#Publications) for additional statistics.

Employment figures for the Cleveland-Elyria-Mentor Metropolitan Statistical Area are from the Current Employment Statistics (CES) program by the BLS and LMI, published on the Internet in 2007. Please visit <http://lmi.state.oh.us/ces/lmr.htm#AnnualAverages> for additional statistics.

All unemployment figures are annualized, non-seasonally adjusted estimates by the Local Area Unemployment Statistics (LAUS) Section of LMI, published on the Internet as of May 2007. For additional statistics, please visit <http://lmi.state.oh.us/ASP/LAUS/vbLaus.htm>.

Per capita income figures for counties are in nominal dollars (not adjusted for inflation) and were published April 26, 2007 by the U.S. Bureau of Economic Analysis (BEA). Analysts at LMI calculated income figures for WIAs. For more information, please visit <http://www.bea.gov/regional/index.htm#state>.

Construction data are reported by the U.S. Census Bureau and are available through the Ohio Department of Development, Office of Strategic Research at [http://www.odod.state.oh.us/research/Reports in population and housing-Housing reports.htm#P6](http://www.odod.state.oh.us/research/Reports%20in%20population%20and%20housing-Housing%20reports.htm#P6). Analysts at LMI calculated summary data for WIAs. Data are also available at <http://www.census.gov/const/www/permitsindex.html>.