

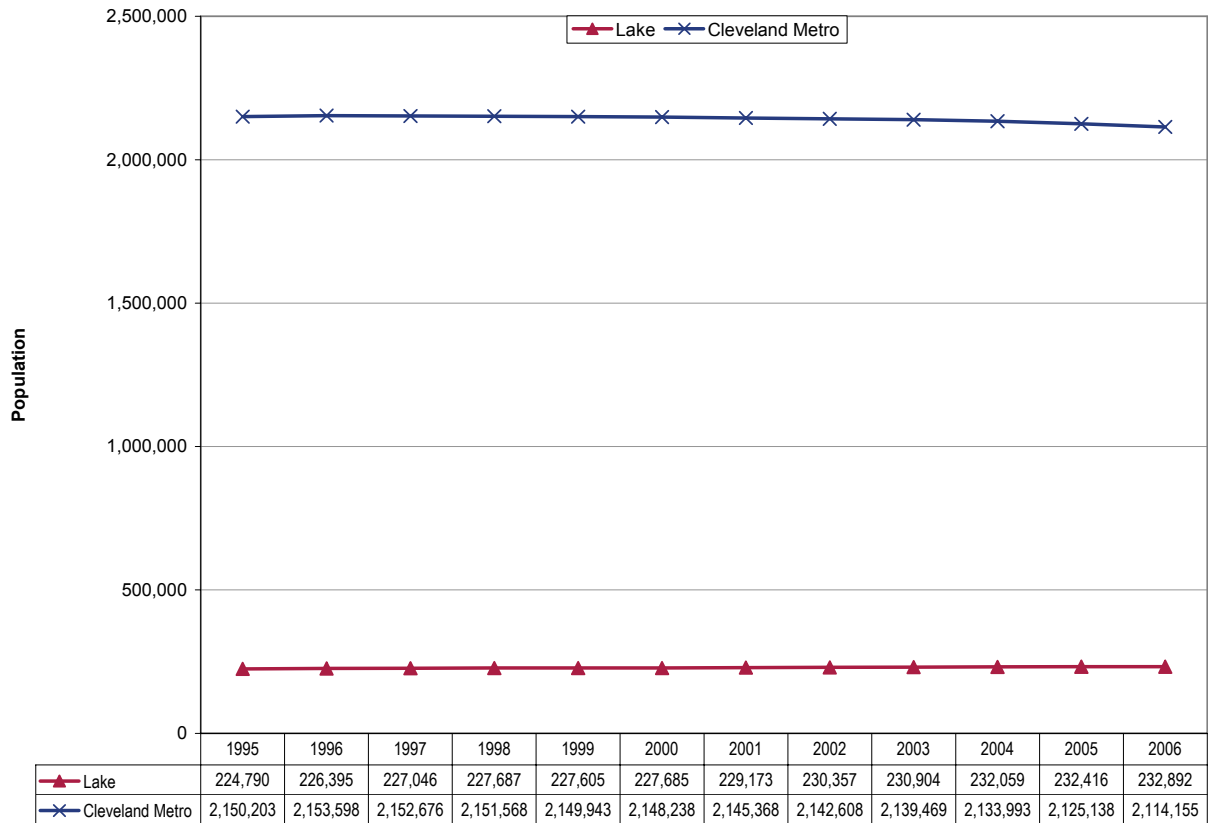
**Updates to Workforce Analysis Reports
Lake1Stop
July 2007**

This document contains updates to the Workforce Analysis report for Lake1Stop, published in March 2007. This is the Workforce Investment Area for Lake County. For additional information, please see the Technical Notes at the end of this document.

Table of Contents

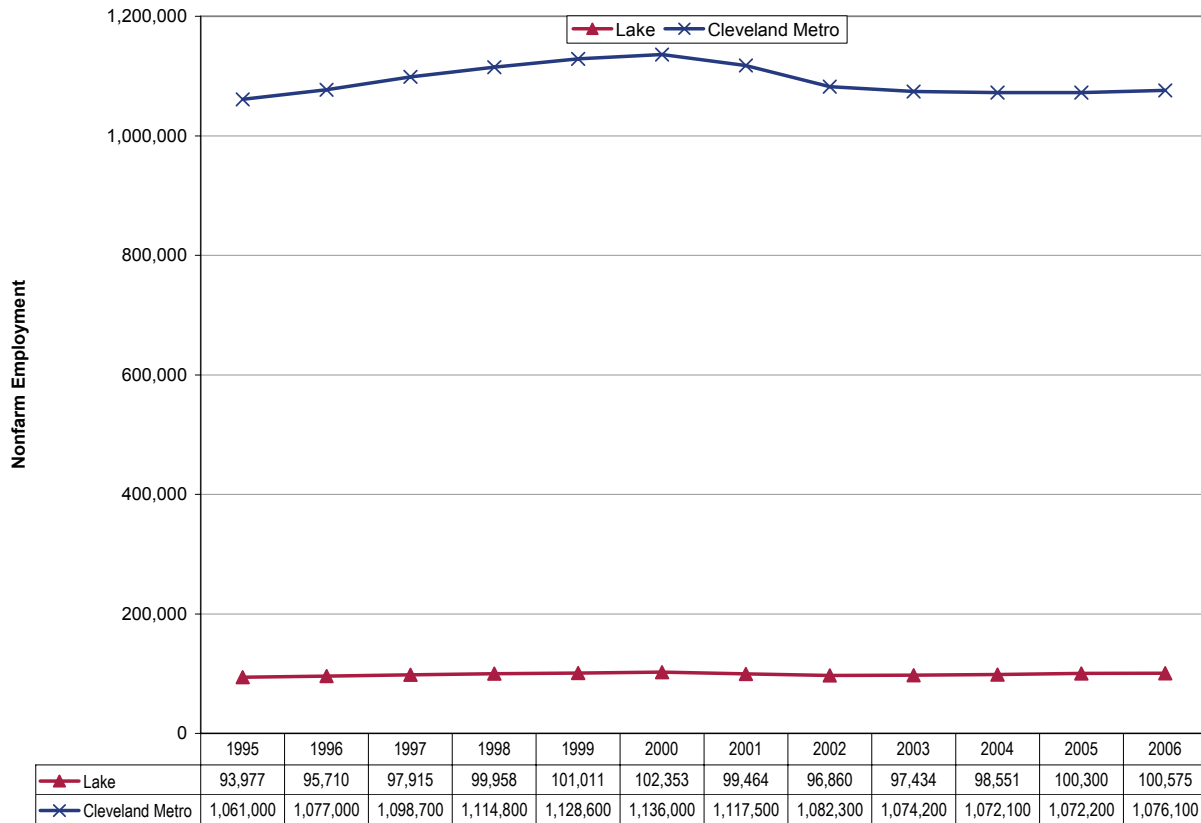
Trends Update	Update to Page
Population	3
Employment	4
Unemployment Rates	5
Per Capita Income.....	6
New Residential Building Permits	7

Population



Population in Lake County rose by about 8,100 residents from 1995 to 2006 to 232,900 (3.6%). Compared to a 1.7 percent decline in the Cleveland metropolitan area, this suggests that residents are moving out of the central city into suburban communities. For comparison, statewide population grew 2.5 percent during this period while national population increased by 12.4 percent.

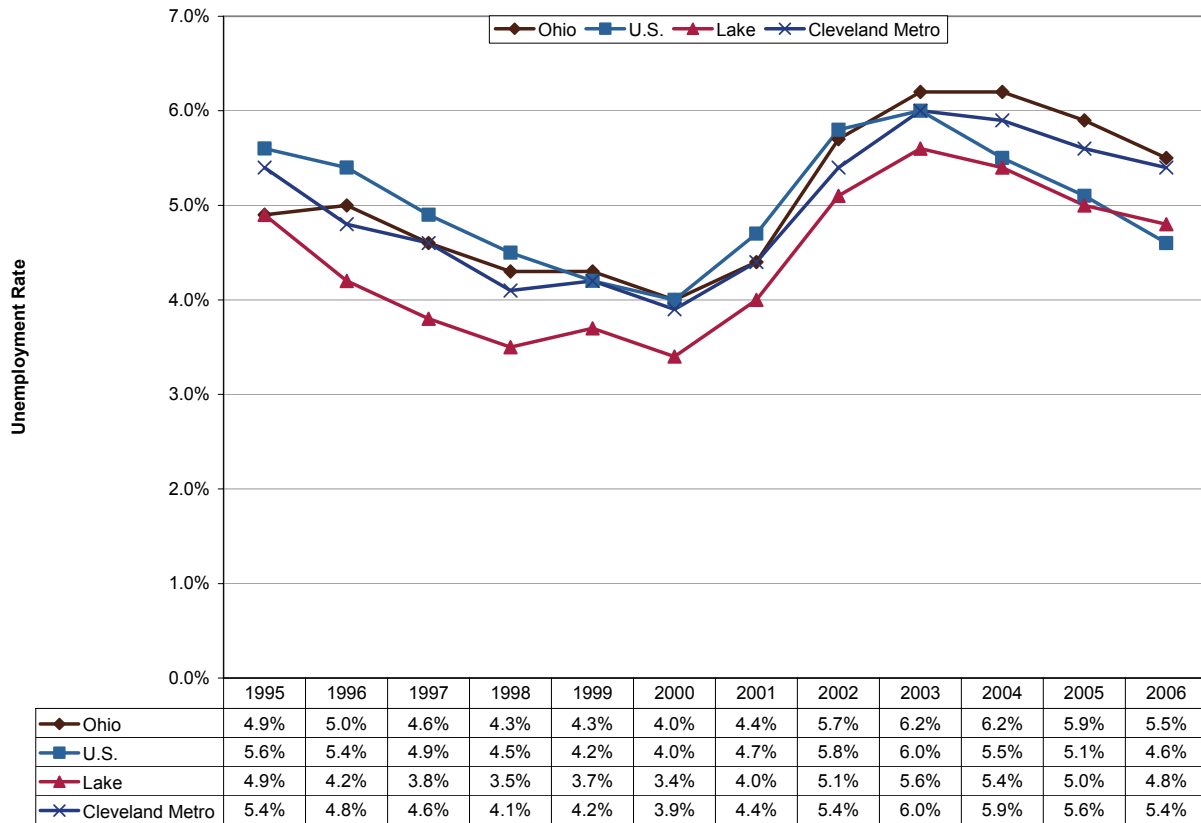
Employment



Since 2000, Lake County has shed nearly 1,800 jobs (-1.7%), but has been gaining jobs back since 2003. This employment loss was not as severe as that in the Cleveland metropolitan area during the same period (-5.3%).¹ By comparison, Ohio nonfarm employment fell 3.5 percent from 2000 to 2006, after slight increases since 2003.

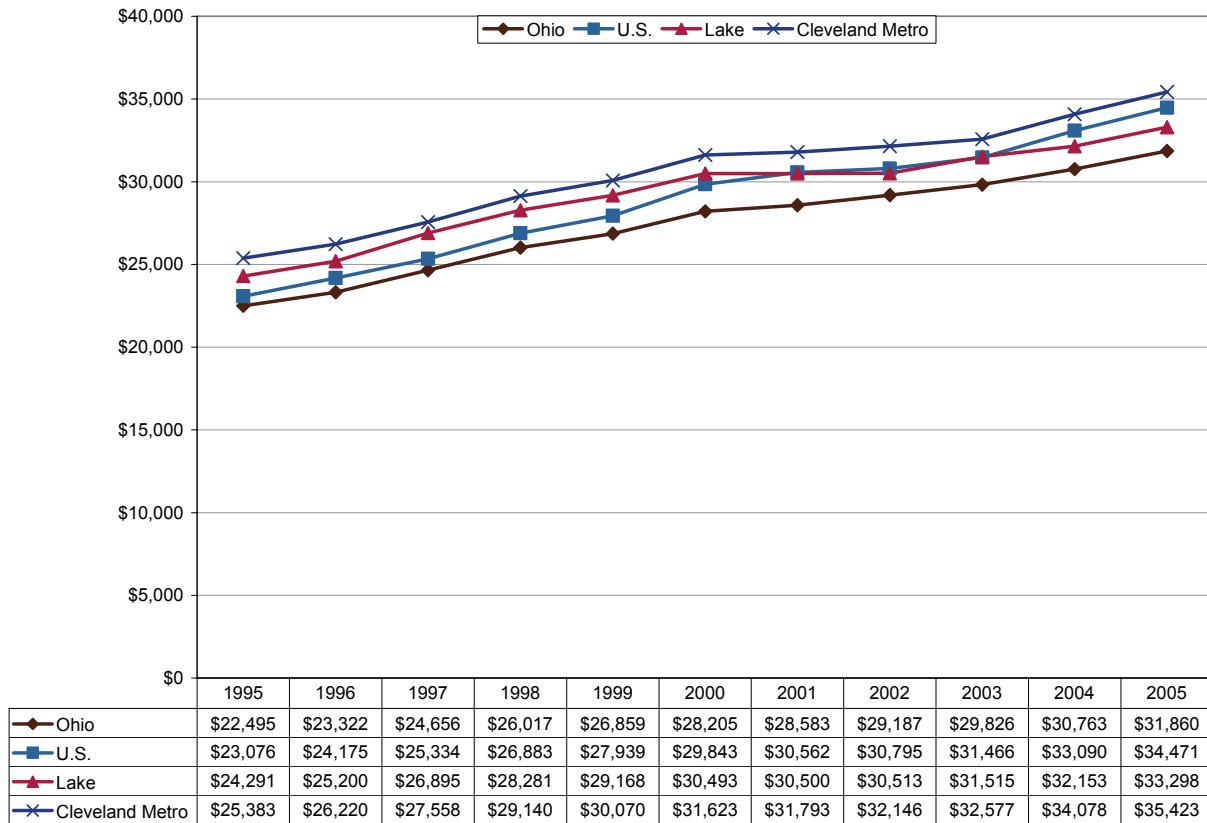
¹ The source of the data for the Cleveland metropolitan area is the Current Employment Statistics (CES) program. See Technical Notes for details.

Unemployment Rates



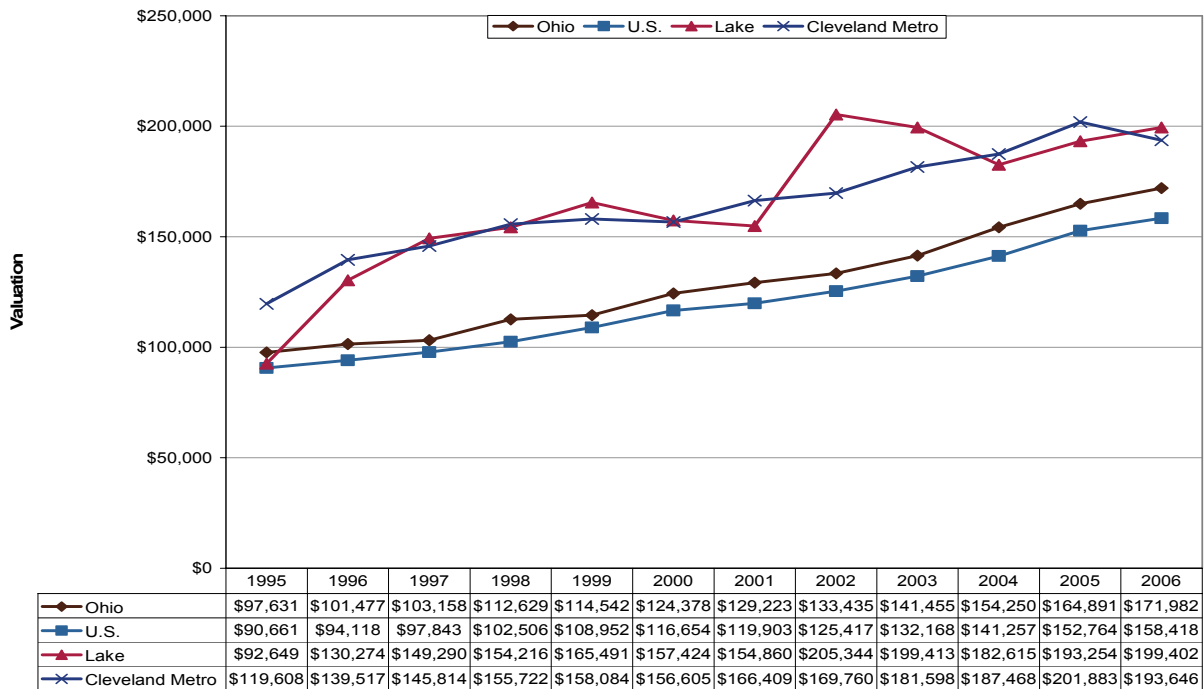
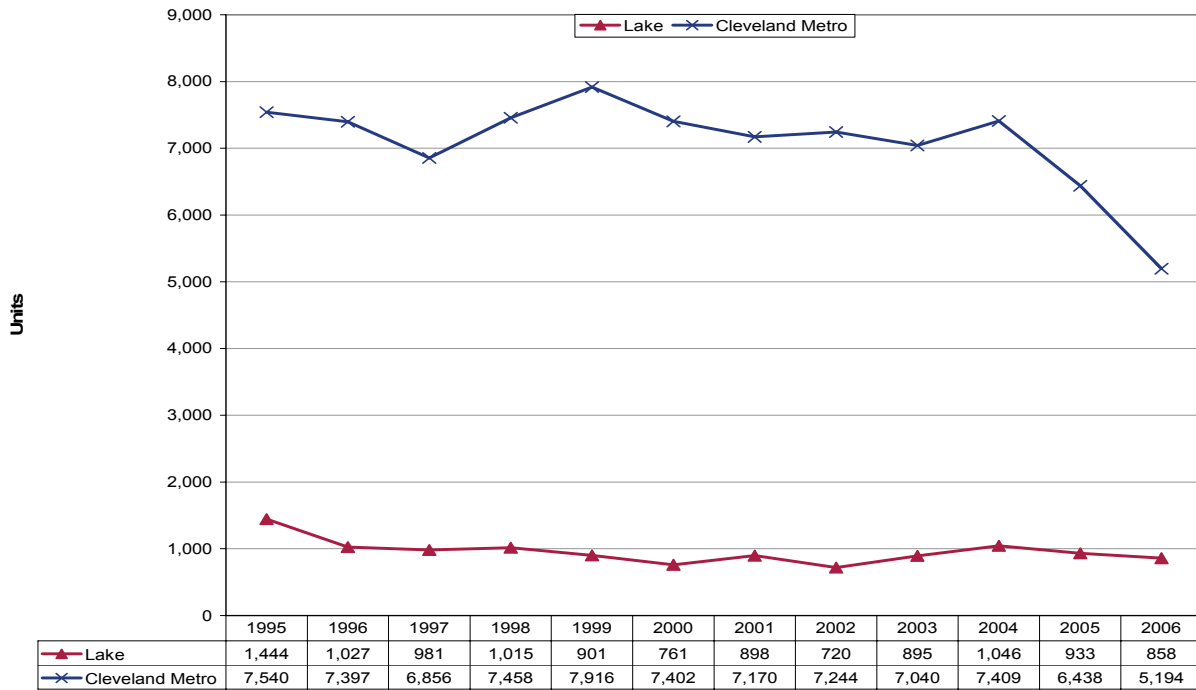
Lake County's unemployment rate in 2006 was 4.8 percent, down 0.8 percentage point from the last peak in 2003 and lower than the statewide rate of 5.5 percent that year. For comparison, the unemployment rate in the Cleveland metropolitan area was 5.4 percent in 2006. The Ohio and U.S. unemployment rates fell 0.7 and 1.4 percentage points from 2003, respectively.

Per Capita Income



Per capita income in 2005 was \$33,298, compared with \$35,423 for the Cleveland metropolitan area. Income has grown at a 3.2 percent annual compound rate since 1995, slower than the 3.4 percent growth for the metropolitan area. State and national growth rates were 3.5 percent and 4.1 percent, respectively.

Residential Building Permits



In 2006, Lake County granted 858 residential building permits—about 17 percent of the metropolitan total for that year. Construction activity has been fairly stable since 1995 and valuations have been typical for this metropolitan area. The number of Ohio permits began to decline in 2004. Nationwide, there was a significant drop in the number of new residential building permits granted from 2005 to 2006.

Technical Notes

For a map of Ohio's Workforce Investment system, please visit <http://lmi.state.oh.us/maps/MapofOneStops.htm>.

All population figures are annual estimates by the U.S. Census Bureau, published on the Internet as of May 2007. Analysts at the Ohio Bureau of Labor Market Information (LMI) summed county population to produce totals for local regions. Please visit <http://www.census.gov/popest/estimates.php> for additional information.

Employment figures for Lake County are from the Quarterly Census of Employment and Wages by the U.S. Bureau of Labor Statistics (BLS) and LMI, published on the Internet in 2007. 2006 figures are based on preliminary quarterly data posted on the Labor Market Info Classic site and subject to revision this fall. Federal government employment, which is not covered by Ohio's unemployment compensation system, had inadvertently been omitted from the totals for 1995-1998 in the original report. That has been corrected in this update. In most counties the difference was negligible. Please visit http://lmi.state.oh.us/cep/CEP_NAICS.htm#Publications for additional statistics.

Employment figures for the Cleveland-Elyria-Mentor Metropolitan Statistical Area are from the Current Employment Statistics (CES) program by the BLS and LMI, published on the Internet in 2007. Please visit <http://lmi.state.oh.us/ces/lmr.htm#AnnualAverages> for additional statistics.

All unemployment figures are annualized, non-seasonally adjusted estimates by the Local Area Unemployment Statistics (LAUS) Section of LMI, published on the Internet as of May 2007. For additional statistics, please visit <http://lmi.state.oh.us/ASP/LAUS/vbLaus.htm>.

Per capita income figures for counties are in nominal dollars (not adjusted for inflation) and were published April 26, 2007 by the U.S. Bureau of Economic Analysis (BEA). Analysts at LMI calculated income figures for WIAs. For more information, please visit <http://www.bea.gov/regional/index.htm#state>.

Construction data are reported by the U.S. Census Bureau and are available through the Ohio Department of Development, Office of Strategic Research at [http://www.odod.state.oh.us/research/Reports in population and housing-Housing reports.htm#P6](http://www.odod.state.oh.us/research/Reports%20in%20population%20and%20housing-Housing%20reports.htm#P6) . Analysts at LMI calculated summary data for WIAs. Data are also available at <http://www.census.gov/const/www/permitsindex.html>.