

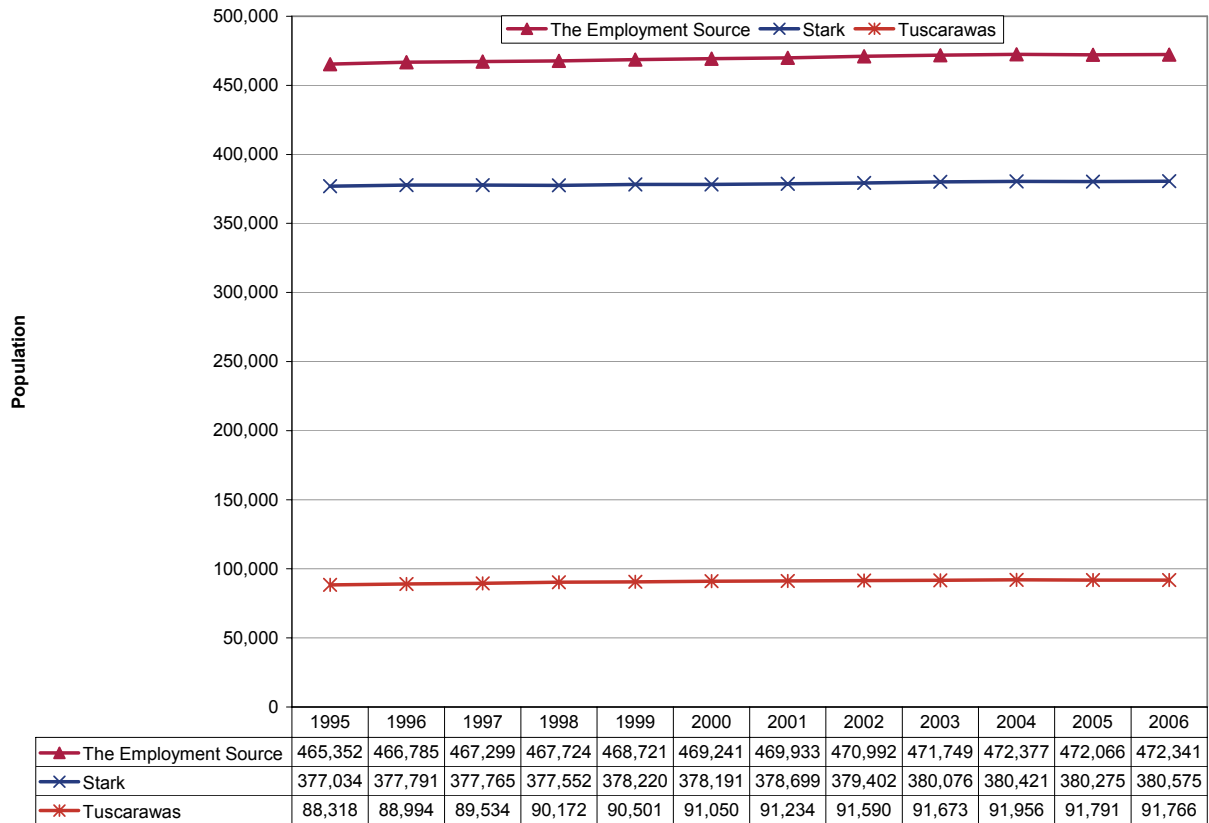
**Updates to Workforce Analysis Reports
The Employment Source
July 2007**

This document contains updates to the Workforce Analysis report for The Employment Source, published in March 2007. This area includes Stark and Tuscarawas Counties. For additional information, please see the Technical Notes at the end of this document.

Table of Contents

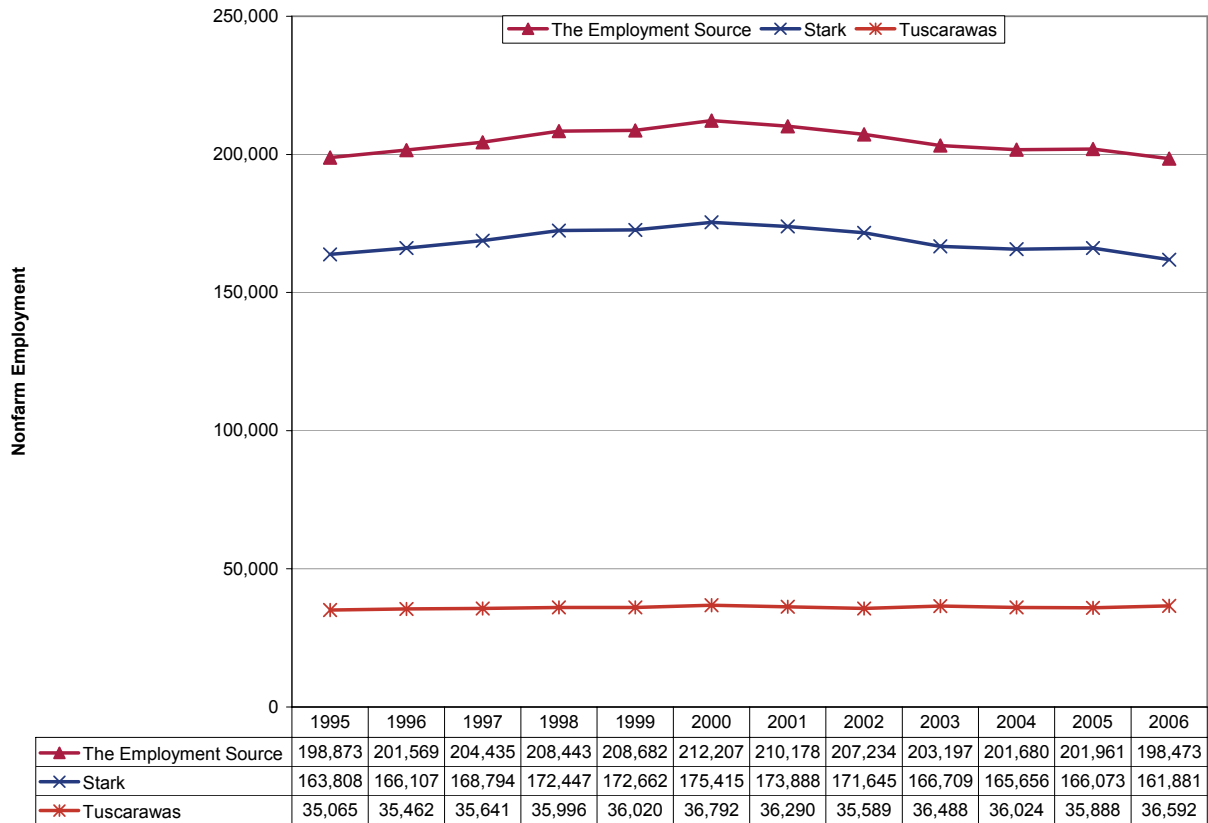
Trends Update	Update to Page
Population	3
Employment	4
Unemployment Rates	5
Per Capita Income.....	6
New Residential Building Permits	7

Population



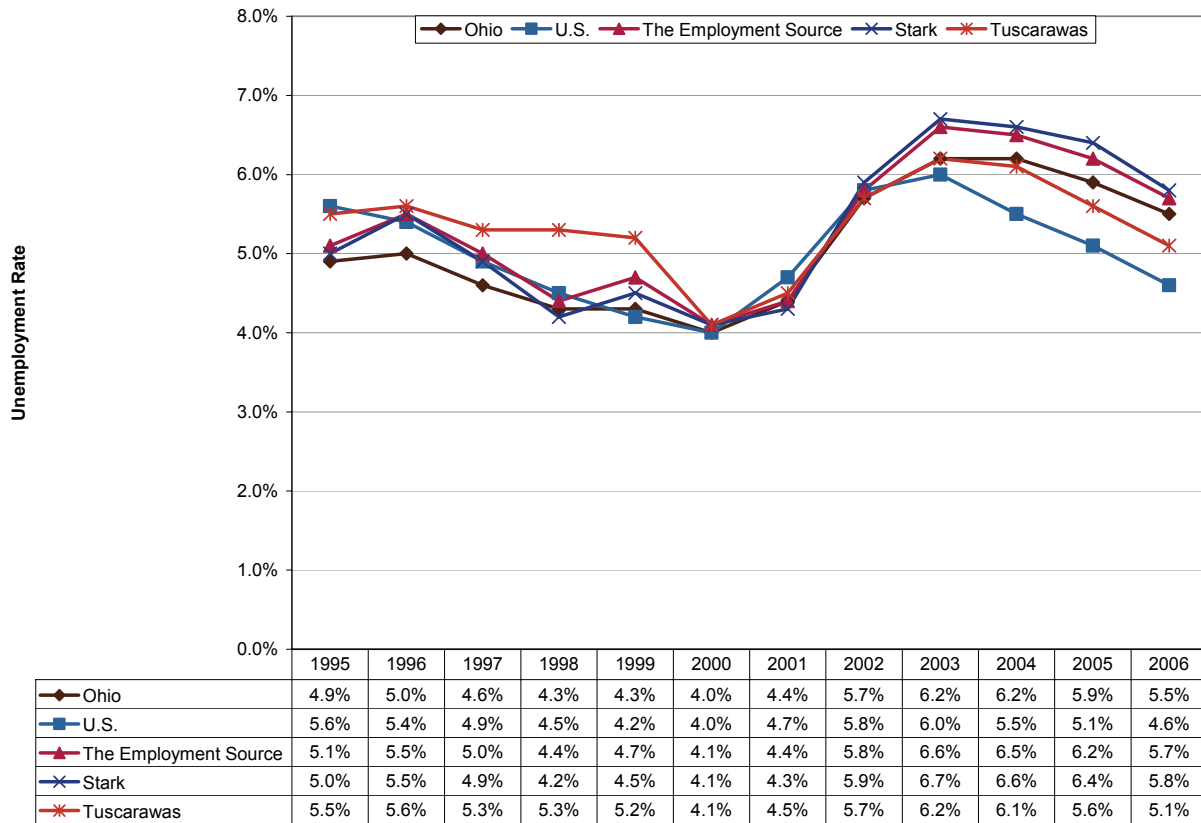
Area population increased 1.5 percent from 1995 to 2006 to 472,300 residents. Population in Stark County, part of the Canton-Massillon metropolitan area, grew less than one percent during this period to 380,600. Tuscarawas County's population rose 3.9 percent to 91,800. By comparison, statewide population grew 2.5 percent during this period while national population increased by 12.4 percent.

Employment



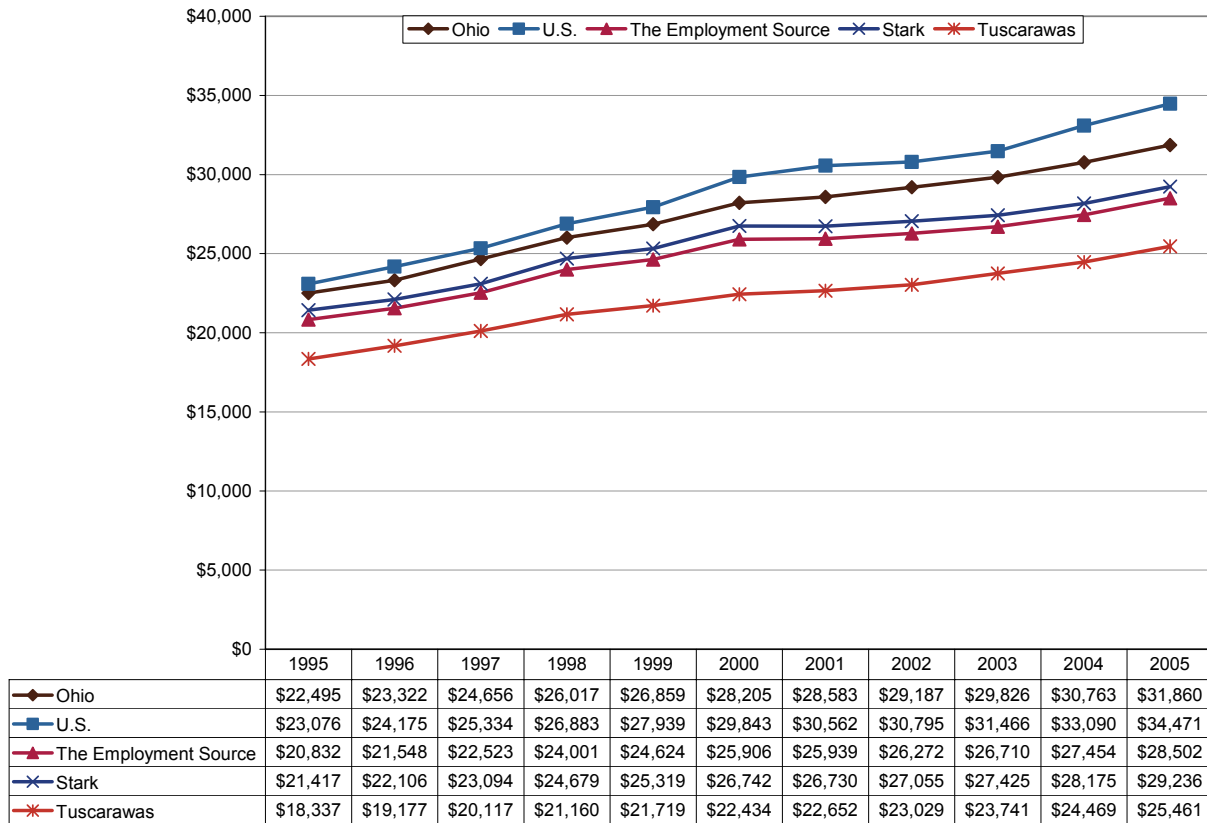
This region enjoyed significant job growth during the record economic expansion of the late 1990s, but since 2000, The Employment Source has lost nearly 14,000 jobs (-6.5%), mostly in Stark County. Tuscarawas County did not sustain any significant job loss after the 2001 recession, declining only half a percent. By comparison, Ohio nonfarm employment fell 3.5 percent from 2000 to 2006 after slight increases since 2003.

Unemployment Rates



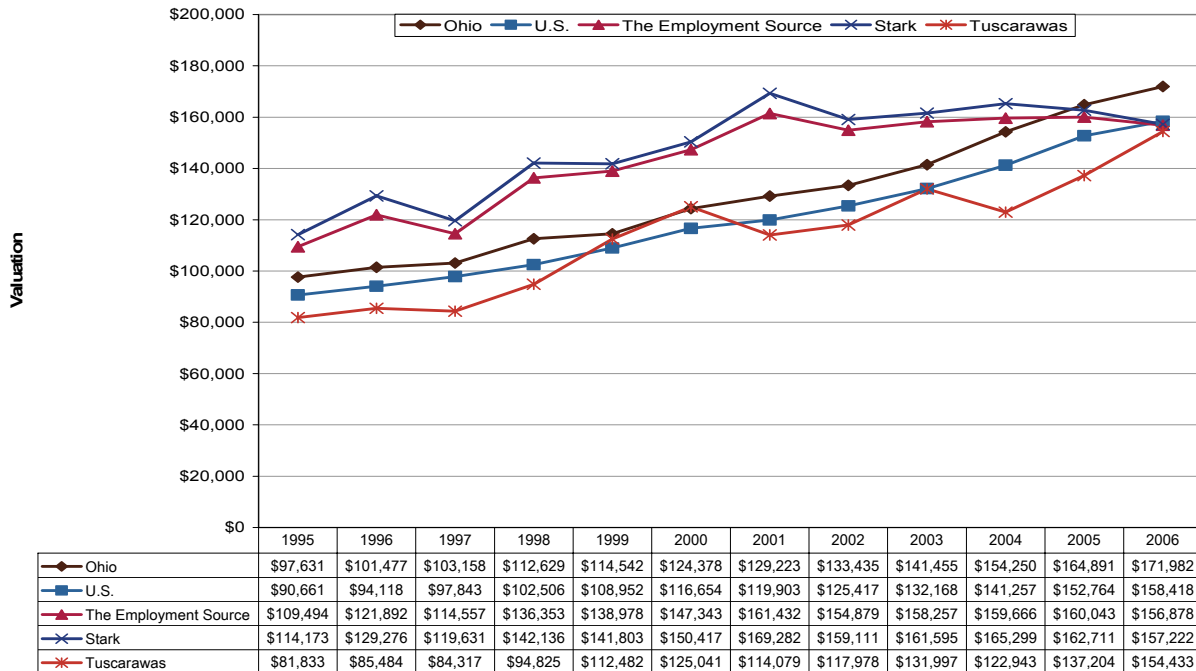
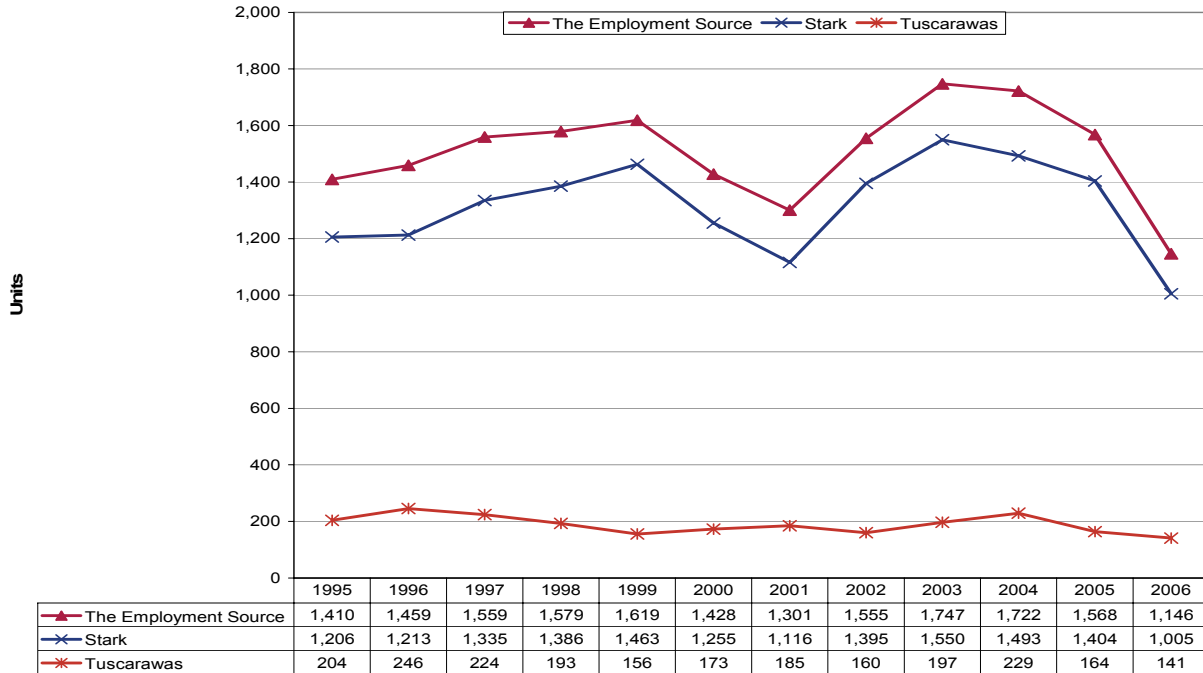
This region's unemployment rate was 5.7 percent in 2006, slightly higher than the state rate of 5.5 percent but 0.9 percentage points lower than the last peak in 2003. Until 2002, Tuscarawas County generally had the higher unemployment rate of the two counties, but today Stark County has the higher unemployment rate: 5.8 percent in 2006 compared to 5.1 percent in Tuscarawas County. The Ohio and U.S. unemployment rates fell 0.7 and 1.4 percentage points from their peaks in 2003, respectively.

Per Capita Income



Per capita income in this region was \$28,502 in 2005, having had a 3.2 percent annual compound rate of growth since 1995. During this period, Stark County generally had higher per capita incomes than Tuscarawas County; Stark County is part of the Canton-Massillon metropolitan area and urban areas tend to have higher incomes than rural areas. Tuscarawas County's income, however, grew at a slightly faster rate: 3.3 percent per year. State and national growth rates were 3.5 percent and 4.1 percent, respectively.

Residential Building Permits



While construction activity in Tuscarawas County has remained fairly stable from 1995 to 2006, Stark County was more strongly affected by the last business cycle. Like the region, Ohio permits for new residential construction also began to fall in 2004. Nationwide, there was a significant drop in the number of residential building permits granted from 2005 to 2006. Stark County had the region's more highly-valued housing units during this period.

Technical Notes

For a map of Ohio's Workforce Investment system, please visit <http://lmi.state.oh.us/maps/MapofOneStops.htm>.

All population figures are annual estimates by the U.S. Census Bureau, published on the Internet as of May 2007. Analysts at the Ohio Bureau of Labor Market Information (LMI) summed county population to produce totals for local regions. Please visit <http://www.census.gov/popest/estimates.php> for additional information.

Employment figures are from the Quarterly Census of Employment and Wages by the U.S. Bureau of Labor Statistics (BLS) and LMI, published on the Internet in 2007. 2006 figures are based on preliminary quarterly data posted on the Labor Market Info Classic site and subject to revision this fall. Federal government employment, which is not covered by Ohio's unemployment compensation system, had inadvertently been omitted from the totals for 1995-1998 in the original report. That has been corrected in this update. In most counties the difference was negligible. Please visit http://lmi.state.oh.us/cep/CEP_NAICS.htm#Publications for additional statistics.

All unemployment figures are annualized, non-seasonally adjusted estimates by the Local Area Unemployment Statistics (LAUS) Section of LMI, published on the Internet as of May 2007. For additional statistics, please visit <http://lmi.state.oh.us/ASP/LAUS/vbLaus.htm>.

Per capita income figures for counties are in nominal dollars (not adjusted for inflation) and were published April 26, 2007 by the U.S. Bureau of Economic Analysis (BEA). Analysts at LMI calculated income figures for WIAs. For more information, please visit <http://www.bea.gov/regional/index.htm#state>.

Construction data are reported by the U.S. Census Bureau and are available through the Ohio Department of Development, Office of Strategic Research at http://www.odod.state.oh.us/research/Reports_in_population_and_housing-Housing_reports.htm#P6. Analysts at LMI calculated summary data for WIAs. Data are also available at <http://www.census.gov/const/www/permitsindex.html>.