

**Updates to Workforce Analysis Reports
ACCENT One-Stop System
July 2007**

This document contains updates to the Workforce Analysis report for the ACCENT One-Stop System, published in January 2007. This area includes Allen, Paulding and Putnam Counties. For additional information, please see the Technical Notes at the end of this document.

Table of Contents

Trends Update	Update to Page
Population	3
Employment	4
Unemployment Rates	5
Per Capita Income.....	6
New Residential Building Permits	7

Population



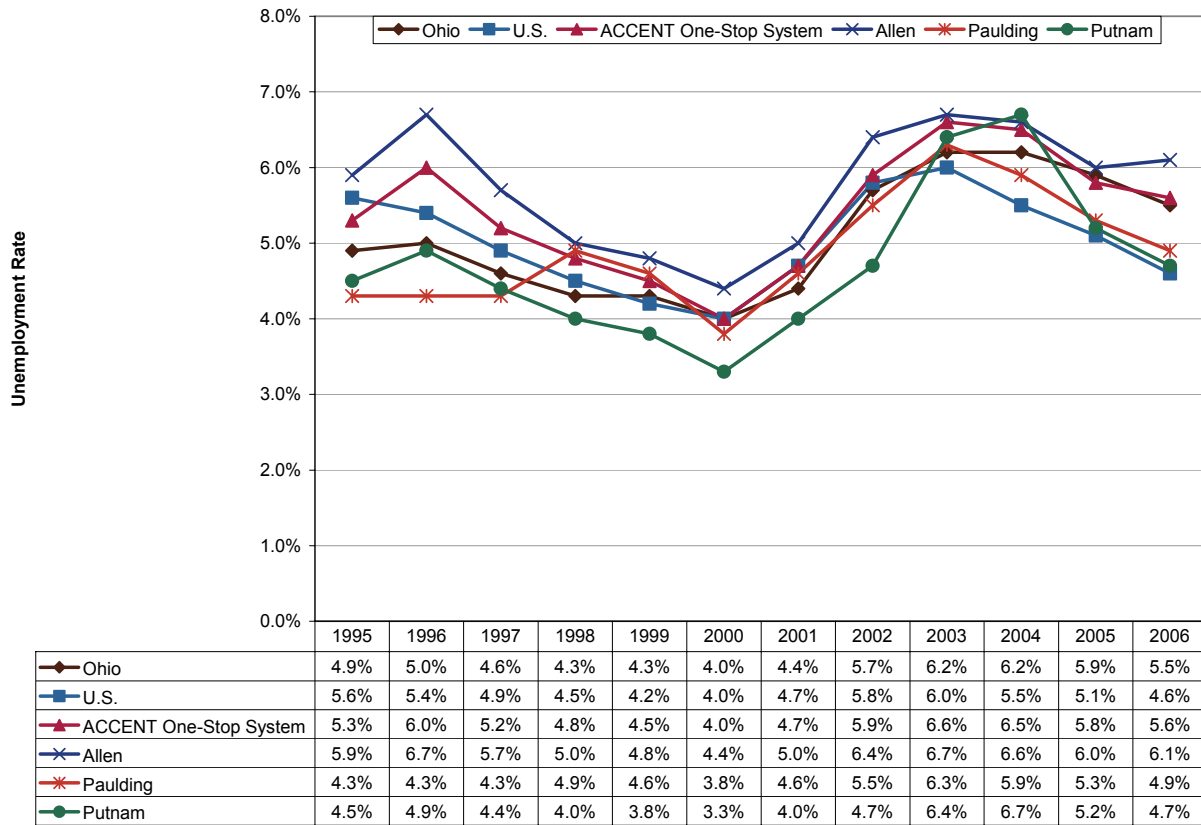
Population in this region fell 3.1 percent to 160,000 from 1995 to 2006. None of the three counties in this area gained residents during this period: Allen County—which is the Lima metropolitan area—declined 3.7 percent to 105,800 while Paulding County population declined 4.8 percent to 19,400 residents. Putnam County population held steady during this period. By comparison, Ohio's population grew 2.5 percent during this period.

Employment



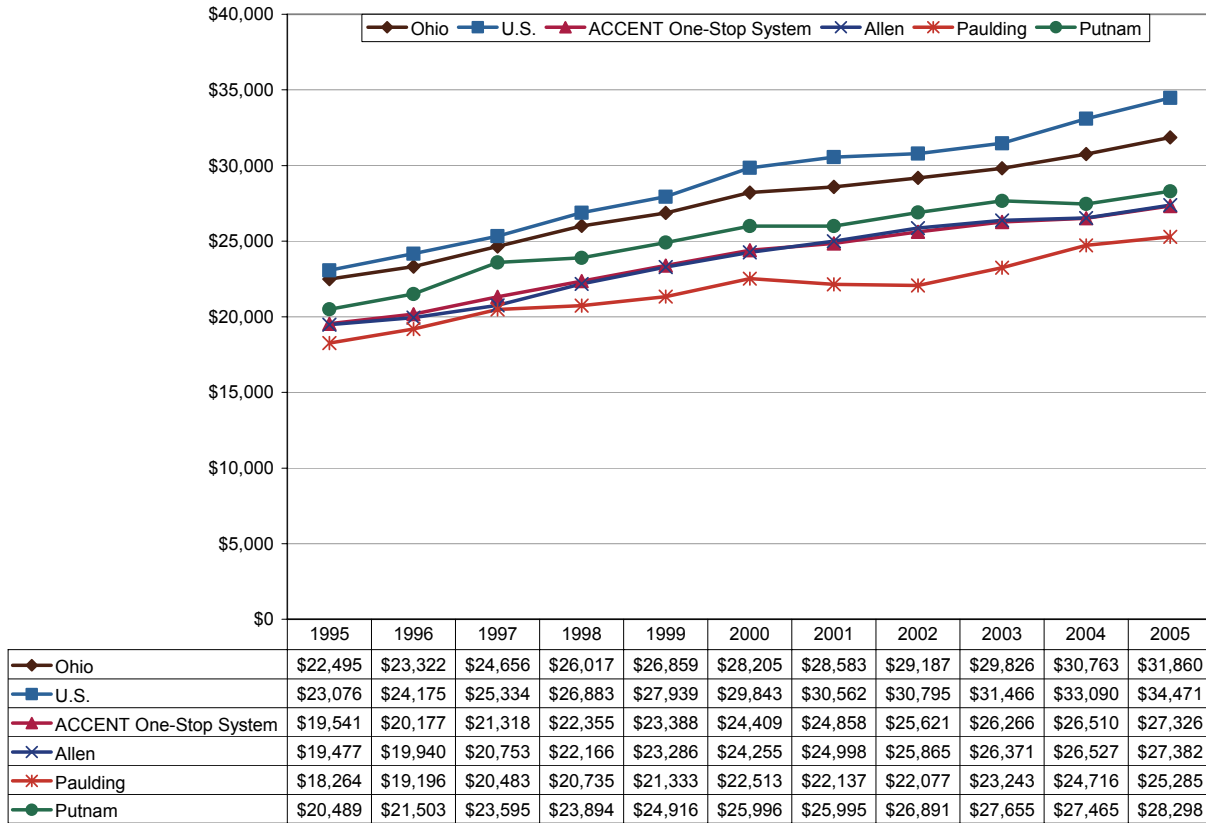
Total nonfarm employment in the ACCENT area was about 71,600 in 2006, a 2.0 percent net increase from 1995. However, this region had significant job losses following the 2001 recession (-7.2%) and has not yet fully recovered. Allen County in particular lost 4,200 jobs between 2000 and 2006 (-7.1%). Putnam County had the largest relative employment decline: 10.2 percent. For comparison, Ohio employment fell 3.5 percent from 2000 through 2006 after slight gains since 2003.

Unemployment Rates



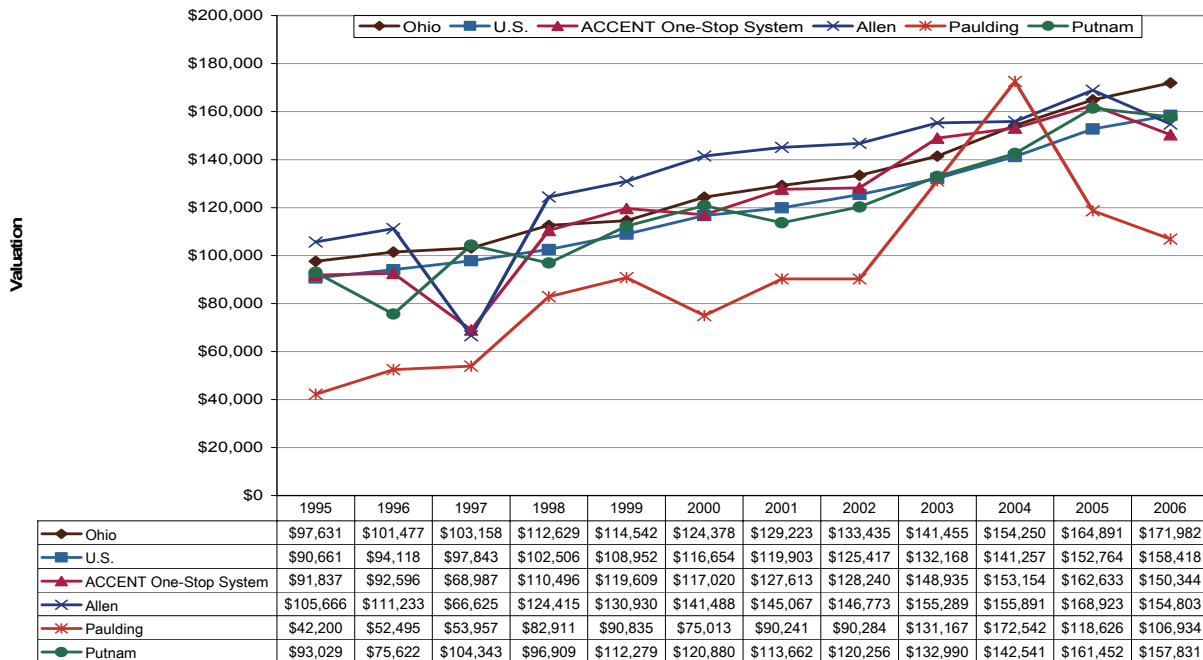
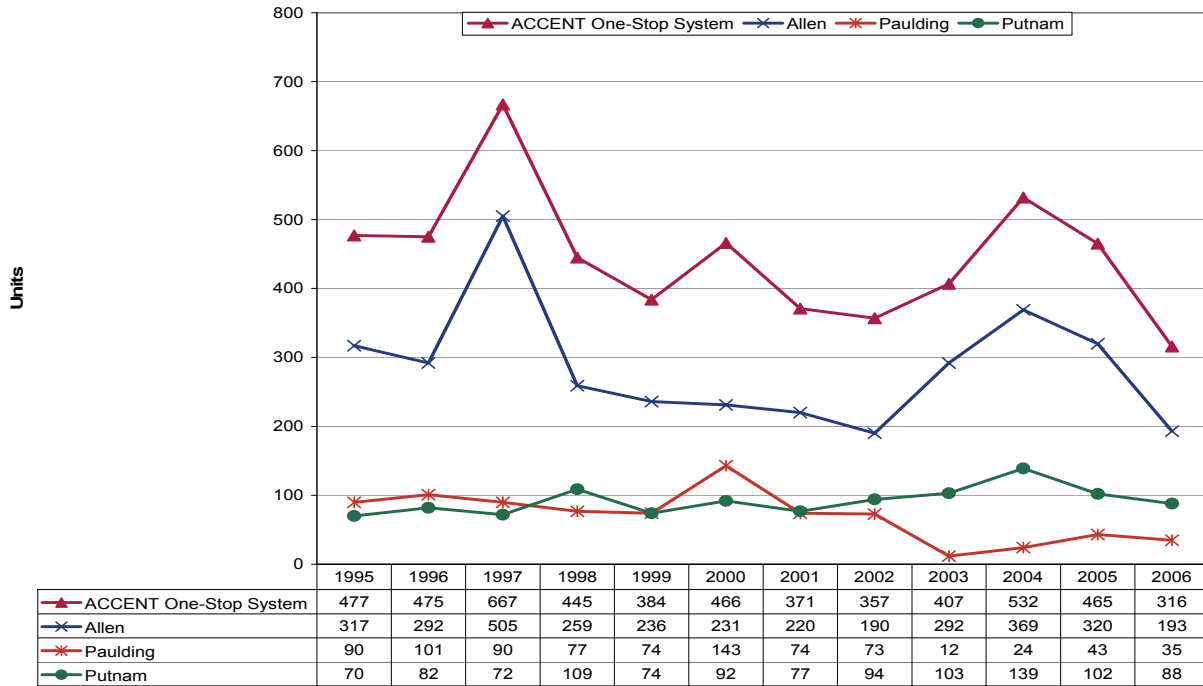
The ACCENT unemployment rate was 5.6 percent in 2006, down one percentage point from the last peak in 2003. Putnam County has generally had the area's lowest unemployment rates from 1995 to 2006: 4.7 percent by the end of this period—below the statewide rate of 5.5 percent. Allen County, the Lima metropolitan area, has generally had the highest rate: 6.1 percent in 2006.

Per Capita Income



Per capita income was \$27,326 in 2005, an average annual compound rate of growth of 3.4 percent from 1995. Putnam County had the area's highest per capita incomes during this time: \$28,298 in 2005. This is unusual, since rural areas like Putnam County normally tend to have lower income levels than urban areas such as Allen County (the Lima metropolitan area). Paulding County had the area's lowest per capita income levels over this period: \$25,285 in 2005. For comparison, per capita income in Ohio grew 3.5 percent per year during this period while national per capita income increased 4.1 percent.

Residential Building Permits



Residential construction permits have fallen recently in this region, as well as in Ohio and nationally. Being the Lima metropolitan area, Allen County had both the greatest number of permits granted and the highest average valuation between 1995 and 2006. The spike in average unit valuation in Paulding County in 2004 was largely due the fact that all units this year were single-family units, which tend to have higher valuations than multi-family units.

Technical Notes

For a map of Ohio's Workforce Investment system, please visit <http://lmi.state.oh.us/maps/MapofOneStops.htm>.

All population figures are annual estimates by the U.S. Census Bureau, published on the Internet as of May 2007. Analysts at the Ohio Bureau of Labor Market Information (LMI) summed county population to produce totals for local regions. Please visit <http://www.census.gov/popest/estimates.php> for additional information.

Employment figures are from the Quarterly Census of Employment and Wages by the U.S. Bureau of Labor Statistics (BLS) and LMI, published on the Internet in 2007. 2006 figures are based on preliminary quarterly data posted on the Labor Market Info Classic site and subject to revision this fall. Federal government employment, which is not covered by Ohio's unemployment compensation system, had inadvertently been omitted from the totals for 1995-1998 in the original report. That has been corrected in this update. In most counties the difference was negligible. Please visit http://lmi.state.oh.us/cep/CEP_NAICS.htm#Publications for additional statistics.

All unemployment figures are annualized, non-seasonally adjusted estimates by the Local Area Unemployment Statistics (LAUS) Section of LMI, published on the Internet as of May 2007. For additional statistics, please visit <http://lmi.state.oh.us/ASP/LAUS/vbLaus.htm>.

Per capita income figures for counties are in nominal dollars (not adjusted for inflation) and were published April 26, 2007 by the U.S. Bureau of Economic Analysis (BEA). Analysts at LMI calculated income figures for WIAs. For more information, please visit <http://www.bea.gov/regional/index.htm#state>.

Construction data are reported by the U.S. Census Bureau and are available through the Ohio Department of Development, Office of Strategic Research at http://www.odod.state.oh.us/research/Reports_in_population_and_housing-Housing_reports.htm#P6. Analysts at LMI calculated summary data for WIAs. Data are also available at <http://www.census.gov/const/www/permitsindex.html>.