

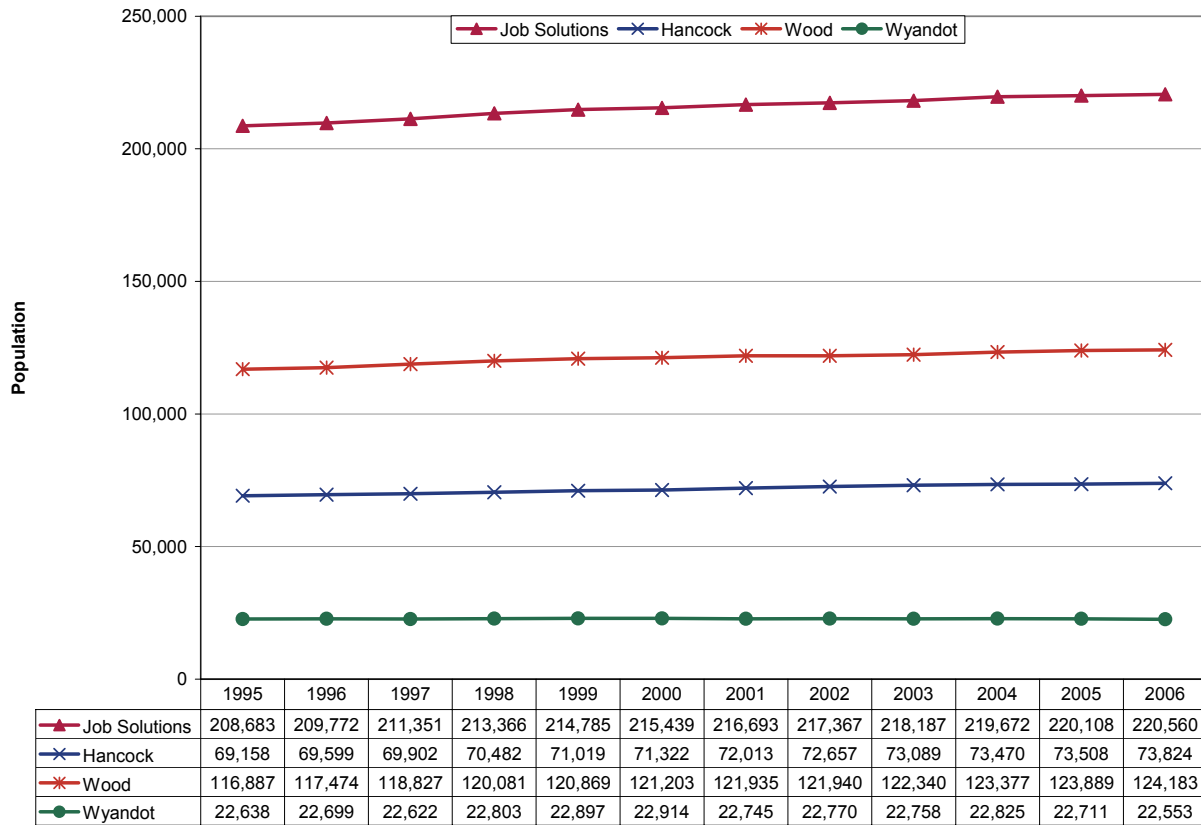
**Updates to Workforce Analysis Reports
Job Solutions
July 2007**

This document contains updates to the Workforce Analysis report for the Job Solutions area, published in January 2007. This area includes Hancock, Wood and Wyandot Counties. For additional information, please see the Technical Notes at the end of this document.

Table of Contents

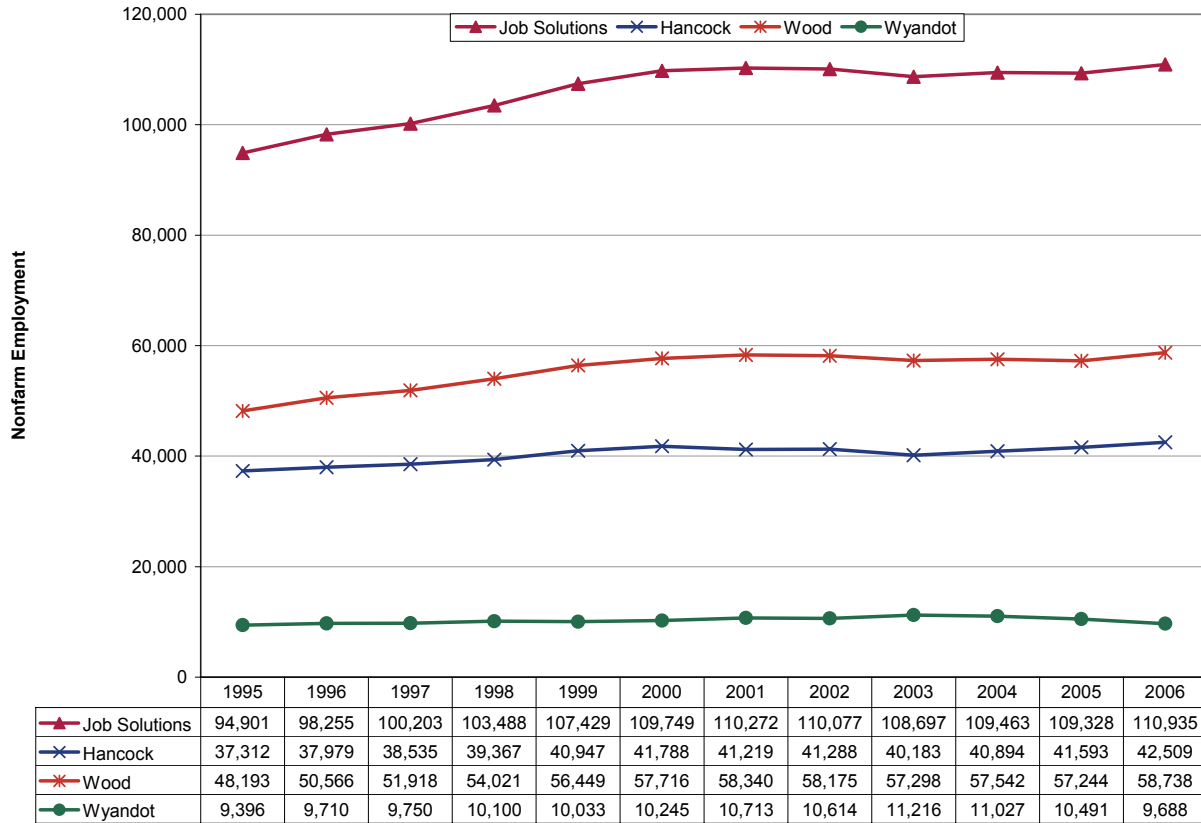
Trends Update	Update to Page
Population	3
Employment	4
Unemployment Rates	5
Per Capita Income.....	6
New Residential Building Permits	7

Population



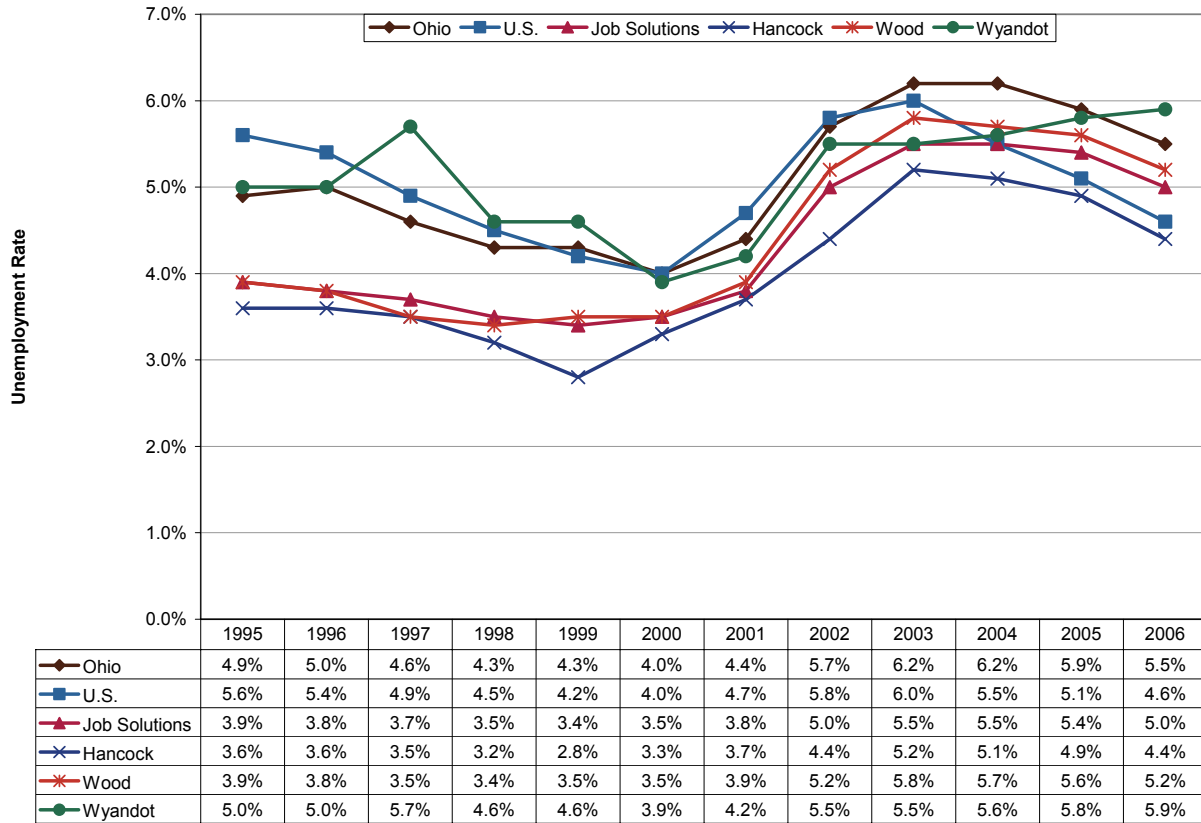
Population in this area grew 5.7 percent to 220,600 residents from 1995 to 2006. Hancock County's population grew 6.7 percent to 73,800 while Wood County—part of the Toledo metropolitan area—grew 6.4 percent during this period to 124,200 residents. Population in Wyandot County held steady throughout the period, remaining about 22,600. By comparison, statewide population grew 2.5 percent during this period while national population increased 12.4 percent.

Employment



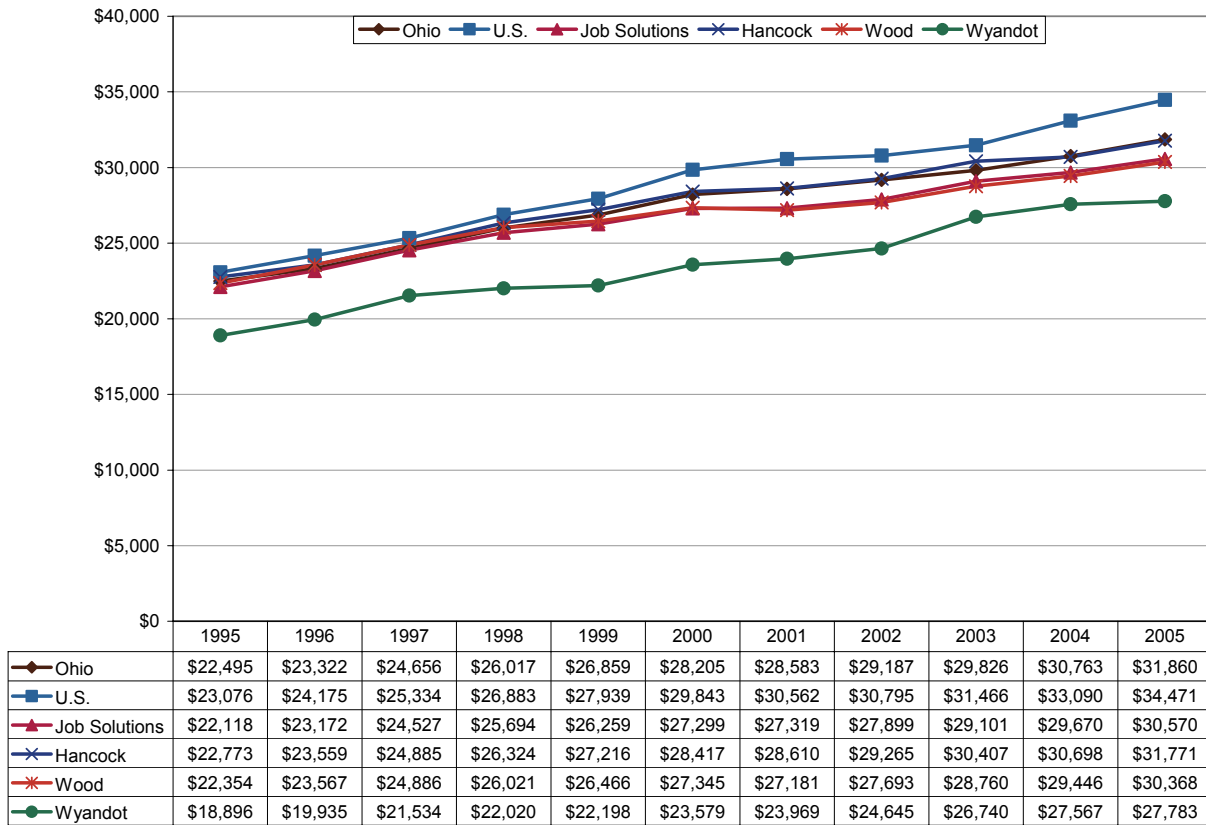
From 1995 to 2006, total nonfarm employment in the Job Solutions area grew from 94,900 to 110,900 jobs, an increase of 16.8 percent. Most of this growth was driven by Wood County, where employment expanded 21.9 percent during this period, especially prior to the 2001 recession. Hancock County also saw a significant number of net new jobs added (13.9%). Job growth in Wyandot County was more modest: only about 300 positions. By comparison, Ohio nonfarm employment grew 4.0 percent while U.S. employment grew 16.1 percent during this period. This region stands out because the decline in employment during the last recession was small, and lost jobs were recovered by 2006.

Unemployment Rates



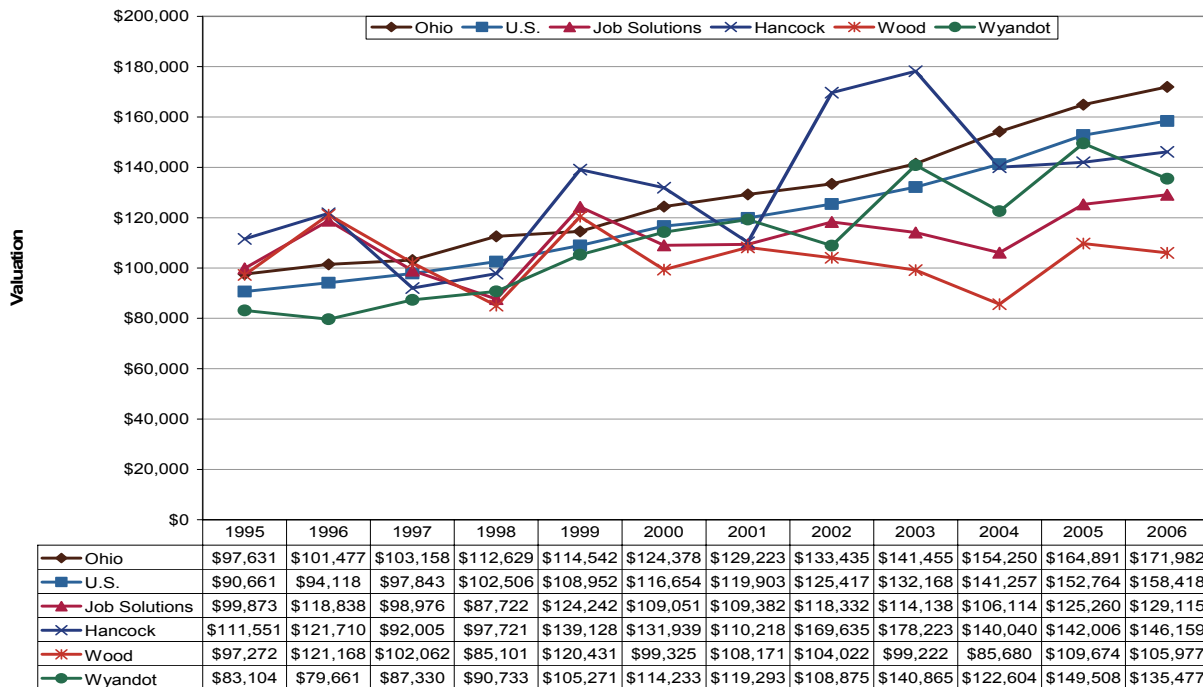
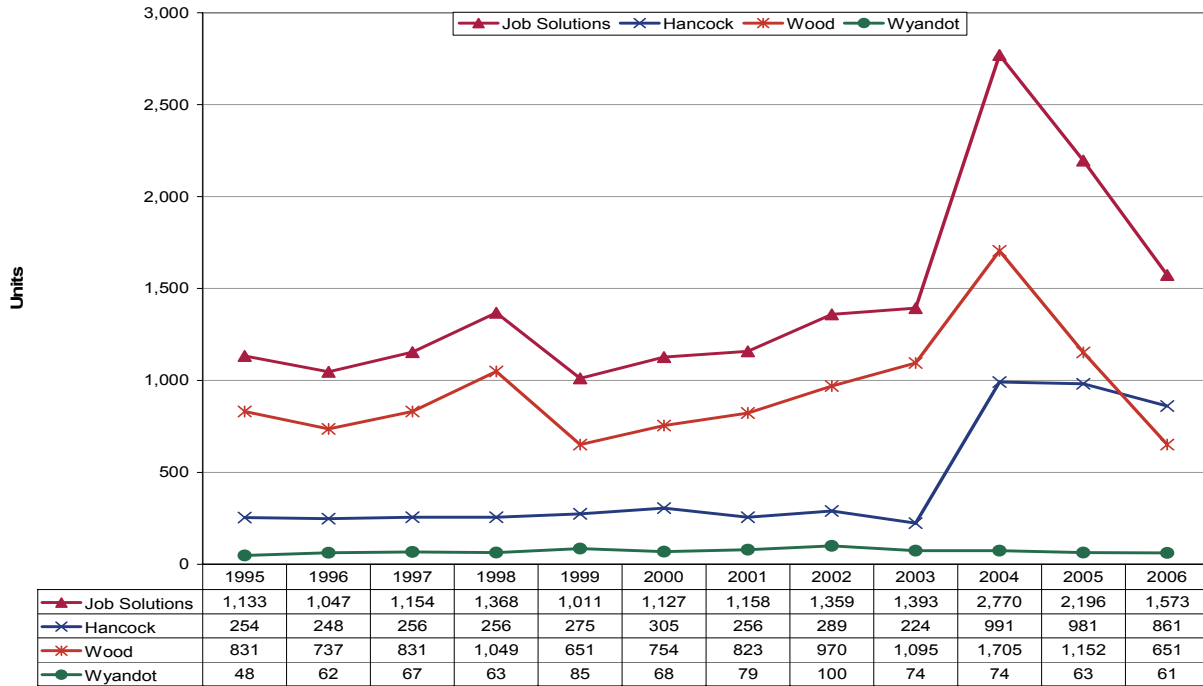
The unemployment rate in the Job Solutions region was 5.0 percent in 2006, half a percentage point lower than the peak in 2004 and the current statewide rate. Wyandot County generally had the region's highest unemployment rates between 1995 and 2006: 5.9 percent at the end of this period. Hancock County had the area's lowest unemployment rates during this period: 4.4 percent in 2006. The Ohio and U.S. unemployment rates fell 0.7 and 1.4 percentage points, respectively, from their peaks in 2003.

Per Capita Income



Area per capita income in 2005 was \$30,570, a 3.3 percent annual average compound rate of growth from 1995. Wyandot County's income levels were significantly below the area average over the period of analysis—only \$27,783 in 2005. Rural areas tend to have lower income levels than urban areas. However, Hancock County generally had higher per capita income levels than Wood County during this period, even though Wood County is part of the Toledo metropolitan area. This may be due in part to Wood County's slightly larger student population. State and national growth rates were 3.5 percent and 4.1 percent, respectively.

Residential Building Permits



About 1,600 housing permits were granted in 2006, cooling off from a boom in 2004. Hancock County generally had the area's highest average valuations between 1995 and 2006. Wood County generally had the lowest valuations during this period, despite a large proportion of more highly-valued single-family units. Nationwide, there was a significant drop in the number of residential building permits granted from 2005 to 2006.

Technical Notes

For a map of Ohio's Workforce Investment system, please visit <http://lmi.state.oh.us/maps/MapofOneStops.htm>.

All population figures are annual estimates by the U.S. Census Bureau, published on the Internet as of May 2007. Analysts at the Ohio Bureau of Labor Market Information (LMI) summed county population to produce totals for local regions. Please visit <http://www.census.gov/popest/estimates.php> for additional information.

Employment figures are from the Quarterly Census of Employment and Wages by the U.S. Bureau of Labor Statistics (BLS) and LMI, published on the Internet in 2007. 2006 figures are based on preliminary quarterly data posted on the Labor Market Info Classic site and subject to revision this fall. Federal government employment, which is not covered by Ohio's unemployment compensation system, had inadvertently been omitted from the totals for 1995-1998 in the original report. That has been corrected in this update. In most counties the difference was negligible. Please visit http://lmi.state.oh.us/cep/CEP_NAICS.htm#Publications for additional statistics.

All unemployment figures are annualized, non-seasonally adjusted estimates by the Local Area Unemployment Statistics (LAUS) Section of LMI, published on the Internet as of May 2007. For additional statistics, please visit <http://lmi.state.oh.us/ASP/LAUS/vbLaus.htm>.

Per capita income figures for counties are in nominal dollars (not adjusted for inflation) and were published April 26, 2007 by the U.S. Bureau of Economic Analysis (BEA). Analysts at LMI calculated income figures for WIAs. For more information, please visit <http://www.bea.gov/regional/index.htm#state>.

Construction data are reported by the U.S. Census Bureau and are available through the Ohio Department of Development, Office of Strategic Research at http://www.odod.state.oh.us/research/Reports_in_population_and_housing-Housing_reports.htm#P6. Analysts at LMI calculated summary data for WIAs. Data are also available at <http://www.census.gov/const/www/permitsindex.html>.