

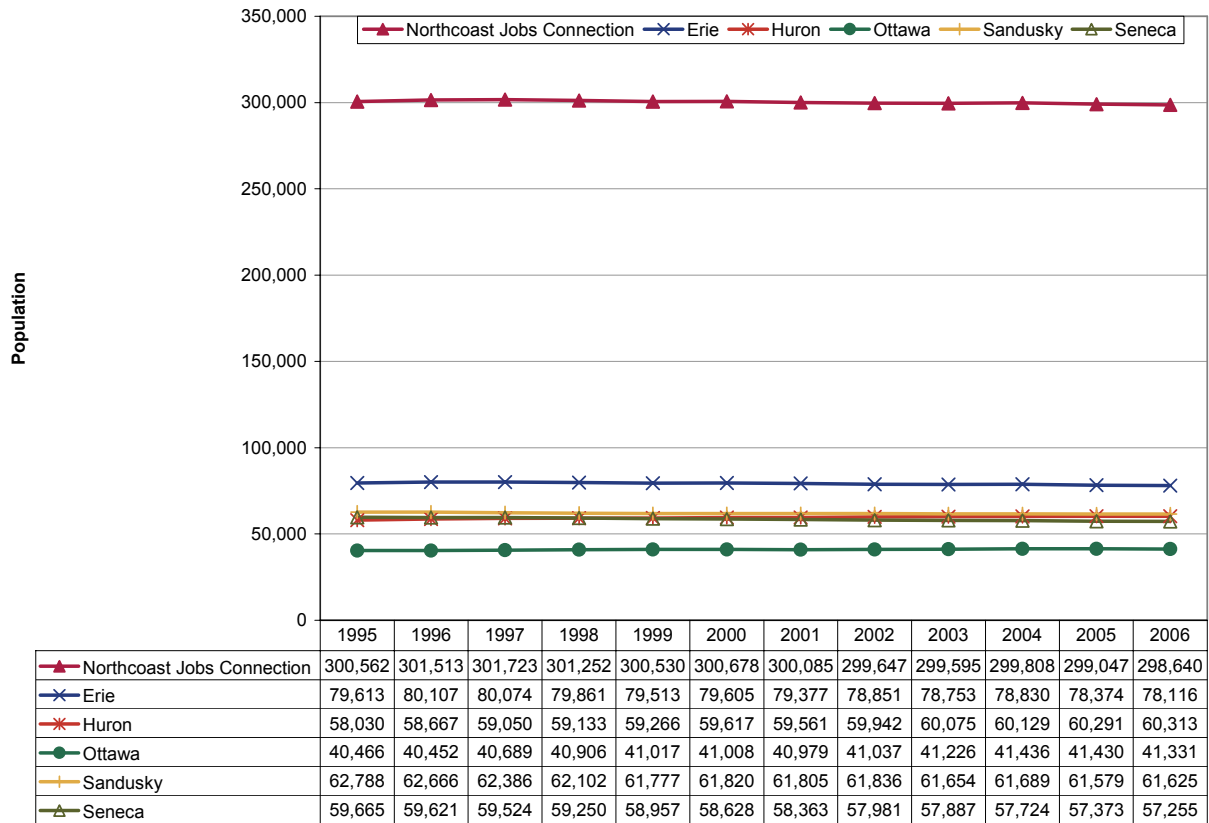
**Updates to Workforce Analysis Reports
Northcoast Jobs Connection
July 2007**

This document contains updates to the Workforce Analysis report for the Northcoast Jobs Connection, published in January 2007. This area includes Erie, Huron, Ottawa, Sandusky and Seneca Counties. For additional information, please see the Technical Notes at the end of this document.

Table of Contents

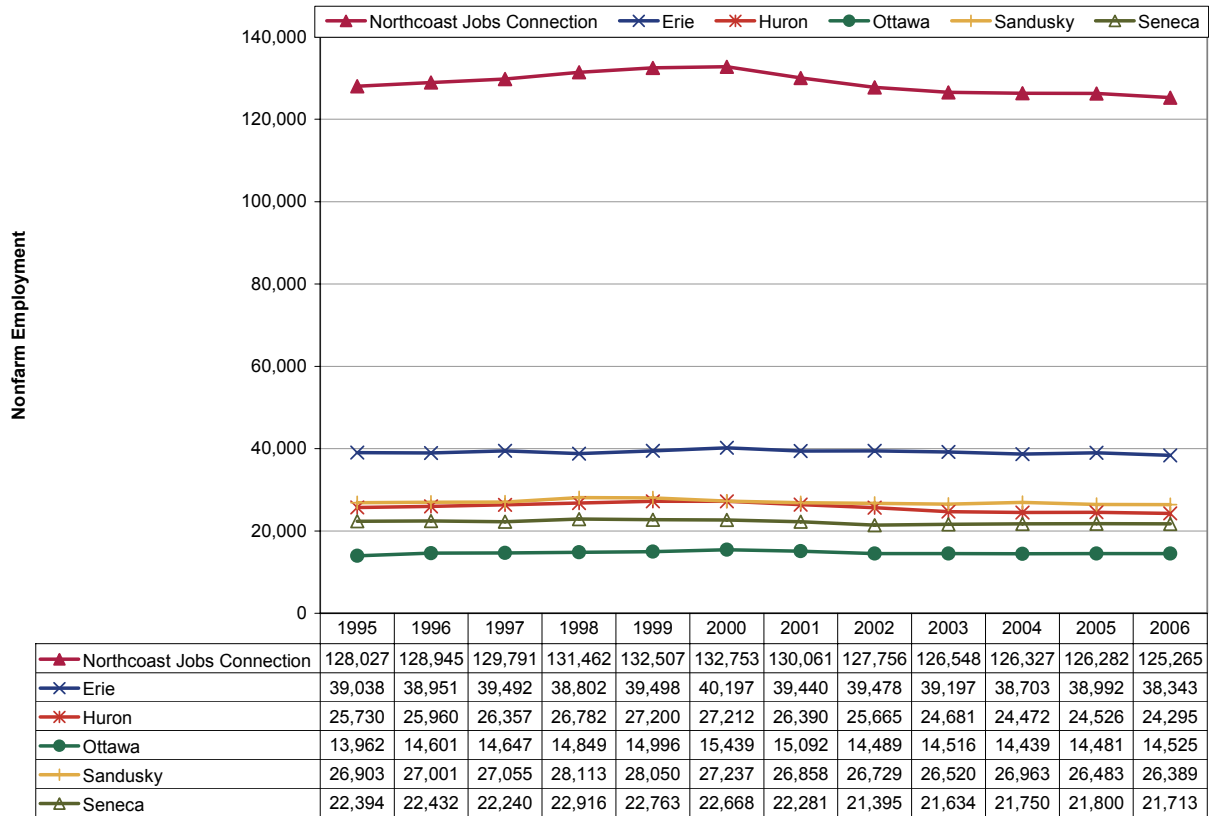
Trends Update	Update to Page
Population	3
Employment	4
Unemployment Rates	5
Per Capita Income.....	6
New Residential Building Permits	7

Population



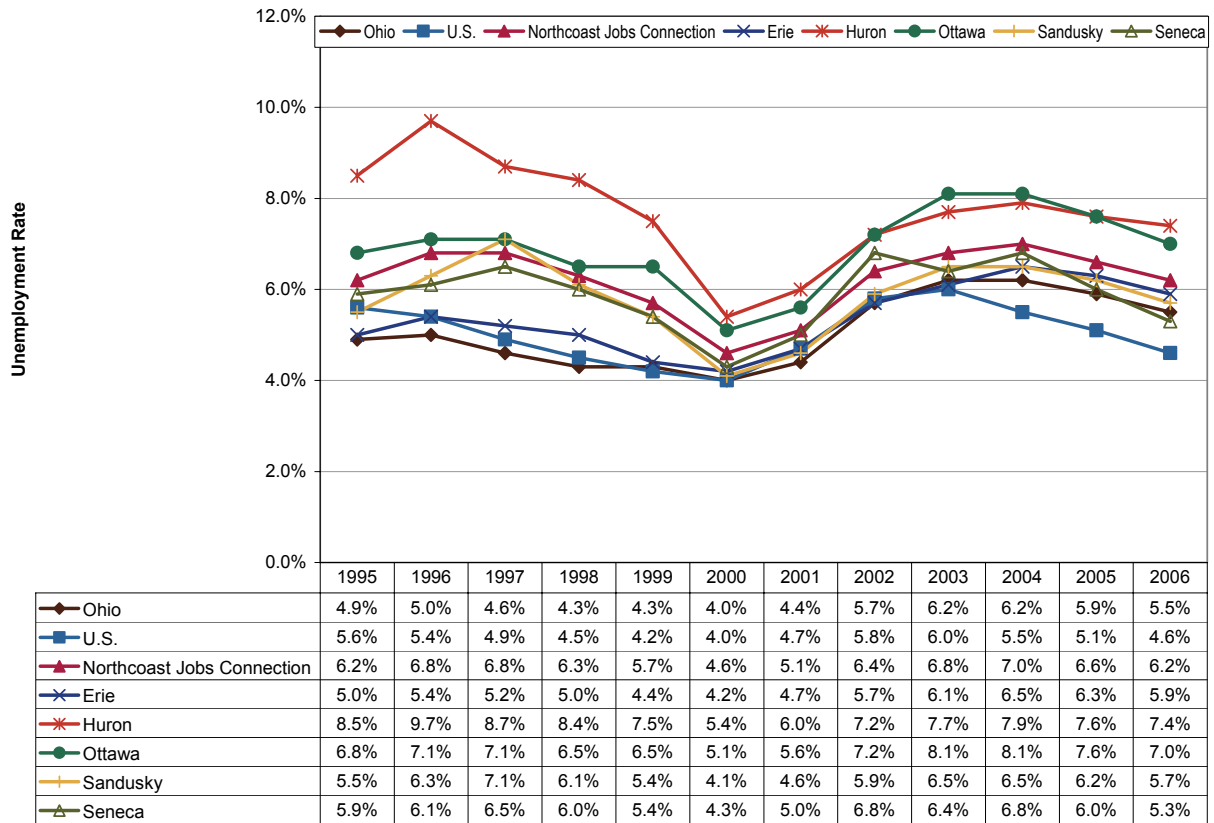
Total population in this area declined slightly to 298,600 residents from 1995 to 2006. Huron and Ottawa Counties were the only two counties to gain population during this period, growing 3.9 percent and 2.1 percent, respectively. Seneca County's population decreased 4.0 percent. Erie County—the Sandusky metropolitan area—and Sandusky County each lost residents, both down 1.9 percent from 1995. Erie County had the largest population throughout this period: 78,100 in 2006. By comparison, statewide population grew 2.5 percent during this period while national population increased by 12.4 percent.

Employment



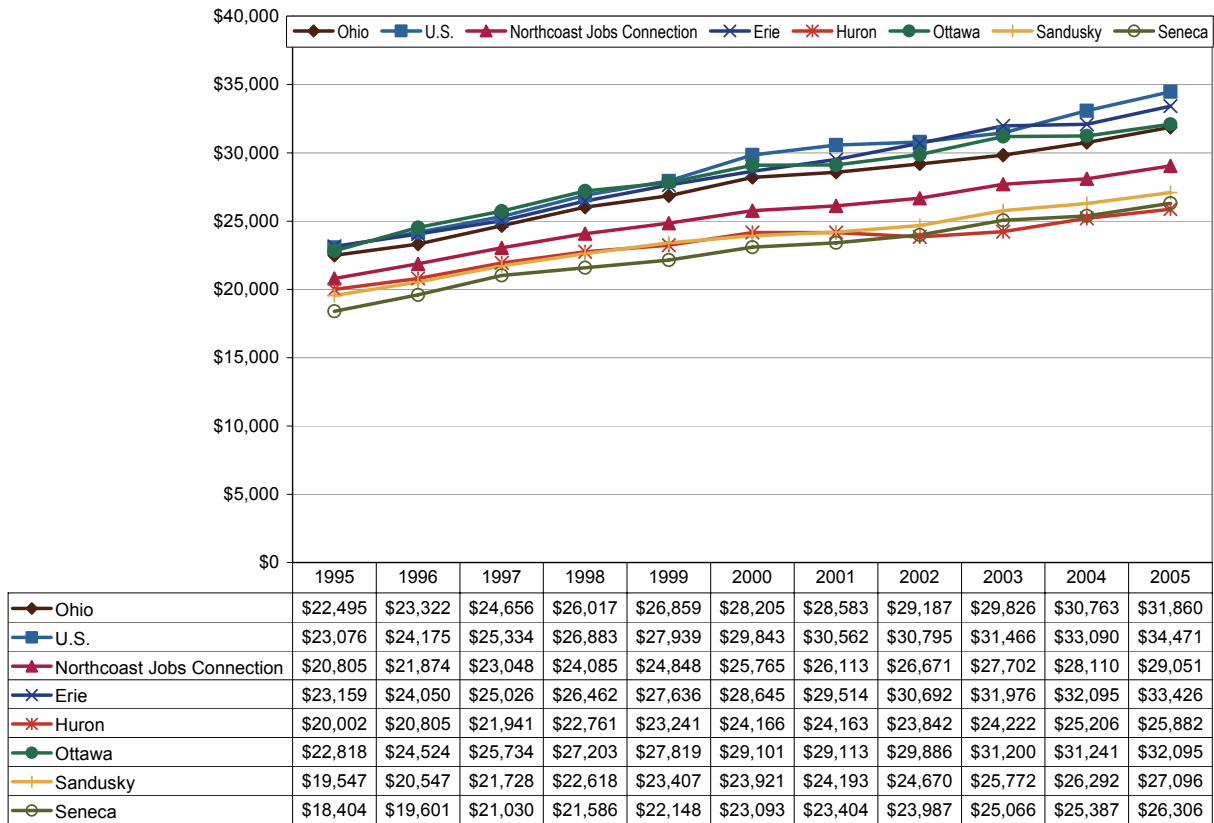
Although the Northcoast area enjoyed significant job growth during the record economic expansion of the late 1990s, this region shed nearly 7,500 jobs (-5.6%) from 2000 to 2006. Huron County had the greatest employment losses during this period: about 2,900 jobs or 10.7 percent. For comparison, Ohio nonfarm employment fell 3.5 percent from 2000 to 2006 after slight gains since 2003.

Unemployment Rates



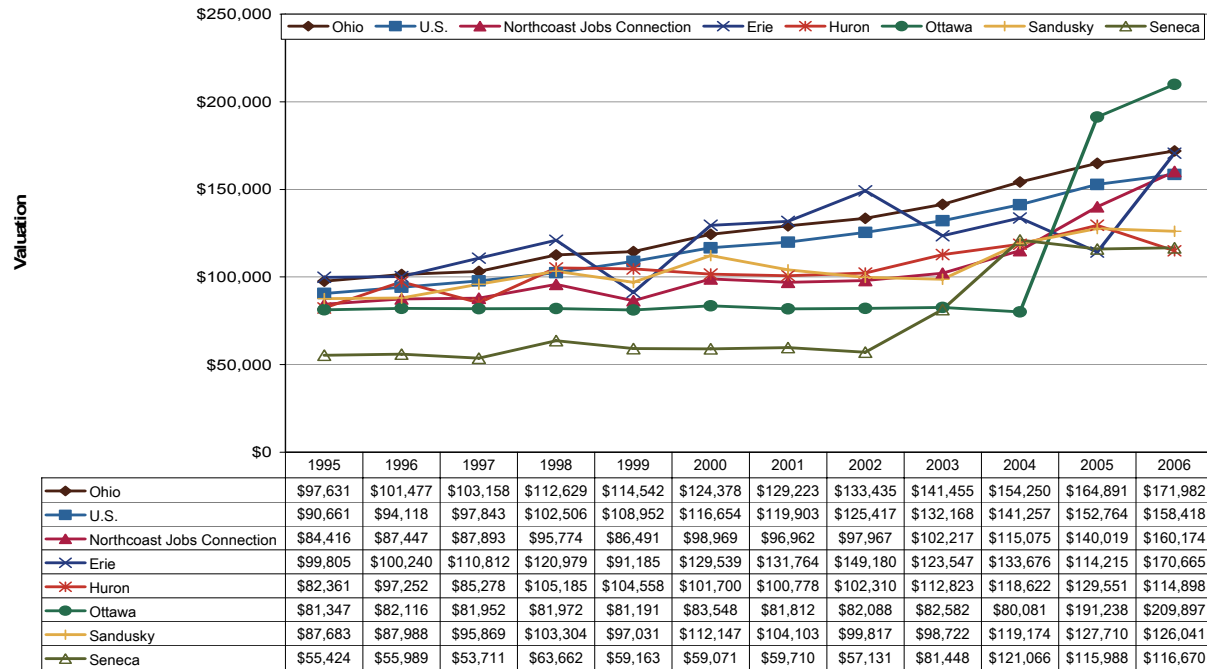
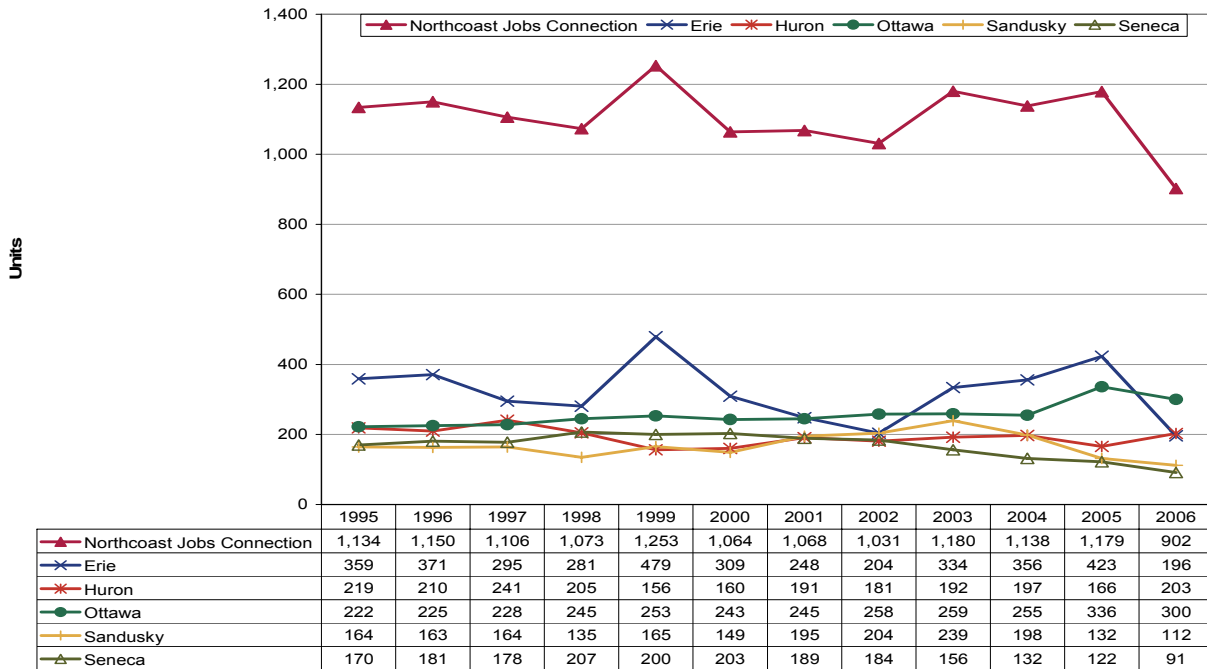
Area unemployment in 2006 was 6.2 percent, a decline of 0.8 percentage points from the last peak in 2004, but significantly higher than the statewide rate of 5.5 percent that year. Huron County generally had the area's highest unemployment rates from 1995 to 2006, reaching 7.4 percent by the end of this period. The Ohio and U.S. unemployment rates fell 0.7 and 1.4 percentage points, respectively, from their peaks in 2003.

Per Capita Income



Per capita income for the region was \$29,051 in 2005, having grown at a 3.4 percent average annual compound rate since 1995. Erie and Ottawa Counties had higher per capita income levels than other counties in the region, in part because urban areas tend to have higher incomes than rural areas, and these two counties are both parts of metropolitan areas (Sandusky and Toledo, respectively). Erie and Seneca Counties had the area's highest income growth rates from 1995 to 2005—annual compound growth rates of 3.7 and 3.6 percent, respectively. State and national growth rates were 3.5 percent and 4.1 percent, respectively.

Residential Building Permits



There were 902 residential building permits granted in this region in 2006, down sharply from 2005. Nationwide, there was also a significant drop in the number of residential building permits granted from 2005 to 2006. Erie County, the Sandusky metropolitan area, generally had the area's highest average valuations. The spike in Ottawa County's valuations in 2005 and 2006 was due mostly to a large number of more highly-valued single-family units being built.

Technical Notes

For a map of Ohio's Workforce Investment system, please visit <http://lmi.state.oh.us/maps/MapofOneStops.htm>.

All population figures are annual estimates by the U.S. Census Bureau, published on the Internet as of May 2007. Analysts at the Ohio Bureau of Labor Market Information (LMI) summed county population to produce totals for local regions. Please visit <http://www.census.gov/popest/estimates.php> for additional information.

Employment figures are from the Quarterly Census of Employment and Wages by the U.S. Bureau of Labor Statistics (BLS) and LMI, published on the Internet in 2007. 2006 figures are based on preliminary quarterly data posted on the Labor Market Info Classic site and subject to revision this fall. Federal government employment, which is not covered by Ohio's unemployment compensation system, had inadvertently been omitted from the totals for 1995-1998 in the original report. That has been corrected in this update. In most counties the difference was negligible. Please visit http://lmi.state.oh.us/cep/CEP_NAICS.htm#Publications for additional statistics.

All unemployment figures are annualized, non-seasonally adjusted estimates by the Local Area Unemployment Statistics (LAUS) Section of LMI, published on the Internet as of May 2007. For additional statistics, please visit <http://lmi.state.oh.us/ASP/LAUS/vbLaus.htm>.

Per capita income figures for counties are in nominal dollars (not adjusted for inflation) and were published April 26, 2007 by the U.S. Bureau of Economic Analysis (BEA). Analysts at LMI calculated income figures for WIAs. For more information, please visit <http://www.bea.gov/regional/index.htm#state>.

Construction data are reported by the U.S. Census Bureau and are available through the Ohio Department of Development, Office of Strategic Research at http://www.odod.state.oh.us/research/Reports_in_population_and_housing-Housing_reports.htm#P6. Analysts at LMI calculated summary data for WIAs. Data are also available at <http://www.census.gov/const/www/permitsindex.html>.