

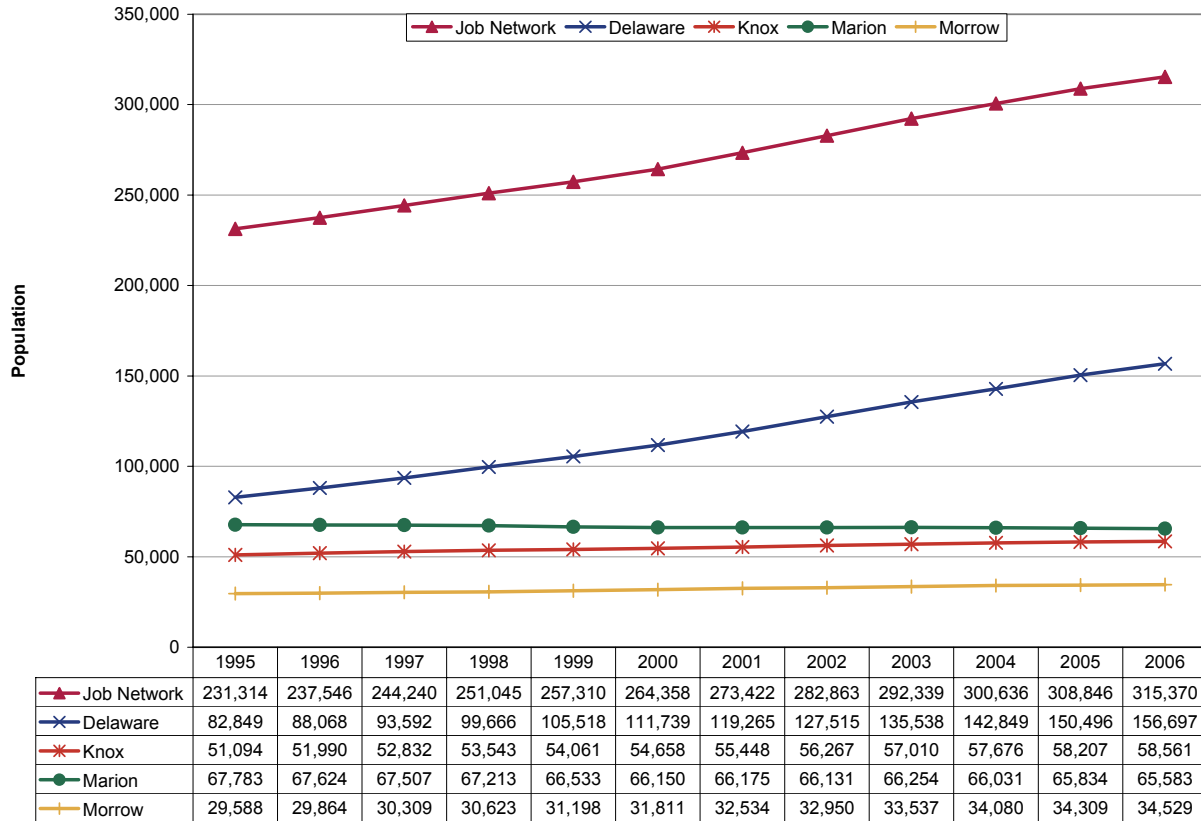
Updates to Workforce Analysis Reports Job Network July 2007

This document contains updates to the Workforce Analysis report for the Job Network area, published in January 2007. This area includes Delaware, Knox, Marion and Morrow Counties. For additional information, please see the Technical Notes at the end of this document.

Table of Contents

Trends Update	Update to Page
Population	3
Employment	4
Unemployment Rates	5
Per Capita Income.....	6
New Residential Building Permits	7

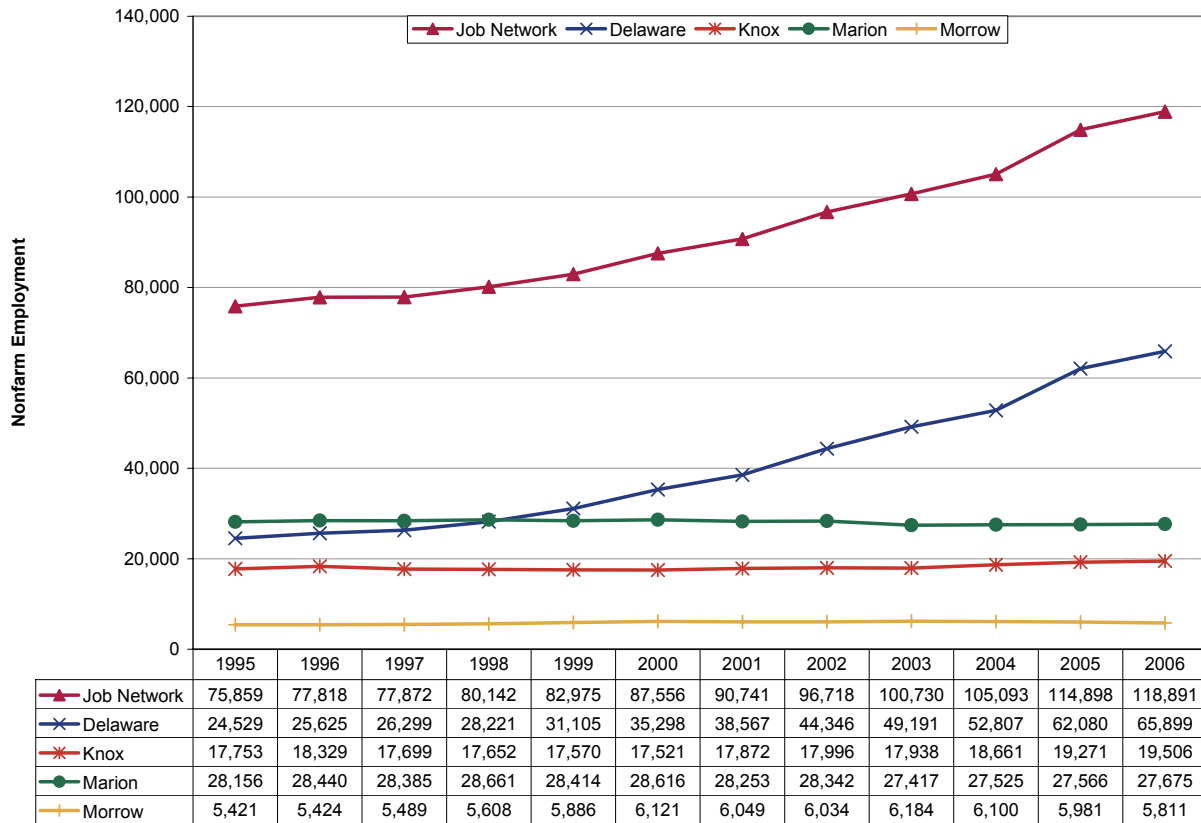
Population



Population in this area increased by more than one third from 1995 to 2006 to 315,400 residents. Much of this population growth was driven by growth in Delaware County, where population nearly doubled. Between 2000 and 2006, Delaware County was the 13th fastest growing county in America.¹ Knox and Morrow Counties also had strong population growth during this period, increasing 14.6 and 16.7 percent, respectively. Marion County was the only county to lose residents during this period: about 3.2 percent. Delaware and Morrow Counties are both part of the Columbus metropolitan area. By comparison, statewide population grew 2.5 percent during this period while national population increased by 12.4 percent.

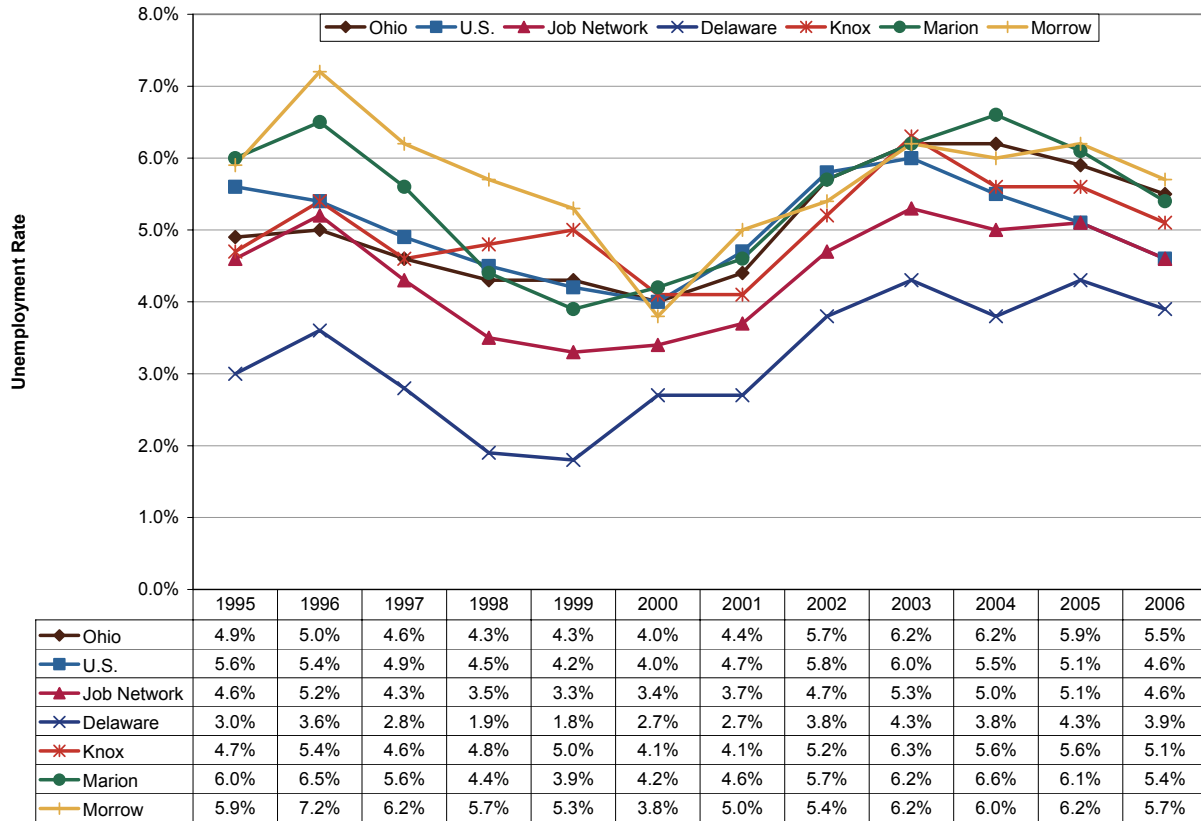
¹ U.S. Census Bureau (2007). *100 Fastest Growing Counties*. Retrieved June 15, 2007, from <http://www.census.gov/popest/counties/CO-EST2006-08.html>.

Employment



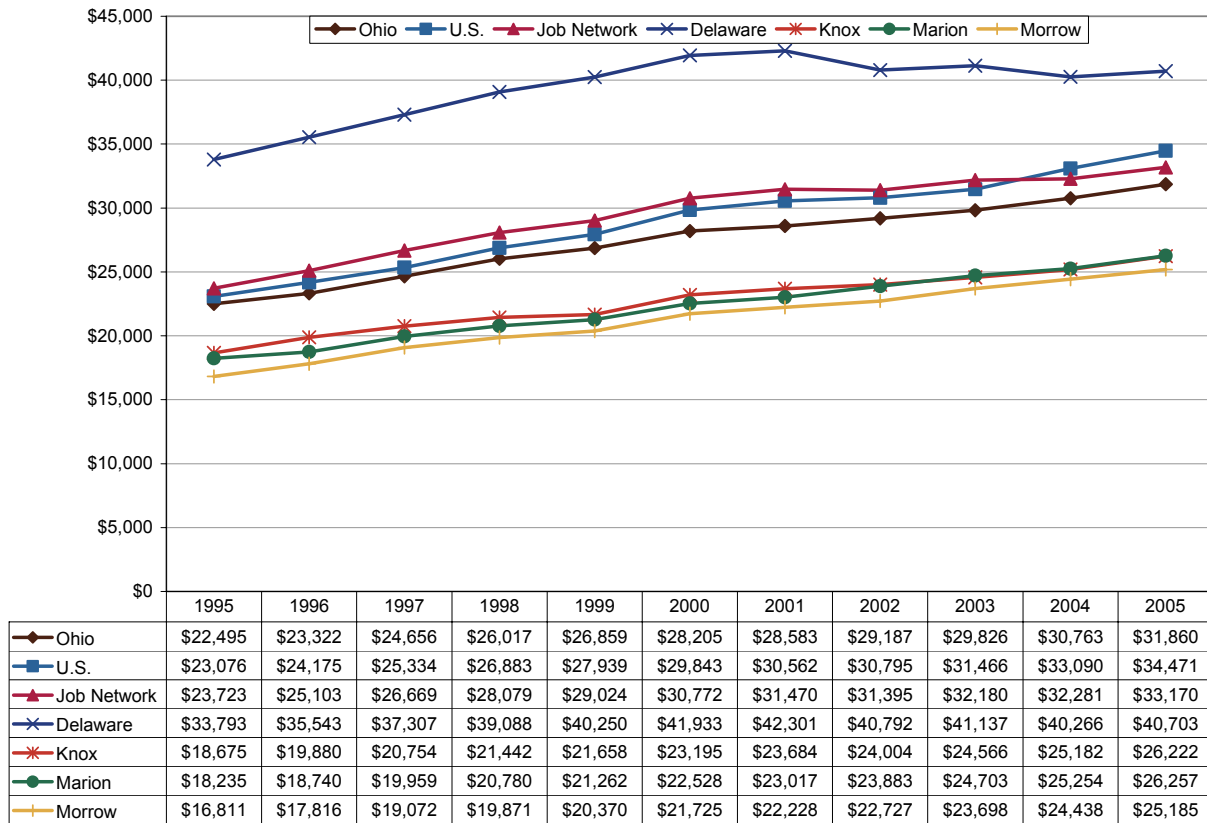
Like population, employment growth in the Job Network area has been especially strong in the last ten years. Delaware County added over 43,000 net jobs between 1995 and 2006. Marion County was the only county to have a net loss of jobs during this period: about 1.7 percent. In total, employment in the Job Network grew 56.7 percent. By comparison, Ohio nonfarm employment grew 4.0 percent while U.S. employment increased by 16.1 percent. Unlike the State of Ohio which is still struggling to recover jobs lost since the last economic downturn, this region stands apart for employment levels that were negligibly impacted by the 2001 recession.

Unemployment Rates



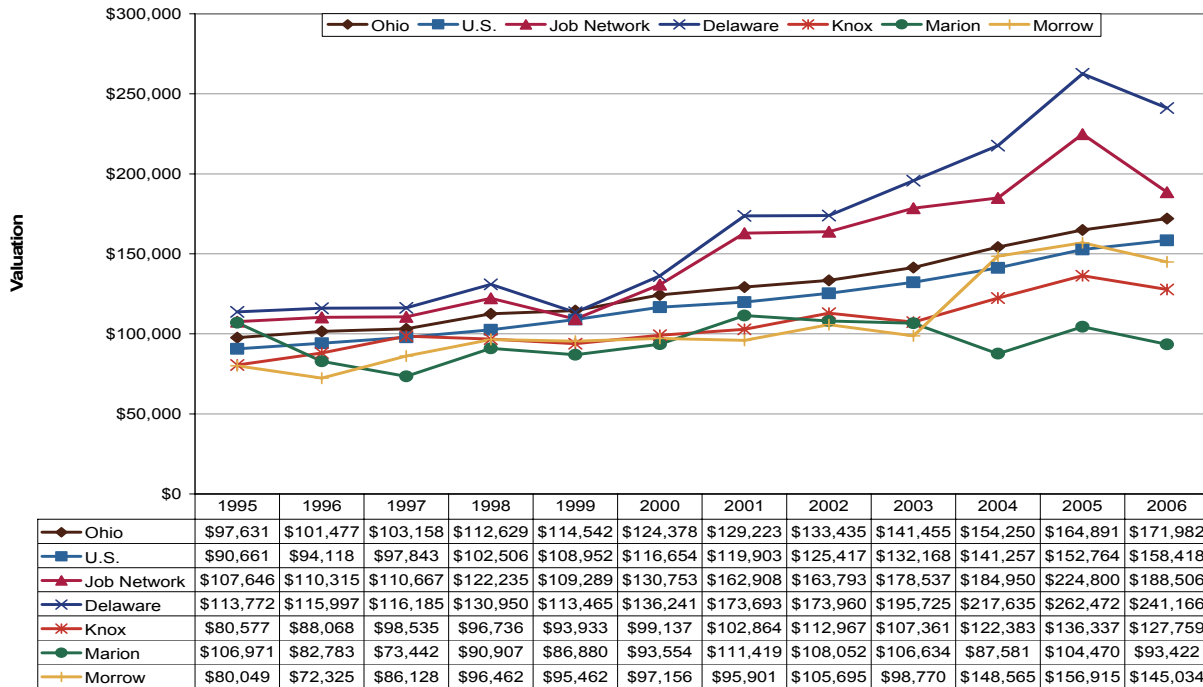
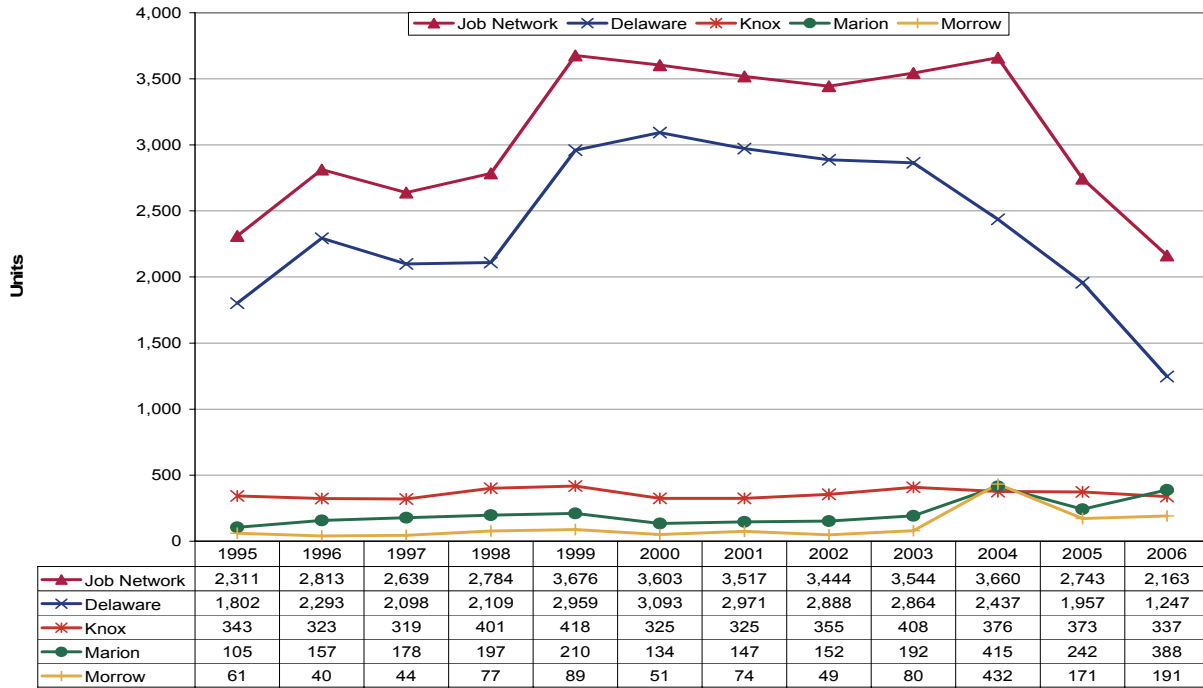
In 2006, the unemployment rate in this One-Stop system was 4.6 percent, well below the statewide rate and down 0.7 percentage points from the last peak in 2003. Delaware County—part of the Columbus metropolitan area—had the area's lowest unemployment rate between 1995 and 2006: only 3.9 percent at the end of this period. Morrow County generally had the highest unemployment rates throughout this period: 5.7 percent in 2006—just slightly above the state rate.

Per Capita Income



Average per capita income for this region was \$33,170 in 2005, having grown an average 3.4 percent per year since 1995. Throughout this period, Delaware County—part of the Columbus metropolitan area—had significantly higher income levels than other counties in this region as well as the United States. Urban areas such as this tend to have higher income levels than rural areas, and Delaware County has enjoyed strong growth in recent years. However, per capita income in Delaware County actually declined in nominal terms from 2001 and 2004, likely the result of its rapidly-growing population. The other three counties in this area had per capita incomes near \$26,000 in 2005. For comparison, per capita income in Ohio grew 3.5 percent per year since 1995 while national per capita income increased by 4.1 percent.

Residential Building Permits



There has been a great deal of residential construction activity in Delaware County in the last decade, but that has fallen off sharply to 1,247 units in 2006. Nationwide, there was also a significant drop in the number of residential building permits granted from 2005 to 2006. The remainder of the region has stayed fairly stable. Delaware County permits have also been the area's most highly-valued units during the period.

Technical Notes

For a map of Ohio's Workforce Investment system, please visit <http://lmi.state.oh.us/maps/MapofOneStops.htm>.

All population figures are annual estimates by the U.S. Census Bureau, published on the Internet as of May 2007. Analysts at the Ohio Bureau of Labor Market Information (LMI) summed county population to produce totals for local regions. Please visit <http://www.census.gov/popest/estimates.php> for additional information.

Employment figures are from the Quarterly Census of Employment and Wages by the U.S. Bureau of Labor Statistics (BLS) and LMI, published on the Internet in 2007. 2006 figures are based on preliminary quarterly data posted on the Labor Market Info Classic site and subject to revision this fall. Federal government employment, which is not covered by Ohio's unemployment compensation system, had inadvertently been omitted from the totals for 1995-1998 in the original report. That has been corrected in this update. In most counties the difference was negligible. Please visit http://lmi.state.oh.us/cep/CEP_NAICS.htm#Publications for additional statistics.

All unemployment figures are annualized, non-seasonally adjusted estimates by the Local Area Unemployment Statistics (LAUS) Section of LMI, published on the Internet as of May 2007. For additional statistics, please visit <http://lmi.state.oh.us/ASP/LAUS/vbLaus.htm>.

Per capita income figures for counties are in nominal dollars (not adjusted for inflation) and were published April 26, 2007 by the U.S. Bureau of Economic Analysis (BEA). Analysts at LMI calculated income figures for WIAs. For more information, please visit <http://www.bea.gov/regional/index.htm#state>.

Construction data are reported by the U.S. Census Bureau and are available through the Ohio Department of Development, Office of Strategic Research at http://www.odod.state.oh.us/research/Reports_in_population_and_housing-Housing_reports.htm#P6. Analysts at LMI calculated summary data for WIAs. Data are also available at <http://www.census.gov/const/www/permitsindex.html>.