

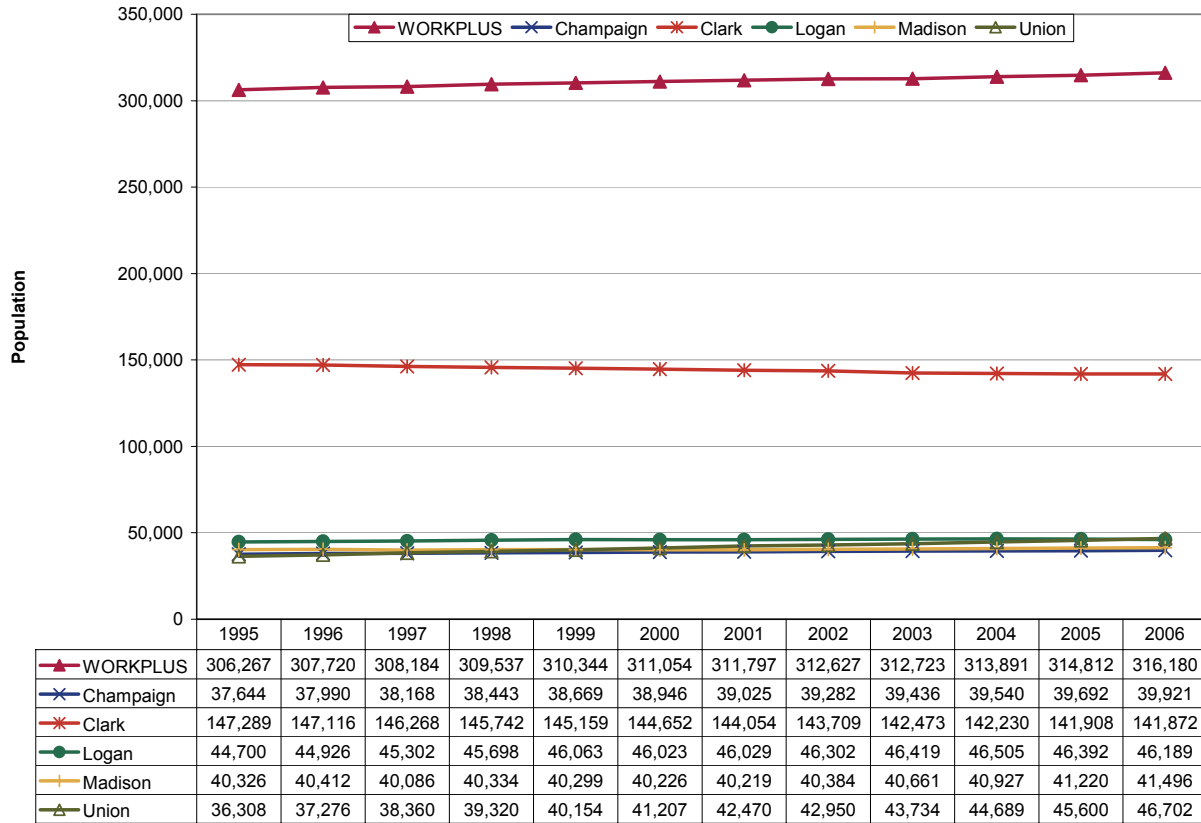
Updates to Workforce Analysis Reports
WORKPLUS
July 2007

This document contains updates to the Workforce Analysis report for *WORKPLUS*, published in January 2007. This area includes Champaign, Clark, Logan, Madison and Union Counties. For additional information, please see the Technical Notes at the end of this document.

Table of Contents

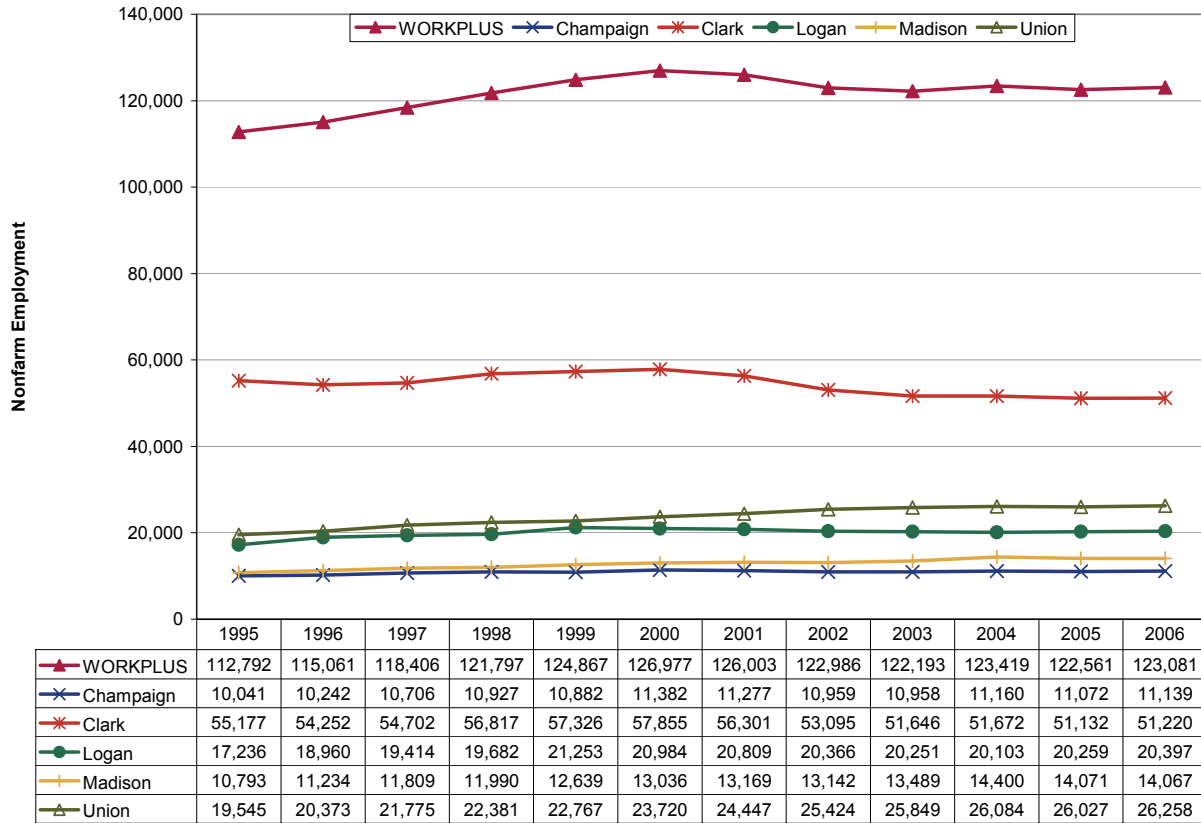
Trends Update	Update to Page
Population	3
Employment	4
Unemployment Rates	5
Per Capita Income.....	6
New Residential Building Permits	7

Population



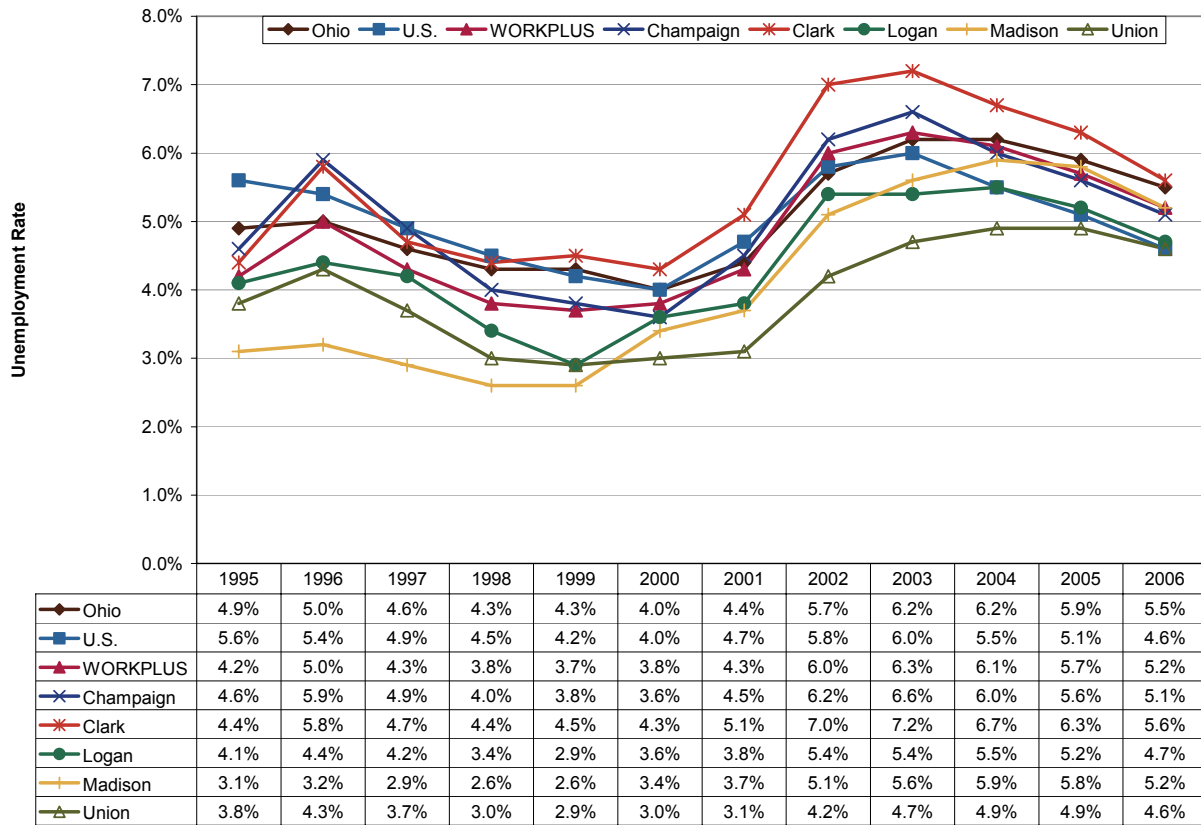
This area's population increased 3.2 percent to 316,200 residents from 1995 to 2006. Union County—part of the Columbus metropolitan area—had the strongest population growth in this region, growing 28.6 percent during this period to 46,700. Clark County—which is the Springfield metropolitan area—though the largest county (142,000 residents in 2006), was the only one in the area to lose population: -3.7 percent. By comparison, statewide population grew 2.5 percent during this period while national population increased by 12.4 percent.

Employment



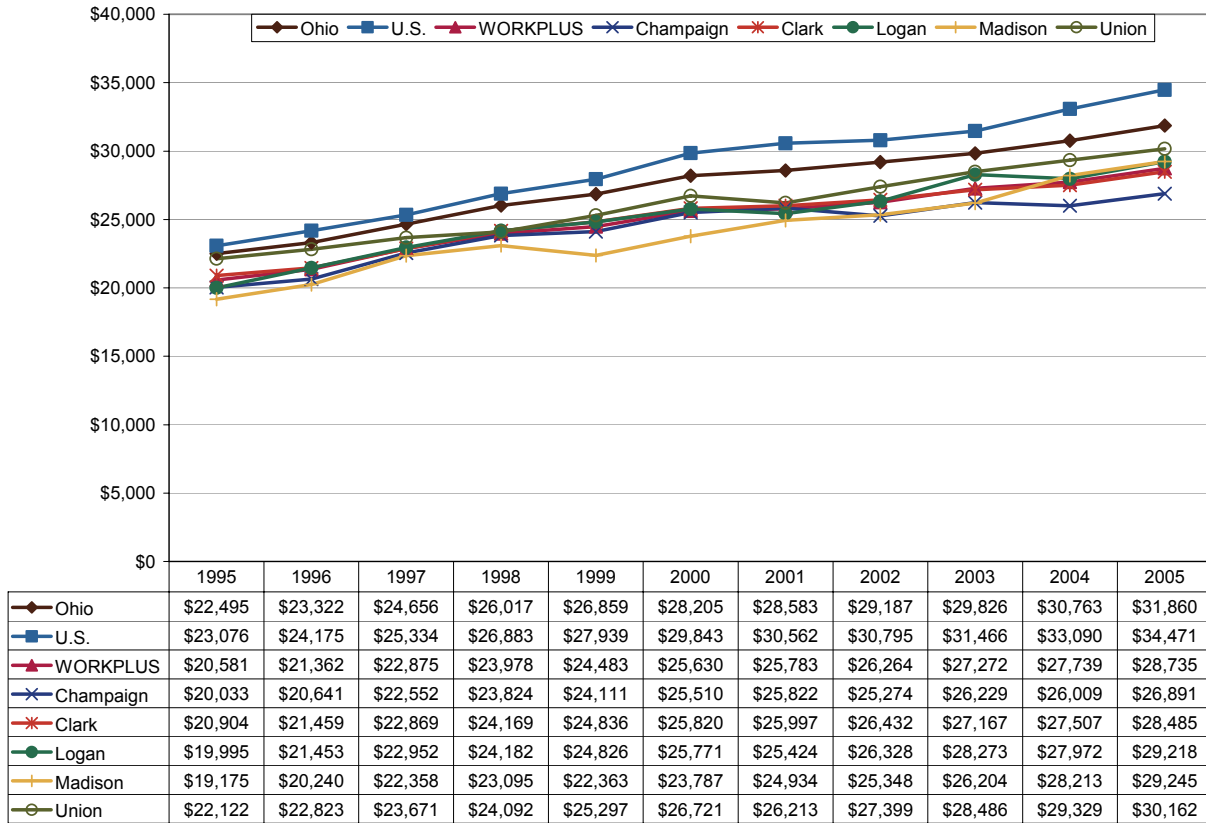
There were 123,000 workers in the WORKPLUS region in 2006—9.1 percent more than in 1995, but 3.1 percent lower than the peak in 2000. Madison and Union Counties were the only counties to have fully recovered all jobs lost following the 2001 recession with net growth rates of 7.9 percent and 10.7 percent, respectively. The other three counties, while they have not yet fully recovered, did add jobs in 2006. By comparison, Ohio nonfarm employment fell 3.5 percent since 2000 after slight gains from 2003.

Unemployment Rates



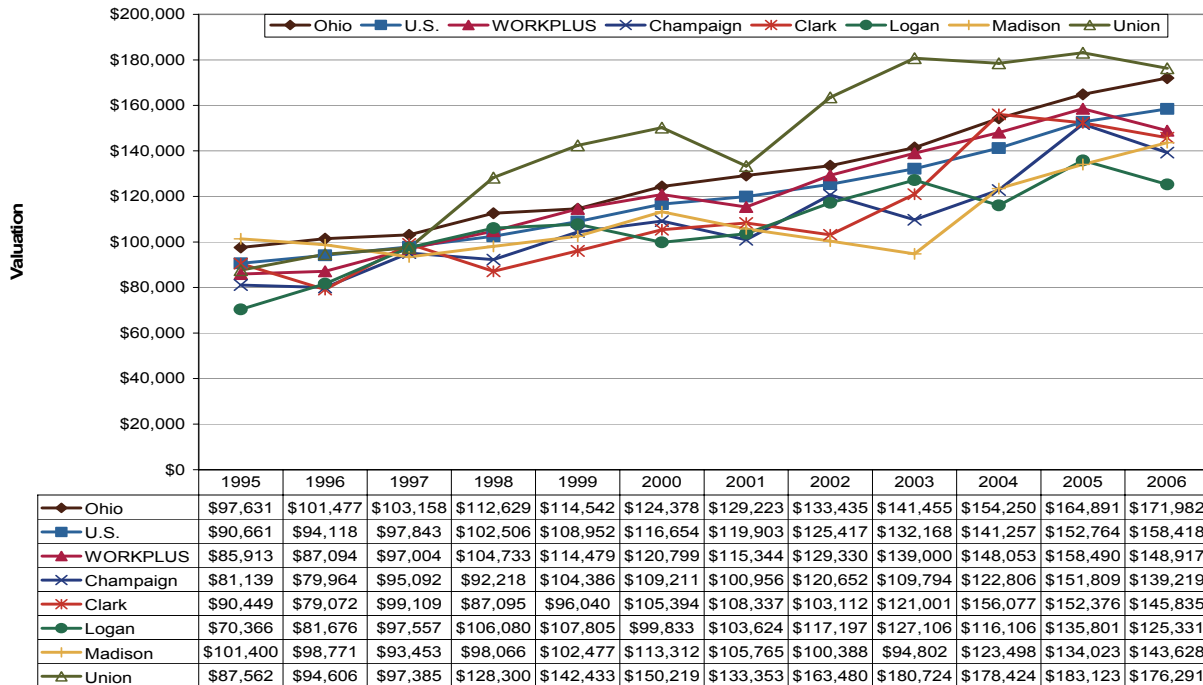
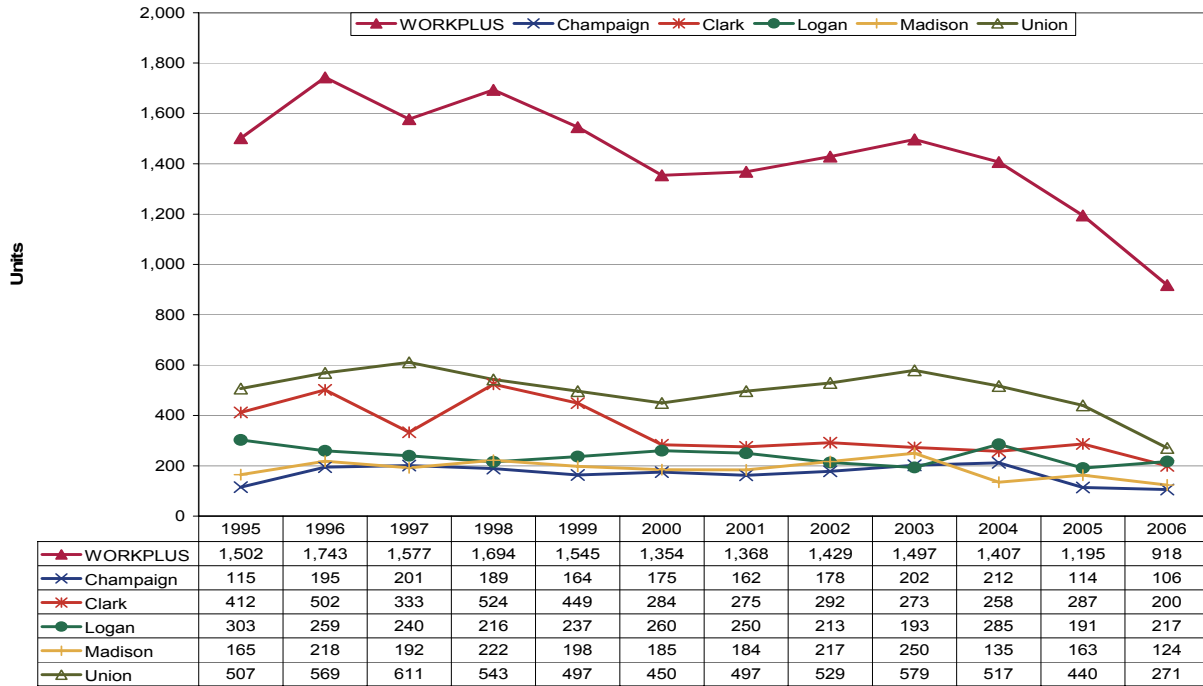
Area unemployment in 2006 was 5.2 percent, a decline of 1.1 percentage points from the peak in 2003. Clark County has generally had the region's highest unemployment rates between 1995 and 2006: 5.6 percent by the end of this period. Since 2000, Union County has generally had the area's lowest unemployment rates, 4.6 percent in 2006. For comparison, the statewide unemployment rate that year was 5.5 percent.

Per Capita Income



Per capita income in 2005 was \$28,735, having increased at an average annual compound rate of 3.4 percent from 1995. Per capita income levels between the five counties in this area were highly similar throughout this period, though Madison County had the fastest growth rate: 4.3 percent per year. Union County generally had the area's highest per capita incomes during this period—\$30,162 in 2005. State and national growth rates were 3.5 percent and 4.1 percent, respectively.

Residential Building Permits



Total residential construction activity has fallen significantly from 2003 both in this region and statewide, indicating a cooling housing market. Union County has had the most residential construction activity from 1995 to 2006: 271 units in 2006. It also has generally had the highest-valued units during that time. Nationwide, there was a significant drop in the number of residential building permits granted from 2005 to 2006.

Technical Notes

For a map of Ohio's Workforce Investment system, please visit <http://lmi.state.oh.us/maps/MapofOneStops.htm>.

All population figures are annual estimates by the U.S. Census Bureau, published on the Internet as of May 2007. Analysts at the Ohio Bureau of Labor Market Information (LMI) summed county population to produce totals for local regions. Please visit <http://www.census.gov/popest/estimates.php> for additional information.

Employment figures are from the Quarterly Census of Employment and Wages by the U.S. Bureau of Labor Statistics (BLS) and LMI, published on the Internet in 2007. 2006 figures are based on preliminary quarterly data posted on the Labor Market Info Classic site and subject to revision this fall. Federal government employment, which is not covered by Ohio's unemployment compensation system, had inadvertently been omitted from the totals for 1995-1998 in the original report. That has been corrected in this update. In most counties the difference was negligible. Please visit http://lmi.state.oh.us/cep/CEP_NAICS.htm#Publications for additional statistics.

All unemployment figures are annualized, non-seasonally adjusted estimates by the Local Area Unemployment Statistics (LAUS) Section of LMI, published on the Internet as of May 2007. For additional statistics, please visit <http://lmi.state.oh.us/ASP/LAUS/vbLaus.htm>.

Per capita income figures for counties are in nominal dollars (not adjusted for inflation) and were published April 26, 2007 by the U.S. Bureau of Economic Analysis (BEA). Analysts at LMI calculated income figures for WIAs. For more information, please visit <http://www.bea.gov/regional/index.htm#state>.

Construction data are reported by the U.S. Census Bureau and are available through the Ohio Department of Development, Office of Strategic Research at http://www.odod.state.oh.us/research/Reports_in_population_and_housing-Housing_reports.htm#P6. Analysts at LMI calculated summary data for WIAs. Data are also available at <http://www.census.gov/const/www/permitsindex.html>.