

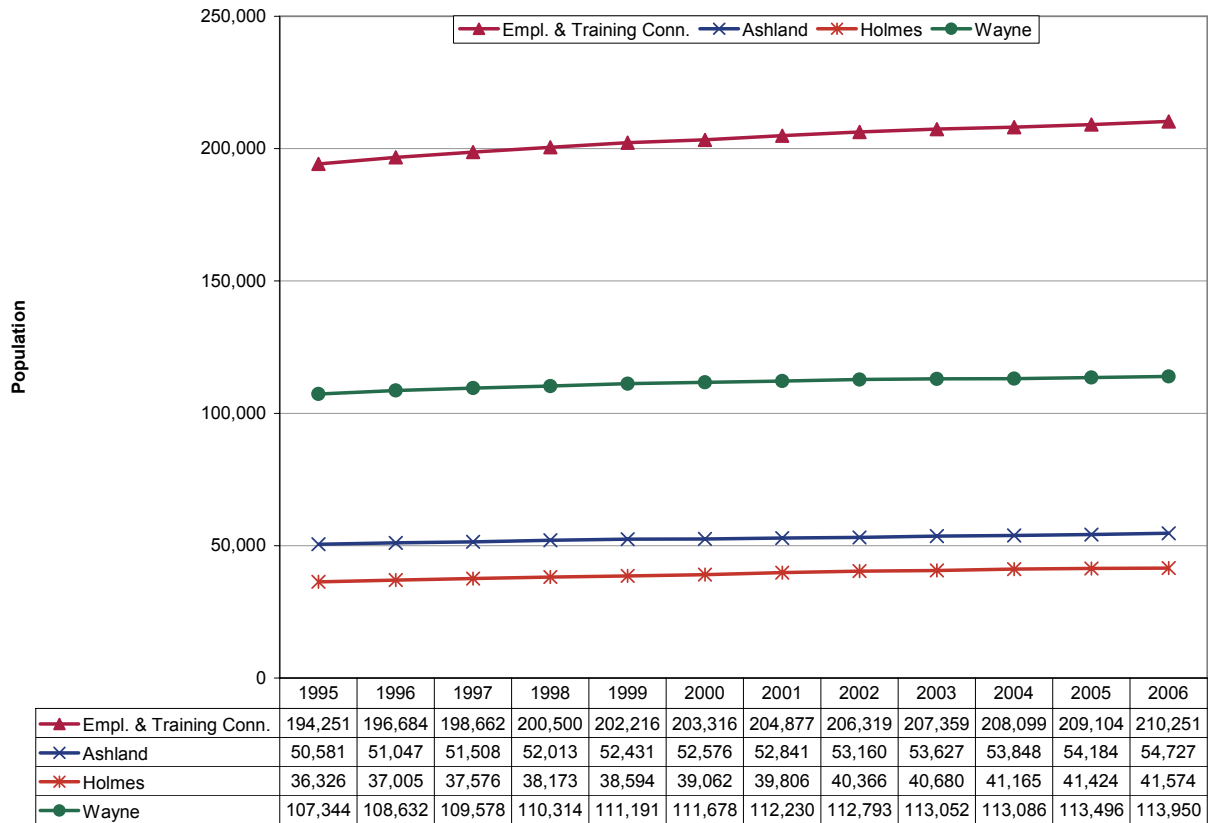
# **Updates to Workforce Analysis Reports Employment & Training Connection July 2007**

This document contains updates to the Workforce Analysis report for the Employment & Training Connection, published in January 2007. This area includes Ashland, Holmes and Wayne Counties. For additional information, please see the Technical Notes at the end of this document.

## **Table of Contents**

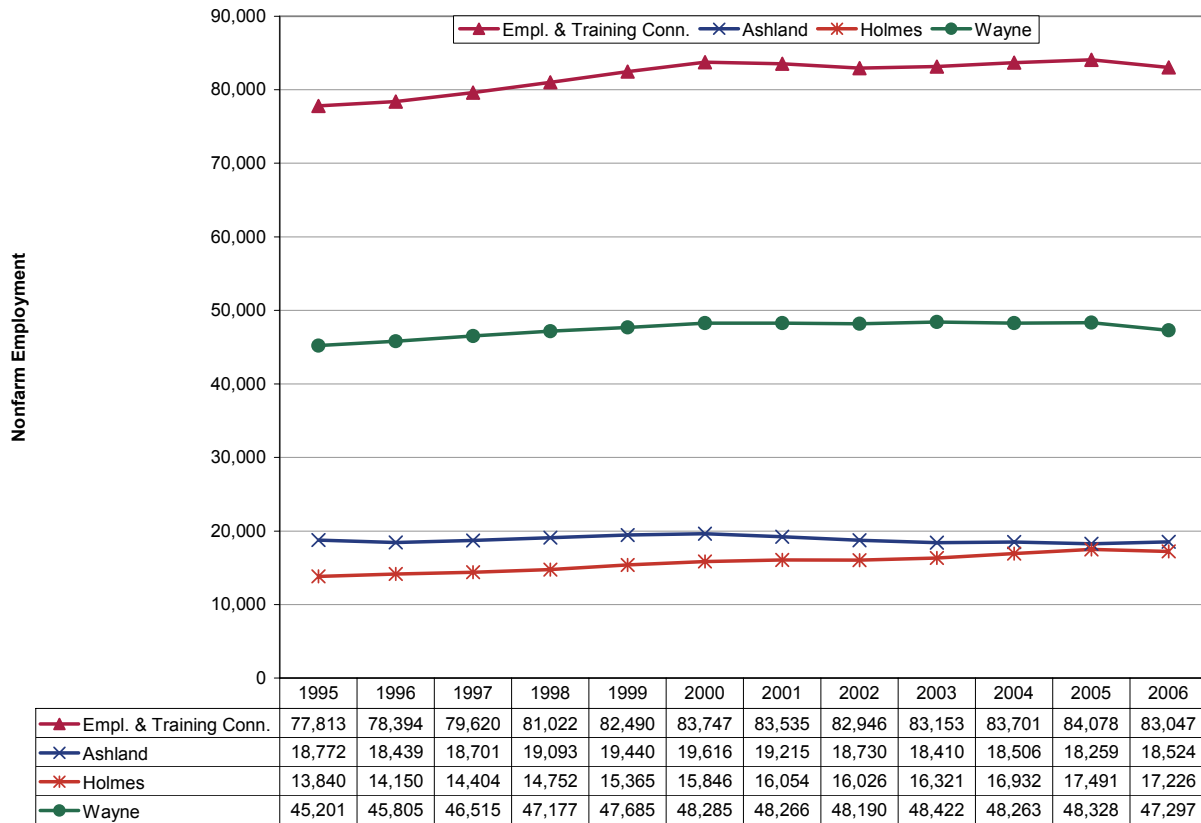
<b>Trends Update</b>	<b>Update to Page</b>
Population .....	3
Employment .....	4
Unemployment Rates .....	5
Per Capita Income.....	6
New Residential Building Permits .....	7

## Population



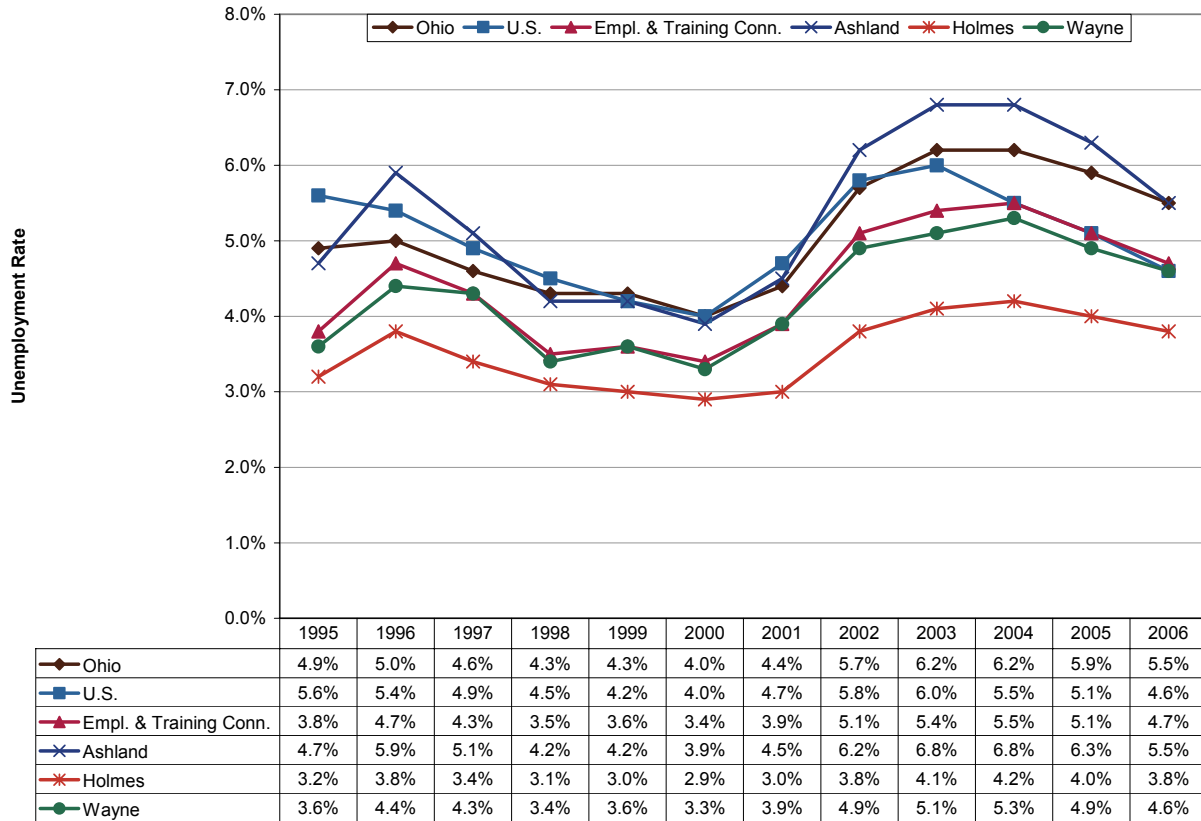
Population in the Employment & Training Connection region was 210,300 in 2006, an increase of 8.2 percent from 1995. Holmes County had the area's largest percentage increase during this period: 14.4 percent to about 41,600. Wayne County had the largest population in the area, reaching nearly 114,000 residents by 2006. Each of these three counties gained residents over this time frame. For comparison, statewide population grew 2.5 percent during this period while national population increased by 12.4 percent.

## Employment



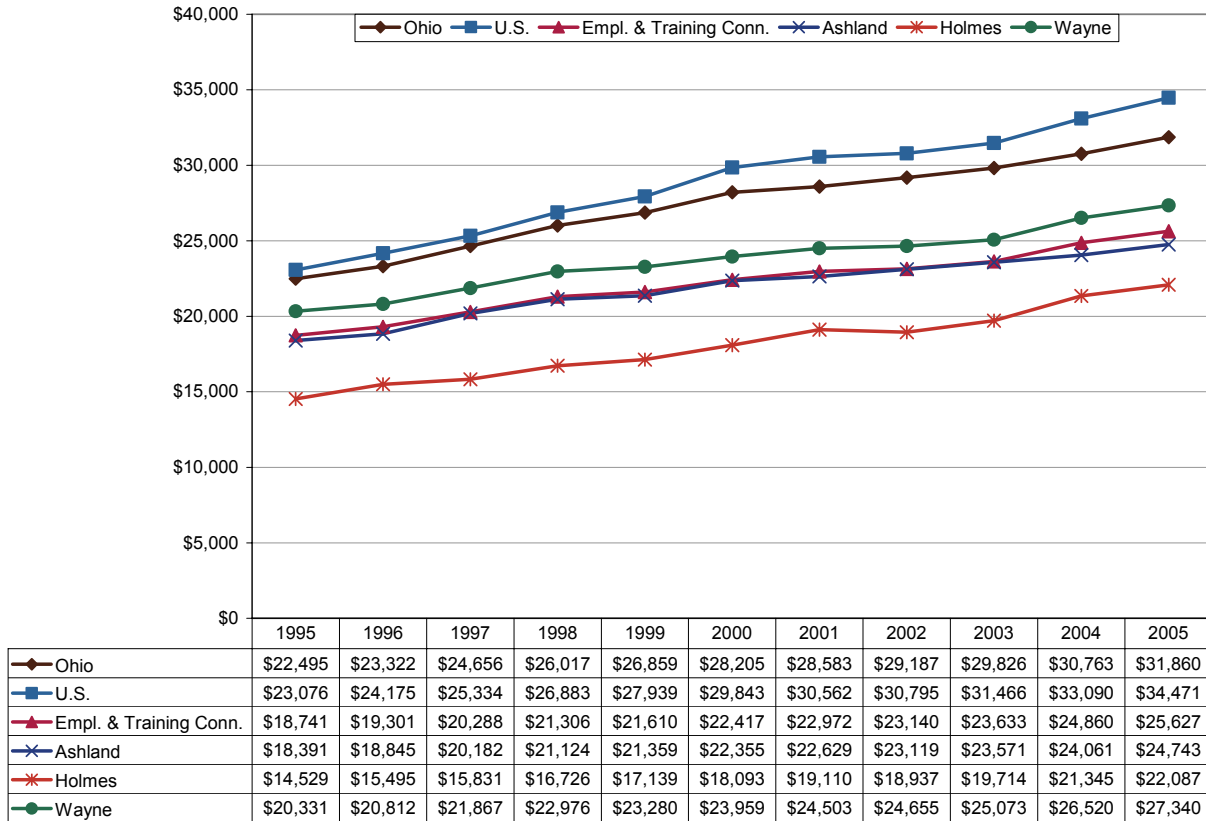
After experiencing strong job growth during the record economic expansion of the late 1990s, total nonfarm employment in this region declined 0.8 percent from 2000 to 2006. Ashland and Wayne Counties both have sustained job losses since 2000 of 5.6 percent and 2.0 percent, respectively. Employment in Holmes County continues to climb, growing 8.7 percent during this period. For comparison, employment in Ohio fell 3.5 percent after posting slight gains since 2003.

## Unemployment Rates



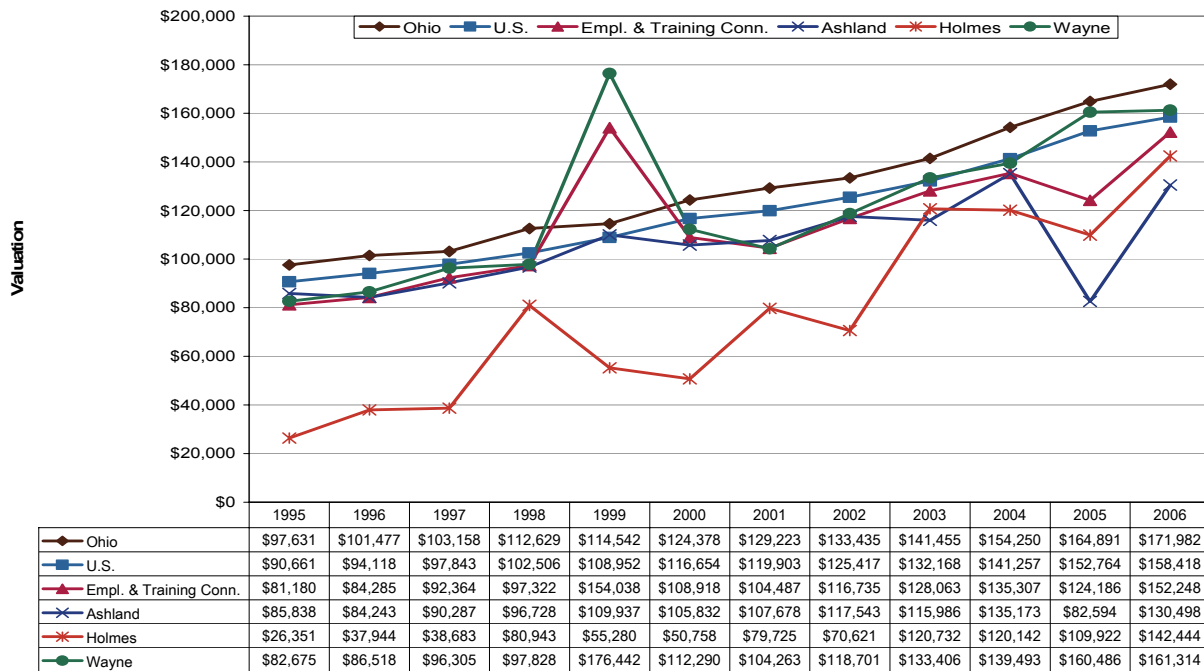
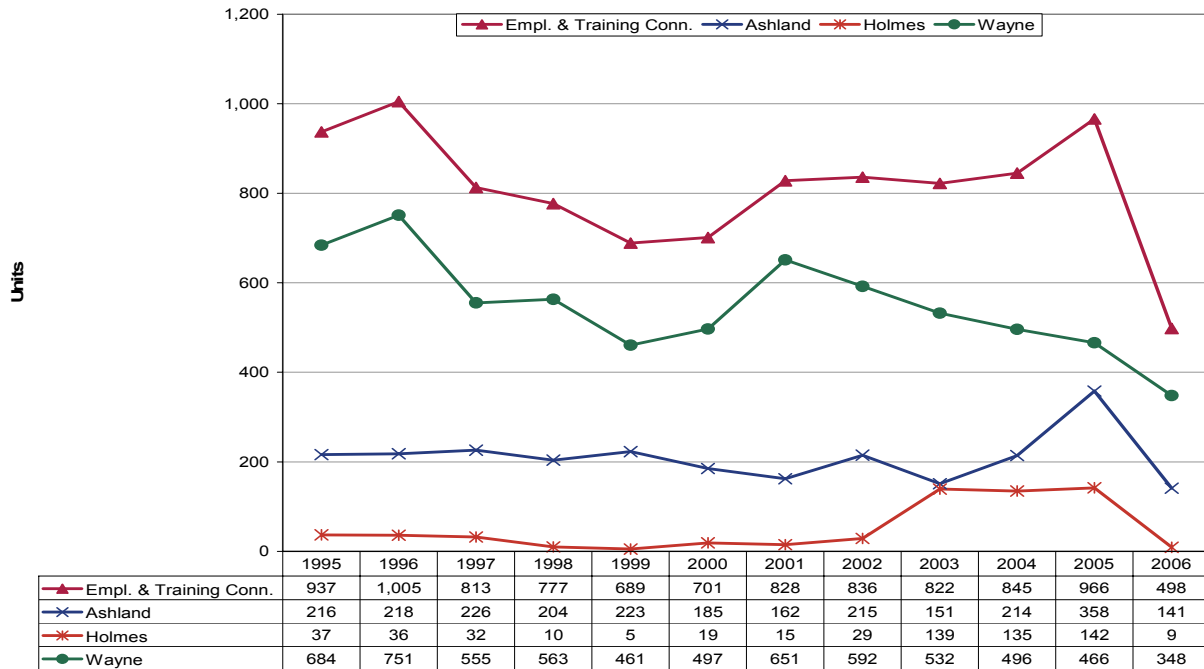
The local unemployment rate in 2006 was 4.7 percent, much lower than the statewide rate and a decline of 0.8 percentage points from the peak in 2004. From 1995 to 2006, Ashland County had the region's highest unemployment rate (5.5% in 2006) with rates very similar to the statewide numbers. Holmes County had the lowest rate at 3.8 percent in 2006. The Ohio and U.S. unemployment rates fell 0.7 and 1.4 percentage points from their peaks in 2003, respectively.

## Per Capita Income



Per capita income in 2005 was \$25,627, an annual compound increase of 3.2 percent from 1995. Holmes County, being a highly rural area, had the region's lowest per capita income levels throughout the period of analysis, but also the fastest rate of growth: 4.3 percent per year. Wayne County had the region's highest per capita income levels, reaching \$27,340 by 2005. State and national growth rates were 3.5 percent and 4.1 percent, respectively.

## Residential Building Permits



Wayne County has had the most residential construction activity in the region from 1995 to 2006 along with the highest-valued permits: an average valuation of \$161,314 in 2006. The total number of new residential building permits fell in 2006 in every county. Nationwide and in Ohio, there was also a significant drop in the number of residential building permits granted from 2005 to 2006.

## Technical Notes

For a map of Ohio's Workforce Investment system, please visit <http://lmi.state.oh.us/maps/MapofOneStops.htm>.

All population figures are annual estimates by the U.S. Census Bureau, published on the Internet as of May 2007. Analysts at the Ohio Bureau of Labor Market Information (LMI) summed county population to produce totals for local regions. Please visit <http://www.census.gov/popest/estimates.php> for additional information.

Employment figures are from the Quarterly Census of Employment and Wages by the U.S. Bureau of Labor Statistics (BLS) and LMI, published on the Internet in 2007. 2006 figures are based on preliminary quarterly data posted on the Labor Market Info Classic site and subject to revision this fall. Federal government employment, which is not covered by Ohio's unemployment compensation system, had inadvertently been omitted from the totals for 1995-1998 in the original report. That has been corrected in this update. In most counties the difference was negligible. Please visit [http://lmi.state.oh.us/cep/CEP\\_NAICS.htm#Publications](http://lmi.state.oh.us/cep/CEP_NAICS.htm#Publications) for additional statistics.

All unemployment figures are annualized, non-seasonally adjusted estimates by the Local Area Unemployment Statistics (LAUS) Section of LMI, published on the Internet as of May 2007. For additional statistics, please visit <http://lmi.state.oh.us/ASP/LAUS/vbLaus.htm>.

Per capita income figures for counties are in nominal dollars (not adjusted for inflation) and were published April 26, 2007 by the U.S. Bureau of Economic Analysis (BEA). Analysts at LMI calculated income figures for WIAs. For more information, please visit <http://www.bea.gov/regional/index.htm#state>.

Construction data are reported by the U.S. Census Bureau and are available through the Ohio Department of Development, Office of Strategic Research at [http://www.odod.state.oh.us/research/Reports\\_in\\_population\\_and\\_housing-Housing\\_reports.htm#P6](http://www.odod.state.oh.us/research/Reports_in_population_and_housing-Housing_reports.htm#P6). Analysts at LMI calculated summary data for WIAs. Data are also available at <http://www.census.gov/const/www/permitsindex.html>.