

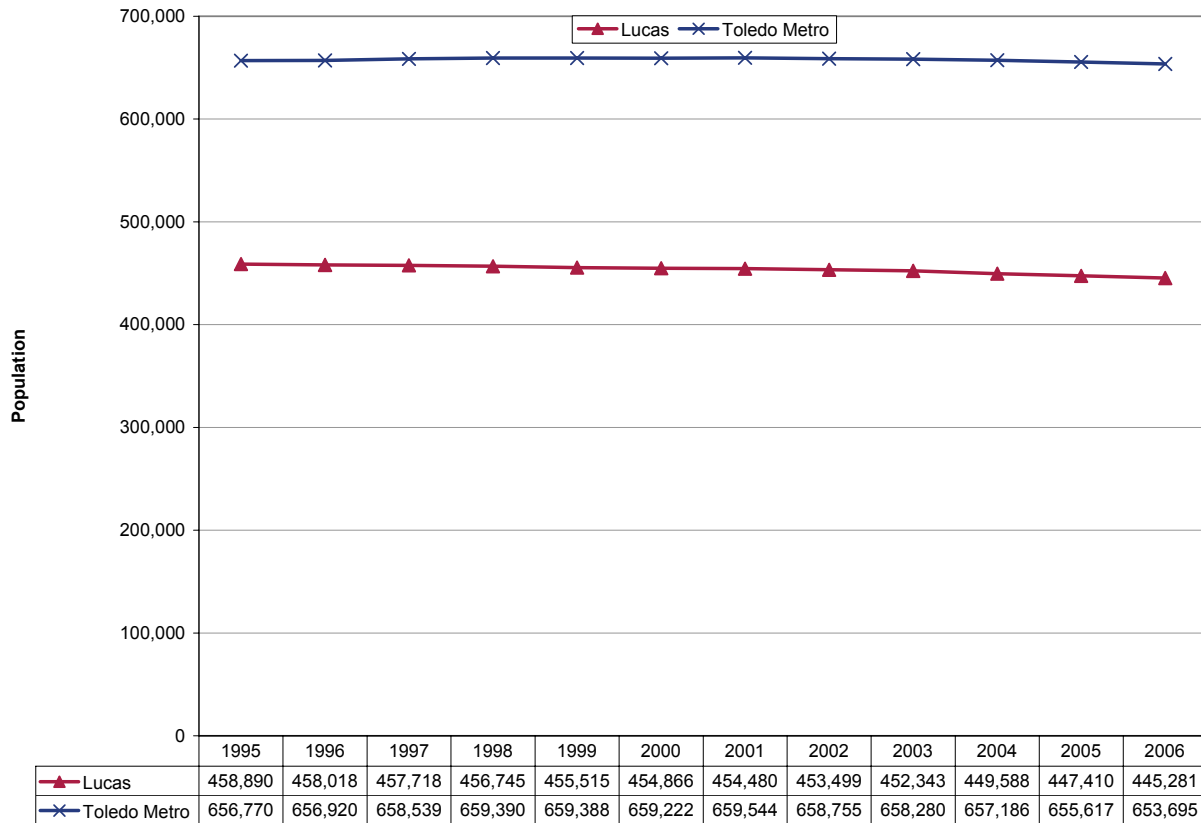
**Updates to Workforce Analysis Reports
The Source: Northwest Ohio
July 2007**

This document contains updates to the Workforce Analysis report for The Source: Northwest Ohio, published in April 2007. This is the Workforce Investment Area for Lucas County. For additional information, please see the Technical Notes at the end of this document.

Table of Contents

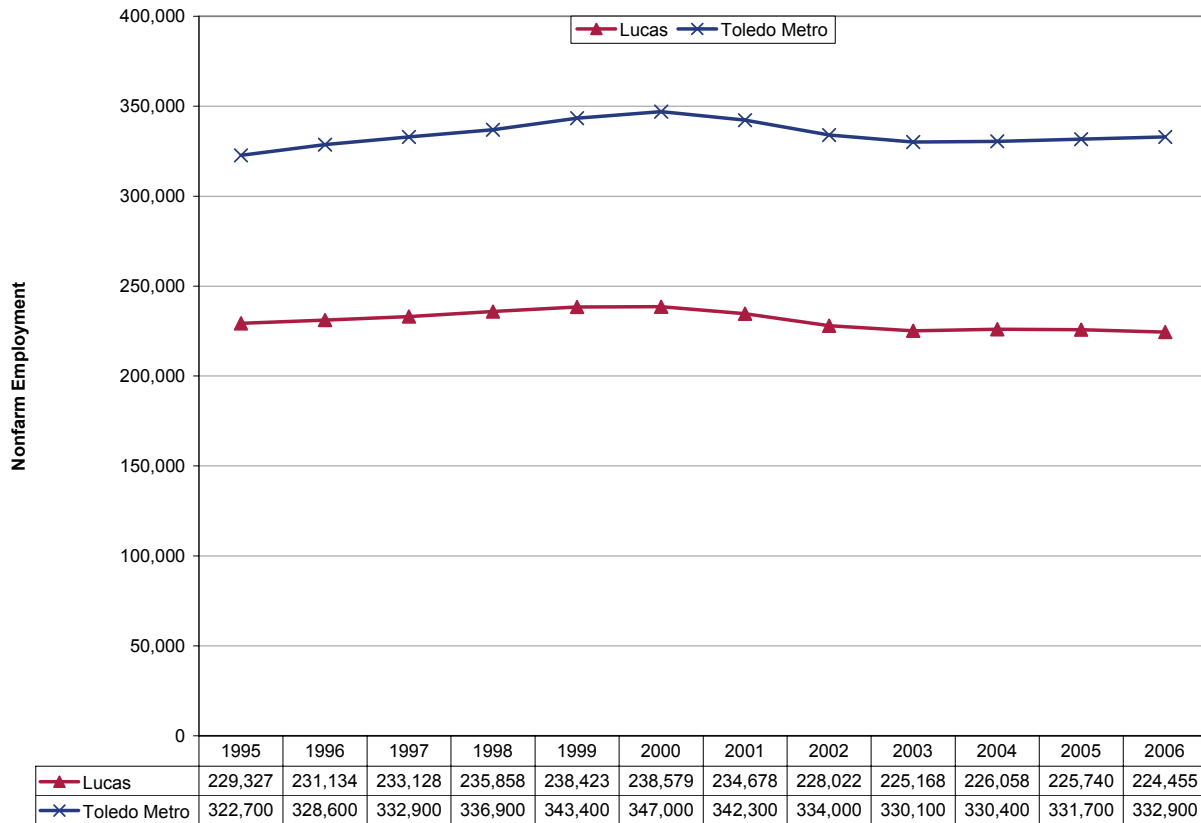
Trends Update	Update to Page
Population	3
Employment	4
Unemployment Rates	5
Per Capita Income.....	6
New Residential Building Permits	7

Population



Population has declined 3.0 percent from 1995 to 2006, falling to about 445,300 residents. For comparison, the Toledo metropolitan area lost only 0.5 percent of its population during this period. This suggests a general migration of residents out of the central city into suburban communities. Statewide population grew 2.5 percent during this period while national population increased by 12.4 percent.

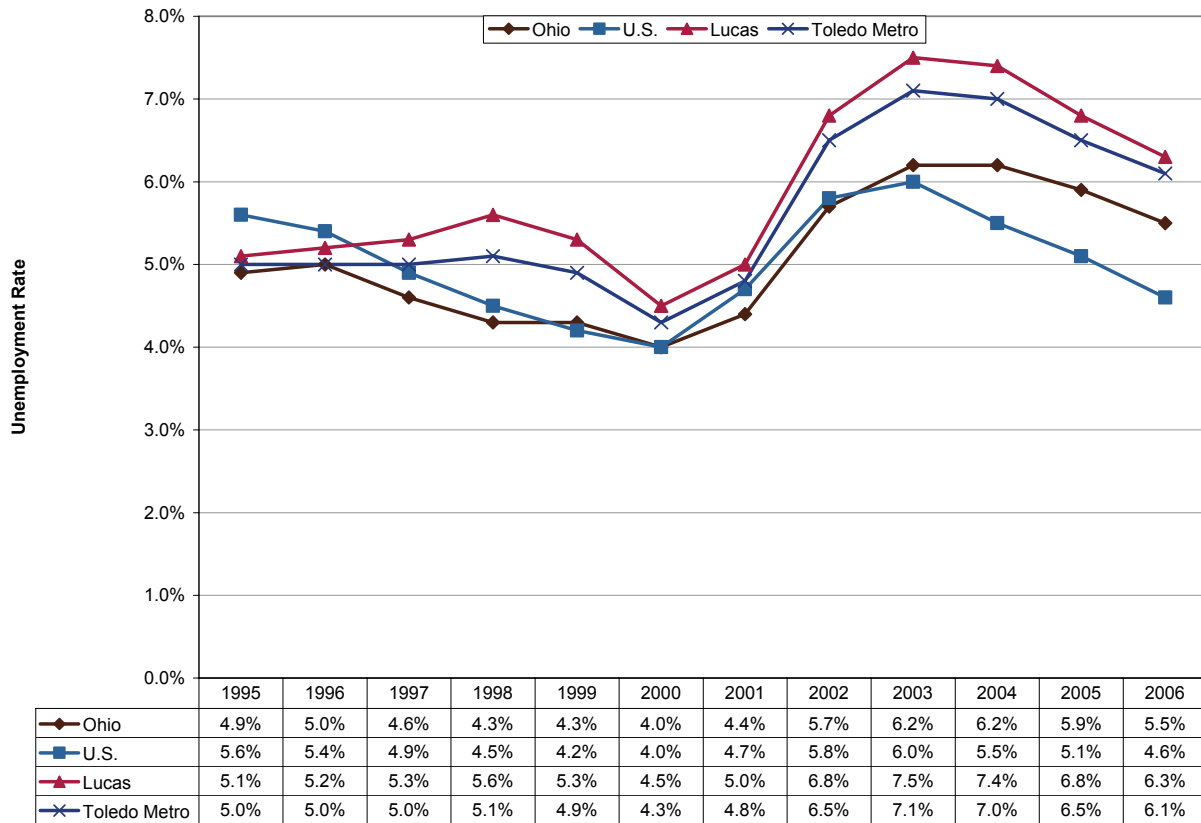
Employment



After nonfarm employment increases in the late 1990s, Lucas County shed approximately 14,000 jobs between 2000 and 2006 (-5.9%). This accounts for almost all of the lost jobs in the larger Toledo metropolitan area during the same period, although the metropolitan area has recovered slightly since 2003.¹ By comparison, Ohio nonfarm employment fell 3.5 percent from 2000 to 2006 after slight increases since 2003.

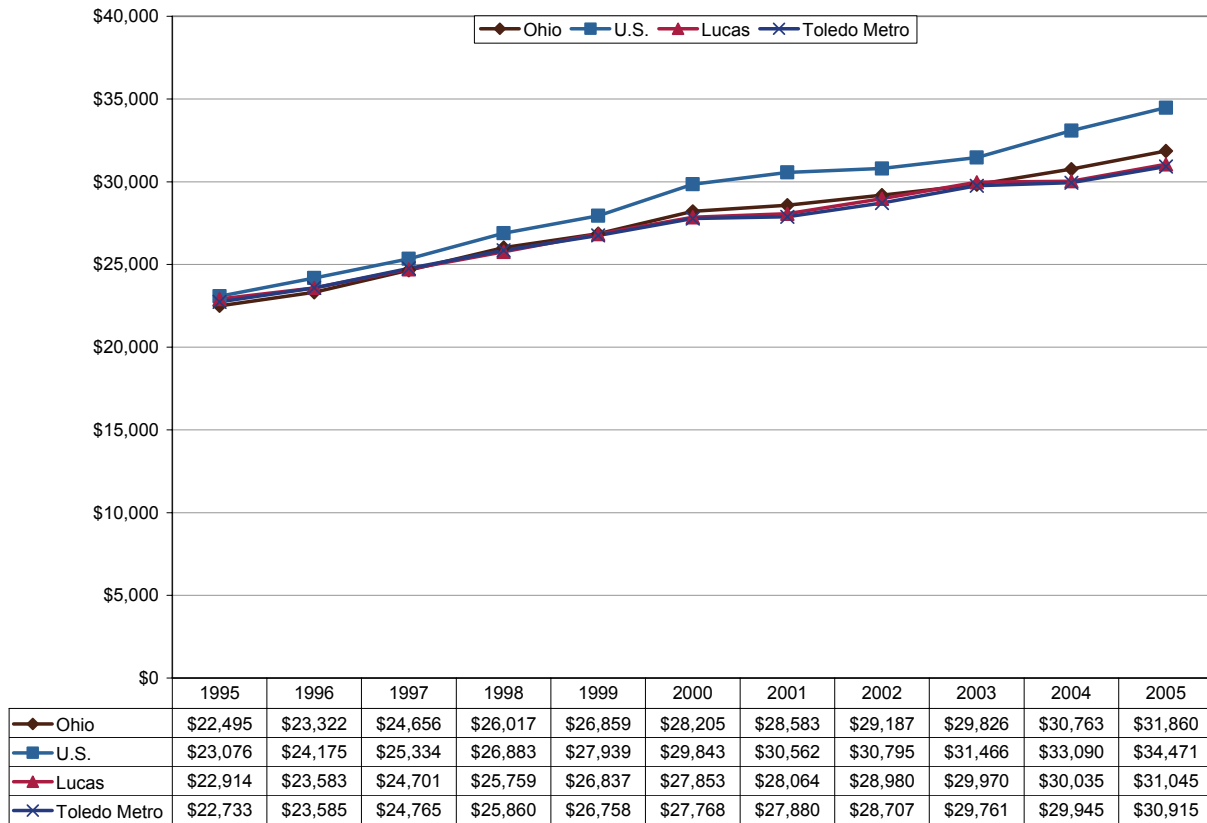
¹ The source of data for the Toledo metropolitan area is the Current Employment Statistics (CES) program. See Technical Notes for details.

Unemployment Rates



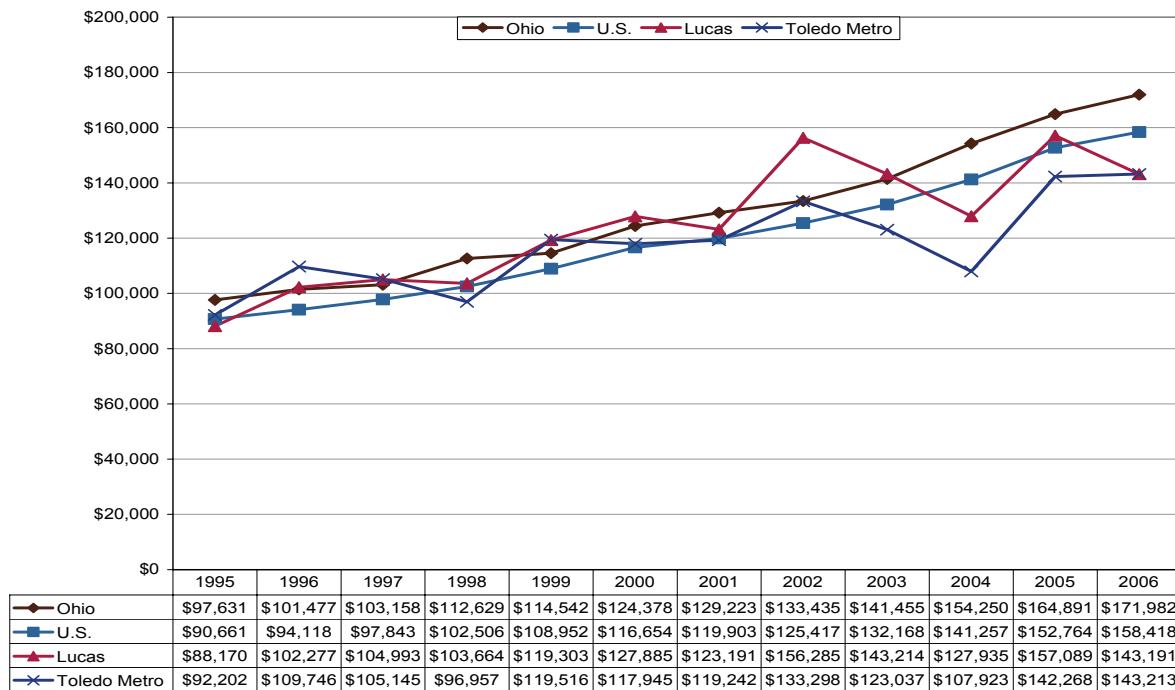
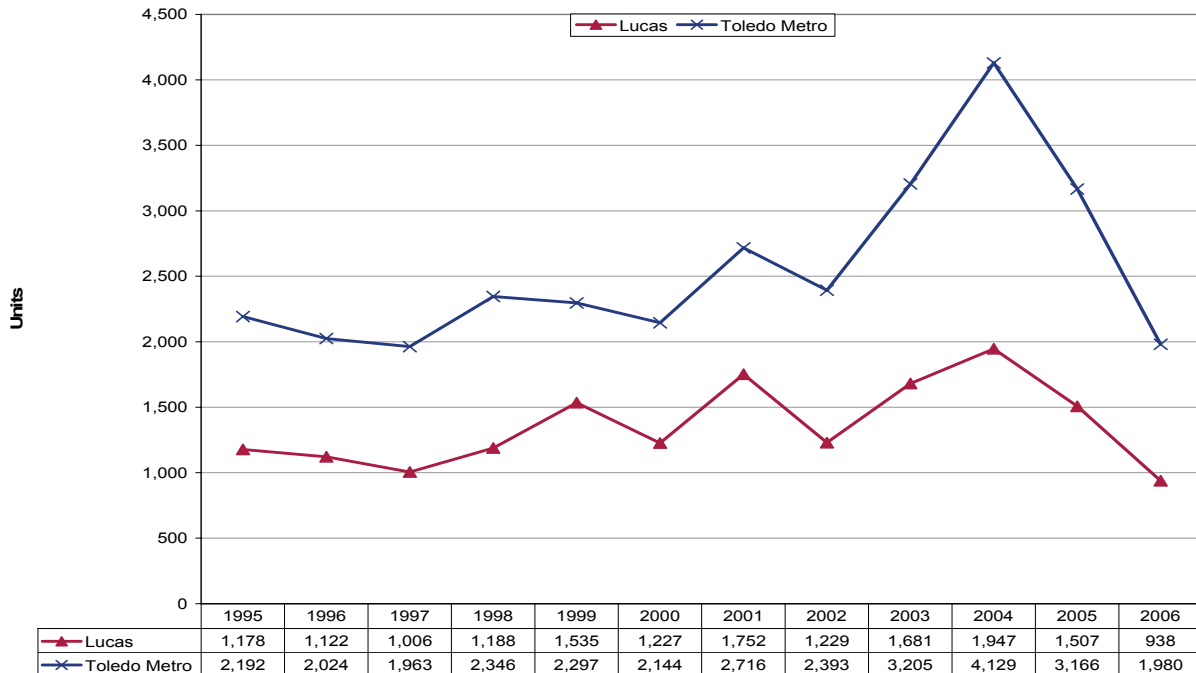
County unemployment in 2006 was 6.3 percent, a decline of 1.2 percentage points from the peak in 2003. For comparison, unemployment in the Toledo metropolitan area fell one percentage point to 6.1 percent. The Ohio and U.S. unemployment rates fell 0.7 and 1.4 percentage points, respectively, from their peaks in 2003.

Per Capita Income



Per capita income in Lucas County in 2005 was \$31,045, having grown at a 3.1 percent annual compound rate from 1995. Per capita income levels in Lucas County were nearly identical to those of the Toledo metropolitan area during this period. State and national growth rates were 3.5 percent and 4.1 percent, respectively.

Residential Building Permits



After a boom in 2004, new residential construction activity has fallen significantly in both the county and the metropolitan area. Lucas County accounted for 47.4 percent of metropolitan construction activity in 2006. Average valuation has shown a general upward trend in the last ten years. Ohio permits began to decline in 2004. Nationwide, there was a significant drop in the number of residential building permits granted from 2005 to 2006.

Technical Notes

For a map of Ohio's Workforce Investment system, please visit <http://lmi.state.oh.us/maps/MapofOneStops.htm>.

All population figures are annual estimates by the U.S. Census Bureau, published on the Internet as of May 2007. Analysts at the Ohio Bureau of Labor Market Information (LMI) summed county population to produce totals for local regions. Please visit <http://www.census.gov/popest/estimates.php> for additional information.

Employment figures for Lucas County are from the Quarterly Census of Employment and Wages by the U.S. Bureau of Labor Statistics (BLS) and LMI, published on the Internet in 2007. 2006 figures are based on preliminary quarterly data posted on the Labor Market Info Classic site and subject to revision this fall. Federal government employment, which is not covered by Ohio's unemployment compensation system, had inadvertently been omitted from the totals for 1995-1998 in the original report. That has been corrected in this update. In most counties the difference was negligible. Please visit http://lmi.state.oh.us/cep/CEP_NAICS.htm#Publications for additional statistics.

Employment figures for the Toledo Metropolitan Statistical Area are from the Current Employment Statistics (CES) program by the BLS and LMI, published on the Internet in 2007. Please visit <http://lmi.state.oh.us/ces/lmr.htm#AnnualAverages> for additional statistics.

All unemployment figures are annualized, non-seasonally adjusted estimates by the Local Area Unemployment Statistics (LAUS) Section of LMI, published on the Internet as of May 2007. For additional statistics, please visit <http://lmi.state.oh.us/ASP/LAUS/vbLaus.htm>.

Per capita income figures for counties are in nominal dollars (not adjusted for inflation) and were published April 26, 2007 by the U.S. Bureau of Economic Analysis (BEA). Analysts at LMI calculated income figures for WIAs. For more information, please visit <http://www.bea.gov/regional/index.htm#state>.

Construction data are reported by the U.S. Census Bureau and are available through the Ohio Department of Development, Office of Strategic Research at http://www.odod.state.oh.us/research/Reports_in_population_and_housing-Housing_reports.htm#P6. Analysts at LMI calculated summary data for WIAs. Data are also available at <http://www.census.gov/const/www/permitsindex.html>.