

Ohio

Department of
Job and Family Services

TO STRENGTHEN OHIO'S FAMILIES WITH SOLUTIONS TO TEMPORARY CHALLENGES

State of Ohio Workforce

2ND QUARTER

2 0 0 8



Quarterly Report on the State of Ohio's Workforce

Reference Period: Second Quarter 2008

(Per Ohio Revised Code 6301.10)

- **Analyst Summary**

- **Unemployment Rates and Related Data**
 - Employment Situation: Ohio and U.S.
 - Ohio Monthly Unemployment Insurance Initial Claims
 - Average Duration of Unemployment: Ohio and U.S.
 - Unemployment Insurance Benefit Exhaustions: Ohio and U.S.

- **Employment Data**
 - Ohio Nonagricultural Wage and Salary Employment
 - Trends in Ohio Nonagricultural Wage and Salary Employment
 - Ohio Leading Indicators
 - Jobs Gained or Lost

- **Related Information**
 - *2008 Ohio Economic Analysis: Changing Course*
 - Global Insight analysis
 - Federal Reserve Bank of Cleveland, Fourth District Beige Book

- **Technical Notes**

Ohio Department of Job and Family Services
Office of Workforce Development
Bureau of Labor Market Information
Release date: August 22, 2008

Analyst Summary

Ohio's unemployment rate increased to 6.2 percent during the second quarter of 2008, up from 5.5 percent during the first quarter of 2008 and up from 5.8 percent for the second quarter of 2007. The average number of Ohioans unemployed per month increased over the quarter from 330,000 to 370,000.

The U.S. unemployment rate for the second quarter averaged 5.3 percent, up from 4.9 percent during the first quarter of 2008 and up from 4.5 percent one year ago.

The number of initial claims for unemployment insurance filed in Ohio for the second quarter of 2008 were substantially higher than for the second quarter of 2007.

Ohio's nonagricultural wage and salary employment fell 9,200 over the second quarter to 5,415,000 on a seasonally adjusted basis. During the second quarter, goods-producing industries lost 7,800 jobs. Construction employment led the decline with a loss of 4,300 followed by a loss of 3,100 in durable goods manufacturing. Service-providing industries declined by 1,400 jobs overall. Trade, transportation, and utilities led the decline with 1,800 jobs lost. Losses among other service-providing industries were partially offset by gains in education and health services (1,600) and in professional and business services (1,300).

Compared to the second quarter of 2007, Ohio's nonagricultural wage and salary employment decreased by 14,400. Goods-producing industries lost 19,800, mostly in durable-goods industries. Service-providing industries increased by 5,400 from the first quarter of 2007. Increases were concentrated in education and health services (12,900), but these increases were partially offset by losses in other service-providing industries.

The composite index of Ohio's leading indicators decreased slightly from 96.1 to 95.9 for the second quarter of 2008, suggesting weak employment growth in mid to late 2008. The national composite index of leading economic indicators dropped from 102.0 to 101.8 for the second quarter. The number of permits for new residential construction in Ohio was 31 percent lower than for the second quarter of 2007. U.S. domestic auto production decreased this quarter and was lower than for the second quarter last year.

Unemployment Rates and Related Data

Employment Situation: Ohio and U.S. (Seasonally Adjusted)

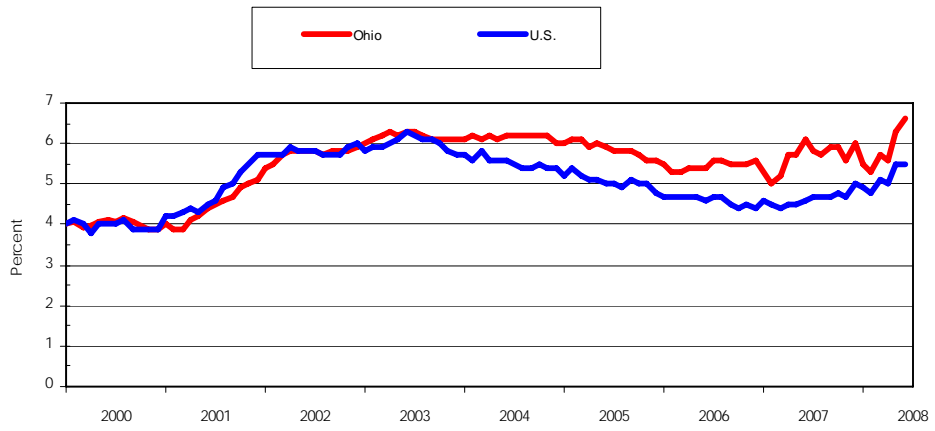
Ohio's unemployment rate for the second quarter of 2008 was 6.2 percent, up from the first quarter 2008 rate of 5.5 and up from 5.8 a year ago. The U.S. unemployment rate for the second quarter was 5.3 percent, up from the first quarter 2008 rate of 4.9 percent and up from 4.5 a year ago. The average number of Ohioans unemployed per month has increased over the quarter from 330,000 to 370,000.

Employment Situation Indicators for Ohio and U.S.

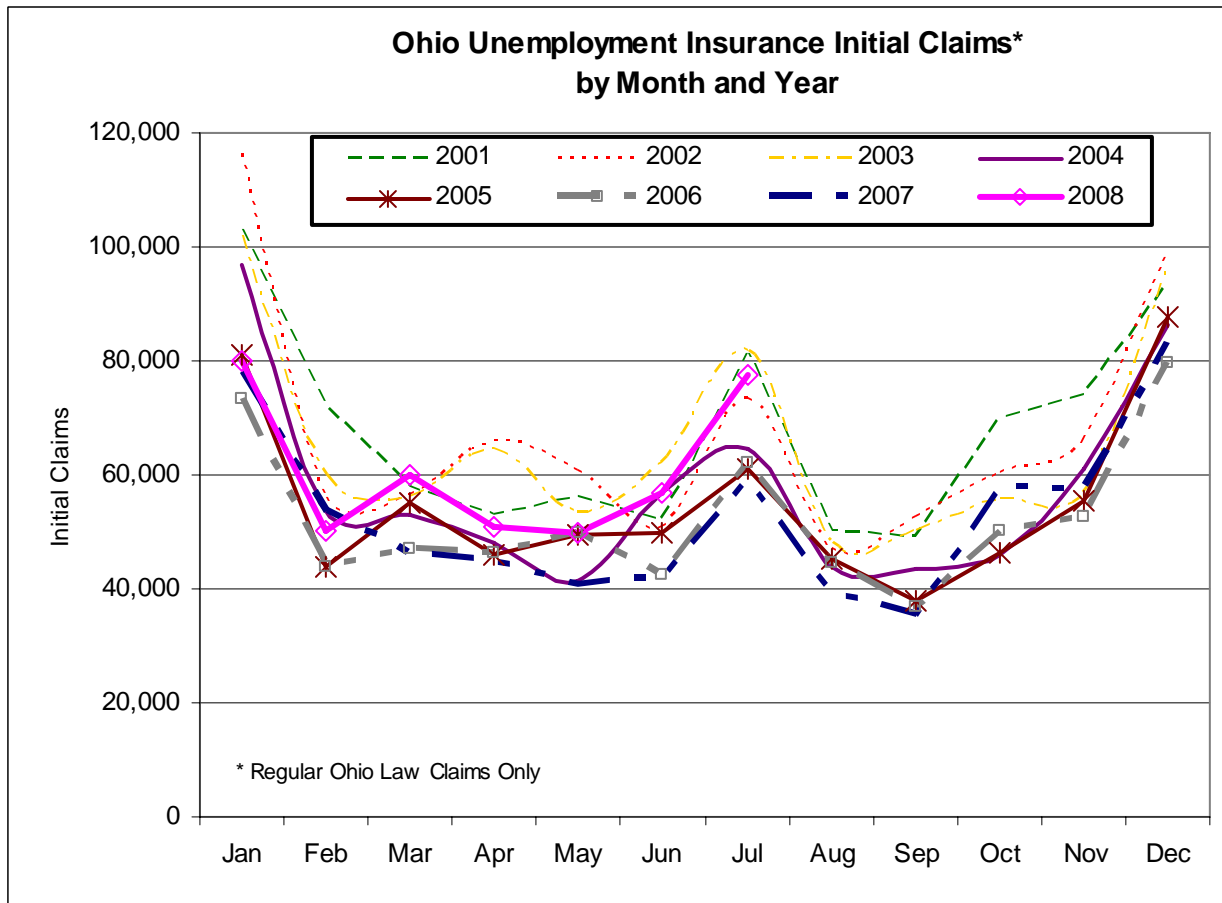
	Quarterly Data (in thousands)			Change (in thousands)		Percent Change	
	2nd Qtr. 2008	1st Qtr. 2008	2nd Qtr. 2007	From Last Quarter	From Last Year	From Last Quarter	From Last Year
Seasonally Adjusted							
	Ohio						
Civilian Labor Force	5,997	5,980	5,991	17	6	0.3%	0.1%
Employment	5,627	5,650	5,643	-23	-16	-0.4%	-0.3%
Unemployment	370	330	348	40	22	12.1%	6.3%
Unemployment Rate	6.2%	5.5%	5.8%	0.7%	0.4%		
	U.S.						
Civilian Labor Force	154,293	153,661	152,800	632	1,493	0.4%	1.0%
Employment	146,089	146,070	145,904	19	185	0.0%	0.1%
Unemployment	8,204	7,591	6,896	613	1,308	8.1%	19.0%
Unemployment Rate	5.3%	4.9%	4.5%	0.4%	0.8%		

- Ohio and U.S. unemployment rates closely mirrored each other through mid-2003.
- During the latter half of 2003, the rates began to diverge as Ohio's unemployment rate remained high while the U.S. unemployment rate steadily declined.
- During the last six months, Ohio's unemployment rate has average 0.8 percentage point higher than the U.S. rate.

Ohio and U.S. Seasonally Adjusted Unemployment Rates



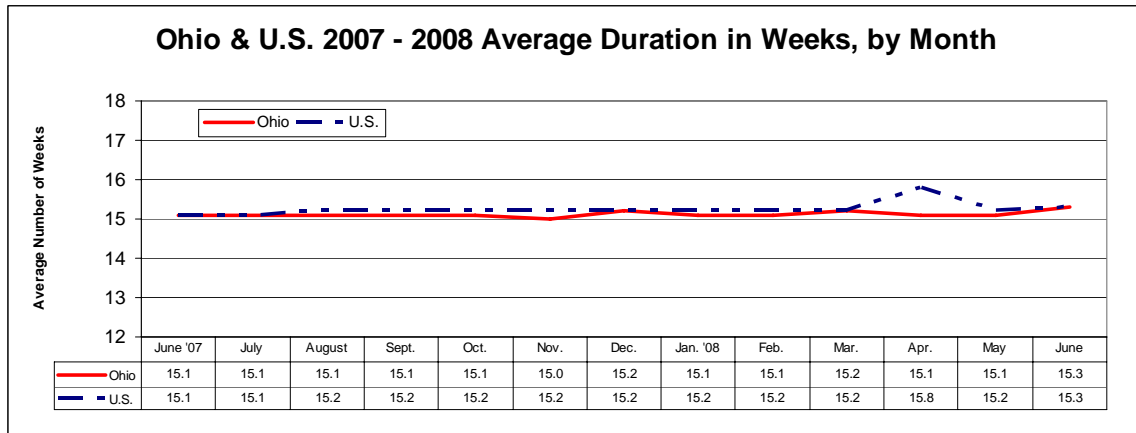
Ohio Monthly Unemployment Insurance Initial Claims



- Monthly initial claims for unemployment insurance follow a typical seasonal pattern every year, with major increases in claims activity occurring in January, July and December.
- Initial claims were generally elevated from 2001 through 2007 when compared to 2000 for any given month.
- Initial claims in July 2008 were substantially higher than the level recorded in July 2007.

Average Duration of Unemployment: Ohio and U.S.

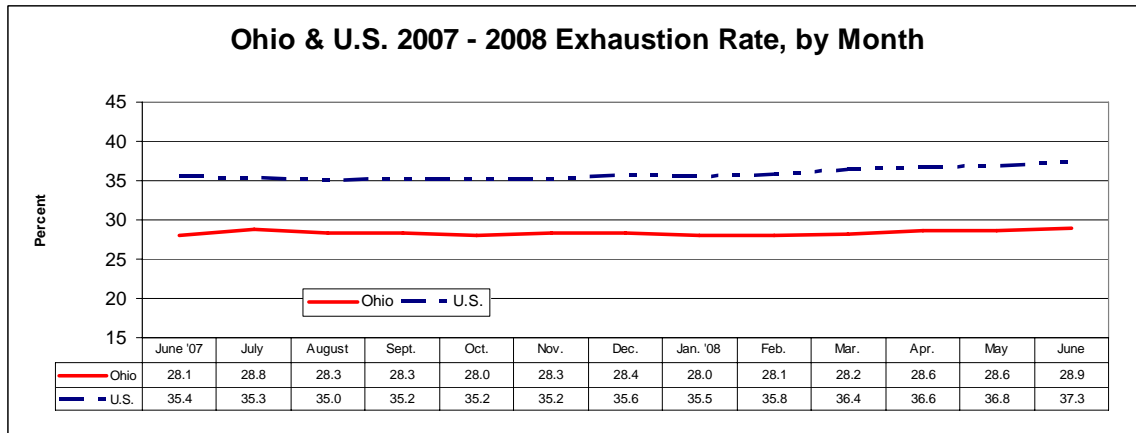
Average duration represents the average number of weeks of compensation received by unemployed claimants during the represented period.



- Ohio's average duration of unemployment closely mirrored the U.S. for the past 12 months.
- The Ohio average duration increased to 15.3 for June 2008 while the U.S. average increased slightly to 15.3 for the same period.

Unemployment Insurance Benefit Exhaustions: Ohio and U.S.

The exhaustion rate represents a measure of the proportion of unemployment insurance recipients who ultimately exhaust their benefits.



- Ohio and national exhaustion rates have remained relatively unchanged over the past 12 months.
- Ohio's exhaustion rate stayed consistently lower than that of the U.S.
- Ohio's exhaustion rate increased to 28.9 weeks, while the U.S. rate increased to 37.3 weeks in June 2008.

Employment Data

Ohio Nonagricultural Wage and Salary Employment (Seasonally Adjusted)

Ohio's nonagricultural wage and salary employment fell 9,200 over the quarter, from 5,424,200 in the first quarter of 2008 to 5,415,000 in the second quarter of 2008.

Employment in goods-producing industries, at 992,300, was 7,800 lower. Construction employment was down 4,300. Losses in durable goods (-3,100) and nondurable goods (-500) reduced manufacturing 3,600. Natural resources and mining increased 100. Service-providing industries slipped 1,400 to 4,422,700. Small-to-moderate declines occurred in trade, transportation, and utilities (-1,800), government (-900), information (-800), other services (-700), and financial activities (-300). Educational and health services advanced 1,600, while professional and business services rose 1,300. Leisure and hospitality added 200 jobs.

Over the year, nonfarm wage and salary employment decreased 14,400. Goods-producing industries fell 19,800. The loss was concentrated in manufacturing (-14,600) due chiefly to a drop of 11,400 in durable-goods industries. Construction lost 5,600 jobs. Natural resources and mining advanced 400. Service-providing industries rose 5,400 from second quarter, 2007. The largest gain was in educational and health services (+12,900). Professional and business services advanced 2,000. Other services dropped 2,500. Also down were information (-1,700), leisure and hospitality (-1,700), trade, transportation, and utilities (-1,500), financial activities (-1,400), and government (-700).

Nonagricultural Wage and Salary Employment Estimates for Ohio^a

Seasonally Adjusted

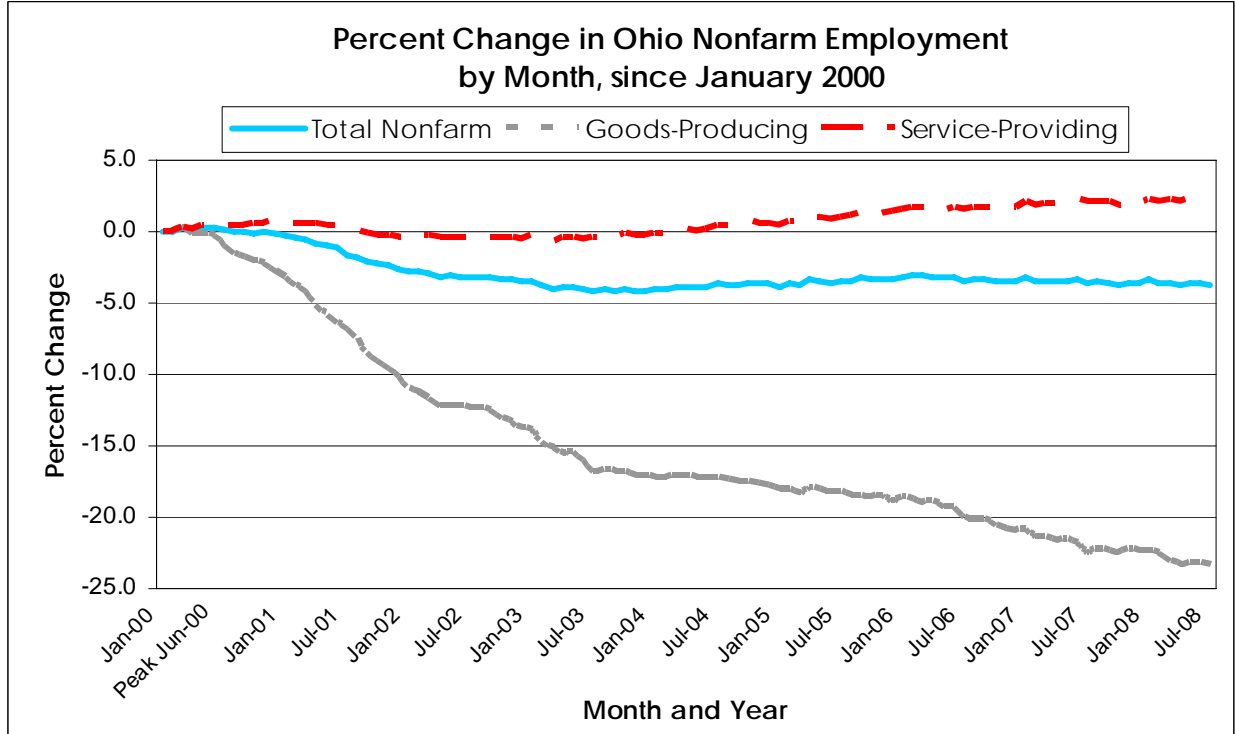
Employer Survey Data^b

	Employment (in thousands)			Change (in thousands)		Percent Change	
	2nd Qtr. 2008	1st Qtr. 2008	2nd Qtr. 2007	From Last Quarter	From Last Year	From Last Quarter	From Last Year
Total	5,415.0	5,424.2	5,429.4	-9.2	-14.4	-0.2%	-0.3%
Goods-Producing Industries	992.3	1,000.1	1,012.1	-7.8	-19.8	-0.8%	-2.0%
Natural Resources and Mining	12.1	12.0	11.7	0.1	0.4	0.8%	3.4%
Construction	219.9	224.2	225.5	-4.3	-5.6	-1.9%	-2.5%
Manufacturing	760.3	763.9	774.9	-3.6	-14.6	-0.5%	-1.9%
Durable Goods	521.9	525.0	533.3	-3.1	-11.4	-0.6%	-2.1%
Nondurable Goods	238.4	238.9	241.6	-0.5	-3.2	-0.2%	-1.3%
Service-Providing Industries	4,422.7	4,424.1	4,417.3	-1.4	5.4	0.0%	0.1%
Trade, Transportation, and Utilities	1,050.5	1,052.3	1,052.0	-1.8	-1.5	-0.2%	-0.1%
Wholesale Trade	240.0	240.6	239.1	-0.6	0.9	-0.2%	0.4%
Retail Trade	599.0	600.3	602.0	-1.3	-3.0	-0.2%	-0.5%
Transportation, Warehousing, and Utilities	211.5	211.4	210.9	0.1	0.6	0.0%	0.3%
Information	86.3	87.1	88.0	-0.8	-1.7	-0.9%	-1.9%
Financial Activities	300.4	300.7	301.8	-0.3	-1.4	-0.1%	-0.5%
Finance and Insurance	233.3	233.9	234.5	-0.6	-1.2	-0.3%	-0.5%
Real Estate and Rental and Leasing	67.1	66.8	67.3	0.3	-0.2	0.4%	-0.3%
Professional and Business Services	669.2	667.9	667.2	1.3	2.0	0.2%	0.3%
Professional and Technical Services	249.1	249.8	245.6	-0.7	3.5	-0.3%	1.4%
Management of Companies and Enterprises	105.3	105.2	105.8	0.1	-0.5	0.1%	-0.5%
Administrative, Support, and Waste Services	314.8	312.9	315.8	1.9	-1.0	0.6%	-0.3%
Educational and Health Services	801.5	799.9	788.6	1.6	12.9	0.2%	1.6%
Educational Services	100.1	101.2	98.3	-1.1	1.8	-1.1%	1.8%
Health Care and Social Assistance	701.4	698.7	690.3	2.7	11.1	0.4%	1.6%
Leisure and Hospitality	499.5	499.3	501.2	0.2	-1.7	0.0%	-0.3%
Arts, Entertainment, and Recreation	65.2	66.4	65.4	-1.2	-0.2	-1.8%	-0.3%
Accommodation and Food Services	434.3	432.9	435.8	1.4	-1.5	0.3%	-0.3%
Other Services	219.9	220.6	222.4	-0.7	-2.5	-0.3%	-1.1%
Government	795.4	796.3	796.1	-0.9	-0.7	-0.1%	-0.1%
Federal Government	79.0	78.5	76.8	0.5	2.2	0.6%	2.9%
State Government	166.0	168.4	166.9	-2.4	-0.9	-1.4%	-0.5%
Local Government	550.4	549.4	552.4	1.0	-2.0	0.2%	-0.4%

^aSubtotals may not add to totals due to rounding. All data exclude military personnel.

^bFrom the Current Employment Statistics Survey, a monthly survey of approximately 12,100 employers conducted by ODJFS in cooperation with the U.S. Bureau of Labor Statistics. Estimates represent nonagricultural wage and salary jobs by place of work.

Trends in Ohio Nonagricultural Wage and Salary Employment

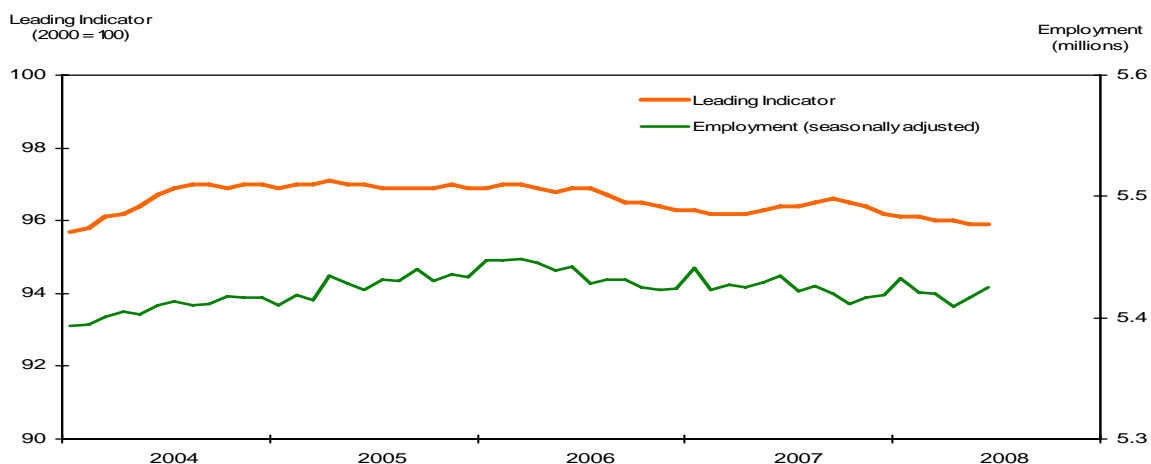


- Since January 2000, Ohio's goods-producing industries (manufacturing, construction and natural resources and mining) have lost 23.3 percent of their employment while service-providing industries have risen 2.0 percent.
- In comparison, the U.S. has lost 12.9 percent of the employment in goods-producing industries while service-providing industries increased 9.4 percent.

Leading Indicators: Ohio and U.S. (Seasonally Adjusted)

Ohio's composite index of leading indicators declined from 96.1 to 95.9 in the second quarter of 2008, suggesting weak employment growth in mid to late 2008. The composite index was lower than for the second quarter of 2007. The national composite index of leading economic indicators decreased to 101.8, and this was lower than the second quarter of 2007.

Ohio Leading Indicator and Employment



The second quarter averages of the individual Ohio index components (not seasonally adjusted) were poorer than one year ago. Permits and valuation for new housing construction were lower than for the second quarter of 2007. Initial claims for unemployment insurance were higher than for the second quarter of 2007. The average weekly hours for manufacturing production workers was slightly lower than for the first quarter of 2007.

Economic Indicators	Data			Change		Percent Change	
	2nd Qtr. 2008	1st Qtr. 2008	2nd Qtr. 2007	From Last Quarter	From Last Year	From Last Quarter	From Last Year
Ohio							
Leading Indicator Index (2000=100)	95.9	96.1	96.4	-0.2	-0.5	-0.2%	-0.5%
Average Initial Claims for Unemployment Insurance	53,266	67,489	43,084	-14,223	10,182	-21.1%	23.6%
Average Weekly Hours for Manufacturing	41.3	41.1	41.7	0.2	-0.4	0.5%	-1.0%
Average Valuation of Housing Permits (millions of dollars)	390.586	233.952	567.699	156.634	-177.113	67.0%	-31.2%
Average Number of Housing Permits	2,246	1,374	3,284	872	-1038	63.5%	-31.6%
National Data							
National Composite Index of Leading Economic Indicators (1996=100)	101.8	102.0	103.9	-0.2	-2.1	-0.2%	-2.0%
U.S. Domestic Auto Production (annualized in millions)	3.857	4.118	4.198	-0.261	-0.341	-6.3%	-8.1%
Difference between 10-Year and 1-Year Treasuries, Constant Maturities	1.81	1.56	-0.09	0.25	1.90	16.0%	-2111.1%
Average Number of Housing Permits	95,957	75,568	134,801	20,389	-38,844	27.0%	-28.8%

Jobs Gained or Lost

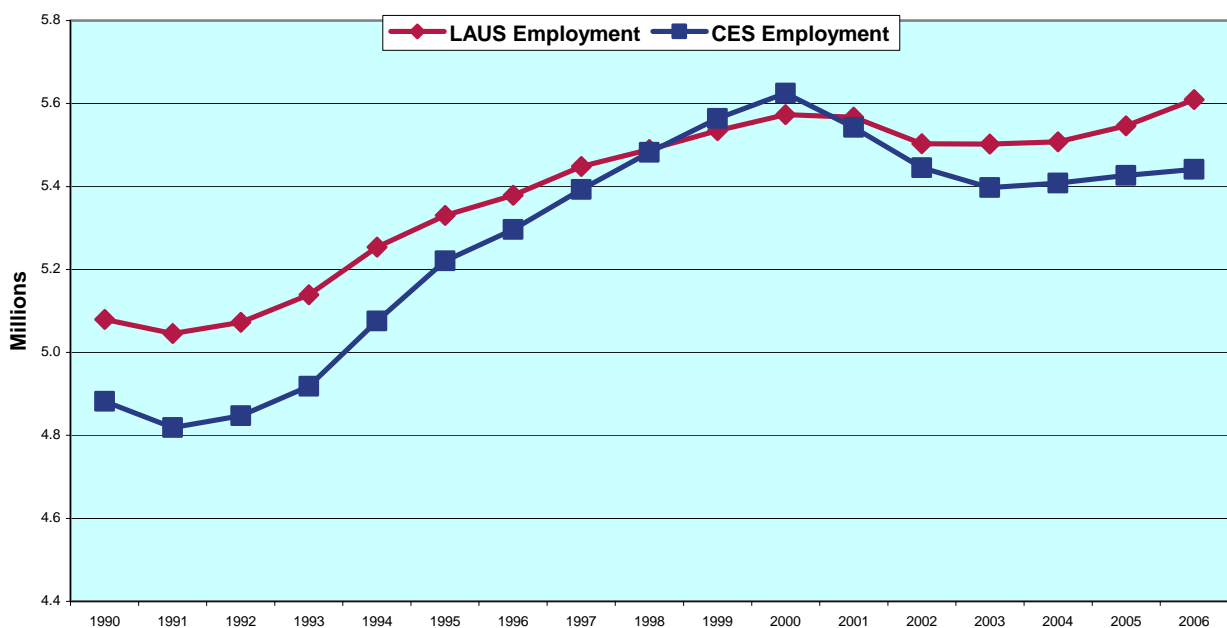
Current Employment Survey (CES)

The most reliable and most easily understood statistic on jobs is the nonagricultural wage and salary employment which comes from the Current Employment Survey (see the Technical Notes section for more detail). This business establishment survey tracks most closely with business cycle changes and is the statistical source most heavily relied on by labor economists, including those at the Bureau of Labor Statistics. It provides information on jobs lost or gained from month-to-month and over the year. The trend in nonagricultural employment is CES data. Of course, there is considerable dynamic activity behind these figures in respect to job changes, layoffs and hiring activity, which in themselves are not represented in the net job statistic.

Local Area Unemployment Statistics (LAUS) and Current Population Survey (CPS)

The employment numbers published under the Employment Situation Indicators chart for Ohio (LAUS data) earlier in this packet are heavily dependent on the Current Population Survey (often referred to as the "Household" survey). These figures are useful for understanding the unemployment rate and can be useful for the labor economist's analysis of what is happening in the labor market. However, as a general measure of job growth or decline and corresponding public announcements, it has proven problematic. The CPS for Ohio contains a small sample of households, tends to be highly volatile and is benchmarked (i.e., controlled to a known universe) only once every ten years with the decennial census. It has not proven to be a good measure of business cycles. For example, the LAUS employment numbers showed only a slight decline at the onset of the 2001 recession and a much more rapid recovery in 2005 and 2006 than indicated by the CES data (see chart below). The LAUS data have no measure of job loss or gain by industry.

Ohio LAUS and CES Employment Trends, 1990-2006



Mass Layoff Announcements

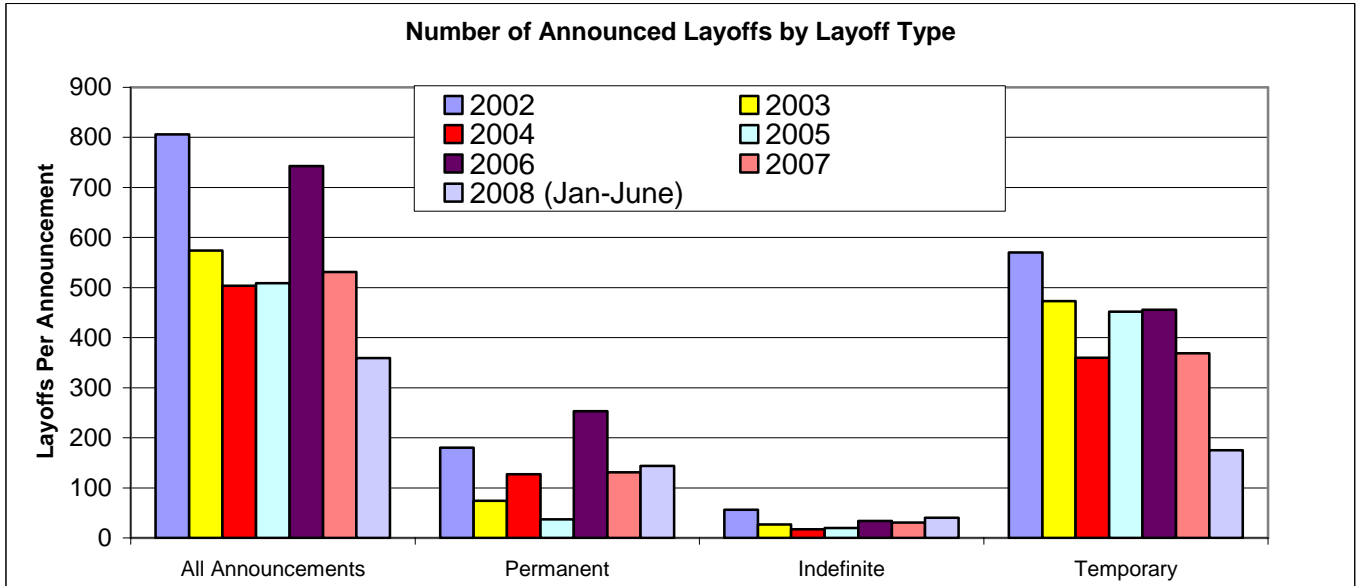
Mass layoff announcements are reported by the business entity. These statistics have proven useful to explain major shifts in the employment situation that may occur at the local level from one month to another. However, they must be used with caution, particularly when considering them at a summary level or as a state-wide indicator. These statistics have the following caveats.

- ODJFS requests employers to provide the greatest number of workers potentially affected and actual numbers are normally less.
- Any employer may announce mass layoffs multiple times and / or for multiple locations over the year.
- There is no formal process or monitoring to assure consistent reporting.
- These numbers are reported "intent" and are never independently verified.
- They may be reported but then circumstances change that decrease the size of the layoff or eliminate the need for a layoff.
- Even if a layoff materializes, it does not necessarily mean people are unemployed as a result. They may retire, work part time, take severance pay or find another job.
- A number of the reported layoffs are part of a normal business cycle, where the business normally restricts operations for product change-over, inventory processes or because of seasonal demand cycles.
- Some layoffs are very short lived, while others could take a year or more to complete. There is no precise measure of timing.

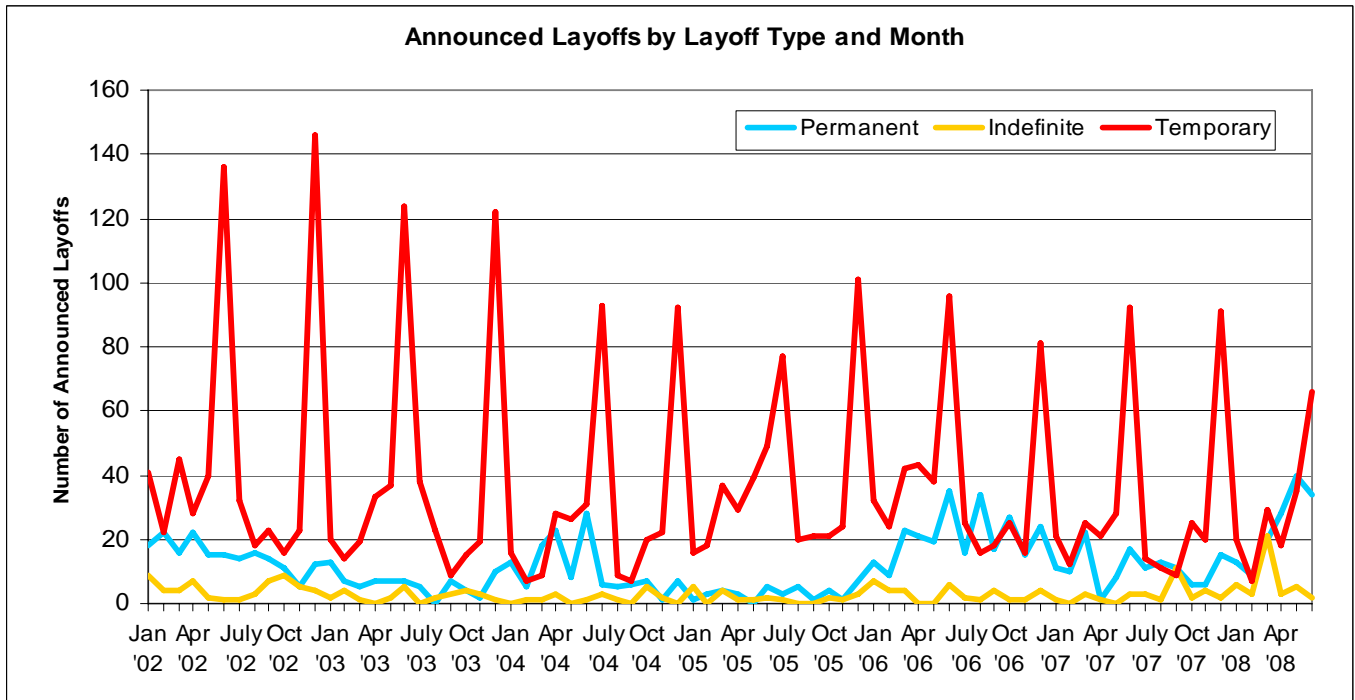
See Mass Layoff Announcements table and graph on next page.

Mass Layoff Announcements, 2002 to June 2008

Year	Layoff Announcements	Announced Laid Off	Permanent Layoffs		Indefinite Layoffs		Temporary Layoffs	
			Events	Employees	Events	Employees	Events	Employees
2002	806	147,385	180	14,563	56	6,969	570	125,853
2003	574	128,497	74	9,187	27	3,201	473	116,109
2004	504	100,098	127	12,240	17	1,781	360	86,077
2005	509	131,712	37	4,894	20	2,072	452	124,746
2006	743	131,628	253	13,481	34	3,224	456	114,923
2007	531	95,454	131	6,822	31	3,331	369	85,301
2008 (Jan-June)	359	68,557	144	6,175	40	11,722	175	50,660



The graph below is an example of the highly seasonal nature of these mass layoff announcements.



Related Information

Related Information

2008 Ohio Economic Analysis: Changing Course: The past year has seen some dramatic changes in the state and national economies. This new report provides a general overview of the state's labor economy through an examination of economic indicators important to Ohio's future and summarizes several key workforce development programs that have come from the Turnaround Ohio initiatives. The report is available at:
<http://lmi.state.oh.us/research/2008OhioEconomicAnalysis.pdf>.

Global Insight analysis: Global Insight, an international economic analysis firm, continues to expect negative economic growth for the fourth quarter of 2008 and first quarter of 2009 as the economic stimulus package runs its course. Inflation concerns have decreased somewhat because of the drop in oil prices, but inflation is still expected to run at about 5 percent. The housing situation has yet to bottom out, and credit conditions for consumers are tightening. Global Insight expects a decline in private nonresidential construction through 2009. Some foreign economies are starting to slow down, which may affect what has been a positive export situation. Global Insight is arguing that economic indicators show that this downturn may be milder than the 2001 recession, but this recovery may be jobless as were the past two recessions.

Federal Reserve Bank of Cleveland, Fourth District Beige Book: The latest Beige Book report on the Fourth District shows a mixed economic picture. Manufacturing output has been fairly stable, although auto manufacturing has declined. Some production increases are due to seasonal factors and export demand, and declines are attributed to current economic conditions. The housing industry is weak, but commercial construction is picking up. Demand for commercial and industrial loans has been growing. The most recent update of the Beige Book available at:
www.clevelandfed.org/research/data/regional/beigebook/beigebook4d.cfm

Technical Notes

Data Sources and Additional Resources Links

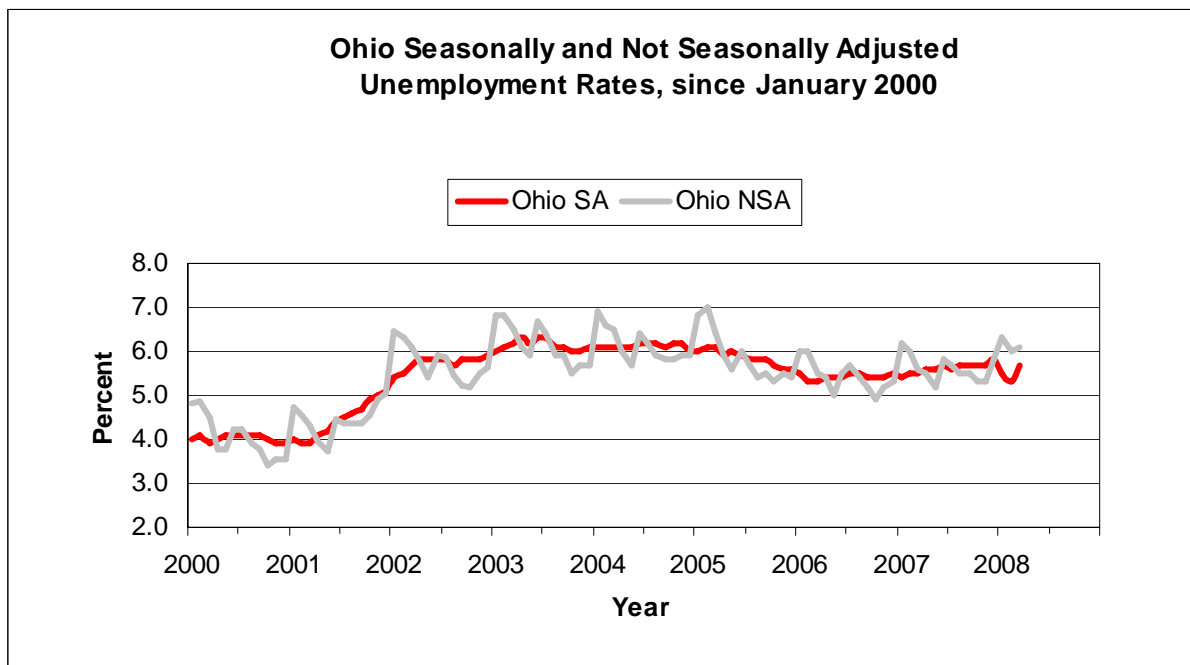
Seasonal Adjustment

Ohio and U.S. unemployment rates and labor force data are published monthly by the BLS. Two sets of data are published: seasonally adjusted data and not seasonally adjusted data. County data are not seasonally adjusted because seasonal adjustment factors tend to be unreliable for small areas.

Seasonal adjustment is used to remove fluctuations in unemployment and labor force trends that normally occur with changes in the season. The removal of seasonal variation allows evaluation of the unemployment rates as an indicator of economic change.

Seasonal variation in the employment situation occurs for a variety of natural and institutional reasons. Examples include reduction of employment involving outdoor activities during winter, large changes in labor force and unemployment levels with opening and closing of schools, and employment reductions during the automobile model changeover period. The overall impact of such events is a seasonal rise in unemployment rates during the winter months, usually peaking in January and February, and a drop in unemployment rates during the spring and late summer with May and September typically the low months.

The graph below presents the wide month-to-month changes that occur in the not seasonally adjusted data which reinforces our use of seasonally adjusted data, when available.



Unemployment Rates and Related Data

Employment Situation: Ohio and U.S

U.S. data are derived from a national household survey known as the Current Population Survey (CPS). This survey is conducted monthly by the U.S. Bureau of the Census for the U.S. Bureau of Labor Statistics (BLS). The survey collects data on the demographic characteristics and labor force status of household members, including employment and unemployment from approximately 60,000 households.

Ohio data are developed in cooperation with the BLS using the State Time Series Analysis and Review System (STARS). This method relies heavily on monthly unpublished CPS data as well as current wage and salary employment and unemployment insurance statistics. The time series model is designed to provide data on employment of all types of workers, based on place of residence.

Ohio Monthly Unemployment Insurance Initial Claims

Initial claims information was obtained from administrative records of the Ohio unemployment compensation program, operated by the Ohio Department of Job and Family Services.

An initial claim is defined as any notice of unemployment filed to request a determination of entitlement to and eligibility for compensation, or to begin a second or subsequent period of eligibility within a benefit year. Initial claims counts presented in this report include new, additional, transitional, and interstate agent claims. Beginning in January 2005, transitional claims are excluded from counts since they do not represent newly unemployed workers.

Average Duration of Unemployment and Unemployment Insurance Benefit Exhaustions: Ohio and U.S

Average duration of unemployment was calculated as the total number of weeks compensated for the previous 12 months divided by the total number of first payments for the same 12 month period. First payment is defined as the first payment in a benefit year for a week of unemployment.

Exhaustion rates were calculated as the number of claimants exhausting benefits divided by the number of claimants' first receiving benefits two quarters earlier.

Quarterly totals for average duration of unemployment and number of

exhaustions in the U.S. and Ohio were obtained from the U.S. Department of Labor, Employment and Training Administration (ETA). The national ETA office collects unemployment data from the states, then compiles and redistributes state and national unemployment insurance statistics through a required reporting mechanism in which all states participate.

The Claims and Payment Activities report (ETA-5159) serves as the basis for these figures. The DOL-ETA site is listed below.

<http://workforcesecurity.doleta.gov/unemploy/content/data.asp>

Unemployment Rates for U.S. and Eight Largest States

The unemployment rates presented are the most recent seasonally adjusted data available from BLS for the nation's eight most populated states. This graph includes data for the three months prior to the current reference month because some the states presented release data after the Ohio release date. URL web links for each State are present below and are the quickest source of the most current data.

California	http://www.labormarketinfo.edd.ca.gov
Florida	http://www.labormarketinfo.com/laus/
Illinois	http://lmi.ides.state.il.us/laus/illaus_seasadj.htm
Michigan	http://www.michlmi.org/
New York	http://www.labor.state.ny.us/
Ohio	http://lmi.state.oh.us/LAUS/Current.htm
Pennsylvania	http://www.paworkstats.state.pa.us
Texas	http://www.tracer2.com/?PAGEID=67&SUBID=120

Ohio County Unemployment Rates

Ohio sub-state employment and unemployment estimates are developed using a complex "building-block" methodology, prescribed by BLS. The methodology creates first approximation estimates of the employed and unemployed which are then proportionately adjusted so that they add to the state totals. A more complete statement of methodology may be found at: <http://lmi.state.oh.us/LAUS/Concepts.htm>.

Data for Ohio's sub-state areas are not seasonally adjusted because seasonal adjustment factors for small areas tend to be unreliable.

Employment Data

Ohio Nonagricultural Wage and Salary Employment

Ohio nonfarm employment data are derived from an employer survey known as the Current Employment Survey (CES). This survey is conducted monthly by ODJFS/BLMI, in cooperation with the BLS. The data are compiled from voluntary reports from 11,800 Ohio employers. The employer survey provides data on total employment, and on hours and earnings of production workers, by type of industry.

The employer survey does not include the self-employed, unpaid family workers, private household workers, agricultural workers, or those on strike or unpaid vacation and are based on place of work. Analysts generally regard the nonfarm data as the most reliable indicator of the current economic conditions due to its large sample size and the fact that the data are benchmarked annually to the complete count of employment from administrative unemployment insurance records.

Trends in Ohio Nonagricultural Wage and Salary Employment

Goods-producing industries include natural resources and mining, construction, and manufacturing. Service-providing industries include trade, transportation and utilities, information, financial activities, professional and business services, educational and health services, leisure and hospitality, other services, and government.

Web Links for additional information

U.S. Bureau of Labor Statistics site: <http://www.bls.gov>

Ohio Bureau of Labor Market Information site: <http://lmi.state.oh.us>

**Office of Workforce Development
P.O. Box 1618
Columbus, OH 43216-1618**

**Bureau of Labor Market Information
Business Principles for Workforce Development**

Partner with the workforce and economic development community.

Develop and deploy new information solution tools and systems for the workforce and economic development community.

Provide products and services that are customer and demand driven.

Be known as an important and reliable source for information solutions that support workforce development goals and outcomes.

This quarterly report was prepared by the Ohio Department of Job and Family Services to meet the requirements of the Ohio Revised Code 6301.10.

For further information, visit us on the web at <http://lmi.state.oh.us> or <http://OhioWorkforceInformer.org> or contact the Ohio Bureau of Labor Market Information at 1-888-296-7541.

Ted Strickland, **Governor**
State of Ohio

Helen E. Jones-Kelley, **Director**
Ohio Department of Job and Family Services

Office of Workforce Development
Bureau of Labor Market Information
(8/2008)

Equal Opportunity Employer and Service Provider