



Department of Job and Family Services

Mike DeWine, Governor
Jon Husted, Lt. Governor
Matt Damschroder, Director

LABOR MARKET REVIEW

AUGUST 2021

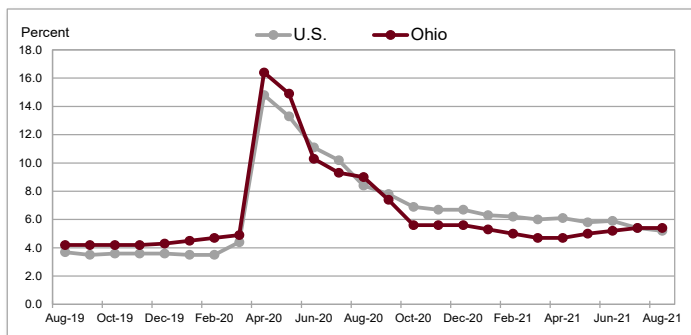
Employment Situation: Ohio and U.S. (Seasonally Adjusted)

Civilian Labor Force

Ohio's unemployment rate was 5.4% in August 2021, unchanged from July. The number of unemployed in Ohio in August was 305,000, up from 300,000 in July. The number of unemployed has decreased by 218,000 in the past 12 months from 523,000. The August unemployment rate for Ohio decreased from 9.0% in August 2020.

The U.S. unemployment rate for August was 5.2%, down from 5.4% in July, and down from 8.4% in August 2020.

Ohio and U.S. Unemployment Rates (Seasonally Adjusted)



Payroll Survey

Over-the-Month Change: Ohio's nonagricultural wage and salary employment decreased 2,400 over the month, from a revised 5,348,300 in July to 5,345,900 in August, according to the latest business establishment survey conducted by the U.S. Department of Labor (Bureau of Labor Statistics) in cooperation with the Ohio Department of Job and Family Services (ODJFS).

Employment in goods-producing industries, at 894,900, increased 400 over the month as gains in manufacturing (+900) and mining and logging (+100) exceeded losses in construction (-600).

The private service-providing sector, at 3,695,800, decreased 2,600 as losses in educational and health services (-4,800), financial activities (-1,600), leisure and hospitality (-1,500), trade, transportation, and utilities (-900), and other services (-700) surpassed gains in professional and business services (+6,300) and information (+600).

Government employment, at 755,200, decreased 200 as losses in state government (-500) outweighed gains in local government (+300). Federal government did not change over the month.

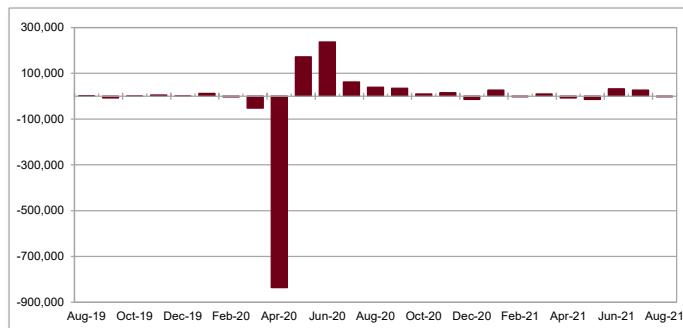
Over-the-Year Change: From August 2020 to August 2021, nonagricultural wage and salary employment increased

113,500. Employment in goods-producing industries increased 19,500. Manufacturing added 13,700 jobs in durable goods (+7,000) and nondurable goods (+6,700). Construction added 5,800 jobs while mining and logging employment did not change over the year.

Employment in the private service-providing sector increased 96,300 with gains in leisure and hospitality (+41,800), trade, transportation, and utilities (+20,400), professional and business services (+19,900), educational and health services (+9,000), information (+3,100), financial activities (+1,900), and other services (+200).

Government employment decreased 2,300 as losses in federal (-10,400) and state (-6,100) government outpaced gains in local government (+14,200).

Ohio Nonfarm Employment Over-the-Month Change (Seasonally Adjusted)



In This Issue

Employment Situation: Ohio and U.S.....	1
Ohio Civilian Labor Force and Nonagricultural Employment Estimates Seasonally Adjusted.....	2
Historical Labor Force Estimates Seasonally Adjusted.....	3
Historical Nonagricultural Employment Seasonally Adjusted.....	4
Ohio Nonagricultural Wage and Salary Employment Not Seasonally Adjusted.....	5
Historical Nonagricultural Employment Not Seasonally Adjusted.....	8
Map of Metropolitan Statistical Areas.....	9
Metropolitan Statistical Areas.....	10
Hours and Earnings of All Employees Not Seasonally Adjusted.....	46
Hours and Earnings of Production and Nonsupervisory Employees Not Seasonally Adjusted.....	47
Selected Unemployment Insurance Activities Not Seasonally Adjusted.....	48
Technical Notes.....	49
Types of Businesses by NAICS.....	51

Ohio

Civilian Labor Force and Nonagricultural Wage and Salary Employment Estimates

Seasonally Adjusted^a

Civilian Labor Force^b

Total	5,638.4	5,604.6	5,803.2	33.8	-164.8	0.6	-2.8
Employment	5,333.2	5,304.2	5,280.3	29.0	52.9	0.5	1.0
Unemployment	305.2	300.4	522.9	4.8	-217.7	1.6	-41.6
Unemployment Rate (%)	5.4	5.4	9.0	0.0	-3.6

Payroll Survey^c

Total Nonagricultural

Total Private

Goods-Producing (Private)

Mining and Logging

Construction

Manufacturing

Durable Goods

Nondurable Goods

Service-Providing (Private)

Trade, Transportation, and Utilities

Wholesale Trade

Retail Trade

Transportation, Warehousing, and Utilities

Information

Financial Activities

Finance and Insurance

Real Estate and Rental and Leasing

Professional and Business Services

Professional and Technical Services

Management of Companies and Enterprises

Administrative, Support, and Waste Services

Educational and Health Services

Educational Services

Health Care and Social Assistance

Leisure and Hospitality

Arts, Entertainment, and Recreation

Accommodation and Food Services

Other Services

Government

Federal Government

State Government

Local Government

	Employment (thousands)			Change (thousands)		Percent Change	
	Aug 2021	Jul 2021	Aug 2020	From Last Month	From Last Year	From Last Month	From Last Year
Total	5,638.4	5,604.6	5,803.2	33.8	-164.8	0.6	-2.8
Employment	5,333.2	5,304.2	5,280.3	29.0	52.9	0.5	1.0
Unemployment	305.2	300.4	522.9	4.8	-217.7	1.6	-41.6
Unemployment Rate (%)	5.4	5.4	9.0	0.0	-3.6
Total Nonagricultural	5,345.9	5,348.3	5,232.4	-2.4	113.5	0.0	2.2
Total Private	4,590.7	4,592.9	4,474.9	-2.2	115.8	0.0	2.6
Goods-Producing (Private)	894.9	894.5	875.4	0.4	19.5	0.0	2.2
Mining and Logging	8.7	8.6	8.7	0.1	0.0	1.2	0.0
Construction	223.6	224.2	217.8	-0.6	5.8	-0.3	2.7
Manufacturing	662.6	661.7	648.9	0.9	13.7	0.1	2.1
Durable Goods	438.1	438.5	431.1	-0.4	7.0	-0.1	1.6
Nondurable Goods	224.5	223.2	217.8	1.3	6.7	0.6	3.1
Service-Providing (Private)	3,695.8	3,698.4	3,599.5	-2.6	96.3	-0.1	2.7
Trade, Transportation, and Utilities	1,029.7	1,030.6	1,009.3	-0.9	20.4	-0.1	2.0
Wholesale Trade	223.2	223.0	222.9	0.2	0.3	0.1	0.1
Retail Trade	546.0	548.1	537.3	-2.1	8.7	-0.4	1.6
Transportation, Warehousing, and Utilities	260.5	259.5	249.1	1.0	11.4	0.4	4.6
Information	65.2	64.6	62.1	0.6	3.1	0.9	5.0
Financial Activities	302.1	303.7	300.2	-1.6	1.9	-0.5	0.6
Finance and Insurance	239.6	239.9	239.1	-0.3	0.5	-0.1	0.2
Real Estate and Rental and Leasing	62.5	63.8	61.1	-1.3	1.4	-2.0	2.3
Professional and Business Services	709.4	703.1	689.5	6.3	19.9	0.9	2.9
Professional and Technical Services	263.5	261.3	260.2	2.2	3.3	0.8	1.3
Management of Companies and Enterprises	139.5	138.4	137.6	1.1	1.9	0.8	1.4
Administrative, Support, and Waste Services	306.4	303.4	291.7	3.0	14.7	1.0	5.0
Educational and Health Services	896.5	901.3	887.5	-4.8	9.0	-0.5	1.0
Educational Services	104.1	111.5	104.6	-7.4	-0.5	-6.6	-0.5
Health Care and Social Assistance	792.4	789.8	782.9	2.6	9.5	0.3	1.2
Leisure and Hospitality	503.2	504.7	461.4	-1.5	41.8	-0.3	9.1
Arts, Entertainment, and Recreation	71.2	72.1	56.0	-0.9	15.2	-1.2	27.1
Accommodation and Food Services	432.0	432.6	405.4	-0.6	26.6	-0.1	6.6
Other Services	189.7	190.4	189.5	-0.7	0.2	-0.4	0.1
Government	755.2	755.4	757.5	-0.2	-2.3	0.0	-0.3
Federal Government	79.1	79.1	89.5	0.0	-10.4	0.0	-11.6
State Government	160.8	161.3	166.9	-0.5	-6.1	-0.3	-3.7
Local Government	515.3	515.0	501.1	0.3	14.2	0.1	2.8

^aData for latest month are preliminary, although other months are subject to revision. Subtotals may not add to totals due to rounding. Unemployment rates are computed from unrounded figures. All data exclude military personnel. ^bData are Local Area Unemployment Statistics estimates based on place of residence.

^cFrom the Current Employment Statistics Survey, a monthly survey of approximately 26,700 employers conducted by the U.S. Bureau of Labor Statistics. Estimates represent nonagricultural wage and salary jobs by place of work.

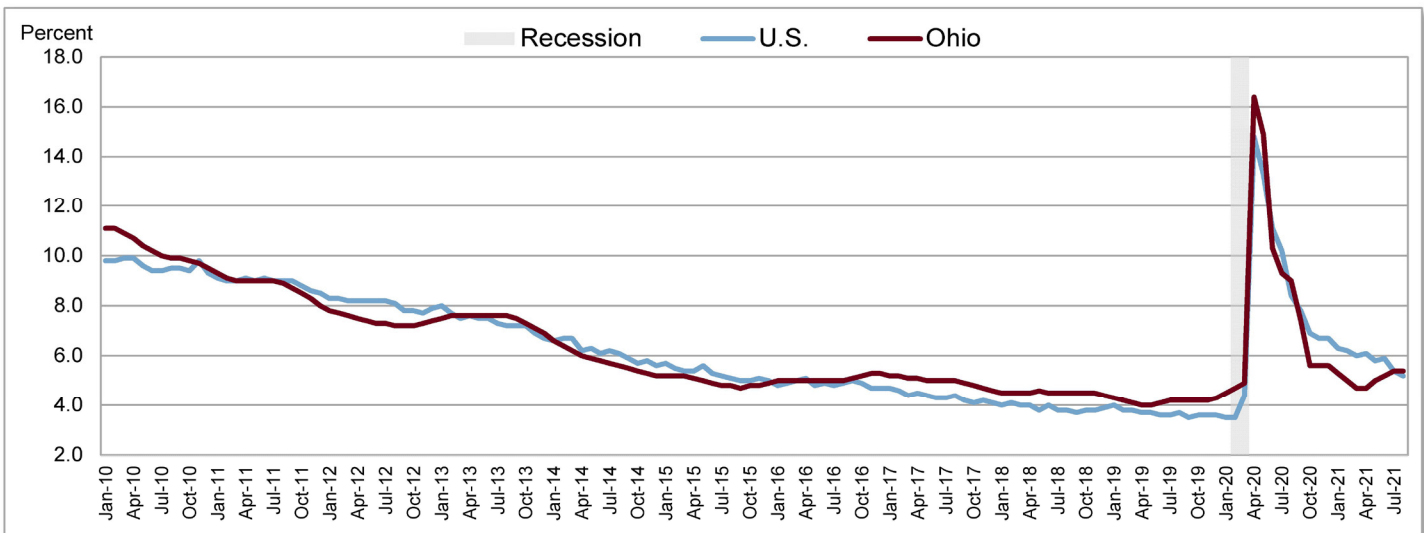
Seasonally adjusted nonfarm employment data for the Ohio Metropolitan Statistical Areas may be accessed at the Bureau of Labor Statistics website at <http://www.bls.gov/sae/>.

Ohio

Historical Civilian Labor Force Estimates Seasonally Adjusted

	Civilian Labor Force (thousands)			Unemployment Rates	
	Total	Employed	Unemployed	Ohio	U.S.
2011	5,773.5	5,263.7	509.8	8.8%	8.9%
2012	5,712.5	5,290.4	422.1	7.4%	8.1%
2013	5,706.8	5,281.5	425.3	7.5%	7.4%
2014	5,713.2	5,381.8	331.4	5.8%	6.2%
2015	5,710.8	5,427.9	282.9	5.0%	5.3%
2016	5,754.5	5,464.1	290.4	5.0%	4.9%
2017	5,796.6	5,508.2	288.4	5.0%	4.4%
2018	5,790.6	5,529.7	260.9	4.5%	3.9%
2019	5,842.2	5,599.0	243.2	4.2%	3.7%
2020	5,754.3	5,285.5	468.8	8.1%	8.1%
2020					
July	5,735.3	5,199.1	536.2	9.3%	10.2%
August	5,803.2	5,280.3	522.9	9.0%	8.4%
September	5,668.8	5,250.4	418.4	7.4%	7.8%
October	5,698.9	5,380.2	318.7	5.6%	6.9%
November	5,732.8	5,413.2	319.6	5.6%	6.7%
December	5,763.3	5,442.6	320.7	5.6%	6.7%
2021					
January	5,768.6	5,462.5	306.1	5.3%	6.3%
February	5,754.8	5,467.1	287.8	5.0%	6.2%
March	5,750.6	5,479.3	271.3	4.7%	6.0%
April	5,767.0	5,494.1	272.9	4.7%	6.1%
May	5,550.7	5,272.5	278.3	5.0%	5.8%
June	5,579.0	5,287.8	291.2	5.2%	5.9%
July	5,604.6	5,304.2	300.4	5.4%	5.4%
August	5,638.4	5,333.2	305.2	5.4%	5.2%

Ohio and U.S. Unemployment Rates (Seasonally Adjusted)



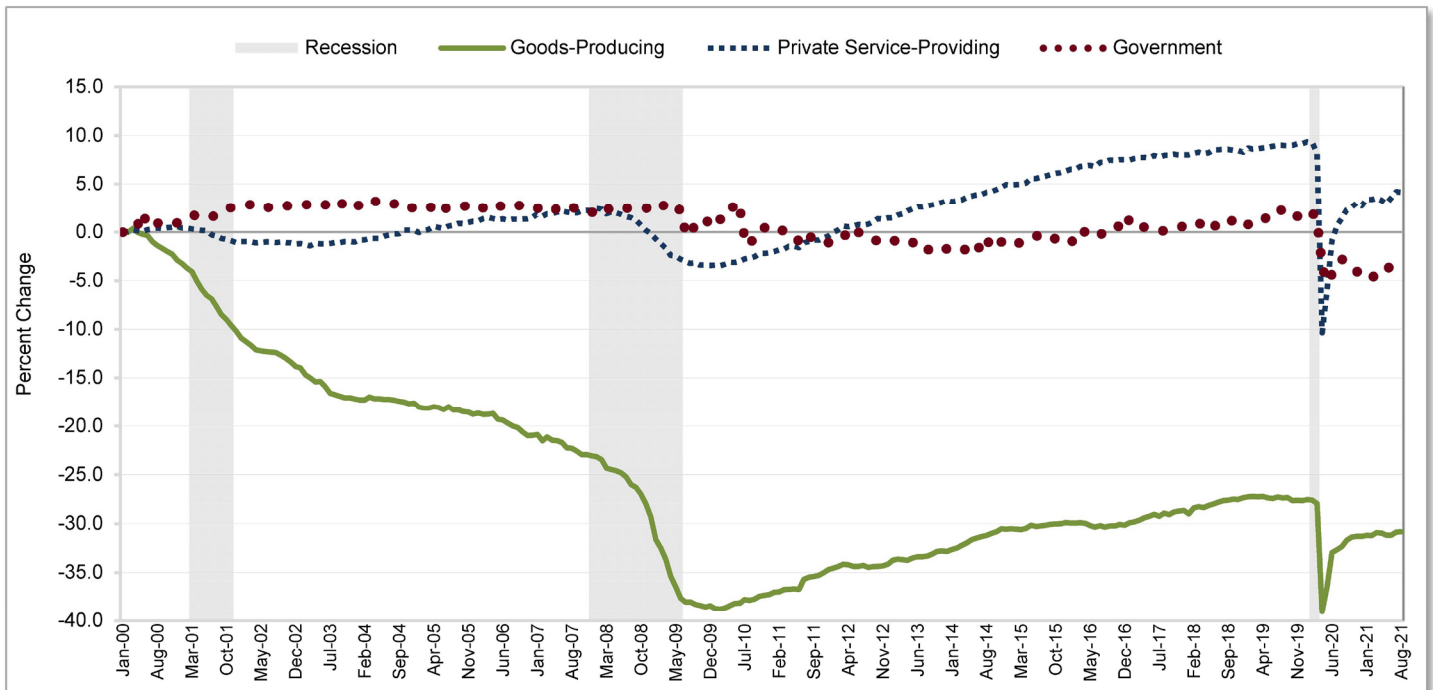
Recessionary periods as defined by the National Bureau of Economic Research (NBER).

Ohio

Historical Nonagricultural Wage and Salary Employment Seasonally Adjusted

	Grand Total	Private Goods-Producing Employment <i>(thousands)</i>				Private Service-Providing Employment <i>(thousands)</i>								Government Employment <i>(thousands)</i>			
		Total	Mining and Logging	Const.	Mfg.	Total	Trade, Transport., and Utilities	Info.	Financial Activities	Prof. and Business Services	Educational and Health Services	Leisure and Hospitality	Other Services	Total	Federal	State	Local
2020																	
July	5,193.2	870.9	8.7	215.0	647.2	3,572.9	1,003.7	61.8	299.6	681.7	883.6	455.1	187.4	749.4	80.7	170.1	498.6
August	5,232.4	875.4	8.7	217.8	648.9	3,599.5	1,009.3	62.1	300.2	689.5	887.5	461.4	189.5	757.5	89.5	166.9	501.1
September	5,267.2	883.8	8.7	220.1	655.0	3,630.8	1,015.2	63.4	300.8	693.6	892.6	471.3	193.9	752.6	88.2	159.7	504.7
October	5,277.3	887.6	8.5	220.2	658.9	3,641.0	1,019.5	62.7	302.4	693.1	895.7	473.1	194.5	748.7	82.6	161.1	505.0
November	5,292.3	888.8	9.0	221.0	658.8	3,655.9	1,025.6	62.6	304.2	696.9	896.5	478.8	191.3	747.6	79.8	160.4	507.4
December	5,277.8	888.9	9.1	222.2	657.6	3,646.0	1,028.4	62.6	306.1	696.2	890.9	470.3	191.5	742.9	79.4	159.9	503.6
2021																	
January	5,304.3	890.0	9.1	223.2	657.7	3,669.7	1,030.7	63.0	307.9	697.0	899.6	480.9	190.6	744.6	79.4	160.3	504.9
February	5,302.2	889.7	8.9	223.6	657.2	3,669.5	1,030.7	63.2	308.2	698.1	892.0	486.5	190.8	743.0	79.2	159.9	503.9
March	5,312.0	893.6	8.9	225.7	659.0	3,674.0	1,030.1	63.2	308.4	701.8	895.0	485.0	190.5	744.4	79.4	159.2	505.8
April	5,304.0	893.0	8.8	225.6	658.6	3,666.4	1,025.7	63.2	308.0	701.0	895.8	483.3	189.4	744.6	79.2	158.8	506.6
May	5,289.5	890.5	8.6	224.7	657.2	3,653.4	1,018.0	63.6	305.7	700.0	893.9	482.6	189.6	745.6	79.0	158.1	508.5
June	5,321.7	890.3	8.6	223.3	658.4	3,676.0	1,026.2	63.9	304.9	699.1	897.0	494.8	190.1	755.4	78.8	161.5	515.1
July	5,348.3	894.5	8.6	224.2	661.7	3,698.4	1,030.6	64.6	303.7	703.1	901.3	504.7	190.4	755.4	79.1	161.3	515.0
August	5,345.9	894.9	8.7	223.6	662.6	3,695.8	1,029.7	65.2	302.1	709.4	896.5	503.2	189.7	755.2	79.1	160.8	515.3

Percent Change in Ohio Nonfarm Employment by Month January 2000 - August 2021 (Seasonally Adjusted)



Recessionary periods as defined by the National Bureau of Economic Research (NBER).

Note: In June 2015 the seasonal model for state government employment was updated to account for improved data collection. To preserve the continuity of the time series, the updated seasonal factors were applied back to October 2014. The series affected are state government, total government, and total nonfarm employment. If you have any questions about the updates, please email ContactLMI@jfs.ohio.gov.

Ohio

Nonagricultural

Wage and Salary Employment^a

Not Seasonally Adjusted

	Employment (thousands)			Change (thousands)		Percent Change	
	Aug 2021 ^b	Jul 2021 ^c	Aug 2020 ^c	From Last Month	From Last Year	From Last Month	From Last Year
Total Nonagricultural	5,374.2	5,376.3	5,243.6	-2.1	130.6	0.0	2.5
Total Private	4,646.6	4,650.0	4,519.2	-3.4	127.4	-0.1	2.8
Goods-Producing (Private)	912.0	912.1	890.0	-0.1	22.0	0.0	2.5
Mining, Logging, and Construction	247.9	248.9	239.1	-1.0	8.8	-0.4	3.7
Mining and Logging	8.9	8.8	9.0	0.1	-0.1	1.1	-1.1
Construction	239.0	240.1	230.1	-1.1	8.9	-0.5	3.9
Construction of Buildings	53.4	54.3	48.7	-0.9	4.7	-1.7	9.7
Nonresidential Building Construction	29.3	29.7	27.2	-0.4	2.1	-1.3	7.7
Heavy and Civil Engineering Construction	31.5	31.6	33.1	-0.1	-1.6	-0.3	-4.8
Specialty Trade Contractors	154.1	154.2	148.3	-0.1	5.8	-0.1	3.9
Manufacturing	664.1	663.2	650.9	0.9	13.2	0.1	2.0
Durable Goods ^d	439.6	439.1	431.9	0.5	7.7	0.1	1.8
Nonmetallic Mineral Product Manufacturing	25.5	25.5	25.8	0.0	-0.3	0.0	-1.2
Primary Metal Manufacturing	32.9	32.9	33.2	0.0	-0.3	0.0	-0.9
Fabricated Metal Product Manufacturing	96.5	96.7	90.5	-0.2	6.0	-0.2	6.6
Machine Shops and Threaded Products	23.4	23.4	22.8	0.0	0.6	0.0	2.6
Machinery Manufacturing	74.0	73.5	73.1	0.5	0.9	0.7	1.2
Metalworking Machinery Manufacturing	20.8	20.8	20.3	0.0	0.5	0.0	2.5
Computer and Electronic Product Manufacturing	20.6	20.9	20.5	-0.3	0.1	-1.4	0.5
Electrical Equipment, Appliance, and Component Mfg.	24.2	24.3	25.0	-0.1	-0.8	-0.4	-3.2
Household Appliance Manufacturing	10.0	10.0	9.6	0.0	0.4	0.0	4.2
Transportation Equipment Manufacturing	116.0	114.9	115.6	1.1	0.4	1.0	0.3
Motor Vehicle Manufacturing	22.2	21.2	21.3	1.0	0.9	4.7	4.2
Motor Vehicle Parts Manufacturing	66.4	64.8	67.6	1.6	-1.2	2.5	-1.8
Aerospace Product and Parts Manufacturing	14.2	14.4	16.7	-0.2	-2.5	-1.4	-15.0
Furniture and Related Product Manufacturing	14.3	14.6	14.7	-0.3	-0.4	-2.1	-2.7
Nondurable Goods ^e	224.5	224.1	219.0	0.4	5.5	0.2	2.5
Food Manufacturing	59.9	59.7	59.0	0.2	0.9	0.3	1.5
Printing and Related Support Activities	18.3	18.3	18.0	0.0	0.3	0.0	1.7
Chemical Manufacturing	47.5	47.3	45.7	0.2	1.8	0.4	3.9
Plastics and Rubber Products Manufacturing	54.8	54.9	54.6	-0.1	0.2	-0.2	0.4
Plastics Product Manufacturing	43.1	43.1	42.3	0.0	0.8	0.0	1.9
Rubber Product Manufacturing	11.7	11.8	12.3	-0.1	-0.6	-0.8	-4.9
Service-Providing (Private)	3,734.6	3,737.9	3,629.2	-3.3	105.4	-0.1	2.9
Trade, Transportation, and Utilities	1,027.7	1,030.1	1,006.6	-2.4	21.1	-0.2	2.1
Wholesale Trade	224.5	224.6	224.0	-0.1	0.5	0.0	0.2
Merchant Wholesalers, Durable Goods	138.6	137.1	134.0	1.5	4.6	1.1	3.4
Professional and Commercial Equipment	29.0	28.9	28.3	0.1	0.7	0.3	2.5
Machinery, Equipment, and Supplies	34.4	34.1	34.0	0.3	0.4	0.9	1.2
Merchant Wholesalers, Nondurable Goods	72.6	73.2	73.2	-0.6	-0.6	-0.8	-0.8

- continued on next page -

Ohio**Nonagricultural****Wage and Salary Employment^a****Not Seasonally Adjusted***- continued -*

	Employment (thousands)			Change (thousands)		Percent Change	
	Aug 2021 ^b	Jul 2021 ^c	Aug 2020 ^c	From Last Month	From Last Year	From Last Month	From Last Year
Retail Trade	545.2	548.5	534.7	-3.3	10.5	-0.6	2.0
Motor Vehicle and Parts Dealers	79.1	78.5	74.7	0.6	4.4	0.8	5.9
Automobile Dealers	47.7	47.4	46.5	0.3	1.2	0.6	2.6
Furniture and Home Furnishings Stores	12.6	12.5	11.8	0.1	0.8	0.8	6.8
Building Material and Garden Supply Stores	55.8	57.8	56.2	-2.0	-0.4	-3.5	-0.7
Building Material and Supplies Dealers	47.8	49.4	48.7	-1.6	-0.9	-3.2	-1.8
Food and Beverage Stores	101.1	102.9	101.3	-1.8	-0.2	-1.7	-0.2
Grocery Stores	87.8	89.5	90.4	-1.7	-2.6	-1.9	-2.9
Health and Personal Care Stores	33.7	34.0	33.9	-0.3	-0.2	-0.9	-0.6
Gasoline Stations	38.0	38.1	35.6	-0.1	2.4	-0.3	6.7
Clothing and Clothing Accessories Stores	28.8	28.8	28.7	0.0	0.1	0.0	0.3
General Merchandise Stores	106.4	106.6	107.6	-0.2	-1.2	-0.2	-1.1
Miscellaneous Store Retailers	32.0	32.6	27.4	-0.6	4.6	-1.8	16.8
Transportation, Warehousing, and Utilities	258.0	257.0	247.9	1.0	10.1	0.4	4.1
Utilities	17.7	18.1	18.3	-0.4	-0.6	-2.2	-3.3
Transportation and Warehousing	240.3	238.9	229.6	1.4	10.7	0.6	4.7
Air Transportation	10.0	9.9	9.8	0.1	0.2	1.0	2.0
Truck Transportation	73.5	73.4	70.8	0.1	2.7	0.1	3.8
Information	65.4	64.8	62.6	0.6	2.8	0.9	4.5
Publishing Industries, Except Internet	18.9	18.9	18.9	0.0	0.0	0.0	0.0
Telecommunications	21.1	20.9	21.0	0.2	0.1	1.0	0.5
Financial Activities	304.9	306.8	302.5	-1.9	2.4	-0.6	0.8
Finance and Insurance	239.8	240.5	239.6	-0.7	0.2	-0.3	0.1
Credit Intermediation and Related Activities	91.8	92.4	95.1	-0.6	-3.3	-0.6	-3.5
Depository Credit Intermediation	62.3	62.7	63.5	-0.4	-1.2	-0.6	-1.9
Insurance Carriers and Related Activities	126.0	125.2	124.2	0.8	1.8	0.6	1.4
Insurance Carriers	78.8	79.0	78.9	-0.2	-0.1	-0.3	-0.1
Real Estate and Rental and Leasing	65.1	66.3	62.9	-1.2	2.2	-1.8	3.5
Professional and Business Services	721.9	714.6	697.4	7.3	24.5	1.0	3.5
Professional, Scientific, and Technical Services	264.5	263.2	259.9	1.3	4.6	0.5	1.8
Legal Services	30.4	30.6	30.4	-0.2	0.0	-0.7	0.0
Accounting and Bookkeeping Services	27.9	27.5	28.5	0.4	-0.6	1.5	-2.1
Architectural and Engineering Services	42.8	42.8	41.3	0.0	1.5	0.0	3.6
Computer Systems Design and Related Services	67.6	66.2	64.2	1.4	3.4	2.1	5.3
Management and Technical Consulting Services	33.2	33.0	34.2	0.2	-1.0	0.6	-2.9
Advertising and Related Services	11.6	11.4	11.2	0.2	0.4	1.8	3.6
Management of Companies and Enterprises	140.4	139.8	138.9	0.6	1.5	0.4	1.1
Administrative, Support, and Waste Services	317.0	311.6	298.6	5.4	18.4	1.7	6.2
Administrative and Support Services	299.5	294.1	281.1	5.4	18.4	1.8	6.5
Employment Services	132.7	126.5	113.5	6.2	19.2	4.9	16.9
Business Support Services	32.2	32.0	32.5	0.2	-0.3	0.6	-0.9
Services to Buildings and Dwellings	75.4	77.2	75.7	-1.8	-0.3	-2.3	-0.4

- continued on next page -

Ohio

Nonagricultural

Wage and Salary Employment^a

Not Seasonally Adjusted

- continued -

	Employment (thousands)			Change (thousands)		Percent Change	
	Aug 2021 ^b	Jul 2021 ^c	Aug 2020 ^c	From Last Month	From Last Year	From Last Month	From Last Year
Educational and Health Services	888.1	887.5	882.8	0.6	5.3	0.1	0.6
Educational Services	90.5	95.3	96.9	-4.8	-6.4	-5.0	-6.6
Colleges, Universities, and Professional Schools	42.7	44.4	49.7	-1.7	-7.0	-3.8	-14.1
Health Care and Social Assistance	797.6	792.2	785.9	5.4	11.7	0.7	1.5
Hospitals	254.1	253.0	249.8	1.1	4.3	0.4	1.7
Nursing and Residential Care Facilities	147.7	147.1	154.3	0.6	-6.6	0.4	-4.3
Social Assistance	117.7	115.5	112.4	2.2	5.3	1.9	4.7
Leisure and Hospitality	536.0	541.9	486.0	-5.9	50.0	-1.1	10.3
Arts, Entertainment, and Recreation	89.1	95.0	72.2	-5.9	16.9	-6.2	23.4
Amusement, Gambling, and Recreation Industries	64.1	69.5	58.7	-5.4	5.4	-7.8	9.2
Accommodation and Food Services	446.9	446.9	413.8	0.0	33.1	0.0	8.0
Accommodation	34.6	33.9	27.0	0.7	7.6	2.1	28.1
Food Services and Drinking Places	412.3	413.0	386.8	-0.7	25.5	-0.2	6.6
Other Services	190.6	192.2	191.3	-1.6	-0.7	-0.8	-0.4
Repair and Maintenance	46.2	46.7	47.5	-0.5	-1.3	-1.1	-2.7
Personal and Laundry Services	48.0	48.3	49.3	-0.3	-1.3	-0.6	-2.6
Membership Associations and Organizations	96.4	97.2	94.5	-0.8	1.9	-0.8	2.0
Government	727.6	726.3	724.4	1.3	3.2	0.2	0.4
Federal Government	79.2	79.1	89.6	0.1	-10.4	0.1	-11.6
U.S. Postal Service	22.5	22.2	22.5	0.3	0.0	1.4	0.0
State Government	146.9	145.7	150.7	1.2	-3.8	0.8	-2.5
State Government Educational ^f Services	73.9	72.3	76.8	1.6	-2.9	2.2	-3.8
State Government, Excluding Education	73.0	73.4	73.9	-0.4	-0.9	-0.5	-1.2
State Government Hospitals	18.8	18.9	19.8	-0.1	-1.0	-0.5	-5.1
Local Government	501.5	501.5	484.1	0.0	17.4	0.0	3.6
Local Government Educational Services	261.5	259.6	252.5	1.9	9.0	0.7	3.6
Local Government, Excluding Education	240.0	241.9	231.6	-1.9	8.4	-0.8	3.6
Local Government Hospitals	11.6	11.6	11.5	0.0	0.1	0.0	0.9

^aSee Technical Notes for concepts. ^bPreliminary. ^cRevised. ^dIncludes wood products; miscellaneous manufacturing. ^eIncludes textile mills; textile products mills; apparel manufacturing; leather and allied products; petroleum and coal products. ^fIncludes state universities, state schools for the deaf and blind, and the state library. Excludes the agricultural extension service and agricultural research centers.

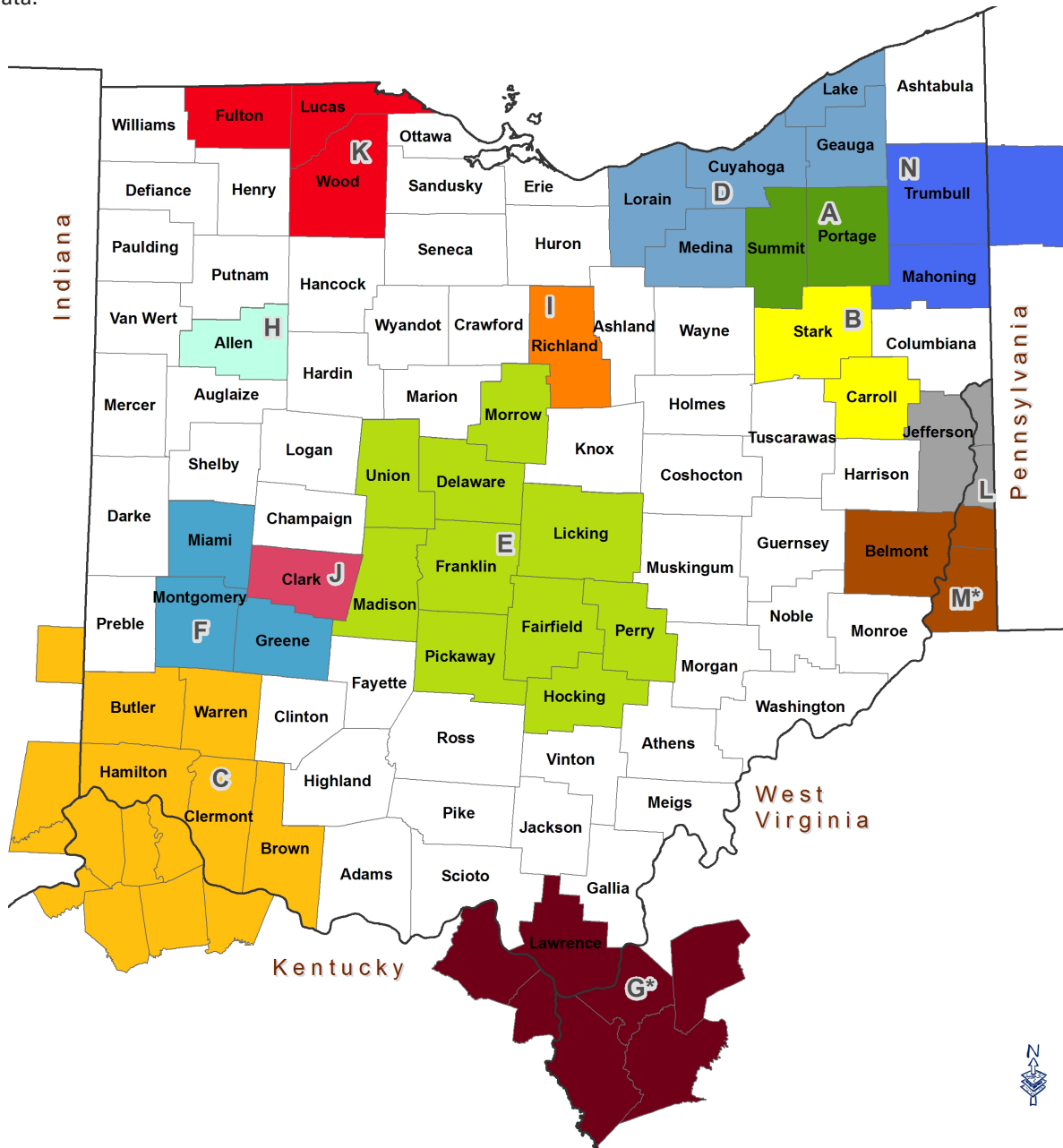
Ohio

Historical Nonagricultural Wage and Salary Employment Not Seasonally Adjusted

	Grand Total	Private Goods-Producing Employment (thousands)				Private Service-Providing Employment (thousands)								Government Employment (thousands)			
		Total	Mining and Logging	Const.	Mfg.	Total	Trade, Transport, and Utilities	Info.	Financial Activities	Prof. and Business Services	Educational and Health Services	Leisure and Hospitality	Other Services	Total	Federal	State	Local
2011	5,107.9	826.9	11.3	176.1	639.4	3,504.9	954.9	76.2	278.0	655.3	849.7	483.5	207.4	776.1	80.3	169.2	526.6
2012	5,201.6	849.6	11.4	181.1	657.1	3,577.4	969.7	75.1	280.0	677.4	862.4	500.7	211.9	774.7	78.2	173.5	522.9
2013	5,266.8	862.3	12.5	186.0	663.7	3,637.0	978.8	75.3	284.4	693.2	875.6	517.9	211.8	767.5	76.5	172.3	518.7
2014	5,344.0	886.4	14.9	195.7	675.8	3,689.2	992.2	72.6	288.2	713.3	886.3	526.7	209.9	768.4	75.8	175.4	517.2
2015	5,423.6	902.3	14.1	200.5	687.7	3,748.2	1,009.0	71.8	293.5	720.3	901.3	539.6	212.6	773.2	76.4	178.1	518.7
2016	5,481.0	903.5	11.3	206.1	686.1	3,800.0	1,017.8	72.2	300.7	727.6	915.5	552.1	214.1	777.6	77.5	179.7	520.4
2017	5,525.8	915.6	11.4	217.1	687.1	3,827.1	1,021.5	71.9	306.1	726.8	925.1	560.7	215.0	783.0	78.3	179.9	524.8
2018	5,562.6	931.8	12.2	220.8	698.9	3,845.0	1,024.2	70.9	308.1	730.9	930.6	566.8	213.5	785.8	78.6	178.8	528.4
2019	5,594.6	939.3	11.8	226.7	700.8	3,864.0	1,028.7	69.5	308.0	734.9	939.3	570.4	213.2	791.3	79.6	179.9	531.8
2020	5,253.9	881.2	9.4	218.9	652.9	3,613.5	1,004.1	63.8	302.4	693.7	895.2	465.5	188.9	759.2	81.7	168.0	509.5
2019																	
January	5,486.7	918.3	11.7	204.9	701.7	3,791.9	1,022.7	69.6	305.8	717.6	932.2	534.2	209.8	776.5	78.4	172.8	525.3
February	5,503.1	917.6	11.7	202.8	703.1	3,789.4	1,008.3	69.9	305.9	718.6	938.7	537.7	210.3	796.1	78.9	184.9	532.3
March	5,525.8	923.1	12.1	209.8	701.2	3,801.6	1,008.4	69.6	305.2	719.0	939.3	548.6	211.5	801.1	78.9	187.9	534.3
April	5,585.1	935.2	12.2	222.4	700.6	3,843.6	1,011.7	69.3	306.3	735.0	941.5	567.1	212.7	806.3	79.1	189.4	537.8
May	5,629.8	945.6	12.2	231.7	701.7	3,883.8	1,020.6	69.7	308.3	738.6	941.8	590.5	214.3	800.4	79.3	176.2	544.9
June	5,629.2	956.3	12.1	238.1	706.1	3,899.9	1,024.3	70.0	310.2	742.9	933.7	602.3	216.5	773.0	79.4	164.8	528.8
July	5,614.2	956.4	12.2	239.0	705.2	3,898.5	1,026.5	70.0	311.2	744.8	929.4	600.8	215.8	759.3	79.7	164.0	515.6
August	5,619.7	954.6	12.1	239.3	703.2	3,900.1	1,026.7	69.5	310.5	744.9	934.9	598.8	214.8	765.0	80.8	166.7	517.5
September	5,602.3	947.3	11.8	237.4	698.1	3,862.7	1,021.0	68.7	307.8	736.8	938.6	577.6	212.2	792.3	80.5	187.0	524.8
October	5,640.3	943.6	11.5	238.3	693.8	3,885.8	1,036.3	69.1	308.2	743.0	945.2	570.2	213.8	810.9	79.9	190.3	540.7
November	5,659.8	940.6	11.0	232.4	697.2	3,907.2	1,065.3	69.5	308.1	743.5	948.9	558.6	213.3	812.0	80.2	188.2	543.6
December	5,639.3	932.9	10.7	224.2	698.0	3,904.0	1,073.1	69.4	308.2	734.2	947.1	558.8	213.2	802.4	80.4	186.0	536.0
2020																	
January	5,517.5	914.9	10.3	211.2	693.4	3,815.9	1,029.3	68.2	305.9	717.1	942.0	542.5	210.9	786.7	79.9	177.2	529.6
February	5,532.3	913.4	10.2	210.8	692.4	3,816.3	1,018.5	68.3	306.0	717.9	947.8	546.6	211.2	802.6	79.7	186.6	536.3
March	5,497.2	914.2	10.2	214.0	690.0	3,784.0	1,016.1	67.8	305.1	712.7	942.1	535.9	204.3	799.0	79.9	184.0	535.1
April	4,721.0	782.0	9.6	191.4	581.0	3,171.3	895.9	61.4	296.1	647.0	831.4	296.6	142.9	767.7	80.0	178.1	509.6
May	4,930.5	826.5	9.5	215.4	601.6	3,355.4	955.8	61.6	298.2	660.8	851.6	363.3	164.1	748.6	79.9	164.2	504.5
June	5,164.6	884.9	9.3	225.8	649.8	3,552.0	992.1	62.0	301.1	679.2	871.4	463.0	183.2	727.7	80.1	152.7	494.9
July	5,205.9	886.2	9.0	227.9	649.3	3,603.3	1,002.3	62.2	302.4	687.9	874.8	483.1	190.6	716.4	80.7	151.1	484.6
August	5,243.6	890.0	9.0	230.1	650.9	3,629.2	1,006.6	62.6	302.5	697.4	882.8	486.0	191.3	724.4	89.6	150.7	484.1
September	5,271.2	891.0	8.9	229.4	652.7	3,627.1	1,005.8	63.0	300.2	695.1	892.5	477.5	193.0	753.1	88.2	165.7	499.2
October	5,321.1	896.0	8.7	230.1	657.2	3,661.8	1,021.4	63.1	302.3	705.4	903.1	472.4	194.1	763.3	82.5	168.9	511.9
November	5,340.0	891.8	9.0	225.5	657.3	3,681.9	1,047.2	62.9	303.2	707.5	905.7	464.7	190.7	766.3	80.0	169.0	517.3
December	5,302.0	883.6	9.0	214.9	659.7	3,663.5	1,057.7	62.5	305.9	696.0	896.7	453.9	190.8	754.9	80.4	167.9	506.6
2021																	
January	5,194.4	867.3	8.8	202.3	656.2	3,593.5	1,023.6	62.7	305.2	676.2	891.5	445.8	188.5	733.6	79.3	156.2	498.1
February	5,219.9	865.6	8.5	199.8	657.3	3,602.2	1,016.4	62.8	305.6	677.7	896.5	454.4	188.8	752.1	78.8	167.9	505.4
March	5,254.4	876.9	8.8	208.5	659.6	3,618.8	1,015.5	62.8	305.7	683.6	900.5	461.4	189.3	758.7	78.8	169.8	510.1
April	5,295.6	886.8	8.8	222.2	655.8	3,648.0	1,017.0	62.9	306.2	694.4	902.5	476.6	188.4	760.8	79.2	169.6	512.0
May	5,324.7	897.4	8.7	231.9	656.8	3,674.2	1,015.1	63.5	306.0	703.7	895.6	499.7	190.6	753.1	78.7	156.6	517.8
June	5,368.2	908.7	8.7	236.1	663.9	3,720.2	1,028.0	64.3	308.1	709.9	887.2	529.3	193.4	739.3	78.7	145.9	514.7
July	5,376.3	912.1	8.8	240.1	663.2	3,737.9	1,030.1	64.8	306.8	714.6	887.5	541.9	192.2	726.3	79.1	145.7	501.5
August	5,374.2	912.0	8.9	239.0	664.1	3,734.6	1,027.7	65.4	304.9	721.9	888.1	536.0	190.6	727.6	79.2	146.9	501.5

Ohio Metropolitan Statistical Areas (MSAs)

Developed by the United States Office of Management and Budget, Metropolitan Statistical Areas are integrated geographic regions comprised of at least one city or urban area (with a population of at least 50,000) and adjacent communities. Metropolitan Statistical Areas make it possible for federal statistical agencies to utilize the same boundaries when publishing statistical data.



- | | | |
|---|---|--|
| A. Akron MSA | F. Dayton MSA | L. Weirton-Staubenville MSA,
including Brooke and Hancock Counties
in West Virginia |
| B. Canton-Massillon MSA | G. *Huntington-Ashland MSA,
including Boyd and Greenup Counties in
Kentucky; Cabell, Lincoln, Putnam, and
Wayne Counties in West Virginia | M. *Wheeling MSA, including
Marshall and Ohio Counties in West
Virginia |
| C. Cincinnati MSA,
including Dearborn, Ohio, and Union
Counties in Indiana; Boone, Bracken,
Campbell, Gallatin, Grant, Kenton, and
Pendleton Counties in
Kentucky | H. Lima MSA | N. Youngstown-Warren-Boardman MSA,
including Mercer County in
Pennsylvania |
| D. Cleveland-Elyria MSA | I. Mansfield MSA | |
| E. Columbus MSA | J. Springfield MSA | |
| | K. Toledo MSA | |

*Data on West Virginia MSAs may be viewed at <http://lmi.workforcewv.org>.

Akron Metropolitan Statistical Area Not Seasonally Adjusted

Portage and Summit Counties

Over-the-Month Change: Nonfarm payroll employment in the Akron metropolitan area totaled 325,800 in August 2021, an increase of 700 jobs from July. Employment in the goods-producing sector, at 53,500, decreased 400 with losses in mining, logging, and construction (-200) and manufacturing (-200). Employment in the private service-providing sector, at 234,400, increased 700 as gains in educational and health services (+1,500) and professional and business services (+200) exceeded losses in trade, transportation, and utilities (-800) and financial activities (-200). Government employment, at 37,900, increased 400 with gains in local (+300) and federal (+100) government. State government did not change over the month.

Over-the-Year Change: Nonagricultural wage and salary employment increased 10,300 from August 2020 to August 2021. Goods-producing industries increased 2,200 with gains in manufacturing (+1,200) and mining, logging, and construction (+1,000). Private service-providing employment increased 7,500 with gains in leisure and hospitality (+3,200), educational and health services (+2,200), financial activities (+800), trade, transportation, and utilities (+400), information (+300), professional and business services (+300), and other services (+300). Government employment increased 600 as gains in local (+900) and state (+200) government surpassed losses in federal government (-500).



Civilian Labor Force (thousands)			Unemployment Rate
Total	Employed	Unemployed	
365.0	332.0	33.0	9.0%
360.5	333.7	26.7	7.4%
358.6	331.3	27.3	7.6%
360.0	338.8	21.2	5.9%
359.7	341.8	18.0	5.0%
361.0	342.5	18.5	5.1%
362.1	343.8	18.3	5.1%
359.3	342.6	16.6	4.6%
361.8	346.2	15.5	4.3%
356.2	327.7	28.5	8.0%
2020			
359.3	323.1	36.2	10.1%
362.8	329.3	33.5	9.2%
356.2	329.9	26.3	7.4%
349.4	332.9	16.5	4.7%
352.2	336.0	16.2	4.6%
351.0	333.3	17.7	5.0%
2021			
350.7	329.3	21.4	6.1%
354.1	332.8	21.2	6.0%
355.1	335.7	19.4	5.5%
355.4	337.6	17.8	5.0%
339.8	322.1	17.8	5.2%
343.4	321.5	22.0	6.4%
347.6	326.3	21.3	6.1%
351.1	332.6	18.5	5.3%

2011
2012
2013
2014
2015
2016
2017
2018
2019
2020
2020
July
August
September
October
November
December
2021
January
February
March
April
May
June
July
August

Nonagricultural Wage and Salary Employment (thousands)					
Total	Mfg.	Trade, Transport., and Utilities	Professional and Business Services	Educational and Health Services	Government
320.8	38.9	62.3	48.9	50.6	48.7
325.2	40.1	63.7	49.7	51.1	48.8
326.6	39.9	64.1	50.2	51.6	48.0
332.8	40.1	65.3	51.7	53.0	47.1
337.8	40.4	66.4	52.6	54.5	46.4
340.1	39.6	66.6	53.6	55.3	46.1
340.9	39.3	66.9	53.2	55.3	45.7
339.9	39.4	67.2	51.1	55.2	44.7
340.6	39.7	67.3	50.0	56.2	44.4
319.1	36.9	66.3	46.6	53.6	41.5
2020					
312.9	36.3	66.2	46.0	52.4	36.8
315.5	36.2	66.5	46.8	52.9	37.3
319.8	36.4	66.5	46.7	53.3	41.2
320.6	36.8	66.9	47.2	53.7	41.6
324.0	36.9	67.7	47.5	53.8	41.6
322.7	37.5	69.4	46.7	53.2	41.3
2021					
315.1	37.5	67.0	45.9	53.8	38.6
318.0	37.4	66.6	46.1	53.3	41.2
319.2	37.5	66.6	46.4	53.5	41.8
321.3	37.0	66.4	46.4	53.6	41.7
324.3	37.2	66.5	46.3	53.0	41.9
323.3	37.5	67.8	46.2	52.2	37.8
325.1	37.6	67.7	46.9	53.6	37.5
325.8	37.4	66.9	47.1	55.1	37.9

Akron MSA

Nonagricultural Wage and Salary Employment^a

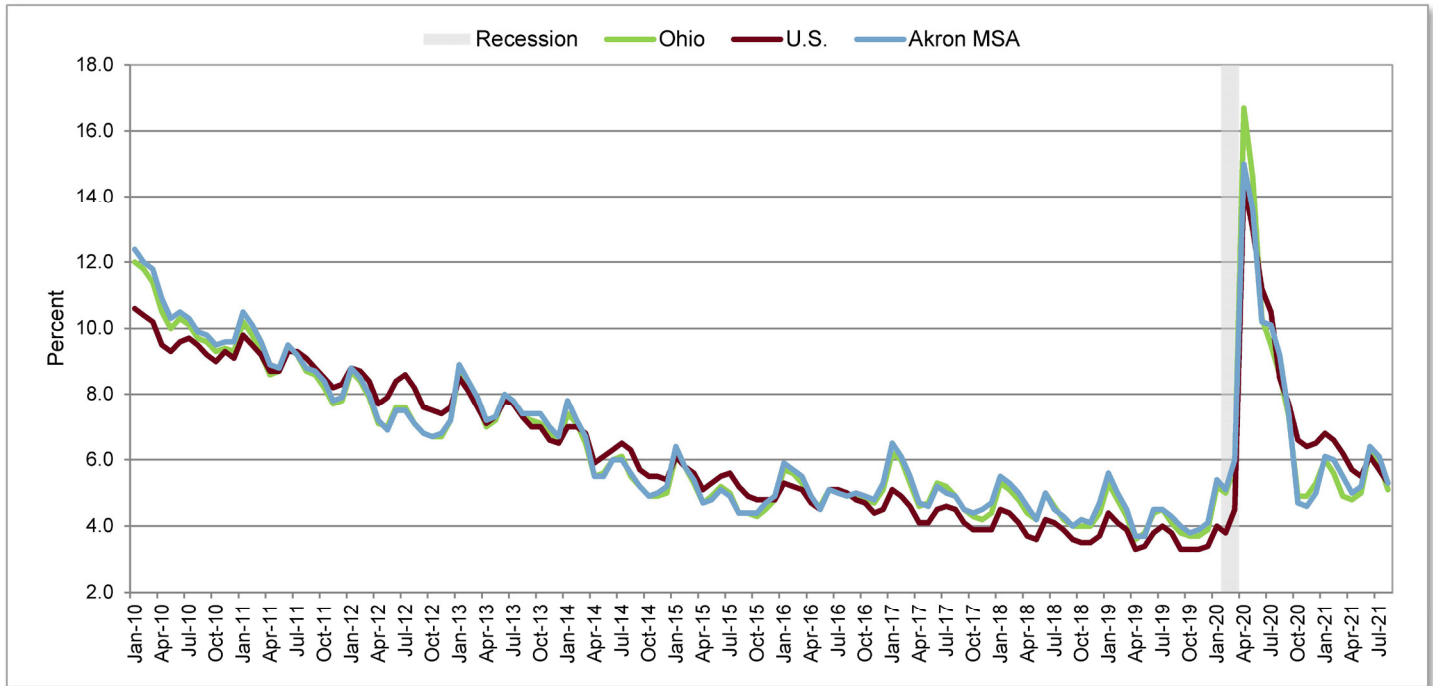
Not Seasonally Adjusted

	Employment (thousands)			Change (thousands)		Percent Change	
	Aug 2021 ^b	Jul 2021 ^c	Aug 2020 ^c	From Last Month	From Last Year	From Last Month	From Last Year
Total Nonagricultural	325.8	325.1	315.5	0.7	10.3	0.2	3.3
Total Private	287.9	287.6	278.2	0.3	9.7	0.1	3.5
Goods-Producing (Private)	53.5	53.9	51.3	-0.4	2.2	-0.7	4.3
Mining, Logging, and Construction	16.1	16.3	15.1	-0.2	1.0	-1.2	6.6
Manufacturing	37.4	37.6	36.2	-0.2	1.2	-0.5	3.3
Durable Goods ^d	20.5	20.7	20.3	-0.2	0.2	-1.0	1.0
Nondurable Goods ^e	16.9	16.9	15.9	-0.2	0.2	0.0	6.3
Service-Providing (Private)	234.4	233.7	226.9	0.7	7.5	0.3	3.3
Trade, Transportation, and Utilities	66.9	67.7	66.5	-0.8	0.4	-1.2	0.6
Wholesale Trade	16.9	16.9	16.8	0.0	0.1	0.0	0.6
Retail Trade	34.7	35.6	35.0	-0.9	-0.3	-2.5	-0.9
Food and Beverage Stores	6.7	6.9	6.9	-0.2	-0.2	-2.9	-2.9
Health and Personal Care Stores	2.1	2.1	2.1	0.0	0.0	0.0	0.0
General Merchandise Stores	5.8	6.0	6.2	-0.2	-0.4	-3.3	-6.5
Transportation, Warehousing, and Utilities	15.3	15.2	14.7	0.1	0.6	0.7	4.1
Truck Transportation	6.0	5.9	5.7	0.1	0.3	1.7	5.3
Information	4.9	4.9	4.6	0.0	0.3	0.0	6.5
Financial Activities	16.1	16.3	15.3	-0.2	0.8	-1.2	5.2
Finance and Insurance	12.8	13.1	11.9	-0.3	0.9	-2.3	7.6
Professional and Business Services	47.1	46.9	46.8	0.2	0.3	0.4	0.6
Administrative, Support and Waste Services	16.7	16.3	16.9	0.4	-0.2	2.5	-1.2
Educational and Health Services	55.1	53.6	52.9	1.5	2.2	2.8	4.2
Health Care and Social Assistance	49.3	48.3	48.8	1.0	0.5	2.1	1.0
Leisure and Hospitality	31.9	31.9	28.7	0.0	3.2	0.0	11.1
Accommodation and Food Services	26.9	26.4	24.6	0.5	2.3	1.9	9.3
Other Services	12.4	12.4	12.1	0.0	0.3	0.0	2.5
Government	37.9	37.5	37.3	0.4	0.6	1.1	1.6
Federal Government	2.3	2.2	2.8	0.1	-0.5	4.5	-17.9
State Government	9.1	9.1	8.9	0.0	0.2	0.0	2.2
State Government Educational ^f Services	7.2	7.0	7.1	0.2	0.1	2.9	1.4
Local Government	26.5	26.2	25.6	0.3	0.9	1.1	3.5
Local Government Educational Services	12.7	12.4	12.5	0.3	0.2	2.4	1.6

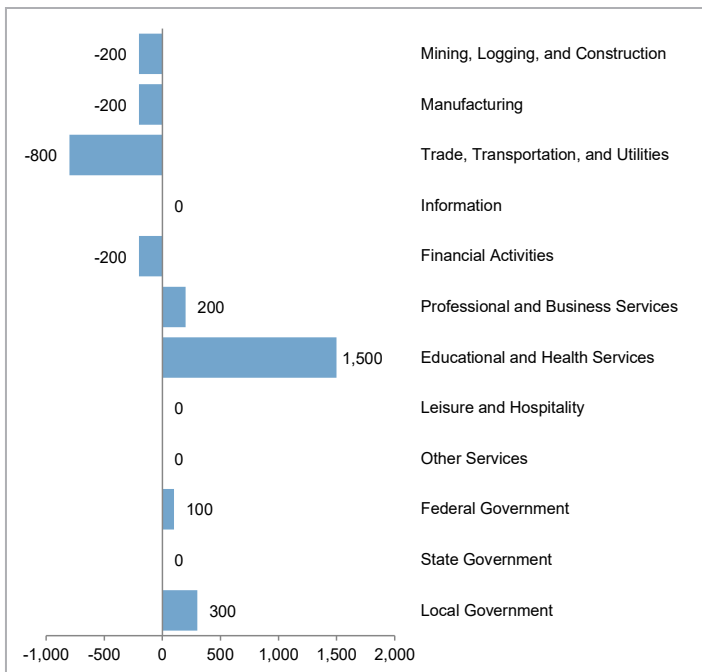
^aSee Technical Notes for concepts. ^bPreliminary. ^cRevised. ^dIncludes wood products; nonmetallic mineral products; primary metals; fabricated metal products; machinery manufacturing; computer and electronic products; electrical equipment and appliance manufacturing; furniture and related products; miscellaneous manufacturing. ^eIncludes food manufacturing; beverage and tobacco products; textile mills; textile product mills; apparel manufacturing; leather and allied products; paper manufacturing; printing and related support activities; petroleum and coal products; chemical manufacturing. ^fIncludes state universities. Excludes the agricultural extension service.

Akron Metropolitan Statistical Area Not Seasonally Adjusted

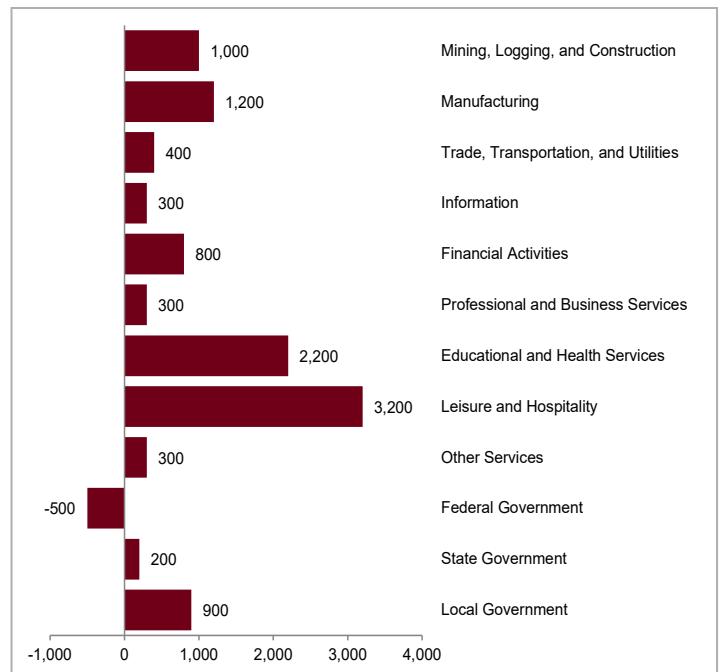
Unemployment Rates



Akron MSA Over-the-Month Change



Akron MSA Over-the-Year Change



Canton-Massillon Metropolitan Statistical Area Not Seasonally Adjusted

Carroll and Stark Counties

Over-the-Month Change: Nonfarm payroll employment in the Canton-Massillon metropolitan area totaled 166,000 in August 2021, an increase of 100 jobs from July. The goods-producing sector, at 33,900, decreased 200 with losses in mining, logging, and construction (-100) and manufacturing (-100). Employment in private service-providing industries, at 114,000, increased 400 as gains in professional and business services (+200), educational and health services (+200), and trade, transportation, and utilities (+100) surpassed losses in other services (-100). Government employment, at 18,100, decreased 100 as losses in local government (-200) outpaced gains in federal government (+100). State government employment did not change over the month.



Over-the-Year Change: Nonagricultural wage and salary employment increased 3,600 from August 2020 to August 2021. The goods-producing sector increased 700 with gains in mining, logging, and construction (+400) and manufacturing (+300). Private service-providing employment increased 3,500 as gains in leisure and hospitality (+1,600), trade, transportation, and utilities (+1,300), professional and business services (+800), other services (+200), and information (+100) exceeded losses in educational and health services (-500). Government employment decreased 600 with losses in local (-400) and federal (-200) government. State government employment did not change over the year.

Civilian Labor Force (thousands)			Unemployment Rate
Total	Employed	Unemployed	
202.8	183.7	19.0	9.4%
201.8	186.6	15.1	7.5%
202.6	187.3	15.3	7.6%
202.4	190.6	11.8	5.8%
200.6	189.8	10.8	5.4%
200.7	189.5	11.2	5.6%
201.1	190.6	10.5	5.2%
199.5	189.7	9.8	4.9%
199.7	190.5	9.2	4.6%
197.0	181.0	16.0	8.1%
199.1	179.6	19.5	9.8%
200.9	183.1	17.8	8.9%
196.1	182.2	13.9	7.1%
194.1	185.2	8.8	4.6%
194.5	185.7	8.8	4.5%
194.9	185.2	9.7	5.0%
195.6	183.8	11.7	6.0%
196.8	184.8	12.0	6.1%
197.8	187.0	10.7	5.4%
197.4	187.1	10.3	5.2%
187.9	177.9	10.0	5.3%
191.2	179.0	12.2	6.4%
192.4	180.6	11.7	6.1%
194.1	184.1	10.1	5.2%

2011
2012
2013
2014
2015
2016
2017
2018
2019
2020
 2020
 July
 August
 September
 October
 November
 December
2021
 January
 February
 March
 April
 May
 June
 July
 August

Nonagricultural Wage and Salary Employment (thousands)					
Total	Mfg.	Trade, Transport., and Utilities	Professional and Business Services	Educational and Health Services	Government
202.8	26.2	29.8	14.0	31.6	20.5
201.8	27.3	30.6	14.0	32.5	20.3
202.6	28.1	30.7	14.4	33.0	20.1
202.4	28.4	31.1	14.7	33.0	20.0
200.6	28.6	31.5	14.2	32.7	19.9
200.7	27.4	31.8	15.0	32.9	20.0
201.1	26.7	31.3	15.9	33.4	20.4
199.5	26.9	31.1	15.8	33.7	20.2
199.7	26.7	31.1	16.3	33.5	20.1
197.0	25.2	30.3	15.3	31.4	19.6
199.1	24.9	30.2	15.2	30.4	18.5
200.9	24.8	30.6	15.3	31.1	18.7
196.1	24.7	30.3	15.3	30.8	19.4
194.1	24.9	31.0	15.7	31.2	19.4
194.5	24.9	31.5	15.7	31.2	19.4
194.9	25.4	31.9	15.8	31.2	19.5
195.6	25.2	30.8	15.5	31.1	18.9
196.8	25.3	30.8	15.6	31.0	19.2
197.8	25.5	31.2	15.5	30.9	19.2
197.4	25.4	31.1	15.7	31.0	19.0
187.9	25.3	31.6	15.8	30.7	18.8
191.2	25.5	31.9	15.8	30.3	19.0
192.4	25.2	31.8	15.9	30.4	18.2
194.1	25.1	31.9	16.1	30.6	18.1

Canton-Massillon MSA

Nonagricultural Wage and Salary Employment^a

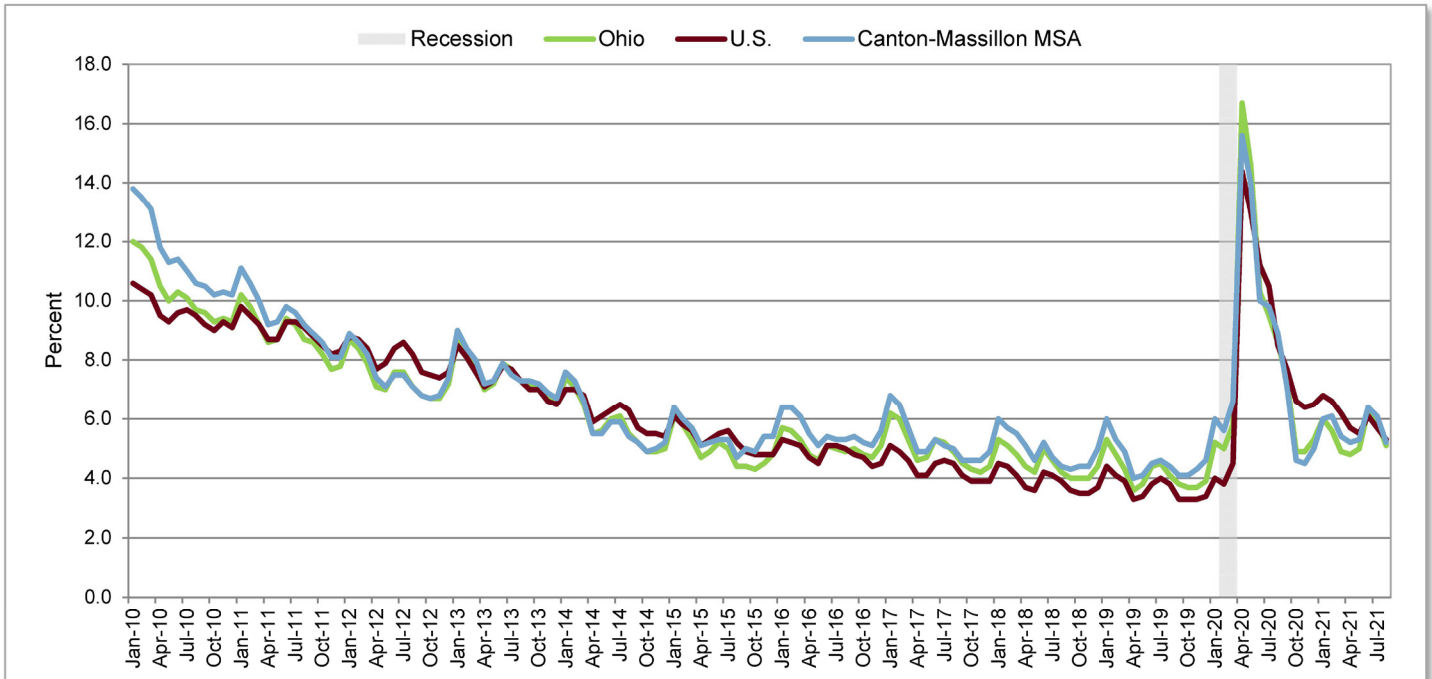
Not Seasonally Adjusted

	Employment (thousands)			Change (thousands)		Percent Change	
	Aug 2021 ^b	Jul 2021 ^c	Aug 2020 ^c	From Last Month	From Last Year	From Last Month	From Last Year
Total Nonagricultural	166.0	165.9	162.4	0.1	3.6	0.1	2.2
Total Private	147.9	147.7	143.7	0.2	4.2	0.1	2.9
Goods-Producing (Private)	33.9	34.1	33.2	-0.2	0.7	-0.6	2.1
Mining, Logging, and Construction	8.8	8.9	8.4	-0.1	0.4	-1.1	4.8
Manufacturing	25.1	25.2	24.8	-0.1	0.3	-0.4	1.2
Food Manufacturing	5.3	5.3	5.4	0.0	-0.1	0.0	-1.9
Service-Providing (Private)	114.0	113.6	110.5	0.4	3.5	0.4	3.2
Trade, Transportation, and Utilities	31.9	31.8	30.6	0.1	1.3	0.3	4.2
Wholesale Trade	7.0	7.1	6.7	-0.1	0.3	-1.4	4.5
Retail Trade	20.1	19.9	19.2	0.2	0.9	1.0	4.7
General Merchandise Stores	4.0	3.9	4.0	0.1	0.0	2.6	0.0
Transportation, Warehousing, and Utilities	4.8	4.8	4.7	0.0	0.1	0.0	2.1
Information	1.4	1.4	1.3	0.0	0.1	0.0	7.7
Financial Activities	7.2	7.2	7.2	0.0	0.0	0.0	0.0
Professional and Business Services	16.1	15.9	15.3	0.2	0.8	1.3	5.2
Educational and Health Services	30.6	30.4	31.1	0.2	-0.5	0.7	-1.6
Health Care and Social Assistance	27.6	27.4	27.8	0.2	-0.2	0.7	-0.7
Leisure and Hospitality	19.1	19.1	17.5	0.0	1.6	0.0	9.1
Accommodation and Food Services	16.4	16.4	15.4	0.0	1.0	0.0	6.5
Other Services	7.7	7.8	7.5	-0.1	0.2	-1.3	2.7
Government	18.1	18.2	18.7	-0.1	-0.6	-0.5	-3.2
Federal Government	1.1	1.0	1.3	0.1	-0.2	10.0	-15.4
State Government	1.2	1.2	1.2	0.0	0.0	0.0	0.0
Local Government	15.8	16.0	16.2	-0.2	-0.4	-1.3	-2.5
Local Government Educational Services	9.3	9.5	9.5	-0.2	-0.2	-2.1	-2.1

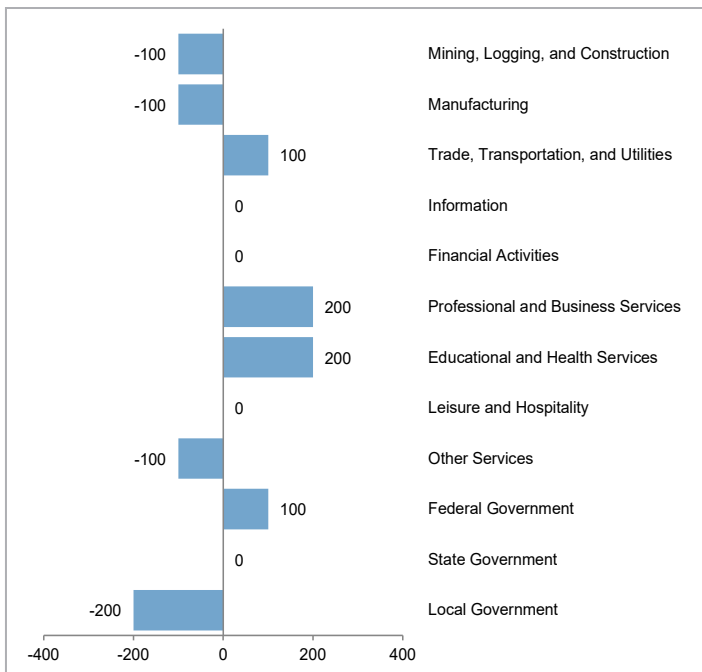
^aSee Technical Notes for concepts. ^bPreliminary. ^cRevised.

Canton-Massillon Metropolitan Statistical Area Not Seasonally Adjusted

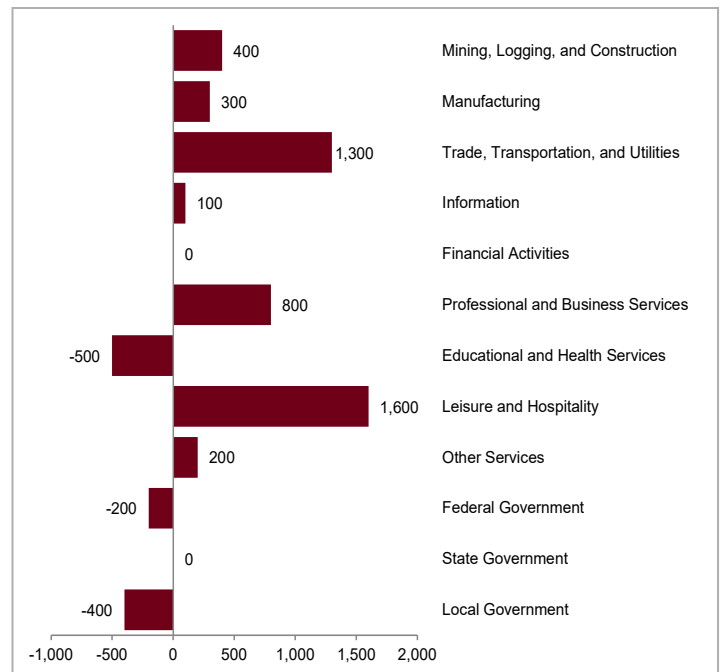
Unemployment Rates



Canton-Massillon MSA Over-the-Month Change



Canton-Massillon MSA Over-the-Year Change



Cincinnati Metropolitan Statistical Area Not Seasonally Adjusted

In Ohio: Brown, Butler, Clermont, Hamilton, and Warren Counties

In Indiana: Dearborn, Ohio, and Union Counties

In Kentucky: Boone, Bracken, Campbell, Gallatin, Grant, Kenton, and Pendleton Counties



Over-the-Month Change: Nonfarm payroll employment in the Cincinnati metropolitan area totaled 1,097,000 in August 2021, an increase of 2,500 jobs from July. Employment in goods-producing industries, at 160,400, decreased 1,000 as losses in mining, logging, and construction (-1,500) exceeded gains in manufacturing (+500). Employment in the private service-providing sector, at 815,400, increased 100 as gains in professional and business services (+5,400) and educational and health services (+600) surpassed losses in leisure and hospitality (-3,600), financial activities (-1,400), and other services (-900). Trade, transportation, and utilities and information did not change over the month. Government employment, at 121,200, increased 3,400 as gains in local (+2,800) and state (+700) government outpaced losses in federal government (-100).

Over-the-Year Change: Nonagricultural wage and salary employment increased 44,000 from August 2020 to August 2021. Employment in the goods-producing sector decreased 1,300 with losses in mining, logging, and construction (-1,000) and manufacturing (-300). Private service-providing employment increased 48,400 as gains in professional and business services (+19,500), educational and health services (+10,800), leisure and hospitality (+9,500), trade, transportation, and utilities (+7,200), other services (+2,700), and information (+400) exceeded losses in financial activities (-1,700). Government employment decreased 3,100 as losses in state (-2,100) and federal (-1,900) government outpaced gains in local government (+900).

Civilian Labor Force (thousands)			Unemployment Rate
Total	Employed	Unemployed	
1,084.5	988.6	95.9	8.8%
1,077.0	997.1	79.9	7.4%
1,078.8	1,000.8	78.1	7.2%
1,077.3	1,018.1	59.2	5.5%
1,080.1	1,031.2	48.9	4.5%
1,094.8	1,046.9	47.9	4.4%
1,112.0	1,064.6	47.4	4.3%
1,119.4	1,075.3	44.1	3.9%
1,135.5	1,093.4	42.2	3.7%
1,118.1	1,039.9	78.2	7.0%
1,130.2	1,032.9	97.2	8.6%
1,140.1	1,050.1	90.0	7.9%
1,118.6	1,046.1	72.5	6.5%
1,107.0	1,057.9	49.1	4.4%
1,105.4	1,057.2	48.2	4.4%
1,103.1	1,052.4	50.7	4.6%
1,100.7	1,042.6	58.1	5.3%
1,106.6	1,050.8	55.7	5.0%
1,108.8	1,061.9	47.0	4.2%
1,122.5	1,076.8	45.7	4.1%
1,083.1	1,036.8	46.4	4.3%
1,109.1	1,047.6	61.5	5.5%
1,119.3	1,060.6	58.7	5.2%
1,126.2	1,076.4	49.8	4.4%

2011
2012
2013
2014
2015
2016
2017
2018
2019
2020
2020
July
August
September
October
November
December
2021
January
February
March
April
May
June
July
August

Nonagricultural Wage and Salary Employment (thousands)					
Total	Mfg.	Trade, Transport., and Utilities	Professional and Business Services	Educational and Health Services	Government
992.9	104.1	196.5	154.6	149.4	130.4
1,009.4	105.4	199.4	160.8	152.3	129.7
1,025.6	106.1	200.6	163.4	156.3	130.3
1,042.9	110.1	202.8	166.8	159.5	130.3
1,061.8	113.2	206.8	168.1	161.5	130.3
1,080.9	114.7	210.6	168.5	163.2	131.1
1,095.8	116.6	213.6	168.7	164.8	131.6
1,108.8	118.6	219.6	170.2	166.6	131.3
1,119.8	120.3	220.7	172.1	169.8	132.4
1,054.7	113.7	212.8	165.5	163.8	127.8
1,044.1	112.9	210.3	163.1	159.6	120.6
1,053.0	112.7	211.3	165.3	160.8	124.3
1,058.8	113.0	212.3	165.2	163.3	128.3
1,068.0	112.7	215.4	169.7	166.8	129.5
1,066.2	112.0	220.4	169.3	168.5	127.8
1,064.9	111.9	225.6	168.2	169.0	125.7
1,042.8	111.7	214.5	161.9	168.8	123.7
1,048.0	112.3	212.8	162.2	168.6	126.1
1,057.3	112.4	215.6	165.4	169.8	127.3
1,070.9	111.6	216.0	171.6	170.0	127.7
1,078.6	111.6	216.0	172.8	170.3	124.7
1,092.0	112.3	218.1	176.7	169.9	121.1
1,094.5	111.9	218.5	179.4	171.0	117.8
1,097.0	112.4	218.5	184.8	171.6	121.2

Cincinnati MSA

Nonagricultural Wage and Salary Employment^a

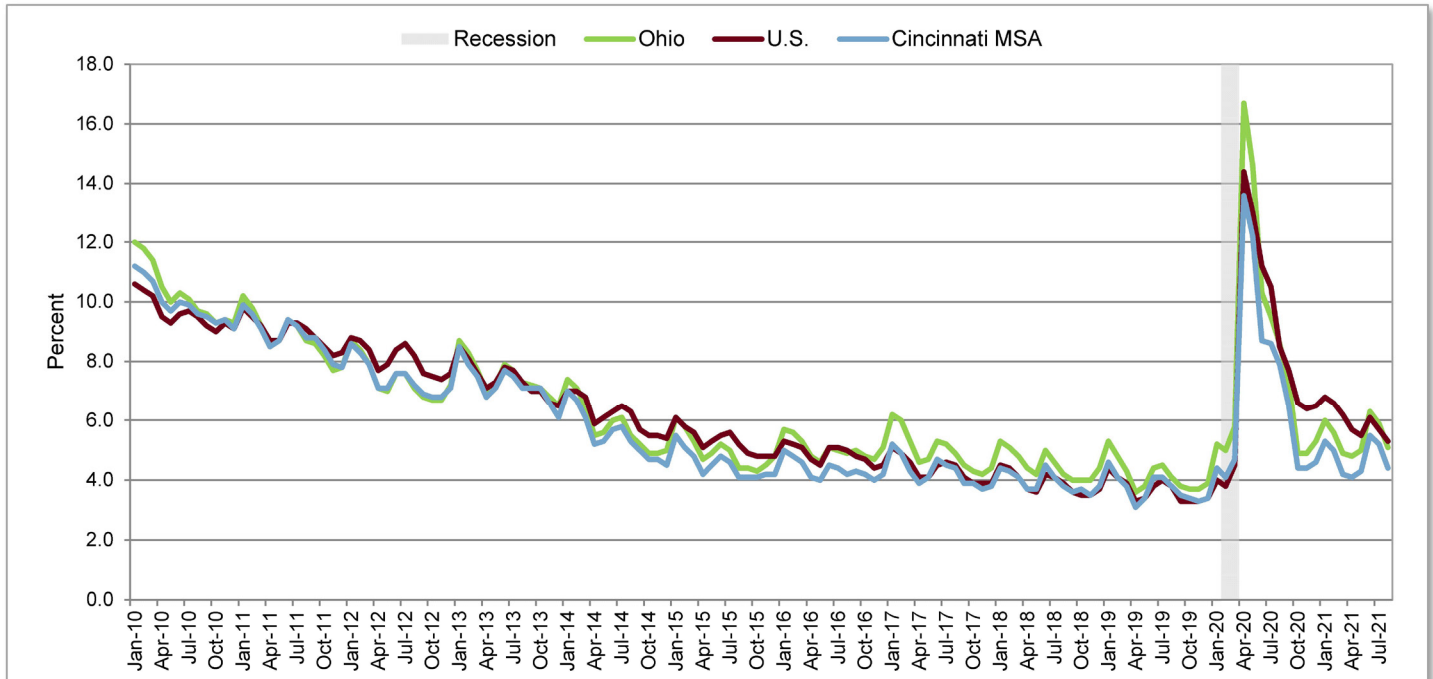
Not Seasonally Adjusted

	Employment (thousands)			Change (thousands)		Percent Change	
	Aug 2021 ^b	Jul 2021 ^c	Aug 2020 ^c	From Last Month	From Last Year	From Last Month	From Last Year
Total Nonfarm	1,097.0	1,094.5	1,053.0	2.5	44.0	0.2	4.2
Total Private	975.8	976.7	928.7	-0.9	47.1	-0.1	5.1
Goods-Producing (Private)	160.4	161.4	161.7	-1.0	-1.3	-0.6	-0.8
Mining, Logging, and Construction	48.0	49.5	49.0	-1.5	-1.0	-3.0	-2.0
Construction of Buildings	9.4	9.6	9.6	-0.2	-0.2	-2.1	-2.1
Specialty Trade Contractors	32.5	33.4	32.8	-0.9	-0.3	-2.7	-0.9
Manufacturing	112.4	111.9	112.7	0.5	-0.3	0.4	-0.3
Durable Goods ^d	65.9	65.4	64.3	0.5	1.6	0.8	2.5
Transportation Equipment	21.4	21.1	20.8	0.3	0.6	1.4	2.9
Motor Vehicle Parts	10.3	9.8	9.6	0.5	0.7	5.1	7.3
Nondurable Goods ^e	46.5	46.5	48.4	0.0	-1.9	0.0	-3.9
Chemical Manufacturing	12.7	12.7	12.3	0.0	0.4	0.0	3.3
Service-Providing (Private)	815.4	815.3	767.0	0.1	48.4	0.0	6.3
Trade, Transportation, and Utilities	218.5	218.5	211.3	0.0	7.2	0.0	3.4
Wholesale Trade	56.9	57.6	56.0	-0.7	0.9	-1.2	1.6
Merchant Wholesalers, Durable Goods	32.2	32.0	31.4	0.2	0.8	0.6	2.5
Merchant Wholesalers, Nondurable Goods	19.9	20.2	20.4	-0.3	-0.5	-1.5	-2.5
Retail Trade	104.7	104.6	101.4	0.1	3.3	0.1	3.3
Food and Beverage Stores	20.1	20.3	19.5	-0.2	0.6	-1.0	3.1
Grocery Stores	17.2	17.5	17.3	-0.3	-0.1	-1.7	-0.6
Health and Personal Care Stores	6.1	6.1	5.8	0.0	0.3	0.0	5.2
Clothing and Clothing Accessories Stores	6.6	6.6	6.2	0.0	0.4	0.0	6.5
General Merchandise Stores	19.3	19.2	19.3	0.1	0.0	0.5	0.0
Transportation, Warehousing, and Utilities	56.9	56.3	53.9	0.6	3.0	1.1	5.6
Transportation and Warehousing	54.3	53.7	51.4	0.6	2.9	1.1	5.6
Air Transportation	2.2	2.2	2.5	0.0	-0.3	0.0	-12.0
Information	13.3	13.3	12.9	0.0	0.4	0.0	3.1
Financial Activities	71.7	73.1	73.4	-1.4	-1.7	-1.9	-2.3
Finance and Insurance	56.5	57.5	59.3	-1.0	-2.8	-1.7	-4.7
Credit Intermediation and Related Activities	25.0	25.2	25.6	-0.2	-0.6	-0.8	-2.3
Insurance Carriers and Related Activities	26.7	26.8	26.5	-0.1	0.2	-0.4	0.8
Professional and Business Services	184.8	179.4	165.3	5.4	19.5	3.0	11.8
Professional, Scientific, and Technical Services	63.6	62.3	61.5	1.3	2.1	2.1	3.4
Management of Companies and Enterprises	39.1	38.9	39.2	0.2	-0.1	0.5	-0.3
Administrative, Support and Waste Services	82.1	78.2	64.6	3.9	17.5	5.0	27.1
Employment Services	33.0	31.4	27.4	1.6	5.6	5.1	20.4
Services to Buildings and Dwellings	15.8	16.2	15.7	-0.4	0.1	-2.5	0.6
Educational and Health Services	171.6	171.0	160.8	0.6	10.8	0.4	6.7
Educational Services	13.3	14.1	13.9	-0.8	-0.6	-5.7	-4.3
Health Care and Social Assistance	158.3	156.9	146.9	1.4	11.4	0.9	7.8
Hospitals	53.0	52.9	51.3	0.1	1.7	0.2	3.3
Leisure and Hospitality	116.4	120.0	106.9	-3.6	9.5	-3.0	8.9
Arts, Entertainment, and Recreation	26.9	28.8	21.9	-1.9	5.0	-6.6	22.8
Accommodation and Food Services	89.5	91.2	85.0	-1.7	4.5	-1.9	5.3
Other Services	39.1	40.0	36.4	-0.9	2.7	-2.3	7.4
Government	121.2	117.8	124.3	3.4	-3.1	2.9	-2.5
Federal Government	14.0	14.1	15.9	-0.1	-1.9	-0.7	-11.9
State Government	26.1	25.4	28.2	0.7	-2.1	2.8	-7.4
State Government Educational ^f Services	21.5	20.7	23.0	0.8	-1.5	3.9	-6.5
Local Government	81.1	78.3	80.2	2.8	0.9	3.6	1.1
Local Government Educational Services	45.1	41.4	44.1	3.7	1.0	8.9	2.3

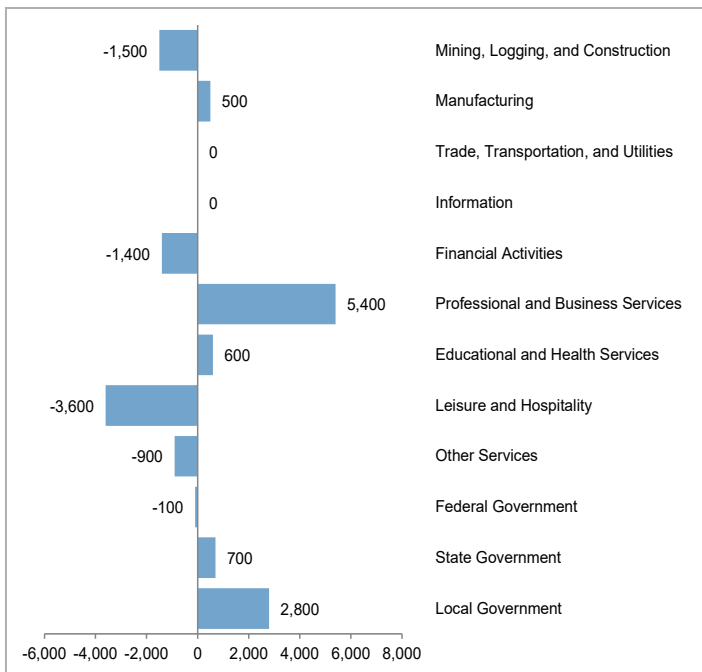
^aSee Technical Notes for concepts. ^bPreliminary. ^cRevised. ^dIncludes wood products; nonmetallic mineral products; primary metals; fabricated metal products; machinery manufacturing; computer and electronic products; electrical equipment and appliance manufacturing; furniture and related products; miscellaneous manufacturing. ^eIncludes food manufacturing; beverage and tobacco products; textile mills; textile product mills; apparel manufacturing; leather and allied products; paper manufacturing; printing and related support activities; petroleum and coal products; chemical manufacturing. ^fIncludes state universities. Excludes the agricultural extension service.

Cincinnati Metropolitan Statistical Area Not Seasonally Adjusted

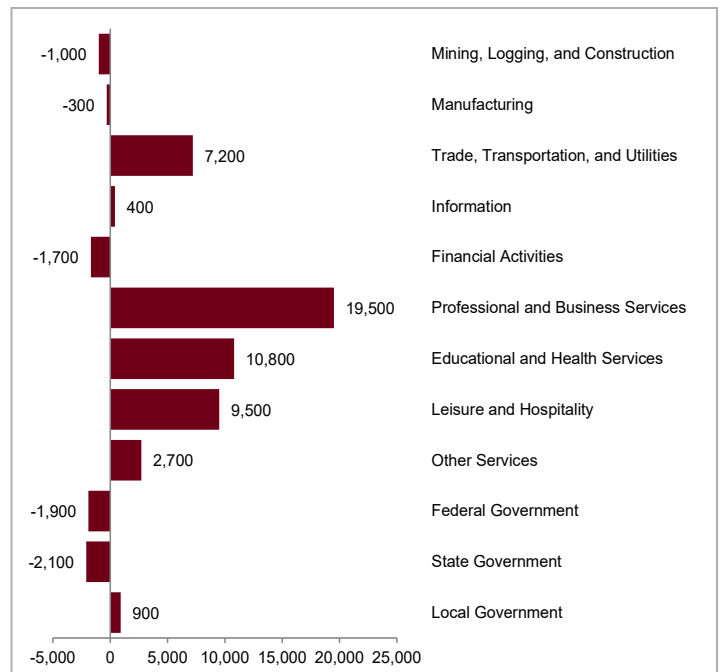
Unemployment Rates



Cincinnati MSA Over-the-Month Change



Cincinnati MSA Over-the-Year Change



Cleveland-Elyria Metropolitan Statistical Area Not Seasonally Adjusted

Cuyahoga, Geauga, Lake, Lorain, and Medina Counties

Over-the-Month Change: Nonfarm payroll employment in the Cleveland-Elyria metropolitan area totaled 1,014,100 in August 2021, a decrease of 4,900 jobs from July. Goods-producing industries, at 153,700, increased 500 as gains in manufacturing (+1,500) exceeded losses in mining, logging, and construction (-1,000). Private service-providing employment, at 733,600, decreased 4,900 as losses in leisure and hospitality (-2,700), educational and health services (-1,000), other services (-800), and trade, transportation, and utilities (-600) surpassed gains in financial activities (+100) and professional and business services (+100). Information did not change over the month. Government employment, at 126,800, decreased 500 in local government. Federal and state government employment did not change over the month.



Over-the-Year Change: Nonagricultural wage and salary employment increased 16,600 from August 2020 to August 2021. Goods-producing industries increased 2,000 as gains in mining, logging, and construction (+2,500) surpassed losses in manufacturing (-500). Employment in private service-providing industries increased 12,700 as gains in leisure and hospitality (+9,000), professional and business services (+5,300), financial activities (+1,500), and information (+700) outpaced losses in other services (-2,900), educational and health services (-600), and trade, transportation, and utilities (-300). Government employment increased 1,900 as gains in local government (+3,800) exceeded losses in federal government (-1,900). State government employment did not change over the year.

Civilian Labor Force (thousands)			Unemployment Rate
Total	Employed	Unemployed	
1,055.8	978.2	77.6	7.4%
1,039.7	971.3	68.4	6.6%
1,036.2	965.3	70.9	6.8%
1,034.0	971.6	62.4	6.0%
1,025.7	974.1	51.7	5.0%
1,033.9	978.2	55.7	5.4%
1,042.4	984.5	58.0	5.6%
1,042.7	993.7	49.0	4.7%
1,050.2	1,007.0	43.2	4.1%
1,002.5	905.7	96.8	9.7%
994.7	903.5	91.2	9.2%
990.5	910.7	79.8	8.1%
904.6	824.9	79.7	8.8%
993.2	921.6	71.6	7.2%
1,006.8	935.8	71.0	7.1%
997.6	921.3	76.3	7.6%
1,007.9	934.5	73.4	7.3%
975.5	928.2	47.3	4.8%
982.4	935.1	47.3	4.8%
1,005.8	959.6	46.2	4.6%
999.8	948.7	51.0	5.1%
1,023.8	957.2	66.6	6.5%
1,036.1	975.4	60.7	5.9%
1,004.7	951.3	53.4	5.3%

2011
2012
2013
2014
2015
2016
2017
2018
2019
2020
 July
 August
 September
 October
 November
 December
2021
 January
 February
 March
 April
 May
 June
 July
 August

Nonagricultural Wage and Salary Employment (thousands)					
Total	Mfg.	Trade, Transport, and Utilities	Professional and Business Services	Educational and Health Services	Government
1,001.1	120.1	177.3	141.3	187.3	135.2
1,019.5	123.5	180.8	145.4	191.9	134.8
1,029.6	123.9	181.6	148.3	193.9	133.5
1,036.6	124.3	182.5	150.7	194.0	133.8
1,045.4	124.3	184.0	150.8	197.3	134.6
1,055.3	121.1	184.7	153.1	201.6	136.3
1,058.7	121.2	182.2	155.2	202.2	136.6
1,069.9	123.7	182.2	158.8	203.8	137.6
1,080.0	123.4	185.6	161.5	206.3	138.6
1,004.5	114.7	178.2	151.5	196.5	131.8
992.0	113.1	177.7	150.7	191.8	125.6
997.5	113.3	179.3	152.8	192.2	124.9
1,000.2	113.2	178.4	150.8	194.8	130.0
1,009.0	113.0	178.0	151.4	198.2	131.9
1,012.8	113.0	183.0	152.2	198.3	132.5
1,005.5	113.3	182.9	150.8	195.3	129.5
983.4	110.7	179.0	146.3	193.8	125.7
986.0	110.5	177.7	144.9	196.3	128.2
993.6	110.5	176.9	148.6	197.2	128.8
1,005.3	110.4	177.5	154.8	196.5	130.1
1,010.4	110.4	177.5	155.5	195.3	131.5
1,014.7	111.4	177.4	156.0	194.0	130.6
1,019.0	111.3	179.6	158.0	192.6	127.3
1,014.1	112.8	179.0	158.1	191.6	126.8

Cleveland-Elyria MSA

Nonagricultural Wage and Salary Employment^a

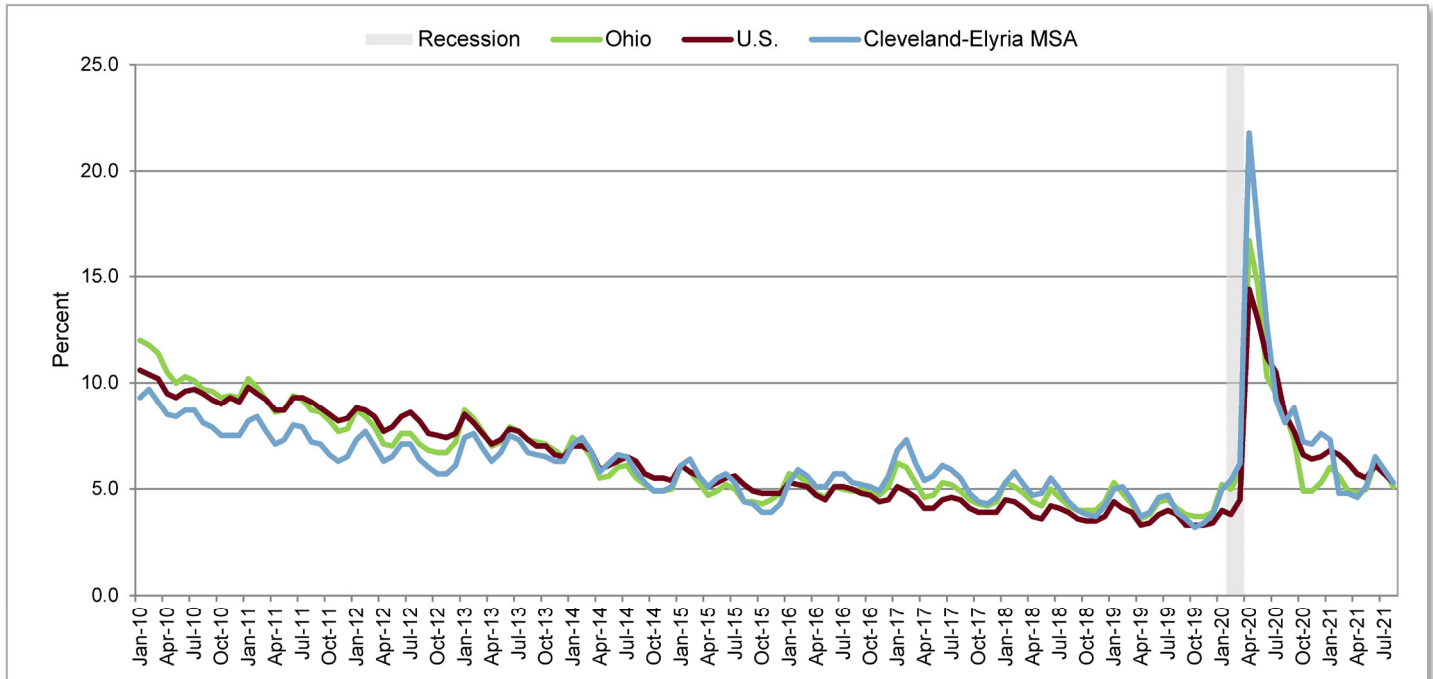
Not Seasonally Adjusted

	Employment (thousands)			Change (thousands)		Percent Change	
	Aug 2021 ^b	Jul 2021 ^c	Aug 2020 ^c	From Last Month	From Last Year	From Last Month	From Last Year
Total Nonagricultural	1,014.1	1,019.0	997.5	-4.9	16.6	-0.5	1.7
Total Private	887.3	891.7	872.6	-4.4	14.7	-0.5	1.7
Goods-Producing (Private)	153.7	153.2	151.7	0.5	2.0	0.3	1.3
Mining, Logging, and Construction	40.9	41.9	38.4	-1.0	2.5	-2.4	6.5
Specialty Trade Contractors	26.7	27.5	25.8	-0.8	0.9	-2.9	3.5
Manufacturing	112.8	111.3	113.3	1.5	-0.5	1.3	-0.4
Durable Goods ^d	78.4	77.0	79.9	1.4	-1.5	1.8	-1.9
Primary Metals	5.5	5.5	6.0	0.0	-0.5	0.0	-8.3
Fabricated Metal Products	25.6	25.2	24.6	0.4	1.0	1.6	4.1
Transportation Equipment	12.7	12.3	12.4	0.4	0.3	3.3	2.4
Motor Vehicle Parts	7.1	6.8	6.9	0.3	0.2	4.4	2.9
Nondurable Goods ^e	34.4	34.3	33.4	0.1	1.0	0.3	3.0
Service-Providing (Private)	733.6	738.5	720.9	-4.9	12.7	-0.7	1.8
Trade, Transportation, and Utilities	179.0	179.6	179.3	-0.6	-0.3	-0.3	-0.2
Wholesale Trade	49.2	50.0	49.4	-0.8	-0.2	-1.6	-0.4
Merchant Wholesalers, Durable Goods	28.9	29.4	28.8	-0.5	0.1	-1.7	0.3
Merchant Wholesalers, Nondurable Goods	16.6	16.6	16.4	0.0	0.2	0.0	1.2
Retail Trade	93.2	93.8	94.1	-0.6	-0.9	-0.6	-1.0
Food and Beverage Stores	20.2	20.4	20.0	-0.2	0.2	-1.0	1.0
Health and Personal Care Stores	8.2	8.3	8.1	-0.1	0.1	-1.2	1.2
General Merchandise Stores	17.3	17.5	18.3	-0.2	-1.0	-1.1	-5.5
Transportation, Warehousing, and Utilities	36.6	35.8	35.8	0.8	0.8	2.2	2.2
Transportation and Warehousing	34.5	33.4	33.3	1.1	1.2	3.3	3.6
Information	12.6	12.6	11.9	0.0	0.7	0.0	5.9
Financial Activities	66.6	66.5	65.1	0.1	1.5	0.2	2.3
Finance and Insurance	52.5	52.5	50.9	0.0	1.6	0.0	3.1
Credit Intermediation and Related Activities	16.9	16.9	17.5	0.0	-0.6	0.0	-3.4
Depository Credit Intermediation	11.4	11.5	12.3	-0.1	-0.9	-0.9	-7.3
Insurance Carriers and Related Activities	30.1	30.1	28.1	0.0	2.0	0.0	7.1
Insurance Carriers	18.6	18.5	18.0	0.1	0.6	0.5	3.3
Professional and Business Services	158.1	158.0	152.8	0.1	5.3	0.1	3.5
Professional, Scientific, and Technical Services	59.3	59.7	59.2	-0.4	0.1	-0.7	0.2
Management of Companies and Enterprises	29.3	29.4	29.2	-0.1	0.1	-0.3	0.3
Administrative, Support and Waste Services	69.5	68.9	64.4	0.6	5.1	0.9	7.9
Administrative and Support Services	66.5	65.8	61.7	0.7	4.8	1.1	7.8
Employment Services	26.6	25.4	24.8	1.2	1.8	4.7	7.3
Educational and Health Services	191.6	192.6	192.2	-1.0	-0.6	-0.5	-0.3
Educational Services	28.5	30.3	29.9	-1.8	-1.4	-5.9	-4.7
Health Care and Social Assistance	163.1	162.3	162.3	0.8	0.8	0.5	0.5
Hospitals	68.1	67.8	67.0	0.3	1.1	0.4	1.6
Nursing and Residential Care Facilities	29.1	29.0	30.3	0.1	-1.2	0.3	-4.0
Leisure and Hospitality	92.8	95.5	83.8	-2.7	9.0	-2.8	10.7
Arts, Entertainment, and Recreation	17.7	19.2	13.7	-1.5	4.0	-7.8	29.2
Accommodation and Food Services	75.1	76.3	70.1	-1.2	5.0	-1.6	7.1
Other Services	32.9	33.7	35.8	-0.8	-2.9	-2.4	-8.1
Government	126.8	127.3	124.9	-0.5	1.9	-0.4	1.5
Federal Government	19.2	19.2	21.1	0.0	-1.9	0.0	-9.0
State Government	6.0	6.0	6.0	0.0	0.0	0.0	0.0
State Government Educational ^f Services	1.8	1.9	1.8	-0.1	0.0	-5.3	0.0
Local Government	101.6	102.1	97.8	-0.5	3.8	-0.5	3.9
Local Government Educational Services	43.6	43.3	41.7	0.3	1.9	0.7	4.6

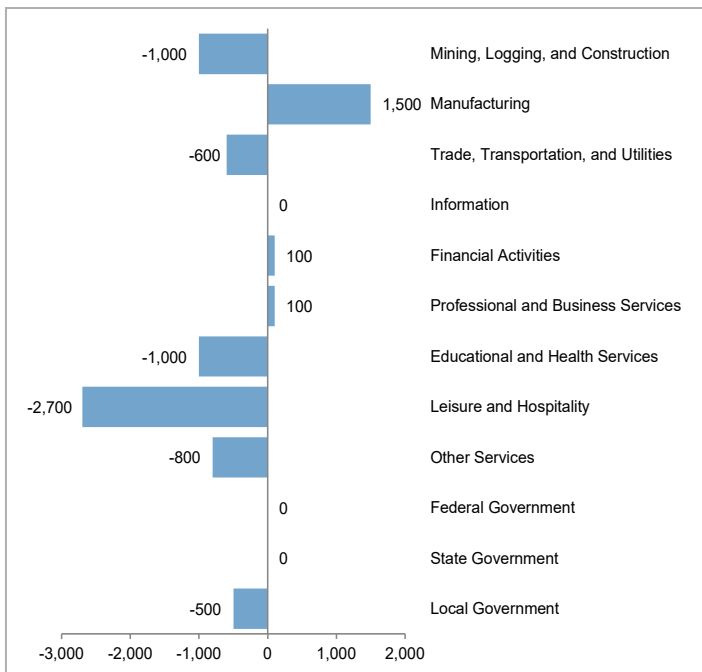
^aSee Technical Notes for concepts. ^bPreliminary. ^cRevised. ^dIncludes wood products; nonmetallic mineral products; primary metals; fabricated metal products; machinery manufacturing; computer and electronic products; electrical equipment and appliance manufacturing; furniture and related products; miscellaneous manufacturing. ^eIncludes food manufacturing; beverage and tobacco products; textile mills; textile product mills; apparel manufacturing; leather and allied products; paper manufacturing; printing and related support activities; petroleum and coal products; chemical manufacturing. ^fIncludes state universities. Excludes the agricultural extension service.

Cleveland-Elyria Metropolitan Statistical Area Not Seasonally Adjusted

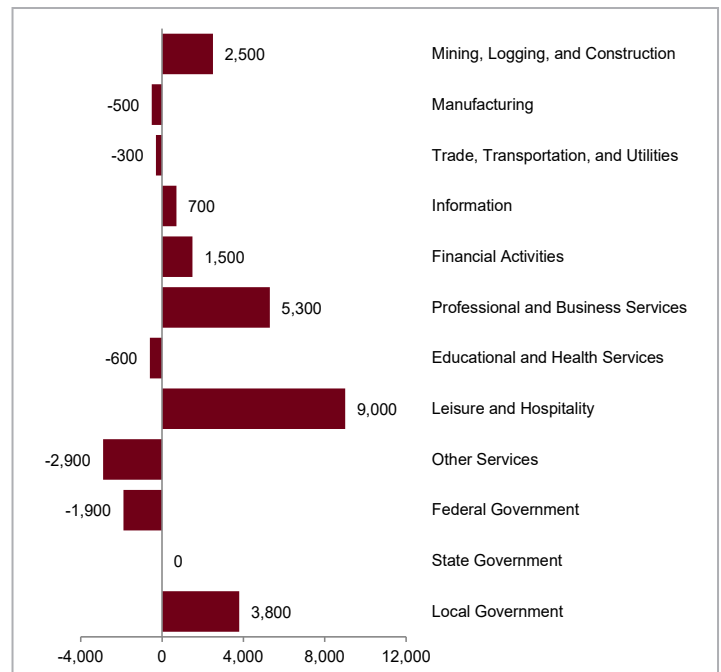
Unemployment Rates



Cleveland-Elyria MSA Over-the-Month Change



Cleveland-Elyria MSA Over-the-Year Change



Columbus Metropolitan Statistical Area Not Seasonally Adjusted

Delaware, Fairfield, Franklin, Hocking, Licking, Madison, Morrow, Perry, Pickaway, and Union Counties

Over-the-Month Change: Nonfarm payroll employment in the Columbus metropolitan area totaled 1,089,200 in August 2021, a decrease of 6,900 jobs from July. Employment in goods-producing industries, at 119,600, increased 400 as gains in mining, logging, and construction (+1,200) surpassed losses in manufacturing (-800). Private service-providing employment, at 793,600, decreased 7,600 as losses in educational and health services (-4,000), trade, transportation, and utilities (-1,500), financial activities (-1,000), leisure and hospitality (-700), and professional and business services (-500) exceeded gains in information (+100). Other services did not change over the month. Government employment, at 176,000, increased 300 with gains in federal (+100), state (+100), and local (+100) government.



Over-the-Year Change: Nonagricultural wage and salary employment increased 27,400 from August 2020 to August 2021. Goods-producing industries increased 4,200 with gains in mining, logging, and construction (+2,800) and manufacturing (+1,400). Employment in the private service-providing sector increased 18,900 as gains in leisure and hospitality (+9,300), professional and business services (+3,800), trade, transportation, and utilities (+3,300), other services (+2,200), and financial activities (+500) surpassed losses in information (-200). Educational and health services did not change over the year. Government employment increased 4,300 as gains in local government (+6,700) exceeded losses in federal (-2,000) and state (-400) government.

Civilian Labor Force (thousands)			Unemployment Rate
Total	Employed	Unemployed	
1,001.0	922.5	78.5	7.8%
1,004.5	939.6	64.9	6.5%
1,015.5	949.7	65.8	6.5%
1,030.7	979.9	50.8	4.9%
1,042.2	998.3	43.9	4.2%
1,060.0	1,015.4	44.6	4.2%
1,080.5	1,036.3	44.3	4.1%
1,088.6	1,046.6	42.0	3.9%
1,106.9	1,067.0	39.9	3.6%
1,108.4	1,030.5	77.8	7.0%
1,127.2	1,024.8	102.4	9.1%
1,140.3	1,044.1	96.1	8.4%
1,113.9	1,038.2	75.7	6.8%
1,104.6	1,056.9	47.6	4.3%
1,112.8	1,066.5	46.3	4.2%
1,105.5	1,057.3	48.2	4.4%
1,107.9	1,049.4	58.6	5.3%
1,117.5	1,057.4	60.1	5.4%
1,121.3	1,065.6	55.7	5.0%
1,115.9	1,065.2	50.7	4.5%
1,060.0	1,009.7	50.3	4.7%
1,084.3	1,022.3	62.0	5.7%
1,097.4	1,037.8	59.7	5.4%
1,102.3	1,050.9	51.4	4.7%

2011
2012
2013
2014
2015
2016
2017
2018
2019
2020
2020
July
August
September
October
November
December
2021
January
February
March
April
May
June
July
August

Nonagricultural Wage and Salary Employment (thousands)					
Total	Mfg.	Trade, Transport., and Utilities	Professional and Business Services	Educational and Health Services	Government
941.4	66.1	181.9	151.9	131.4	166.0
968.0	68.0	185.0	159.2	136.3	165.8
991.6	69.4	187.3	165.8	138.8	166.0
1,016.6	70.0	191.9	175.5	144.0	167.2
1,040.6	71.7	197.2	176.9	148.9	170.5
1,064.3	71.6	201.9	180.5	153.2	174.0
1,085.4	72.3	207.0	180.0	158.6	177.7
1,100.3	73.3	208.6	181.4	161.8	180.0
1,113.9	73.6	213.2	182.1	163.1	183.1
1,063.9	70.4	215.2	174.5	155.6	177.8
1,054.6	70.1	215.7	173.1	152.6	170.4
1,061.8	70.1	217.1	174.8	154.1	171.7
1,064.5	70.1	216.5	174.0	155.0	175.6
1,079.1	71.2	220.5	178.9	157.6	179.3
1,089.5	72.6	227.2	179.6	158.5	181.1
1,084.0	72.9	228.0	178.3	157.8	178.1
1,064.6	72.1	221.3	173.7	157.4	175.0
1,069.5	72.9	219.7	174.0	158.0	178.1
1,072.4	73.5	216.6	175.5	158.1	179.6
1,073.8	72.1	217.2	173.1	158.7	180.7
1,076.0	71.6	214.7	173.7	158.8	180.5
1,090.1	72.8	218.9	176.2	158.3	178.4
1,096.1	72.3	221.9	179.1	158.1	175.7
1,089.2	71.5	220.4	178.6	154.1	176.0

Columbus MSA

Nonagricultural Wage and Salary Employment^a

Not Seasonally Adjusted

Total Nonagricultural**Total Private****Goods-Producing (Private)****Mining, Logging, and Construction**

Specialty Trade Contractors

ManufacturingDurable Goods^d

Transportation Equipment

Nondurable Goods^e

Food Manufacturing

Service-Providing (Private)**Trade, Transportation, and Utilities**

Wholesale Trade

Merchant Wholesalers, Durable Goods

Retail Trade

Health and Personal Care Stores

General Merchandise Stores

Transportation, Warehousing, and Utilities

Transportation and Warehousing

Information**Financial Activities**

Finance and Insurance

Credit Intermediation and Related Activities

Insurance Carriers and Related Activities

Insurance Carriers

Professional and Business Services

Professional, Scientific, and Technical Services

Computer Systems Design and Related Services

Management of Companies and Enterprises

Administrative, Support and Waste Services

Employment Services

Educational and Health Services

Health Care and Social Assistance

Hospitals

Leisure and Hospitality

Accommodation and Food Services

Food Services and Drinking Places

Other Services**Government****Federal Government****State Government**State Government Educational^f Services**Local Government**

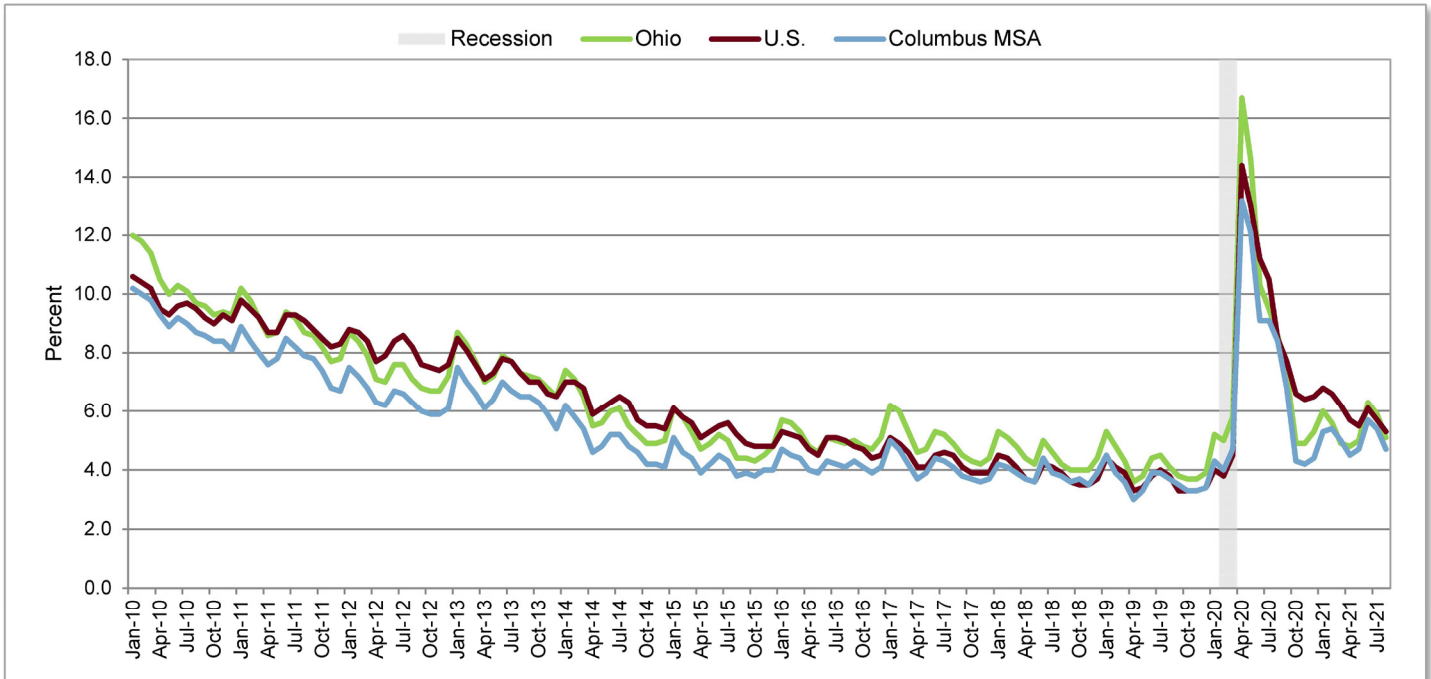
Local Government Educational Services

Employment (thousands)			Change (thousands)		Percent Change	
Aug 2021 ^b	Jul 2021 ^c	Aug 2020 ^c	From Last Month	From Last Year	From Last Month	From Last Year
1,089.2	1,096.1	1,061.8	-6.9	27.4	-0.6	2.6
913.2	920.4	890.1	-7.2	23.1	-0.8	2.6
119.6	119.2	115.4	0.4	4.2	0.3	3.6
48.1	46.9	45.3	1.2	2.8	2.6	6.2
30.4	30.2	28.1	0.2	2.3	0.7	8.2
71.5	72.3	70.1	-0.8	1.4	-1.1	2.0
43.9	44.4	42.9	-0.5	1.0	-1.1	2.3
13.9	14.1	14.2	-0.2	-0.3	-1.4	-2.1
27.6	27.9	27.2	-0.3	0.4	-1.1	1.5
7.0	7.1	6.8	-0.1	0.2	-1.4	2.9
793.6	801.2	774.7	-7.6	18.9	-0.9	2.4
220.4	221.9	217.1	-1.5	3.3	-0.7	1.5
40.3	39.7	40.3	0.6	0.0	1.5	0.0
25.2	24.7	24.4	0.5	0.8	2.0	3.3
97.4	99.3	97.3	-1.9	0.1	-1.9	0.1
5.3	5.5	5.3	-0.2	0.0	-3.6	0.0
17.5	17.8	17.5	-0.3	0.0	-1.7	0.0
82.7	82.9	79.5	-0.2	3.2	-0.2	4.0
78.3	78.6	75.1	-0.3	3.2	-0.4	4.3
14.9	14.8	15.1	0.1	-0.2	0.7	-1.3
86.2	87.2	85.7	-1.0	0.5	-1.1	0.6
69.4	68.9	70.6	0.5	-1.2	0.7	-1.7
25.7	25.6	26.2	0.1	-0.5	0.4	-1.9
38.8	39.0	38.9	-0.2	-0.1	-0.5	-0.3
25.0	25.1	26.1	-0.1	-1.1	-0.4	-4.2
178.6	179.1	174.8	-0.5	3.8	-0.3	2.2
66.9	66.6	65.9	0.3	1.0	0.5	1.5
17.8	17.3	17.6	0.5	0.2	2.9	1.1
37.5	37.3	37.6	0.2	-0.1	0.5	-0.3
74.2	75.2	71.3	-1.0	2.9	-1.3	4.1
31.7	30.7	28.5	1.0	3.2	3.3	11.2
154.1	158.1	154.1	-4.0	0.0	-2.5	0.0
137.1	139.5	137.8	-2.4	-0.7	-1.7	-0.5
32.0	32.5	31.9	-0.5	0.1	-1.5	0.3
99.6	100.3	90.3	-0.7	9.3	-0.7	10.3
84.8	84.0	77.0	0.8	7.8	1.0	10.1
79.6	79.5	71.9	0.1	7.7	0.1	10.7
39.8	39.8	37.6	0.0	2.2	0.0	5.9
176.0	175.7	171.7	0.3	4.3	0.2	2.5
14.5	14.4	16.5	0.1	-2.0	0.7	-12.1
70.0	69.9	70.4	0.1	-0.4	0.1	-0.6
28.3	27.7	28.5	0.6	-0.2	2.2	-0.7
91.5	91.4	84.8	0.1	6.7	0.1	7.9
49.2	48.8	47.2	0.4	2.0	0.8	4.2

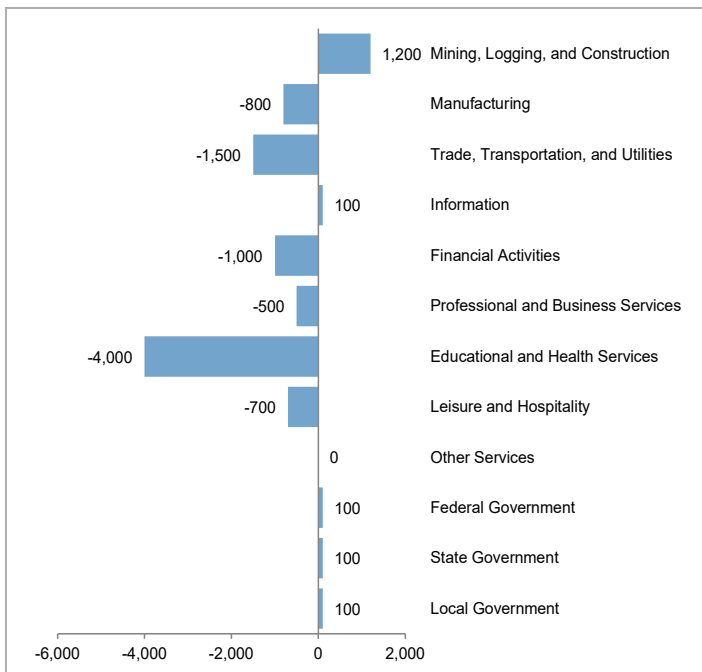
^aSee Technical Notes for concepts. ^bPreliminary. ^cRevised. ^dIncludes wood products; nonmetallic mineral products; primary metals; fabricated metal products; machinery manufacturing; computer and electronic products; electrical equipment and appliance manufacturing; furniture and related products; miscellaneous manufacturing. ^eIncludes food manufacturing; beverage and tobacco products; textile mills; textile product mills; apparel manufacturing; leather and allied products; paper manufacturing; printing and related support activities; petroleum and coal products; chemical manufacturing. ^fIncludes state universities. Excludes the agricultural extension service.

Columbus Metropolitan Statistical Area Not Seasonally Adjusted

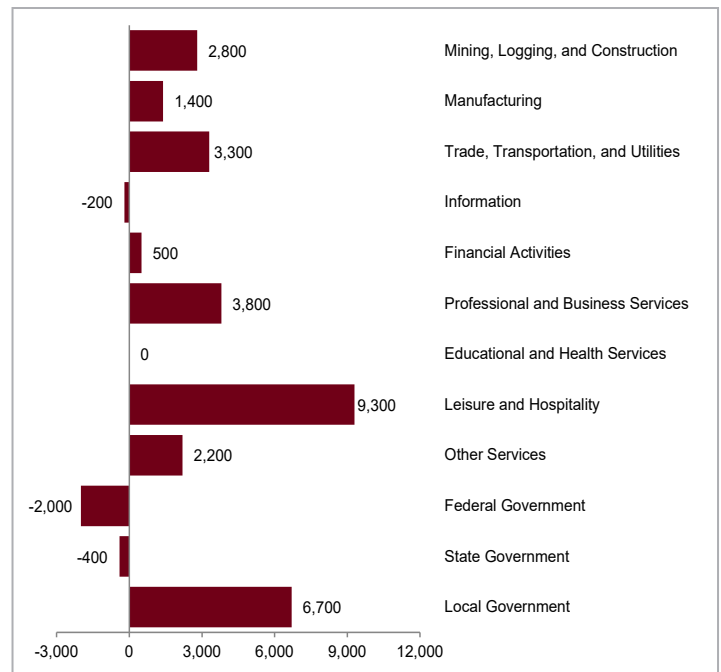
Unemployment Rates



Columbus MSA Over-the-Month Change



Columbus MSA Over-the-Year Change



Dayton Metropolitan Statistical Area Not Seasonally Adjusted

Greene, Miami, and Montgomery Counties

Over-the-Month Change: Nonfarm payroll employment in the Dayton metropolitan area totaled 372,700 in August 2021, a decrease of 600 jobs from July. Employment in goods-producing industries, at 56,600, decreased 200 in manufacturing. Private service-providing employment, at 257,900, decreased 400 as losses in trade, transportation, and utilities (-1,300), leisure and hospitality (-200), information (-100), and other services (-100) exceeded gains in educational and health services (+800), financial activities (+300), and professional and business services (+200). Government employment, at 58,200 did not change over the month as gains in state government (+100) were offset by losses in local government (-100). Federal government employment did not change over the month.



Over-the-Year Change: Nonagricultural wage and salary employment increased 3,300 from August 2020 to August 2021. Goods-producing industries increased 2,200 with gains in manufacturing (+1,300) and mining, logging, and construction (+900). The private service-providing sector increased 1,900 as gains in trade, transportation, and utilities (+1,700), leisure and hospitality (+1,100), educational and health services (+800), financial activities (+400), and other services (+300) surpassed losses in professional and business services (-2,200) and information (-200). Government employment decreased 800 as losses in federal (-1,000) and state (-500) government exceeded gains in state government (+700).

Civilian Labor Force (thousands)			Unemployment Rate
Total	Employed	Unemployed	
394.3	357.5	36.8	9.3%
387.6	357.4	30.2	7.8%
382.3	352.3	30.0	7.9%
381.8	359.5	22.3	5.8%
383.1	364.6	18.5	4.8%
385.7	367.3	18.4	4.8%
389.1	371.0	18.1	4.7%
388.4	371.6	16.9	4.3%
391.9	375.9	15.9	4.1%
390.2	359.4	30.8	7.9%
2020			
395.8	356.6	39.3	9.9%
400.1	363.8	36.3	9.1%
392.3	363.6	28.7	7.3%
385.8	367.6	18.1	4.7%
387.0	369.3	17.7	4.6%
383.7	365.2	18.5	4.8%
2021			
385.7	363.5	22.3	5.8%
388.6	366.2	22.4	5.8%
390.4	370.8	19.6	5.0%
390.7	371.7	19.0	4.9%
369.4	350.1	19.3	5.2%
377.0	353.1	23.9	6.3%
377.5	354.4	23.1	6.1%
380.4	360.4	20.0	5.3%

2011
2012
2013
2014
2015
2016
2017
2018
2019
2020
2020
July
August
September
October
November
December
2021
January
February
March
April
May
June
July
August

Nonagricultural Wage and Salary Employment (thousands)					
Total	Mfg.	Trade, Transport., and Utilities	Professional and Business Services	Educational and Health Services	Government
365.4	37.7	61.3	46.8	68.7	64.2
368.8	38.5	62.8	47.4	69.2	63.3
368.3	38.3	63.3	47.4	69.0	62.4
372.5	38.9	64.3	48.9	69.7	62.0
379.8	40.0	65.6	50.3	71.2	62.7
384.8	41.2	65.3	50.8	72.8	63.0
388.3	42.0	65.6	51.2	73.7	62.6
390.2	43.0	66.2	52.3	74.0	62.0
391.9	43.7	65.6	52.4	74.8	62.2
370.5	40.6	63.8	50.2	71.6	60.5
2020					
366.4	40.3	63.7	50.3	69.0	58.6
369.4	40.4	63.9	50.7	70.6	59.0
372.6	40.4	64.1	51.0	72.6	59.8
374.7	41.0	65.4	50.3	72.9	60.0
376.7	41.2	66.4	50.1	73.0	60.5
373.7	40.8	67.2	49.8	72.1	59.8
2021					
367.8	40.8	65.4	48.0	72.0	58.7
369.5	40.9	65.5	47.5	72.4	59.6
372.4	41.3	65.7	47.7	73.2	60.1
374.1	41.2	65.9	48.3	73.1	60.4
372.5	41.5	66.7	47.5	71.7	59.1
376.0	41.7	67.7	48.6	71.2	58.9
373.3	41.9	66.9	48.3	70.6	58.2
372.7	41.7	65.6	48.5	71.4	58.2

Dayton MSA

Nonagricultural Wage and Salary Employment^a

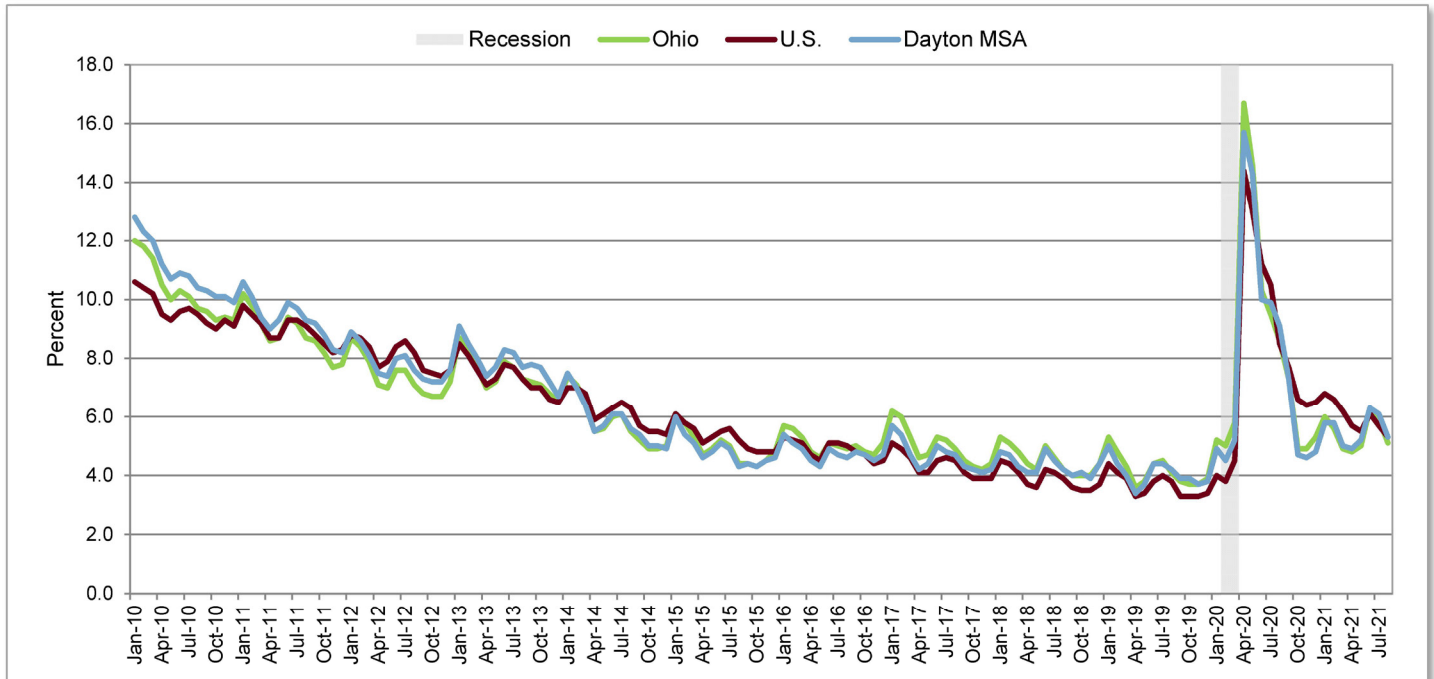
Not Seasonally Adjusted

	Employment (thousands)			Change (thousands)		Percent Change	
	Aug 2021 ^b	Jul 2021 ^c	Aug 2020 ^c	From Last Month	From Last Year	From Last Month	From Last Year
Total Nonagricultural	372.7	373.3	369.4	-0.6	3.3	-0.2	0.9
Total Private	314.5	315.1	310.4	-0.6	4.1	-0.2	1.3
Goods-Producing (Private)	56.6	56.8	54.4	-0.2	2.2	-0.4	4.0
Mining, Logging, and Construction	14.9	14.9	14.0	0.0	0.9	0.0	6.4
Manufacturing	41.7	41.9	40.4	-0.2	1.3	-0.5	3.2
Durable Goods ^d	31.0	31.0	30.4	0.0	0.6	0.0	2.0
Transportation Equipment	7.0	6.9	6.8	0.1	0.2	1.4	2.9
Service-Providing (Private)	257.9	258.3	256.0	-0.4	1.9	-0.2	0.7
Trade, Transportation, and Utilities	65.6	66.9	63.9	-1.3	1.7	-1.9	2.7
Wholesale Trade	12.8	12.8	13.0	0.0	-0.2	0.0	-1.5
Retail Trade	38.3	39.6	37.7	-1.3	0.6	-3.3	1.6
General Merchandise Stores	7.6	7.8	7.6	-0.2	0.0	-2.6	0.0
Transportation, Warehousing, and Utilities	14.5	14.5	13.2	0.0	1.3	0.0	9.8
Transportation and Warehousing	13.2	13.2	12.3	0.0	0.9	0.0	7.3
Information	6.6	6.7	6.8	-0.1	-0.2	-1.5	-2.9
Financial Activities	18.1	17.8	17.7	0.3	0.4	1.7	2.3
Finance and Insurance	14.0	14.0	13.8	0.0	0.2	0.0	1.4
Professional and Business Services	48.5	48.3	50.7	0.2	-2.2	0.4	-4.3
Professional, Scientific, and Technical Services	25.7	25.1	26.7	0.6	-1.0	2.4	-3.7
Management of Companies and Enterprises	5.1	5.0	5.0	0.1	0.1	2.0	2.0
Administrative, Support and Waste Services	17.7	18.2	19.0	-0.5	-1.3	-2.7	-6.8
Educational and Health Services	71.4	70.6	70.6	0.8	0.8	1.1	1.1
Health Care and Social Assistance	61.5	61.3	60.3	0.2	1.2	0.3	2.0
Hospitals	17.9	17.8	18.1	0.1	-0.2	0.6	-1.1
Leisure and Hospitality	34.8	35.0	33.7	-0.2	1.1	-0.6	3.3
Other Services	12.9	13.0	12.6	-0.1	0.3	-0.8	2.4
Government	58.2	58.2	59.0	0.0	-0.8	0.0	-1.4
Federal Government	19.7	19.7	20.7	0.0	-1.0	0.0	-4.8
State Government	3.9	3.8	4.4	0.1	-0.5	2.6	-11.4
State Government Educational ^e Services	2.9	2.7	3.3	0.2	-0.4	7.4	-12.1
Local Government	34.6	34.7	33.9	-0.1	0.7	-0.3	2.1
Local Government Educational Services	18.7	18.8	18.2	-0.1	0.5	-0.5	2.7

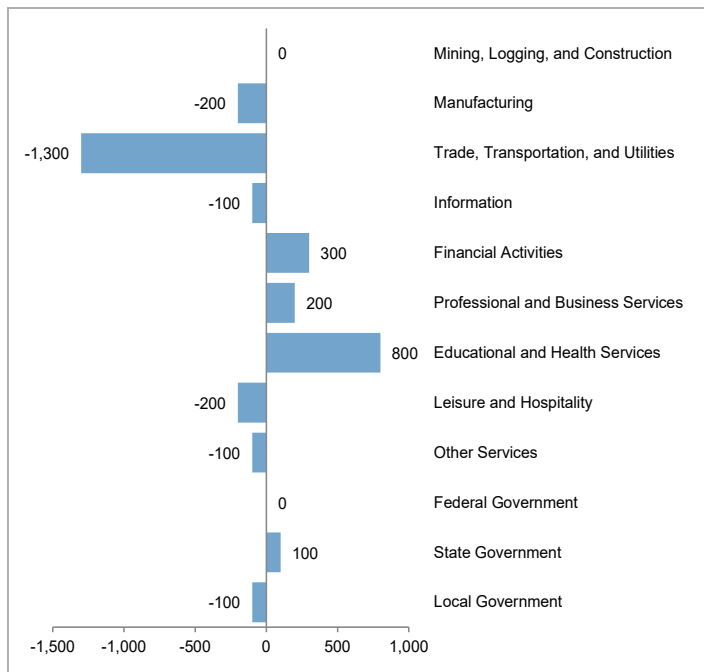
^aSee Technical Notes for concepts. ^bPreliminary. ^cRevised. ^dIncludes wood products; nonmetallic mineral products; primary metals; fabricated metal products; machinery manufacturing; computer and electronic products; electrical equipment and appliance manufacturing; furniture and related products; miscellaneous manufacturing. ^eIncludes state universities. Excludes the agricultural extension service.

Dayton Metropolitan Statistical Area Not Seasonally Adjusted

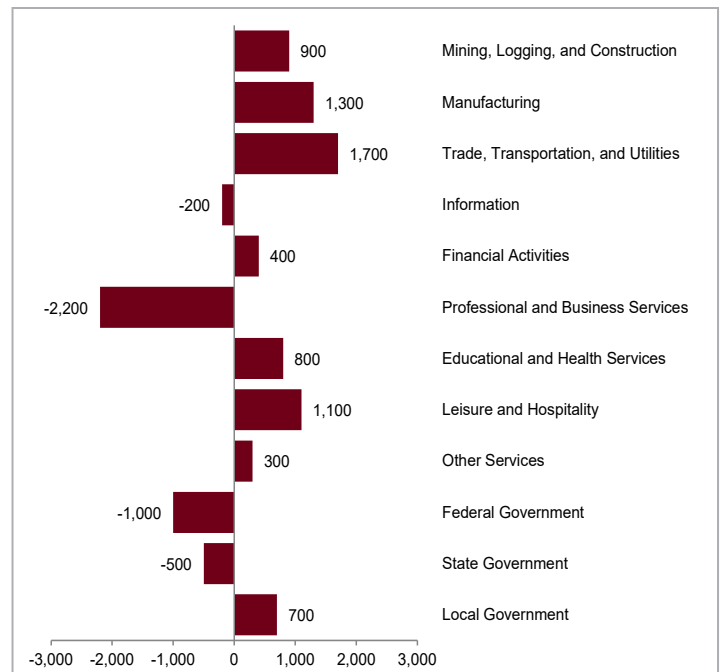
Unemployment Rates



Dayton MSA Over-the-Month Change



Dayton MSA Over-the-Year Change



Lima Metropolitan Statistical Area Not Seasonally Adjusted

Allen County

Over-the-Month Change: Nonfarm payroll employment in the Lima metropolitan area totaled 52,000 in August 2021, it did not change from July. Employment in goods-producing industries, at 11,300, did not change over the month. Private service-providing employment, at 35,100, did not change over the month as losses in leisure and hospitality (-100) were offset by gains in scattered industries (+100). Government employment, at 5,600, did not change over the month.

Over-the-Year Change: Nonagricultural wage and salary employment increased 2,000 from August 2020 to August 2021. Goods-producing industries increased 700 with gains in manufacturing (+600) and mining, logging, and construction (+100). The private service-providing sector increased 1,400 with gains in leisure and hospitality (+500), scattered industries (+400), professional and business services (+300), trade, transportation, and utilities (+100), and educational and health services (+100). Government employment decreased 100 in federal government. State and local government employment did not change over the year.



Civilian Labor Force (thousands)			Unemployment Rate
Total	Employed	Unemployed	
50.8	46.0	4.8	9.5%
50.0	46.1	3.9	7.7%
49.4	45.6	3.9	7.8%
48.5	45.7	2.8	5.8%
48.0	45.6	2.4	4.9%
48.5	46.0	2.4	5.0%
48.8	46.3	2.4	5.0%
48.0	45.9	2.1	4.5%
48.1	46.1	2.0	4.1%
48.3	44.2	4.1	8.5%
47.9	43.2	4.7	9.8%
48.9	44.7	4.2	8.7%
47.9	44.7	3.3	6.8%
47.8	45.6	2.3	4.7%
48.5	46.4	2.2	4.4%
48.6	46.3	2.3	4.8%
48.4	45.6	2.8	5.8%
49.1	45.8	3.3	6.7%
48.7	46.1	2.6	5.4%
49.0	45.8	3.2	6.6%
46.4	43.6	2.8	6.1%
47.1	44.1	3.0	6.4%
47.8	44.8	3.0	6.3%
48.0	45.5	2.6	5.3%

2011
2012
2013
2014
2015
2016
2017
2018
2019
2020
2020
 July
 August
 September
 October
 November
 December
2021
 January
 February
 March
 April
 May
 June
 July
 August

Nonagricultural Wage and Salary Employment (thousands)					
Total	Mfg.	Trade, Transport, and Utilities	Professional and Business Services	Educational and Health Services	Government
51.7	7.9	10.3	4.0	11.5	6.8
52.2	7.9	10.3	4.4	11.4	6.5
52.3	8.3	10.1	4.8	11.2	6.1
52.0	8.5	9.8	4.8	11.1	6.1
52.3	8.8	9.8	4.9	11.0	6.1
52.9	8.9	9.9	4.7	11.8	6.1
53.3	9.0	9.8	4.5	12.1	6.1
53.0	9.2	9.8	4.6	11.9	6.0
53.0	9.1	9.7	5.2	11.5	6.1
50.1	8.5	9.3	5.3	10.6	5.9
48.9	7.7	9.4	5.1	10.4	5.7
50.0	8.4	9.4	5.4	10.5	5.7
50.3	8.4	9.3	5.5	10.6	5.8
51.1	8.5	9.7	5.6	10.7	5.8
52.1	8.8	9.8	5.6	10.7	5.8
52.3	8.9	9.9	5.6	10.6	5.8
50.9	8.9	9.3	5.4	10.5	5.7
51.0	8.9	9.3	5.5	10.6	5.7
51.2	8.8	9.4	5.5	10.6	5.8
50.8	8.6	9.2	5.5	10.7	5.7
51.1	8.7	9.6	5.6	10.6	5.7
51.7	9.2	9.6	5.6	10.6	5.7
52.0	9.0	9.5	5.7	10.6	5.6
52.0	9.0	9.5	5.7	10.6	5.6

Lima MSA**Nonagricultural Wage and Salary Employment^a
Not Seasonally Adjusted**

	Employment (thousands)			Change (thousands)		Percent Change	
	Aug 2021 ^b	Jul 2021 ^c	Aug 2020 ^c	From Last Month	From Last Year	From Last Month	From Last Year
Total Nonagricultural	52.0	52.0	50.0	0.0	2.0	0.0	4.0
Total Private	46.4	46.4	44.3	0.0	2.1	0.0	4.7
Goods-Producing (Private)	11.3	11.3	10.6	0.0	0.7	0.0	6.6
Mining, Logging, and Construction	2.3	2.3	2.2	0.0	0.1	0.0	4.5
Manufacturing ^d	9.0	9.0	8.4	0.0	0.6	0.0	7.1
Service-Providing (Private)	35.1	35.1	33.7	0.0	1.4	0.0	4.2
Trade, Transportation, and Utilities	9.5	9.5	9.4	0.0	0.1	0.0	1.1
Wholesale Trade	2.4	2.4	2.4	0.0	0.0	0.0	0.0
Retail Trade	5.3	5.2	5.6	0.1	-0.3	1.9	-5.4
Professional and Business Services	5.7	5.7	5.4	0.0	0.3	0.0	5.6
Administrative, Support, and Waste Services	4.0	4.0	3.7	0.0	0.3	0.0	8.1
Educational and Health Services	10.6	10.6	10.5	0.0	0.1	0.0	1.0
Leisure and Hospitality	5.0	5.1	4.5	-0.1	0.5	-2.0	11.1
Government	5.6	5.6	5.7	0.0	-0.1	0.0	-1.8
Federal Government	0.3	0.3	0.4	0.0	-0.1	0.0	-25.0
State Government	1.0	1.0	1.0	0.0	0.0	0.0	0.0
Local Government	4.3	4.3	4.3	0.0	0.0	0.0	0.0
Local Government Educational Services	2.5	2.5	2.4	0.0	0.1	0.0	4.2

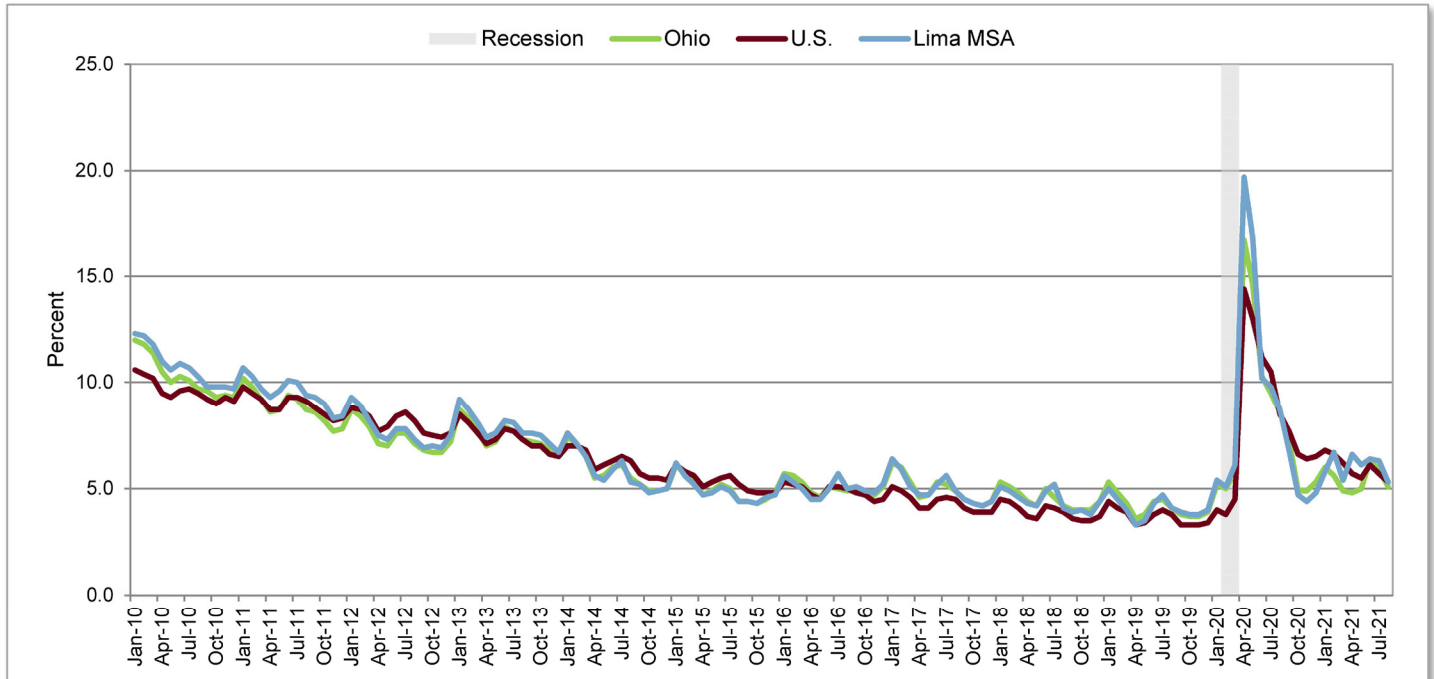
^aSee Technical Notes for concepts. ^bPreliminary. ^cRevised. ^dIncludes wood products; nonmetallic mineral products; primary metals; fabricated metal products; computer and electronic products; electrical equipment and appliance manufacturing; furniture and related products; miscellaneous manufacturing; food manufacturing; beverage and tobacco products; textile mills; textile product mills; apparel manufacturing; leather and allied products; paper manufacturing; printing and related support activities; petroleum and coal products; chemical manufacturing; plastics and rubber products.

Lima

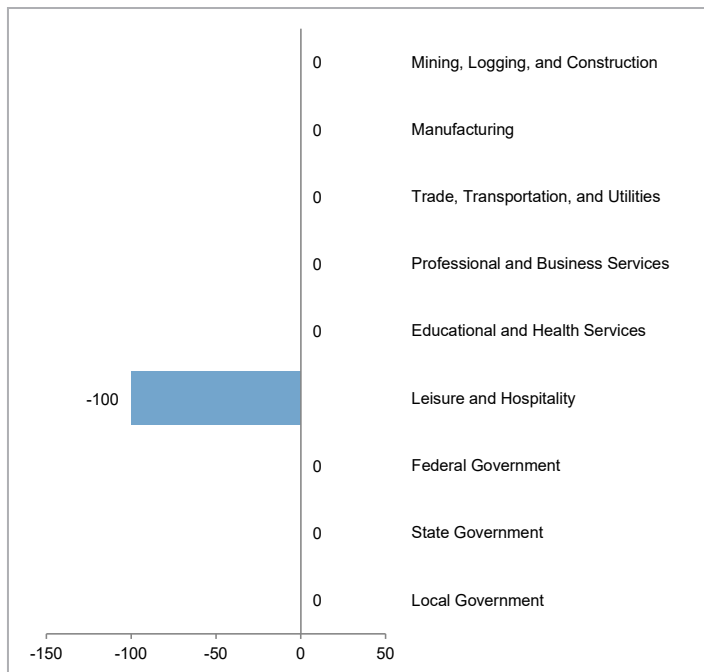
Metropolitan Statistical Area

Not Seasonally Adjusted

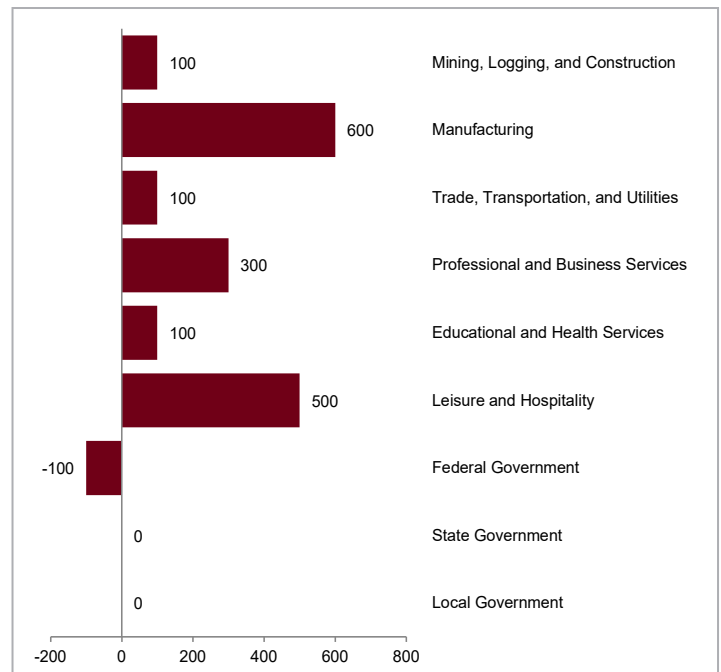
Unemployment Rates



Lima MSA Over-the-Month Change



Lima MSA Over-the-Year Change



Mansfield Metropolitan Statistical Area Not Seasonally Adjusted

Richland County

Over-the-Month Change: Nonfarm payroll employment in the Mansfield metropolitan area totaled 49,700 in August 2021, an increase of 200 jobs from July. Employment in goods-producing industries, at 11,500, did not change over the month. Private service-providing employment, at 30,900, increased 100 as gains in leisure and hospitality (+100) and scattered industries (+100) exceeded losses in trade, transportation, and utilities (-100). Government employment, at 7,300, increased 100 in local government. Federal and state government employment did not change over the month.



Over-the-Year Change: Nonagricultural wage and salary employment increased 1,300 from August 2020 to August 2021. Goods-producing industries increased 200 with gains in mining, logging, and construction (+100) and manufacturing (+100). Employment in the private service-providing sector increased 700 as gains in leisure and hospitality (+300), professional and business services (+200), trade, transportation, and utilities (+100), other services (+100), and scattered industries (+100) outpaced losses in educational and health services (-100). Government employment increased 400 as gains in local government (+500) outweighed losses in federal government (-100). State government employment did not change over the year.

Civilian Labor Force (thousands)			Unemployment Rate
Total	Employed	Unemployed	
58.0	51.8	6.1	10.6%
55.9	51.0	4.9	8.7%
54.9	50.2	4.7	8.6%
54.7	51.1	3.6	6.5%
53.7	50.7	3.0	5.6%
53.6	50.6	3.0	5.6%
53.4	50.5	2.9	5.4%
53.0	50.4	2.6	4.9%
52.7	50.3	2.4	4.6%
52.1	47.4	4.7	9.0%
2020			
53.0	47.5	5.5	10.4%
52.8	48.0	4.8	9.1%
51.8	48.1	3.8	7.3%
51.1	48.7	2.4	4.7%
51.9	49.3	2.5	4.8%
51.6	48.8	2.8	5.4%
2021			
51.9	48.6	3.3	6.4%
52.4	49.2	3.2	6.2%
52.4	49.8	2.6	5.0%
52.1	49.2	2.8	5.4%
49.5	46.7	2.8	5.7%
50.7	47.2	3.5	6.9%
50.7	47.4	3.3	6.4%
51.2	48.2	3.0	5.9%

2011
2012
2013
2014
2015
2016
2017
2018
2019
2020
2020
 July
 August
 September
 October
 November
 December
2021
 January
 February
 March
 April
 May
 June
 July
 August

Nonagricultural Wage and Salary Employment (thousands)					
Total	Mfg.	Trade, Transport., and Utilities	Professional and Business Services	Educational and Health Services	Government
52.8	8.9	10.1	6.1	8.3	8.0
52.3	9.3	10.0	5.3	8.1	7.9
52.1	9.4	10.0	5.2	8.1	7.7
52.8	9.5	10.2	5.4	8.0	7.9
52.5	9.7	10.1	5.3	8.1	7.7
52.7	9.7	10.0	5.5	8.1	7.7
52.5	9.9	10.0	5.1	8.1	7.6
52.7	10.1	10.2	4.9	8.3	7.7
52.1	9.9	10.0	4.8	8.1	7.7
48.5	9.0	9.6	4.2	7.8	7.4
2020					
48.5	8.9	9.5	4.4	7.7	6.9
48.4	9.1	9.6	4.2	7.7	6.9
48.8	9.1	9.6	4.1	7.8	7.4
49.1	9.1	9.8	4.2	7.8	7.4
50.0	9.2	10.4	4.3	7.8	7.4
49.8	9.2	10.4	4.3	7.8	7.3
2021					
48.8	9.2	10.1	4.2	7.7	7.1
49.3	9.2	10.0	4.2	7.8	7.5
49.7	9.3	10.1	4.3	7.8	7.6
49.2	9.2	9.8	4.2	7.8	7.5
49.5	9.3	9.5	4.3	7.8	7.6
50.0	9.4	9.9	4.3	7.7	7.4
49.5	9.2	9.8	4.4	7.6	7.2
49.7	9.2	9.7	4.4	7.6	7.3

Mansfield MSA

Nonagricultural Wage and Salary Employment^a

Not Seasonally Adjusted

	Employment (thousands)			Change (thousands)		Percent Change	
	Aug 2021 ^b	Jul 2021 ^c	Aug 2020 ^c	From Last Month	From Last Year	From Last Month	From Last Year
Total Nonagricultural	49.7	49.5	48.4	0.2	1.3	0.4	2.7
Total Private	42.4	42.3	41.5	0.1	0.9	0.2	2.2
Goods-Producing (Private)	11.5	11.5	11.3	0.0	0.2	0.0	1.8
Mining, Logging, and Construction	2.3	2.3	2.2	0.0	0.1	0.0	4.5
Manufacturing ^d	9.2	9.2	9.1	0.0	0.1	0.0	1.1
Service-Providing (Private)	30.9	30.8	30.2	0.1	0.7	0.3	2.3
Trade, Transportation, and Utilities	9.7	9.8	9.6	-0.1	0.1	-1.0	1.0
Retail Trade	6.5	6.6	6.2	-0.1	0.3	-1.5	4.8
Financial Activities	1.3	1.3	1.3	0.0	0.0	0.0	0.0
Professional and Business Services	4.4	4.4	4.2	0.0	0.2	0.0	4.8
Educational and Health Services	7.6	7.6	7.7	0.0	-0.1	0.0	-1.3
Leisure and Hospitality	5.3	5.2	5.0	0.1	0.3	1.9	6.0
Other Services	2.1	2.1	2.0	0.0	0.1	0.0	5.0
Government	7.3	7.2	6.9	0.1	0.4	1.4	5.8
Federal Government	0.6	0.6	0.7	0.0	-0.1	0.0	-14.3
State Government	1.4	1.4	1.4	0.0	0.0	0.0	0.0
Local Government	5.3	5.2	4.8	0.1	0.5	1.9	10.4
Local Government Educational Services	3.1	3.0	2.8	0.1	0.3	3.3	10.7

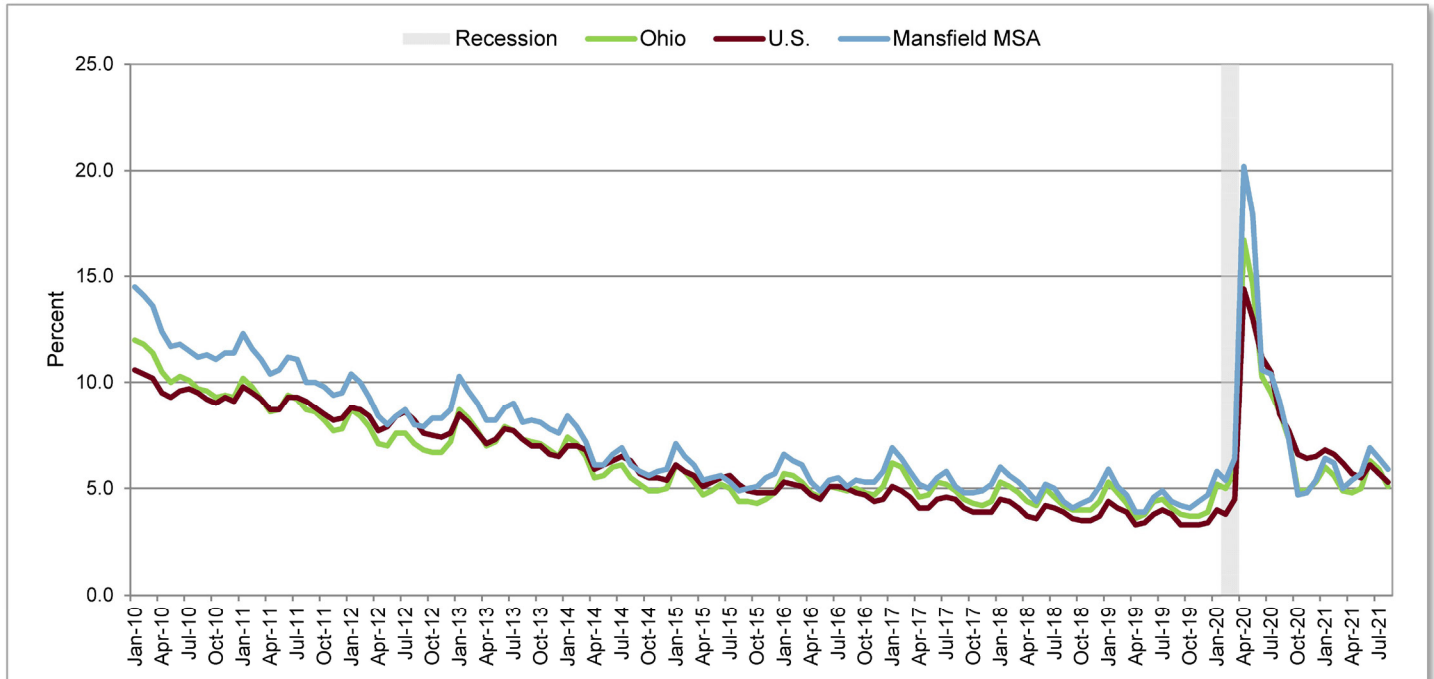
^aSee Technical Notes for concepts. ^bPreliminary. ^cRevised. ^dIncludes wood products; nonmetallic mineral products; primary metals; fabricated metal products; computer and electronic products; electrical equipment and appliance manufacturing; furniture and related products; miscellaneous manufacturing; food manufacturing; beverage and tobacco products; textile mills; textile product mills; apparel manufacturing; leather and allied products; paper manufacturing; printing and related support activities; petroleum and coal products; chemical manufacturing; plastics and rubber products.

Mansfield

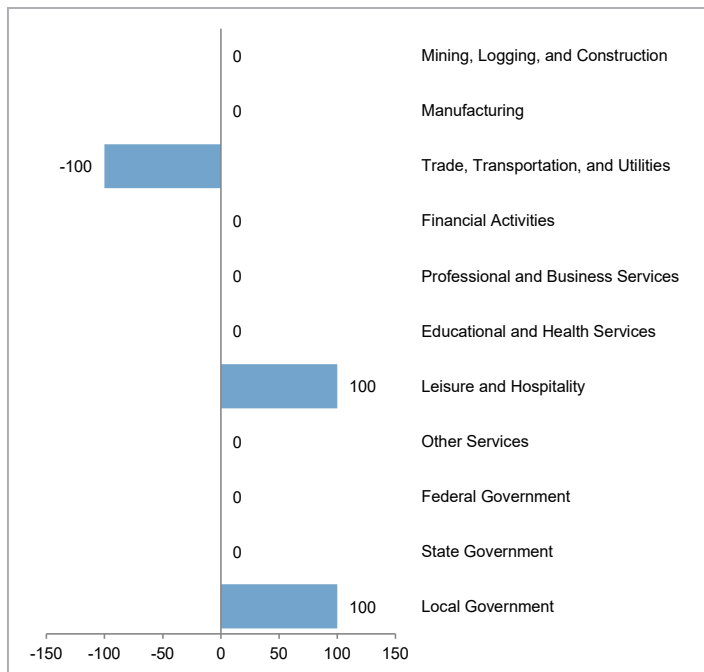
Metropolitan Statistical Area

Not Seasonally Adjusted

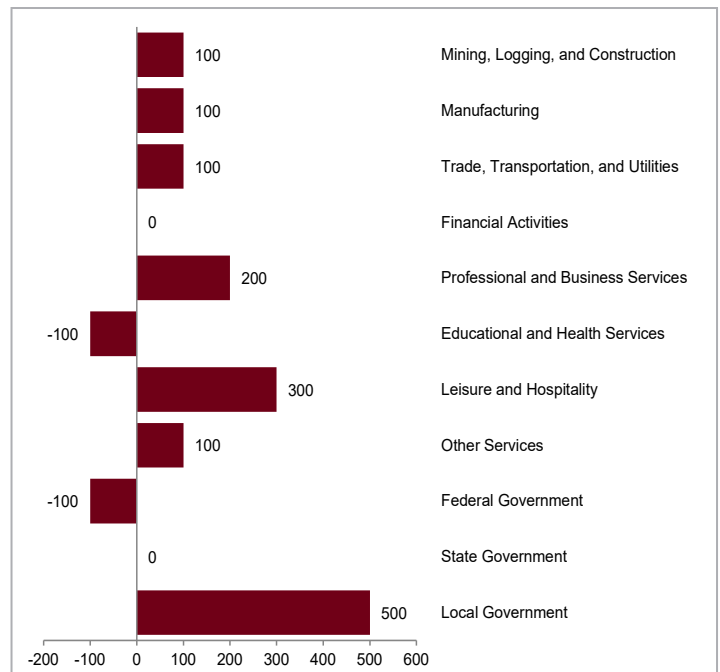
Unemployment Rates



Mansfield MSA Over-the-Month Change



Mansfield MSA Over-the-Year Change



Springfield Metropolitan Statistical Area Not Seasonally Adjusted

Clark County

Over-the-Month Change: Nonfarm payroll employment in the Springfield metropolitan area, at 47,000 in August 2021, decreased 700 from July. Employment in goods-producing industries, at 7,500, did not change over the month. The private service-providing sector, at 32,800, decreased 600 with losses in professional and business services (-400), financial activities (-100), and educational and health services (-100). Government employment, at 6,700, decreased 100 in local government. Federal and state government employment did not change over the month.



Over-the-Year Change: Nonagricultural wage and salary employment increased 700 from August 2020 to August 2021. Employment in goods-producing industries did not change over the year. The private service-providing sector increased 400 as gains in leisure and hospitality (+300), trade, transportation, and utilities (+100), and professional and business services (+100) surpassed losses in educational and health services (-100). Government employment increased 300 in local government. Federal and state government employment did not change over the year.

Civilian Labor Force (thousands)			Unemployment Rate
Total	Employed	Unemployed	
67.4	61.0	6.4	9.5%
65.9	60.8	5.1	7.8%
65.9	61.0	5.0	7.5%
65.2	61.4	3.8	5.8%
64.3	61.0	3.2	5.1%
63.8	60.5	3.4	5.3%
63.9	60.8	3.1	4.8%
63.2	60.4	2.9	4.6%
63.6	60.9	2.8	4.3%
62.9	57.8	5.1	8.1%
2020			
63.8	57.7	6.1	9.5%
64.1	58.4	5.6	8.8%
62.6	58.2	4.4	7.0%
61.9	59.0	2.8	4.6%
62.3	59.5	2.8	4.5%
62.1	59.1	3.0	4.8%
2021			
62.3	58.7	3.6	5.8%
62.8	59.3	3.6	5.7%
63.2	60.0	3.2	5.1%
63.2	60.1	3.1	4.8%
60.8	57.1	3.7	6.1%
61.7	57.6	4.1	6.7%
61.8	57.9	3.9	6.4%
61.7	58.4	3.3	5.4%

2011
2012
2013
2014
2015
2016
2017
2018
2019
2020
2020
 July
 August
 September
 October
 November
 December
2021
 January
 February
 March
 April
 May
 June
 July
 August

Nonagricultural Wage and Salary Employment (thousands)					
Total	Mfg.	Trade, Transport, and Utilities	Professional and Business Services	Educational and Health Services	Government
50.6	6.6	10.0	4.1	9.6	7.2
50.8	6.6	10.1	4.0	9.2	7.3
51.9	6.7	10.2	4.3	8.8	7.3
51.5	6.7	10.0	4.6	8.9	7.2
50.8	6.9	9.9	4.8	8.9	7.2
50.0	6.7	9.9	4.7	8.8	7.2
50.3	6.9	9.8	4.7	8.9	7.2
49.9	7.0	9.6	4.8	8.9	7.2
49.8	7.1	9.4	5.3	8.9	7.1
46.4	6.2	9.0	5.4	8.1	6.8
2020					
46.3	6.5	9.0	5.4	7.7	6.5
46.3	6.2	9.0	5.5	7.8	6.4
46.1	6.2	9.0	5.4	7.9	6.5
46.7	6.2	9.0	5.6	8.1	6.7
47.3	6.3	9.2	5.7	8.1	6.8
47.0	6.3	9.2	5.7	8.0	6.8
2021					
46.5	6.3	9.0	5.6	7.9	6.7
46.9	6.3	9.0	5.7	8.0	6.8
47.1	6.4	9.1	5.7	8.0	6.7
47.2	6.3	9.1	5.7	8.0	6.9
47.7	6.3	9.2	5.8	8.0	6.9
48.2	6.3	9.3	5.9	7.9	7.0
47.7	6.2	9.1	6.0	7.8	6.8
47.0	6.2	9.1	5.6	7.7	6.7

Springfield MSA

Nonagricultural Wage and Salary Employment^a

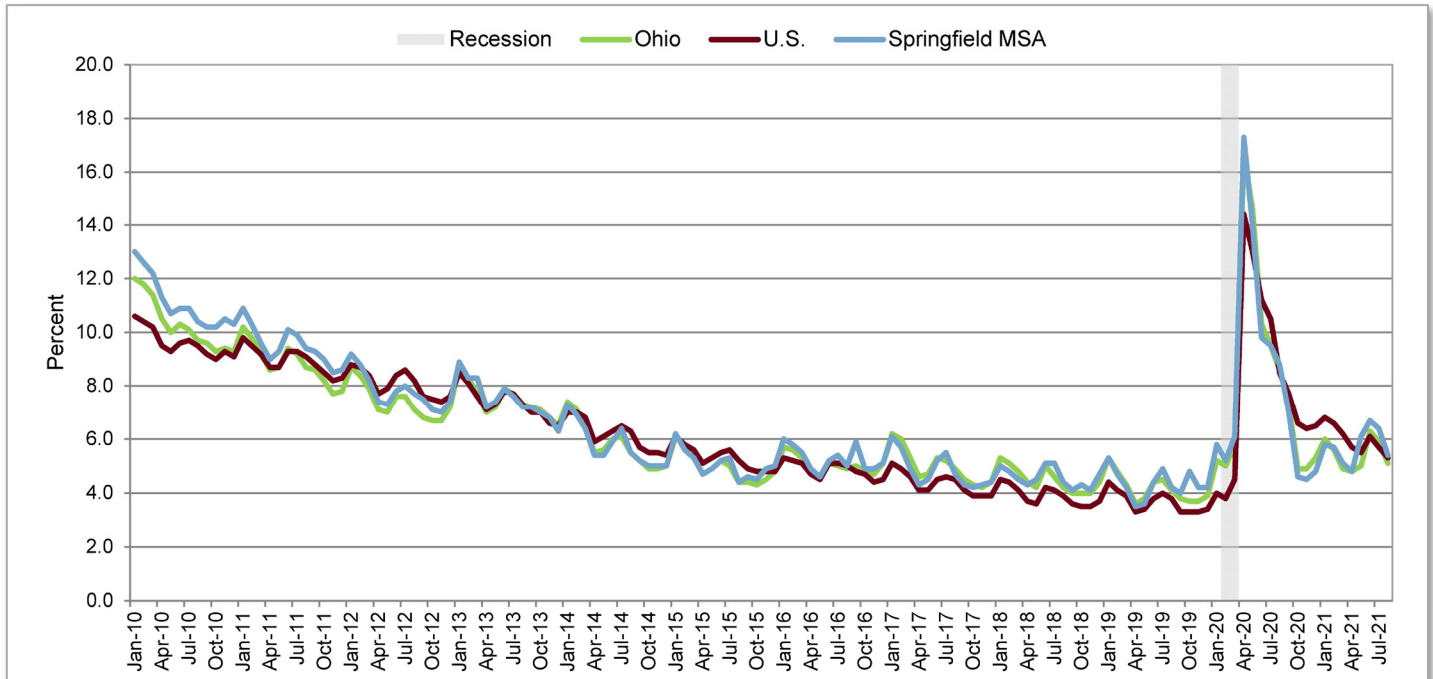
Not Seasonally Adjusted

	Employment (thousands)			Change (thousands)		Percent Change	
	Aug 2021 ^b	Jul 2021 ^c	Aug 2020 ^c	From Last Month	From Last Year	From Last Month	From Last Year
Total Nonagricultural	47.0	47.7	46.3	-0.7	0.7	-1.5	1.5
Total Private	40.3	40.9	39.9	-0.6	0.4	-1.5	1.0
Goods-Producing (Private)	7.5	7.5	7.5	0.0	0.0	0.0	0.0
Mining, Logging, and Construction	1.3	1.3	1.3	0.0	0.0	0.0	0.0
Manufacturing ^d	6.2	6.2	6.2	0.0	0.0	0.0	0.0
Service-Providing (Private)	32.8	33.4	32.4	-0.6	0.4	-1.8	1.2
Trade, Transportation, and Utilities	9.1	9.1	9.0	0.0	0.1	0.0	1.1
Wholesale Trade	1.7	1.7	1.7	0.0	0.0	0.0	0.0
Retail Trade	4.9	4.9	4.8	0.0	0.1	0.0	2.1
Transportation, Warehousing, and Utilities	2.5	2.5	2.5	0.0	0.0	0.0	0.0
Financial Activities	3.3	3.4	3.3	-0.1	0.0	-2.9	0.0
Professional and Business Services	5.6	6.0	5.5	-0.4	0.1	-6.7	1.8
Educational and Health Services	7.7	7.8	7.8	-0.1	-0.1	-1.3	-1.3
Leisure and Hospitality	5.1	5.1	4.8	0.0	0.3	0.0	6.3
Other Services	1.9	1.9	1.9	0.0	0.0	0.0	0.0
Government	6.7	6.8	6.4	-0.1	0.3	-1.5	4.7
Federal Government	0.5	0.5	0.5	0.0	0.0	0.0	0.0
State Government	0.2	0.2	0.2	0.0	0.0	0.0	0.0
Local Government	6.0	6.1	5.7	-0.1	0.3	-1.6	5.3
Local Government Educational Services	3.7	3.6	3.4	0.1	0.3	2.8	8.8

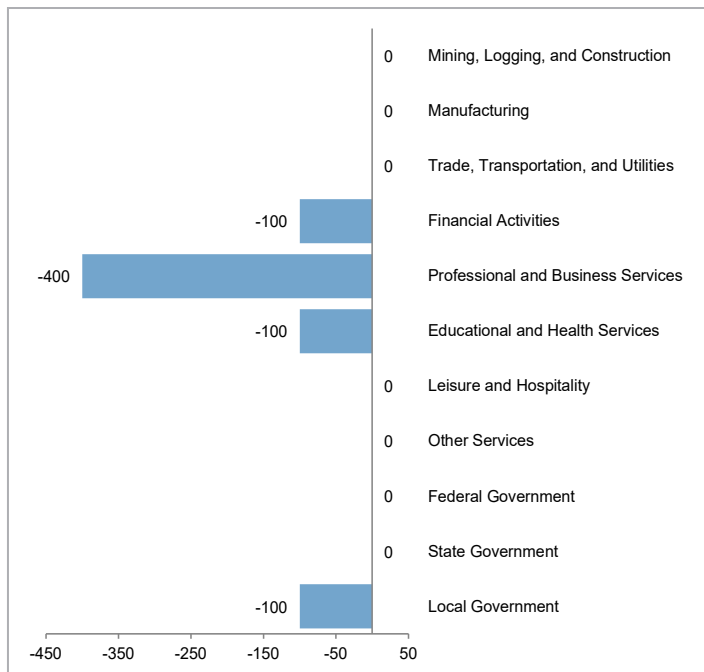
^aSee Technical Notes for concepts. ^bPreliminary. ^cRevised. ^dIncludes wood products; nonmetallic mineral products; primary metals; fabricated metal products; computer and electronic products; electrical equipment and appliance manufacturing; furniture and related products; miscellaneous manufacturing; food manufacturing; beverage and tobacco products; textile mills; textile product mills; apparel manufacturing; leather and allied products; paper manufacturing; printing and related support activities; petroleum and coal products; chemical manufacturing; plastics and rubber products.

Springfield Metropolitan Statistical Area Not Seasonally Adjusted

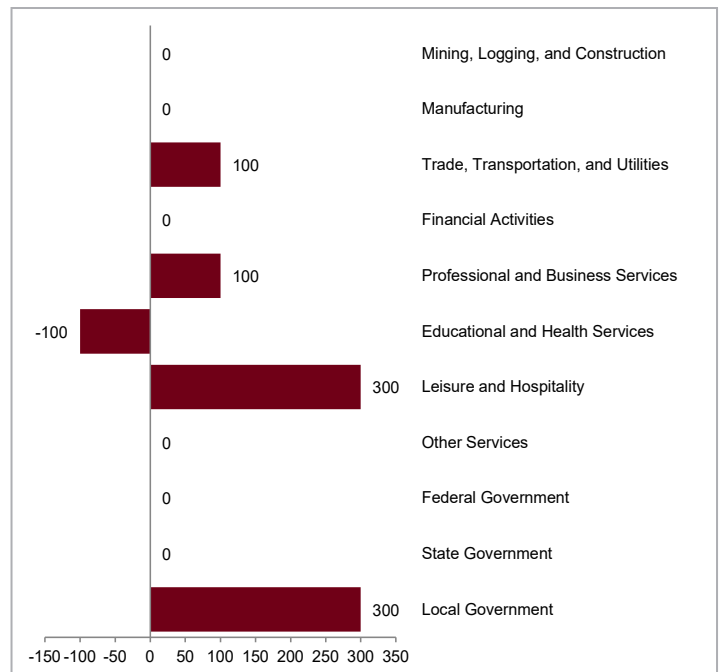
Unemployment Rates



Springfield MSA Over-the-Month Change



Springfield MSA Over-the-Year Change



Toledo Metropolitan Statistical Area Not Seasonally Adjusted

Fulton, Lucas, and Wood Counties

Over-the-Month Change: Nonfarm payroll employment in the Toledo metropolitan area totaled 291,700 in August 2021, an increase of 1,300 jobs from July. Employment in goods-producing industries, at 61,900, increased 300 with gains in mining, logging, and construction (+200) and manufacturing (+100). Private service-providing employment, at 189,700, increased 900 as gains in professional and business services (+1,000), trade, transportation, and utilities (+100), and leisure and hospitality (+100) outpaced losses in educational and health services (-200) and financial activities (-100). Government employment, at 40,100, increased 100 as gains in state government (+200) surpassed losses in local government (-100). Federal government employment did not change over the month.



Over-the-Year Change: Nonagricultural wage and salary employment increased 5,000 from August 2020 to August 2021. Employment in goods-producing industries increased 2,300 with gains in mining, logging, and construction (+1,600) and manufacturing (+700). The private service-providing sector increased 2,600 as gains in trade, transportation, and utilities (+2,600), leisure and hospitality (+1,500), and information (+100) outweighed losses in educational and health services (-1,300), financial activities (-200), and professional and business services (-100). Government employment increased 100 as gains in local government (+1,100) surpassed losses in federal (-700) and state (-300) government.

Civilian Labor Force (thousands)			Unemployment Rate
Total	Employed	Unemployed	
303.5	274.7	28.8	9.5%
301.6	277.6	24.0	7.9%
302.1	277.2	24.8	8.2%
301.2	282.8	18.4	6.1%
301.8	286.4	15.4	5.1%
304.9	289.9	15.1	4.9%
304.6	287.9	16.6	5.5%
303.5	288.7	14.8	4.9%
305.7	292.2	13.5	4.4%
300.8	272.5	28.3	9.4%
2020			
301.9	268.5	33.4	11.1%
306.4	276.2	30.2	9.9%
302.4	278.6	23.7	7.9%
297.4	282.4	14.9	5.0%
296.8	282.3	14.5	4.9%
293.4	277.9	15.4	5.3%
2021			
293.0	274.1	18.9	6.4%
296.2	277.7	18.5	6.2%
296.2	279.9	16.3	5.5%
296.6	279.9	16.8	5.6%
284.4	267.8	16.6	5.8%
288.3	268.0	20.3	7.0%
290.8	269.9	20.9	7.2%
293.1	276.1	17.1	5.8%

2011
2012
2013
2014
2015
2016
2017
2018
2019
2020
2020
July
August
September
October
November
December
2021
January
February
March
April
May
June
July
August

Nonagricultural Wage and Salary Employment (thousands)					
Total	Mfg.	Trade, Transport, and Utilities	Professional and Business Services	Educational and Health Services	Government
285.9	37.1	54.8	32.6	50.2	45.1
291.8	38.7	55.2	32.9	50.6	45.4
295.2	40.0	55.5	34.4	51.2	45.3
299.4	42.2	56.5	36.2	50.2	45.3
304.8	43.8	58.1	37.0	50.0	45.7
310.2	44.6	59.2	37.4	50.6	45.7
307.8	43.0	58.5	36.9	51.0	45.2
310.1	45.2	57.6	37.1	51.1	45.1
311.4	46.8	56.6	36.6	50.9	45.3
286.7	43.8	54.6	32.3	48.2	42.6
2020					
281.6	44.5	54.6	31.5	47.5	37.3
286.7	45.3	54.5	32.3	47.9	40.0
291.5	46.3	54.6	32.5	48.7	43.1
294.3	46.2	56.1	32.9	48.8	43.4
294.0	46.2	57.1	33.0	48.3	43.4
290.3	46.5	58.2	32.7	47.1	42.6
2021					
283.3	46.0	56.1	31.5	46.7	41.7
286.1	46.0	55.8	32.7	47.2	42.5
287.2	46.3	56.0	32.2	47.1	42.9
287.6	45.4	56.3	32.2	46.7	43.2
291.1	45.6	56.2	33.0	46.8	41.8
291.5	46.2	56.6	32.4	46.2	40.6
290.4	45.9	57.0	31.2	46.8	40.0
291.7	46.0	57.1	32.2	46.6	40.1

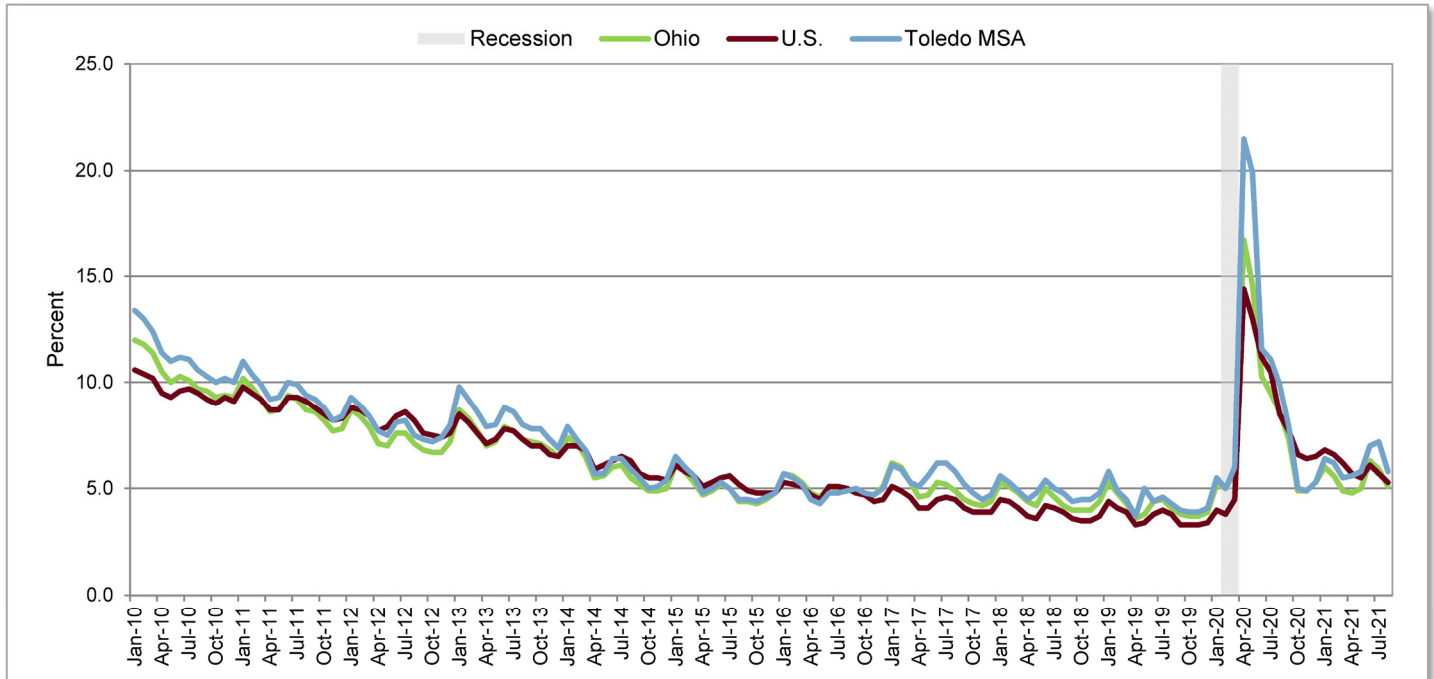
Toledo MSA **Nonagricultural Wage and Salary Employment^a** **Not Seasonally Adjusted**

	Employment (thousands)			Change (thousands)		Percent Change	
	Aug 2021 ^b	Jul 2021 ^c	Aug 2020 ^c	From Last Month	From Last Year	From Last Month	From Last Year
Total Nonagricultural	291.7	290.4	286.7	1.3	5.0	0.4	1.7
Total Private	251.6	250.4	246.7	1.2	4.9	0.5	2.0
Goods-Producing (Private)	61.9	61.6	59.6	0.3	2.3	0.5	3.9
Mining, Logging, and Construction	15.9	15.7	14.3	0.2	1.6	1.3	11.2
Manufacturing	46.0	45.9	45.3	0.1	0.7	0.2	1.5
Durable Goods ^d	37.1	36.9	35.2	0.2	1.9	0.5	5.4
Transportation Equipment	19.5	19.1	17.5	0.4	2.0	2.1	11.4
Service-Providing (Private)	189.7	188.8	187.1	0.9	2.6	0.5	1.4
Trade, Transportation, and Utilities	57.1	57.0	54.5	0.1	2.6	0.2	4.8
Wholesale Trade	12.0	12.1	11.7	-0.1	0.3	-0.8	2.6
Retail Trade	31.0	30.8	29.0	0.2	2.0	0.6	6.9
General Merchandise Stores	7.0	6.9	6.8	0.1	0.2	1.4	2.9
Transportation, Warehousing, and Utilities	14.1	14.1	13.8	0.0	0.3	0.0	2.2
Transportation and Warehousing	13.2	13.2	13.1	0.0	0.1	0.0	0.8
Information	3.0	3.0	2.9	0.0	0.1	0.0	3.4
Financial Activities	10.8	10.9	11.0	-0.1	-0.2	-0.9	-1.8
Professional and Business Services	32.2	31.2	32.3	1.0	-0.1	3.2	-0.3
Professional, Scientific, and Technical Services	9.9	9.6	10.0	0.3	-0.1	3.1	-1.0
Administrative, Support and Waste Services	16.4	15.8	15.9	0.6	0.5	3.8	3.1
Educational and Health Services	46.6	46.8	47.9	-0.2	-1.3	-0.4	-2.7
Health Care and Social Assistance	42.9	43.1	44.1	-0.2	-1.2	-0.5	-2.7
Hospitals	14.1	14.0	13.7	0.1	0.4	0.7	2.9
Leisure and Hospitality	29.7	29.6	28.2	0.1	1.5	0.3	5.3
Accommodation and Food Services	24.4	24.3	23.9	0.1	0.5	0.4	2.1
Other Services	10.3	10.3	10.3	0.0	0.0	0.0	0.0
Government	40.1	40.0	40.0	0.1	0.1	0.3	0.3
Federal Government	2.0	2.0	2.7	0.0	-0.7	0.0	-25.9
State Government	11.2	11.0	11.5	0.2	-0.3	1.8	-2.6
State Government Educational ^e Services	7.1	7.0	7.4	0.1	-0.3	1.4	-4.1
Local Government	26.9	27.0	25.8	-0.1	1.1	-0.4	4.3
Local Government Educational Services	15.2	15.3	14.1	-0.1	1.1	-0.7	7.8

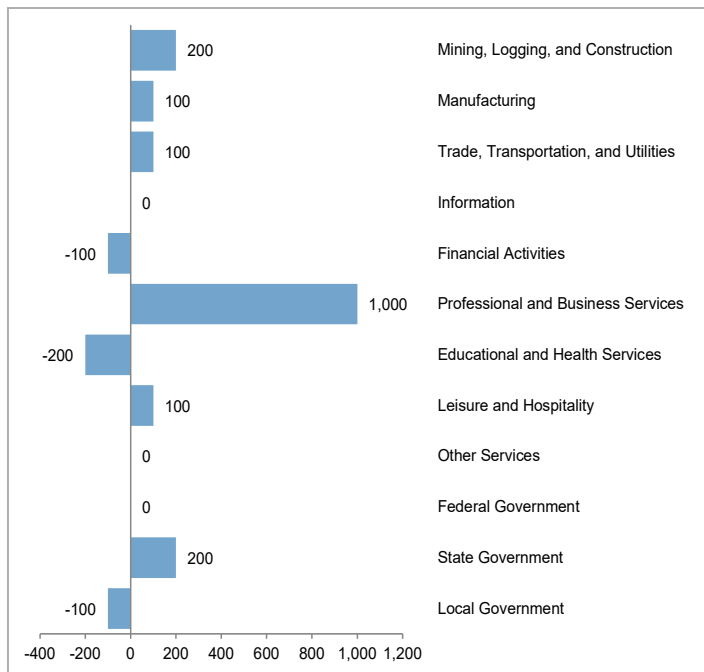
^aSee Technical Notes for concepts. ^bPreliminary. ^cRevised. ^dIncludes wood products; nonmetallic mineral products; primary metals; fabricated metal products; machinery manufacturing; computer and electronic products; electrical equipment and appliance manufacturing; furniture and related products; miscellaneous manufacturing. ^eIncludes state universities. Excludes the agricultural extension service.

Toledo Metropolitan Statistical Area Not Seasonally Adjusted

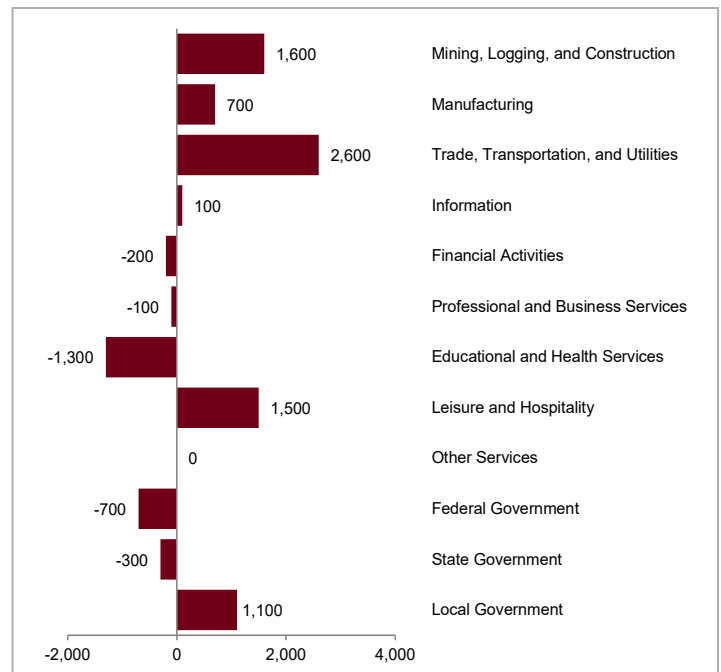
Unemployment Rates



Toledo MSA Over-the-Month Change



Toledo MSA Over-the-Year Change



Weirton-Steubenville Metropolitan Statistical Area Not Seasonally Adjusted

In Ohio: Jefferson County

In West Virginia: Brooke and Hancock Counties

Over-the-Month Change: Nonfarm payroll employment in the Weirton-Steubenville metropolitan area totaled 38,600 in August 2021, a decrease of 200 jobs from July. Goods-producing industries, at 6,100, increased 100 in mining, logging, and construction. Private service-providing employment, at 25,800, decreased 100 in scattered industries. Government employment, at 6,700, decreased 200 over the month. Local government lost 100 jobs.

Over-the-Year Change: Nonagricultural wage and salary employment increased 700 from August 2020 to August 2021. Goods-producing industries increased 100 in manufacturing. Private service-providing employment increased 700 as gains in trade, transportation, and utilities (+400), leisure and hospitality (+400), and educational and health services (+200) outpaced losses in scattered industries (-300). Government employment decreased 100 over the year.



Civilian Labor Force (thousands)			Unemployment Rate
Total	Employed	Unemployed	
56.5	50.2	6.3	11.1%
55.7	50.1	5.5	9.9%
54.4	49.2	5.2	9.5%
53.3	49.1	4.2	7.9%
52.8	48.9	3.9	7.5%
51.9	47.9	4.1	7.8%
50.6	47.2	3.4	6.8%
50.7	47.6	3.1	6.1%
51.1	48.3	2.8	5.6%
50.5	45.5	5.0	9.9%
2020			
51.3	45.4	5.9	11.4%
51.4	45.9	5.5	10.8%
50.6	46.1	4.6	9.0%
49.7	46.4	3.3	6.7%
50.0	46.7	3.3	6.7%
49.7	46.1	3.7	7.4%
2021			
49.7	45.8	4.0	8.0%
49.9	46.1	3.8	7.6%
49.7	46.5	3.3	6.6%
50.5	47.2	3.3	6.5%
49.1	46.1	3.0	6.1%
50.5	46.6	4.0	7.8%
50.7	47.1	3.6	7.1%
50.4	47.2	3.2	6.4%

2011
2012
2013
2014
2015
2016
2017
2018
2019
2020
2020
July
August
September
October
November
December
2021
January
February
March
April
May
June
July
August

Nonagricultural Wage and Salary Employment (thousands)					
Total	Mfg.	Trade, Transport., and Utilities	Professional and Business Services	Educational and Health Services	Government
43.9	6.4	8.7	1.9	9.3	6.2
43.7	6.2	8.6	1.9	9.2	6.1
42.9	5.6	8.6	1.9	9.2	6.0
42.6	5.5	8.7	1.9	9.1	5.9
42.3	5.5	8.9	1.9	8.9	6.0
40.9	5.4	8.8	1.8	9.0	6.0
40.1	5.2	8.4	2.0	9.0	6.1
40.4	5.3	8.4	2.1	9.0	6.3
40.7	5.5	8.3	2.2	8.9	6.5
37.9	4.6	7.8	1.9	8.7	6.7
2020					
37.6	4.5	7.8	2.0	8.5	6.6
37.9	4.4	7.8	1.9	8.6	6.8
37.9	4.4	7.8	1.9	8.8	6.7
38.0	4.4	7.7	1.9	8.9	6.8
38.5	4.4	8.0	1.9	9.0	6.8
38.1	4.5	8.3	1.9	8.9	6.7
2021					
37.4	4.4	8.0	1.8	8.8	6.6
37.6	4.5	7.8	1.8	8.9	6.8
37.9	4.5	7.9	1.8	8.9	6.8
38.2	4.4	7.8	1.9	8.9	6.8
38.6	4.5	7.8	1.9	8.8	6.9
38.7	4.5	8.0	1.9	8.7	7.0
38.8	4.5	8.2	1.9	8.8	6.9
38.6	4.5	8.2	1.9	8.8	6.7

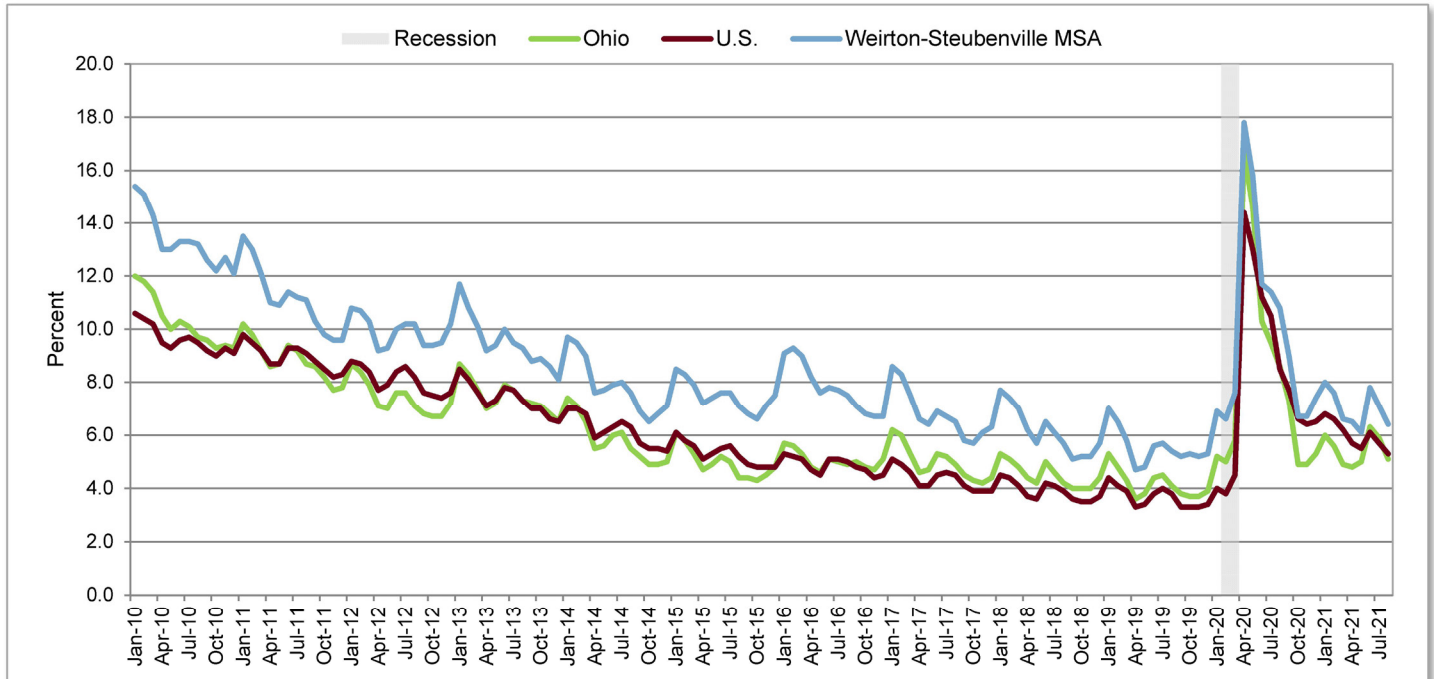
Weirton-Steubenville MSA Nonagricultural Wage and Salary Employment^a Not Seasonally Adjusted

	Employment (thousands)			Change (thousands)		Percent Change	
	Aug 2021 ^b	Jul 2021 ^c	Aug 2020 ^c	From Last Month	From Last Year	From Last Month	From Last Year
Total Nonagricultural	38.6	38.8	37.9	-0.2	0.7	-0.5	1.8
Total Private	31.9	31.9	31.1	0.0	0.8	0.0	2.6
Goods-Producing (Private)	6.1	6.0	6.0	0.1	0.1	1.7	1.7
Mining, Logging, and Construction	1.6	1.5	1.6	0.1	0.0	6.7	0.0
Manufacturing ^d	4.5	4.5	4.4	0.0	0.1	0.0	2.3
Service-Providing (Private)	25.8	25.9	25.1	-0.1	0.7	-0.4	2.8
Trade, Transportation, and Utilities	8.2	8.2	7.8	0.0	0.4	0.0	5.1
Retail Trade	4.4	4.4	4.3	0.0	0.1	0.0	2.3
Transportation, Warehousing, and Utilities	2.8	2.8	2.7	0.0	0.1	0.0	3.7
Professional and Business Services	1.9	1.9	1.9	0.0	0.0	0.0	0.0
Educational and Health Services	8.8	8.8	8.6	0.0	0.2	0.0	2.3
Leisure and Hospitality	4.5	4.5	4.1	0.0	0.4	0.0	9.8
Government	6.7	6.9	6.8	-0.2	-0.1	-2.9	-1.5
Local Government	6.0	6.1	6.1	-0.1	-0.1	-1.6	-1.6
Local Government Educational Services	3.3	3.4	3.5	-0.1	-0.2	-2.9	-5.7

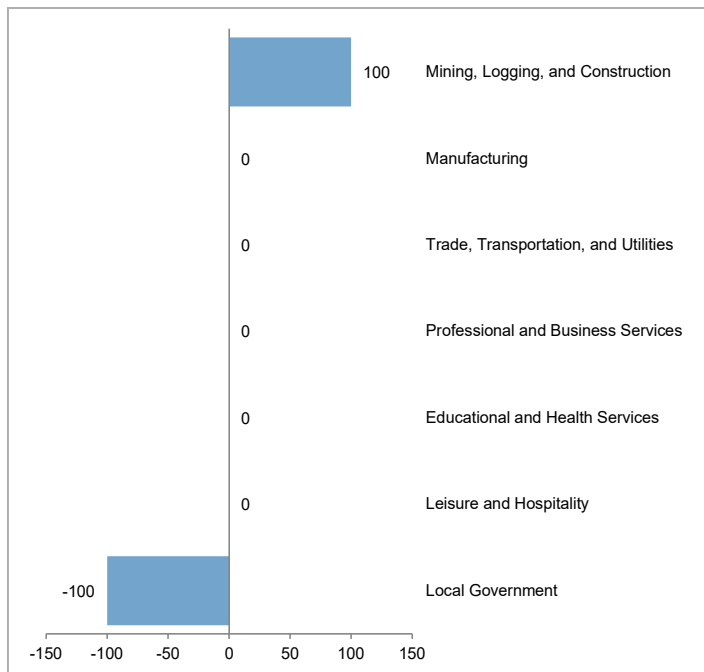
^aSee Technical Notes for concepts. ^bPreliminary. ^cRevised. ^dIncludes wood products; nonmetallic mineral products; primary metals; fabricated metal products; computer and electronic products; electrical equipment and appliance manufacturing; furniture and related products; miscellaneous manufacturing; food manufacturing; beverage and tobacco products; textile mills; textile product mills; apparel manufacturing; leather and allied products; paper manufacturing; printing and related support activities; petroleum and coal products; chemical manufacturing; plastics and rubber products.

Weirton-Steubenville Metropolitan Statistical Area Not Seasonally Adjusted

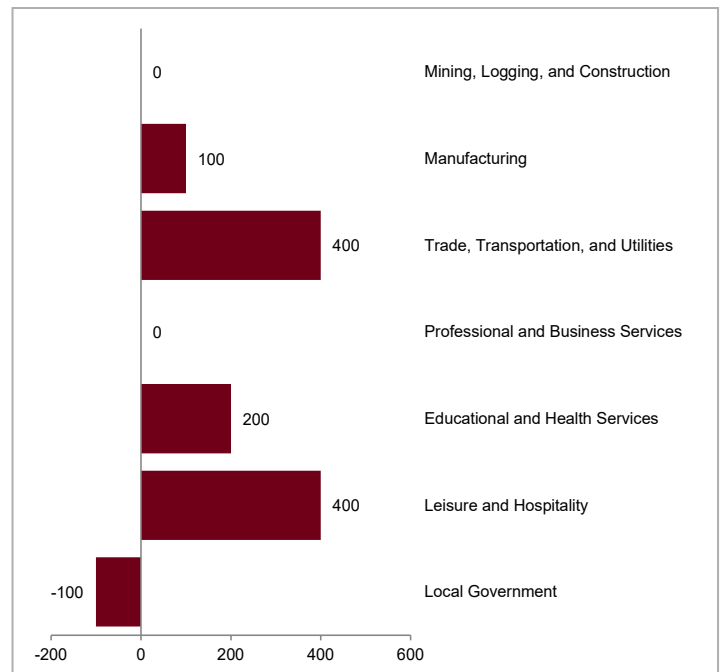
Unemployment Rates



Weirton-Steubenville MSA Over-the-Month Change



Weirton-Steubenville MSA Over-the-Year Change



Youngstown-Warren-Boardman Metropolitan Statistical Area Not Seasonally Adjusted

In Ohio: Trumbull and Mahoning Counties
In Pennsylvania: Mercer County



Over-the-Month Change: Nonfarm payroll employment in the Youngstown-Warren-Boardman metropolitan area totaled 199,400 in August 2021, a decrease of 700 jobs from July. Employment in goods-producing industries, at 32,600, decreased 100 in manufacturing. Employment in the private service-providing sector, at 140,600, decreased 500 with losses in professional and business services (-200), leisure and hospitality (-200), and trade, transportation, and utilities (-100). Government employment, at 26,200, decreased 100 in local government. Federal and state government employment did not change over the month.

Over-the-Year Change: Nonagricultural wage and salary employment increased 1,800 from August 2020 to August 2021. Goods-producing industries increased 300 as gains in mining, logging, and construction (+400) exceeded losses in manufacturing (-100). Private service-providing employment increased 1,000 as gains in leisure and hospitality (+1,800), trade, transportation, and utilities (+400), information (+100), and other services (+100) outpaced losses in professional and business services (-700), educational and health services (-600), and financial activities (-100). Government employment increased 500 as gains in local (+700) and state (+100) government outweighed losses in federal government (-300).

Civilian Labor Force (thousands)			Unemployment Rate
Total	Employed	Unemployed	
263.0	237.5	25.5	9.7%
259.9	238.2	21.8	8.4%
257.5	235.6	21.9	8.5%
254.1	237.0	17.1	6.7%
252.1	236.5	15.5	6.2%
249.8	233.7	16.1	6.5%
245.6	229.1	16.5	6.7%
242.3	228.3	14.1	5.8%
239.2	225.5	13.6	5.7%
234.5	210.7	23.8	10.2%
2020			
238.7	208.9	29.8	12.5%
238.3	211.5	26.8	11.2%
234.6	213.8	20.8	8.9%
229.8	216.0	13.8	6.0%
231.1	217.1	13.9	6.0%
228.4	213.3	15.1	6.6%
2021			
229.3	211.3	18.0	7.9%
231.7	213.6	18.1	7.8%
230.4	214.7	15.7	6.8%
229.8	214.2	15.6	6.8%
219.0	205.4	13.6	6.2%
225.0	208.0	17.0	7.6%
225.6	208.7	16.9	7.5%
226.2	210.9	15.3	6.8%

2011
2012
2013
2014
2015
2016
2017
2018
2019
2020
2020
July
August
September
October
November
December
2021
January
February
March
April
May
June
July
August

Nonagricultural Wage and Salary Employment (thousands)					
Total	Mfg.	Trade, Transport, and Utilities	Professional and Business Services	Educational and Health Services	Government
223.4	30.4	45.9	22.1	43.8	30.5
225.4	30.9	46.5	23.4	43.1	30.1
225.4	30.2	47.0	23.9	42.6	29.8
225.5	30.5	47.3	23.5	42.7	29.8
225.8	30.6	47.8	22.2	43.5	29.8
224.0	29.3	47.1	21.9	43.8	29.5
219.9	27.4	46.0	20.5	43.8	29.7
219.9	27.6	45.6	20.4	43.9	29.5
216.7	25.9	45.1	19.9	43.9	29.3
198.9	23.1	42.3	18.2	41.4	27.5
2020					
196.8	22.8	42.2	18.1	40.2	25.5
197.6	22.7	42.2	18.1	40.8	25.7
200.2	22.5	42.6	18.3	41.3	27.5
201.7	22.6	43.3	18.3	41.5	27.7
203.4	22.6	44.2	18.6	41.8	27.8
200.3	22.7	44.1	18.0	41.6	27.0
2021					
196.6	22.7	43.2	18.2	40.2	27.2
198.2	22.7	42.8	17.8	40.8	27.4
198.2	23.0	42.6	17.7	40.6	27.3
198.5	22.6	42.6	17.3	40.0	27.1
198.8	22.7	42.4	17.5	40.1	26.5
201.2	22.8	42.5	17.7	40.3	26.5
200.1	22.7	42.7	17.6	40.2	26.3
199.4	22.6	42.6	17.4	40.2	26.2

Youngstown-Warren-Boardman MSA

Nonagricultural Wage and Salary Employment^a

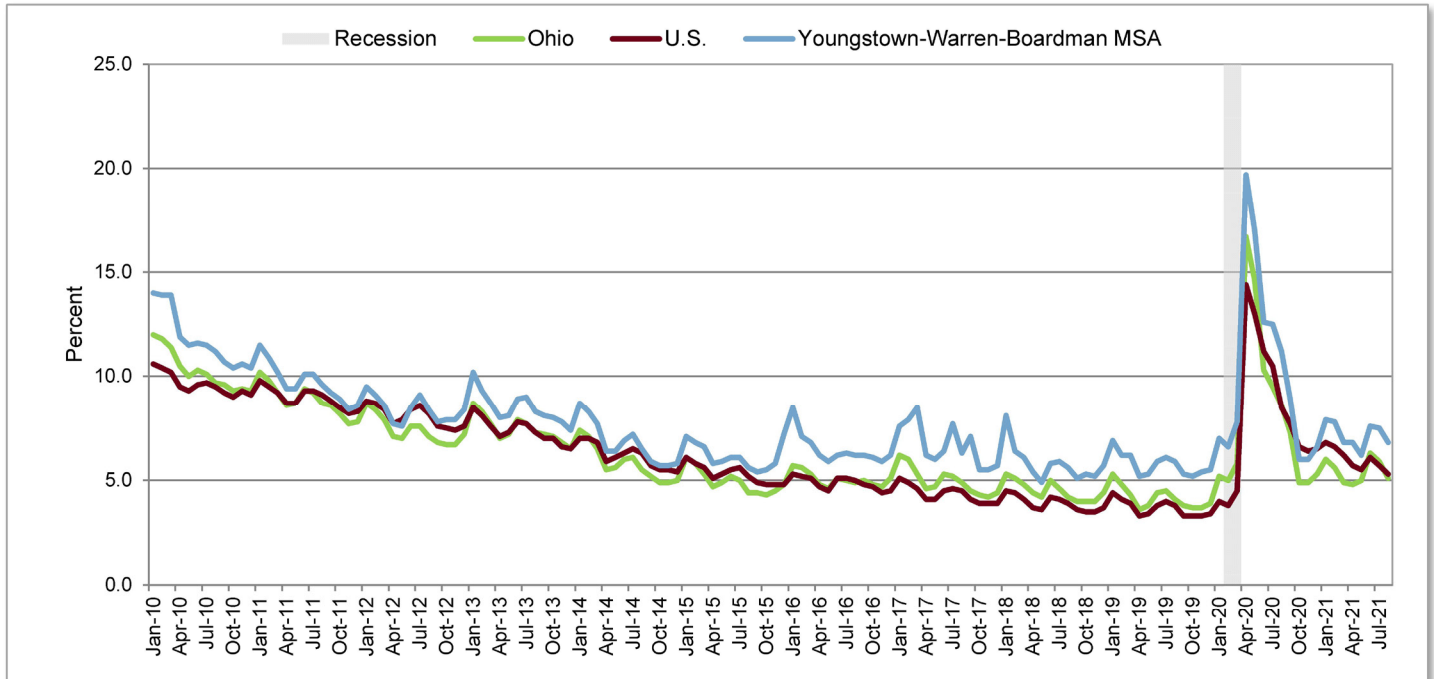
Not Seasonally Adjusted

	Employment (thousands)			Change (thousands)		Percent Change	
	Aug 2021 ^b	Jul 2021 ^c	Aug 2020 ^c	From Last Month	From Last Year	From Last Month	From Last Year
Total Nonagricultural	199.4	200.1	197.6	-0.7	1.8	-0.3	0.9
Total Private	173.2	173.8	171.9	-0.6	1.3	-0.3	0.8
Goods-Producing (Private)	32.6	32.7	32.3	-0.1	0.3	-0.3	0.9
Mining, Logging, and Construction	10.0	10.0	9.6	0.0	0.4	0.0	4.2
Manufacturing ^d	22.6	22.7	22.7	-0.1	-0.1	-0.4	-0.4
Durable Goods	18.6	18.5	18.5	0.1	0.1	0.5	0.5
Service-Providing (Private)	140.6	141.1	139.6	-0.5	1.0	-0.4	0.7
Trade, Transportation, and Utilities	42.6	42.7	42.2	-0.1	0.4	-0.2	0.9
Wholesale Trade	7.9	8.0	7.9	-0.1	0.0	-1.3	0.0
Retail Trade	26.6	26.7	26.8	-0.1	-0.2	-0.4	-0.7
General Merchandise Stores	5.3	5.3	5.5	0.0	-0.2	0.0	-3.6
Transportation, Warehousing, and Utilities	8.1	8.0	7.5	0.1	0.6	1.3	8.0
Information	1.6	1.6	1.5	0.0	0.1	0.0	6.7
Financial Activities	6.8	6.8	6.9	0.0	-0.1	0.0	-1.4
Financial and Insurance	4.7	4.7	4.8	0.0	-0.1	0.0	-2.1
Professional and Business Services	17.4	17.6	18.1	-0.2	-0.7	-1.1	-3.9
Educational and Health Services	40.2	40.2	40.8	0.0	-0.6	0.0	-1.5
Health Care and Social Assistance	37.3	37.3	38.2	0.0	-0.9	0.0	-2.4
Hospitals	8.8	8.8	8.7	0.0	0.1	0.0	1.1
Leisure and Hospitality	23.4	23.6	21.6	-0.2	1.8	-0.8	8.3
Other Services	8.6	8.6	8.5	0.0	0.1	0.0	1.2
Government	26.2	26.3	25.7	-0.1	0.5	-0.4	1.9
Federal Government	1.9	1.9	2.2	0.0	-0.3	0.0	-13.6
State Government	4.2	4.2	4.1	0.0	0.1	0.0	2.4
State Government Educational ^e Services	1.7	1.8	1.7	-0.1	0.0	-5.6	0.0
Local Government	20.1	20.2	19.4	-0.1	0.7	-0.5	3.6
Local Government Educational Services	10.9	11.0	10.7	-0.1	0.2	-0.9	1.9

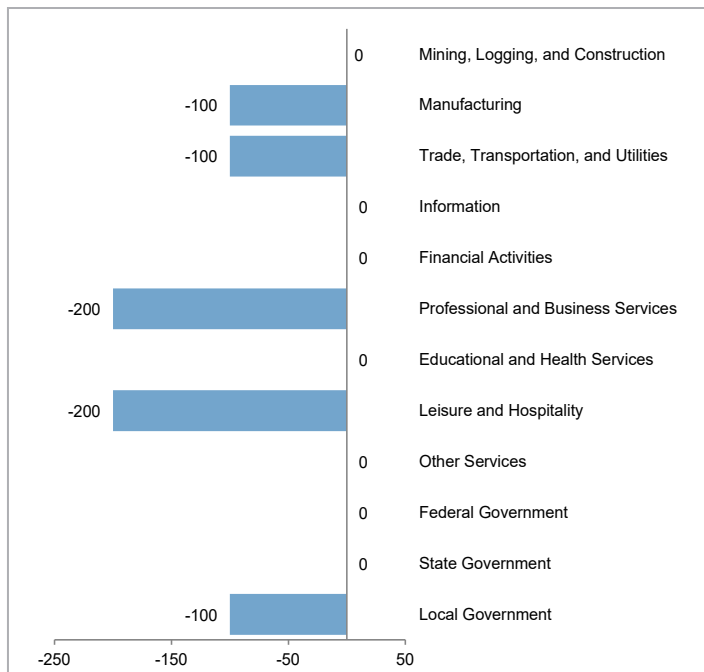
^aSee Technical Notes for concepts. ^bPreliminary. ^cRevised. ^dIncludes wood products; nonmetallic mineral products; fabricated metal products; machinery manufacturing; computer and electronic products; electrical equipment and appliance manufacturing; furniture and related products; miscellaneous manufacturing; food manufacturing; beverage and tobacco products; textile mills; textile product mills; apparel manufacturing; leather and allied products; paper manufacturing; printing and related support activities; petroleum and coal products; chemical manufacturing; plastics and rubber products. ^eIncludes state universities. Excludes the agricultural extension service and agricultural research centers.

Youngstown-Warren-Boardman Metropolitan Statistical Area Not Seasonally Adjusted

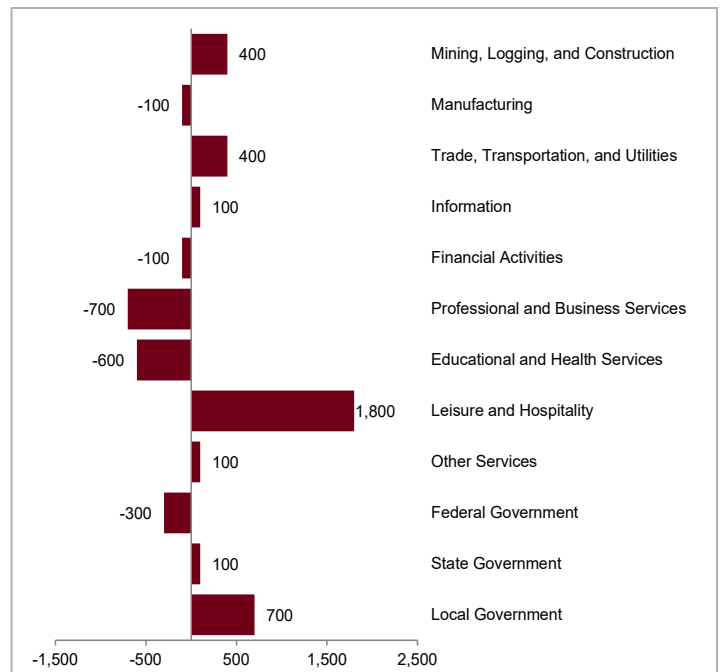
Unemployment Rates



Youngstown-Warren-Boardman MSA Over-the-Month Change



Youngstown-Warren-Boardman MSA Over-the-Year Change



Ohio and Metropolitan Statistical Areas

Hours and Earnings of All Employees^a

Not Seasonally Adjusted

In August, Ohio's total private employees' average weekly earnings were \$965.70, an increase of \$17.29 from July and \$55.68 from August 2020. The average workweek was 34.7 hours in August, up 0.3 hours from July yet down 0.1 hours from one year ago. Average hourly earnings increased by 26 cents from July to \$27.83. Over the year, average hourly earnings have risen by 6.4%.

	Average Weekly Earnings			Average Weekly Hours			Average Hourly Earnings		
	Aug 2021 ^b	Jul 2021 ^c	Aug 2020 ^c	Aug 2021 ^b	Jul 2021 ^c	Aug 2020 ^c	Aug 2021 ^b	Jul 2021 ^c	Aug 2020 ^c
Ohio									
Total Private	\$965.70	\$948.41	\$910.02	34.7	34.4	34.8	\$27.83	\$27.57	\$26.15
Goods-Producing (Private)	\$1,187.11	\$1,169.91	\$1,175.28	40.2	40.3	41.5	\$29.53	\$29.03	\$28.32
Construction	\$1,240.86	\$1,187.58	\$1,227.66	38.5	38.1	39.5	\$32.23	\$31.17	\$31.08
Manufacturing	\$1,146.43	\$1,144.89	\$1,134.42	40.9	40.7	42.0	\$28.03	\$28.13	\$27.01
Service-Providing (Private)	\$912.82	\$892.91	\$843.39	33.4	32.9	33.1	\$27.33	\$27.14	\$25.48
Trade, Transportation, and Utilities	\$896.15	\$872.83	\$842.30	34.1	33.7	33.8	\$26.28	\$25.90	\$24.92
Financial Activities	\$1,506.10	\$1,484.51	\$1,404.17	37.4	36.8	38.8	\$40.27	\$40.34	\$36.19
Professional and Business Services	\$1,075.42	\$1,049.31	\$1,045.36	36.1	35.2	36.5	\$29.79	\$29.81	\$28.64
Educational and Health Services	\$797.26	\$798.59	\$757.36	33.4	33.4	32.9	\$23.87	\$23.91	\$23.02
Leisure and Hospitality	\$389.06	\$373.32	\$346.56	24.5	23.9	24.1	\$15.88	\$15.62	\$14.38
Other Services	\$771.66	\$764.01	\$697.68	31.9	31.9	30.6	\$24.19	\$23.95	\$22.80
Metropolitan Statistical Area (MSA)									
Total Private									
Akron	\$1,034.53	\$990.03	\$891.30	35.2	34.4	34.6	\$29.39	\$28.78	\$25.76
Canton-Massillon	\$918.98	\$906.54	\$856.13	34.6	34.8	34.3	\$26.56	\$26.05	\$24.96
Cincinnati	\$995.35	\$977.04	\$965.35	34.9	34.5	34.8	\$28.52	\$28.32	\$27.74
Cleveland-Elyria	\$1,010.80	\$987.97	\$961.19	35.0	34.4	34.7	\$28.88	\$28.72	\$27.70
Columbus	\$954.74	\$915.52	\$907.58	35.4	34.6	34.8	\$26.97	\$26.46	\$26.08
Dayton	\$1,021.90	\$998.59	\$929.91	34.2	33.6	34.1	\$29.88	\$29.72	\$27.27
Lima	\$744.03	\$752.77	\$743.25	31.5	31.3	32.8	\$23.62	\$24.05	\$22.66
Mansfield	\$801.14	\$791.14	\$786.62	36.8	36.9	37.0	\$21.77	\$21.44	\$21.26
Springfield	\$689.49	\$686.76	\$769.78	31.1	30.7	34.8	\$22.17	\$22.37	\$22.12
Toledo	\$841.92	\$838.84	\$902.17	32.0	32.4	34.9	\$26.31	\$25.89	\$25.85
Weirton-Steubenville	\$677.65	\$693.26	\$680.65	32.8	33.9	33.3	\$20.66	\$20.45	\$20.44
Youngstown-Warren-Boardman	\$796.61	\$792.05	\$795.79	34.5	34.8	35.4	\$23.09	\$22.76	\$22.48

^aSee Technical Notes for concepts. ^bPreliminary. ^cRevised.

Ohio and Metropolitan Statistical Areas

Hours and Earnings of Production or Nonsupervisory Employees^a

Not Seasonally Adjusted

Ohio's production employees in manufacturing industries earned an average of \$959.48 per week in August 2021, an increase of \$16.65 from July and \$75.53 from one year ago. The average workweek of 41.5 hours in August increased 0.4 hours over the month; however, did not change over the year. Average weekly earnings in durable goods, at \$996.51, increased \$16.00 over the month and \$66.76 over the year. Average weekly earnings in nondurable goods, at \$888.40, increased \$17.27 over the month and \$92.80 over the year.

	Average Weekly Earnings			Average Weekly Hours			Average Hourly Earnings		
	Aug 2021 ^b	Jul 2021 ^c	Aug 2020 ^c	Aug 2021 ^b	Jul 2021 ^c	Aug 2020 ^c	Aug 2021 ^b	Jul 2021 ^c	Aug 2020 ^c
Ohio									
Goods-Producing (Private)
Construction	\$1,264.69	\$1,171.17	\$1,231.31	40.2	39.0	41.5	\$31.46	\$30.03	\$29.67
Manufacturing	\$959.48	\$942.83	\$883.95	41.5	41.1	41.5	\$23.12	\$22.94	\$21.30
Durable Goods^d	\$996.51	\$980.51	\$929.75	42.1	41.6	42.3	\$23.67	\$23.57	\$21.98
Fabricated Metal Products	\$913.54	\$907.33	\$803.20	41.6	41.0	40.2	\$21.96	\$22.13	\$19.98
Transportation Equipment	\$1,336.82	\$1,315.28	\$1,242.60	48.7	47.5	45.6	\$27.45	\$27.69	\$27.25
Nondurable Goods^e	\$888.40	\$871.13	\$795.60	40.4	40.2	40.0	\$21.99	\$21.67	\$19.89
Service-Providing (Private)
Wholesale Trade	\$1,034.11	\$999.10	\$934.02	38.5	38.8	36.4	\$26.86	\$25.75	\$25.66
Merchant Wholesalers, Durable Goods	\$1,048.61	\$988.94	\$934.22	39.6	39.4	38.7	\$26.48	\$25.10	\$24.14
Retail Trade^f	\$567.34	\$541.01	\$528.35	30.8	30.6	30.4	\$18.42	\$17.68	\$17.38
Financial Activities	\$1,098.31	\$1,097.64	\$1,079.57	36.2	36.0	37.8	\$30.34	\$30.49	\$28.56
Health Care and Social Assistance	\$734.82	\$729.14	\$656.56	33.1	32.8	32.2	\$22.20	\$22.23	\$20.39
Metropolitan Statistical Area (MSA)									
Cincinnati
Manufacturing	\$1,225.80	\$1,155.15	\$1,019.28	46.1	45.3	43.3	\$26.59	\$25.50	\$23.54
Cleveland-Elyria
Manufacturing	\$924.80	\$900.32	\$795.55	42.5	40.5	38.6	\$21.76	\$22.23	\$20.61
Durable Goods	\$974.40	\$931.81	\$824.06	42.0	39.5	38.4	\$23.20	\$23.59	\$21.46
Columbus
Manufacturing	\$786.42	\$711.65	\$707.04	37.7	35.3	36.0	\$20.86	\$20.16	\$19.64

^aSee Technical Notes for concepts. ^bPreliminary. ^cRevised. ^dIncludes wood products; miscellaneous manufacturing. ^eIncludes textile mills; textile products mills; apparel manufacturing; leather and allied products; petroleum and coal products. ^fMoney payments only; tips not included.

Ohio**Selected Unemployment Insurance Activities
Not Seasonally Adjusted**

Initial claims filed under the Ohio Unemployment Compensation Law numbered 47,133 in August 2021, up 3.5% from July and down 36.6% from August 2020. The average weekly number of benefit recipients, at 41,584 increased 9.7% from the previous month but is down 85.7% from the previous year. Total benefits paid, at \$66.7 million were up 11.4% from July. The average weekly benefit payment of \$373.95 in August 2021 increased \$53.20 from August 2020. At the end of August 2021, there were 248,712 active employer accounts, up 2,736 from July and up 10,338 from August 2020.

	Aug 2021	Jul 2021	Aug 2020	Change From		Percent Change From	
				Last Month	Last Year	Last Month	Last Year
Initial Claims	47,133	45,526	74,285	1,607	-27,152	3.5	-36.6
Continued Claims	249,507	252,011	1,546,842	-2,504	-1,297,335	-1.0	-83.9
First Payments	8,205	8,451	24,643	-246	-16,438	-2.9	-66.7
Last Payments	3,807	3,043	10,691	764	-6,884	25.1	-64.4
Average Weekly Claimants	56,706	57,275	368,296	-569	-311,590	-1.0	-84.6
Average Weekly Benefit Recipients	41,584	37,910	291,739	3,674	-250,155	9.7	-85.7
Paid Weeks of Claims	182,969	166,804	1,225,304	16,165	-1,042,335	9.7	-85.1
Benefits Paid	\$66,739,753	\$59,930,313	\$377,661,019	\$6,809,440	-\$310,921,266	11.4	-82.3
Average Weekly Payment	\$373.95	\$368.19	\$320.75	\$5.75	\$53.20	1.6	16.6
Continued Claims for Survey Week	56,303	67,610	321,128	-11,307	-264,825	-16.7	-82.5
Insured Unemployment Rate	TBD	1.1%	6.9%				
Active Employer Accounts	248,712	245,976	238,374	2,736	10,338	1.1	4.3

Source: ODJFS, Office of Unemployment Compensation.

Technical Notes

Except as noted, all data cited are produced by the U.S. Department of Labor, Bureau of Labor Statistics, in cooperation with the Ohio Department of Job and Family Services.

Civilian Labor Force Estimates (CLFE)

Based on the Current Population Survey (household survey) and Local Area Unemployment Statistics (LAUS) program.

Civilian Noninstitutional Population

Persons 16 years of age and older who are not inmates of institutions (for example, penal and mental facilities, homes for the aged), and who are not on active duty in the armed forces.

Civilian Labor Force

Persons in the civilian noninstitutional population, employed or unemployed during the reference week (usually the week including the 12th of the month) distributed by place of residence.

Employed

Persons in the civilian noninstitutional population who, during the reference week, (a) worked at least one hour as paid employees; worked in their own business, profession, or on their own farm, or worked 15 hours or more as unpaid workers in an enterprise operated by a member of the family; and (b) all those who were not working but who had jobs or businesses from which they were temporarily absent because of vacation, illness, bad weather, childcare problems, maternity or paternity leave, labor-management dispute, job training, or other family or personal reasons, whether or not they were paid for the time off or were seeking other jobs. Each employed person is counted only once, even if he or she holds more than one job. Excluded are persons whose only activity consisted of work around their own house (painting, repairing, or own home housework) or volunteer work for religious, charitable, and other organizations.

Unemployed

Persons in the civilian noninstitutional population who had no employment during the reference week, were available for work, except for temporary illness, and had made specific efforts to find employment sometime during the four-week period ending with the reference week. Persons who were waiting to be recalled to a job from which they had been laid off need not have been looking for work to be classified as unemployed.

Data Revisions

Figures for the current month are preliminary; revised figures are released when preliminary data for the next month are released. For example, revised March figures are released at the same time as preliminary April figures are released.

Revisions at the end of the year are called 'annual processing' and typically, adjustments are made to the previous two years for not seasonally adjusted data and five years for seasonally adjusted data. Adjustments are made because more information becomes available throughout the year on

nonfarm jobs and unemployment claims. Also, during annual processing, new population controls are incorporated into the estimates. Population controls refer to population data such as vital statistics on births, deaths, migration, school enrollment, persons living in group quarters, inmates in institutions, etc. These are updated annually by the Census Bureau and provided to the BLS.

Payroll Survey

Nonagricultural wage and salary employment, including hours and earnings estimates, are based on monthly reports from the Payroll Survey of employers under the Current Employment Statistics (CES) program. The CES survey is based on approximately 144,000 businesses and government agencies representing approximately 697,000 worksites throughout the United States.

Industrial Classification

Employer establishments are classified by industry based on their principal product or service. The North American Industry Classification System (NAICS) is used for industrial classification. (See page 51.)

Coverage

Monthly reports on employment, payroll, and hours are obtained from approximately 26,700 Ohio employers.

Estimating Method

Total employment is estimated from the employment of establishments reporting for two consecutive months, as follows:

$$\frac{\text{Sample Employment (Current Month)}}{\text{Sample Employment (Previous Month)}} \times \text{Total Employment (Previous Month)} = \text{Total Employment (Current Month)}$$

Nonagricultural or Payroll Employment

The total number of persons on establishment payrolls employed full or part time who received pay for any part of the pay period which includes the 12th day of the month. Temporary and intermittent employees are included, as are any workers who are on paid leave, or who work during only part of the specified pay period. A striking worker who only works a small portion of the survey period, and is paid, would be included as employed under the CES definitions. Persons on the payroll of more than one establishment are counted in each establishment. Data excludes proprietors, self-employed, unpaid family or volunteer workers, farm workers, and domestic workers. Persons on layoff the entire pay period, on leave without pay, on strike for the entire period or who have not yet reported for work are not counted as employed. Government employment covers only civilian workers.

Technical Notes

Hours and Earnings

Average hours are computed by dividing total production employee hours worked during one week (the seven-day period which includes the 12th of the month) by number of production employees reported for such week. Average hourly earnings are computed by dividing total production employee payroll for one week by total production employee hours for that week. Average weekly earnings are derived by multiplying average hourly earnings by average weekly hours.

Production employees include working supervisors and all nonsupervisory employees (including group leaders and trainees) engaged in fabricating, processing, assembling, inspection, receiving, storage, handling, packing, warehousing, shipping, maintenance, repair, janitorial, guard services, product development, auxiliary production for plant's own use (such as power plant), recordkeeping, and other services closely associated with production operations.

Nonsupervisory employees include employees such as office and clerical workers, repairers, salespersons, operators, drivers, attendants, service employees, line installers, laborers, accountants, janitors, guards, and other employees whose services are closely associated with those of occupations listed.

Payroll refers to dollars paid for full- and part-time production, construction, and nonsupervisory employees who received pay for any part of pay periods that include the 12th of the month. Payroll is reported before deductions for Social Security, group insurance, withholding tax, bonds, and union dues; also includes pay for overtime, holidays, vacations, and sick leave paid directly by the firm. Bonuses (unless earned and paid regularly each pay period), tips, pay not earned in pay period reported (such as retroactive pay), and value of free rent, fuel, meals, or other payments in kind, excluded.

Hours represent hours worked or paid for, during pay periods which include the 12th of the month, for production, construction, or nonsupervisory employees. Hours include time paid for holidays and vacations, and for sick leave when pay received directly from firm.

Employment Error Measures

Error measures for state and area employment estimates are available on the following website: <http://www.bls.gov/sae/790stderr.htm>.

Seasonal Adjustment

Seasonal adjustment removes the effects of events that follow a more or less regular pattern each year. These adjustments make it easier to observe the cyclical and other nonseasonal movements in a data series.

Data Revisions

Additional sample receipts are the primary source of the monthly CES employment revisions. CES begins collecting sample reports for a reference month as soon as the reference period, the establishment's pay period that includes the 12th of the month, is complete. Collection time available for first preliminary estimates ranges from two to three weeks, depending on the scheduled date for the Employment Situation news release.

Given this short collection cycle for the first preliminary estimates, many establishments are not able to provide their payroll information in time to be included in preliminary estimates. CES sample responses for the reference month continue to be collected, are incorporated into the series, and are released the following month.

Benchmarks

Sample-based estimates remain final until employment levels are reset to universe employment counts, or benchmarks; the benchmarks are primarily derived from Unemployment Insurance (UI) tax records. The annual benchmarking process results in revised data back to the last annual benchmark for not seasonally adjusted series and back five years for seasonally adjusted series.

For the establishment, or CES survey, annual benchmarks are constructed in order to realign the sample-based employment totals of each year with the Unemployment Insurance (UI) based population counts. These population counts are much less timely than sample-based estimates and are used to provide an annual point-in-time census for employment.

Types of Businesses by North American Industry Classification System

Goods-Producing (Private)

Mining and Logging

Mining and support activities, oil and gas extraction, cutting and transporting timber

Construction

Construction of buildings; heavy and civil engineering (bridges, roads); and specialty trade contractors (pouring concrete, site preparation, plumbing, painting, and electrical work)

Manufacturing

Durable Goods

Nonmetal and metal products, machinery, computers and electronics, appliances, transportation equipment, furniture, medical, and wood products

Nondurable Goods

Food, printing, chemicals (toiletries), plastics, textiles, paper, apparel, leather, petroleum, and coal products

Service-Providing (Private)

Trade, Transportation, and Utilities

Wholesale Trade

Wholesalers of durable and nondurable goods, business to business electronic markets, and sales representatives

Retail Trade

Auto dealers, building and garden supply centers, furniture, electronic, appliance, food, health, gasoline, clothing, sporting, hobby, book, and music stores

Transportation, Warehousing and Utilities

Transportation (air, rail, water, truck, transit, pipeline, scenic, and sightseeing); private postal services, couriers, warehousing, and storage; utilities (power, natural gas distribution, water, and sewage)

Information

Publishing, motion picture, sound recording, broadcasting, phone services, data processing and hosting, news, libraries, and internet

Financial Activities

Finance and Insurance

Banks, securities, insurance, funds, and trusts

Real Estate, Rental, and Leasing

Real estate agents; rental and leasing of automobiles, consumer goods, and machinery

Professional and Business Services

Professional, Scientific, and Technical Services

Legal services, accounting, bookkeeping, architectural, engineering, design, computer system design, scientific research, advertising, marketing, photography, translation, and veterinary

Management of Companies and Enterprises

Holding companies, corporate offices, management offices, and headquarters

Admin. Support and Waste Management Services

Administrative management (hotel management) and facilities support; employment placement, executive search, temporary help, and professional employer organizations; document preparation, telephone call centers, collection agencies, travel arrangement, security, pest control, janitorial, landscaping, carpet cleaning, packing and labeling, trade show organizer, and auctioneers

Educational and Health Services

Educational Services

Private schools and universities and support services for education (college selection, test preparation, and guidance counseling)

Health Care and Social Assistance

Private ambulatory health, hospitals, nursing and residential care, and social assistance (care for children, elderly, and disabled, emergency relief, vocational and rehabilitation services)

Leisure and Hospitality

Arts, Entertainment, and Recreation

Performing arts, spectator sports, museums, historical sites, zoos, parks, amusement, and gambling

Accommodation and Food Services

Hotels, RV parks, food, and drinking places

Other Services

Repair (autos, electronics, machinery, and appliances); personal (hair, nail, skin, weight reduction, and tattoos); funeral homes; dry-cleaning and laundry services; pet care, parking lots, astrology, coin machines, dating, escort, future telling, life coaching, and personal fitness trainer; associations (churches, grant making, social advocacy, and unions)

Government (Public)

Federal Government

Civilian federal employees including the U.S. Postal Service

State Government

Includes state universities and hospitals

Local Government

Includes local schools, community colleges, and local hospitals; township, city, and county employees such as fire fighters and park rangers

Ohio Department of Job and Family Services
Office of Workforce Development
P.O. Box 1618
Columbus, OH 43216-1618



Bureau of Labor Market Information Business Principles for Workforce Development

- Partner with the workforce and economic development community.
- Develop and deploy new information solution tools and systems for the workforce and economic development community.
- Provide products and services that are customer- and demand-driven.
- Be known as an important and reliable source for information solutions that support workforce development goals and outcomes.

This periodical is published under the direction of Bureau Chief Byron Archer. For further information, visit <http://OhioLMI.com> or call the Ohio Bureau of Labor Market Information at **1-888-296-7541** option 6, or **(614) 752-9494**.

If you would like to receive email notification when this publication is posted on our website, call **(614) 752-9494** or email ContactLMI@jfs.ohio.gov to be placed on the email notification list.

Mike DeWine, Governor
Jon Husted, Lt. Governor
State of Ohio
<http://Ohio.gov>

Matt Damschroder, Director
Ohio Department of Job and Family Services
<http://jfs.ohio.gov>

Office of Workforce Development
<http://jfs.ohio.gov/owd/>

Bureau of Labor Market Information
<http://OhioLMI.com>

This institution is an equal opportunity provider and employer.
A proud partner of the American Job Center network.