

Ohio Economic Profile

Clark County

Ohio Department of Job and Family Services
Office of Workforce Development

July 2021

1. Employment Percent by Industry

The table below shows how jobs are distributed throughout the county by industry. The higher the percentage, the more workers there are in the industry. Multiple years are shown to demonstrate how employment in the industries may have shifted over time. However, percent change across years does not necessarily indicate growth or decline in employment by industry.

1a. Employment Percent by Industry

Industry Name	Percent Annual Employment in Industry		
	2004	2010	2019
Health Care and Social Assistance	18.7%	19.1%	16.7%
Manufacturing	16.1%	13.9%	16.0%
Educational Services	10.7%	9.7%	10.6%
Retail Trade	12.8%	11.9%	10.6%
Accommodation and Food Services	8.4%	8.9%	8.8%
Finance and Insurance	3.9%	5.2%	5.3%
Transportation and Warehousing	4.1%	5.8%	5.2%
Administrative and Support Services	2.5%	3.5%	4.2%
Wholesale Trade	3.6%	3.9%	4.0%
Public Administration	3.9%	4.0%	3.7%
Management of Companies and Enterprises	2.1%	2.6%	3.7%
Other Services (except Public Administration)	4.0%	3.8%	3.4%
Construction	3.3%	2.2%	2.4%
Professional, Scientific, and Technical Services	1.4%	2.0%	1.8%
Real Estate and Rental and Leasing	1.1%	1.0%	1.0%
Agriculture, Forestry, Fishing and Hunting	1.1%	0.9%	0.9%
Arts, Entertainment, and Recreation	0.9%	0.7%	0.8%
Information	0.6%	0.6%	0.4%
Utilities	0.4%	0.4%	0.4%
Mining, Quarrying, and Oil and Gas Extraction	0.1%	0.1%	0.2%

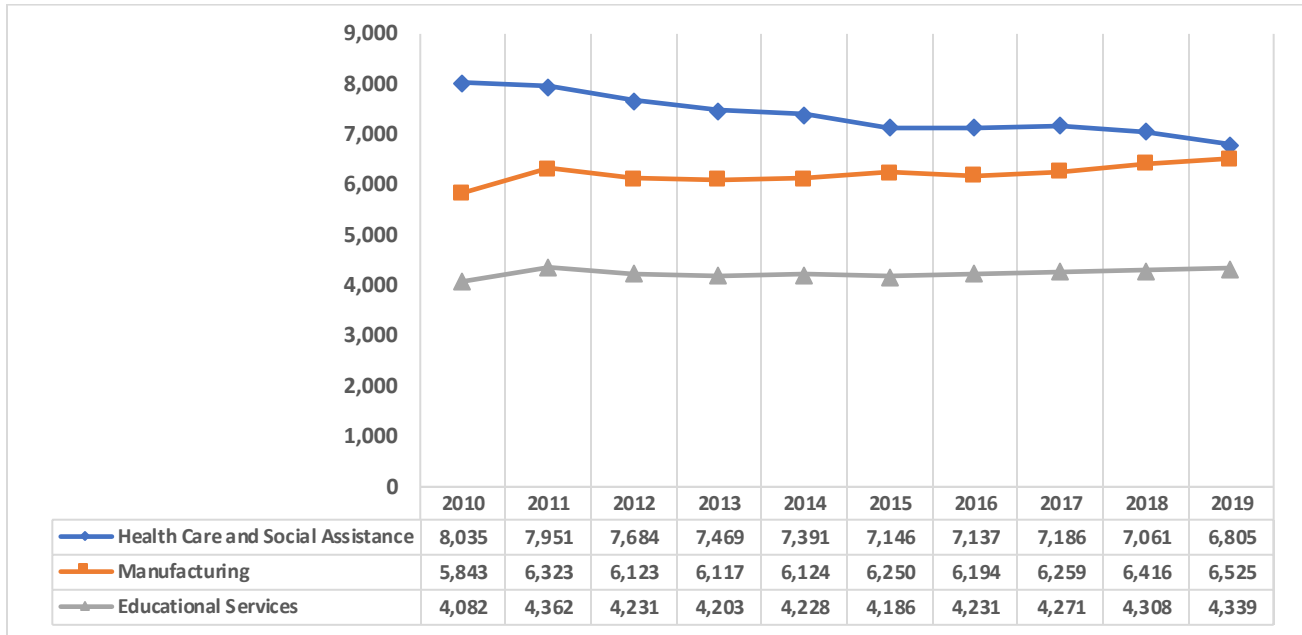
Source: U.S. Census Bureau, Quarterly Workforce Indicators, excludes federal government.

*Data non-disclosable as it does not meet U.S. Census Bureau publication standards. Columns may not sum to 100 percent due to both U.S. Census Bureau methodology and the effects of rounding. The difference between summed percentages (<100%) and 100 is not the employment share of the non-disclosed industry.

2. Employment, Wage and Firm Size Trends

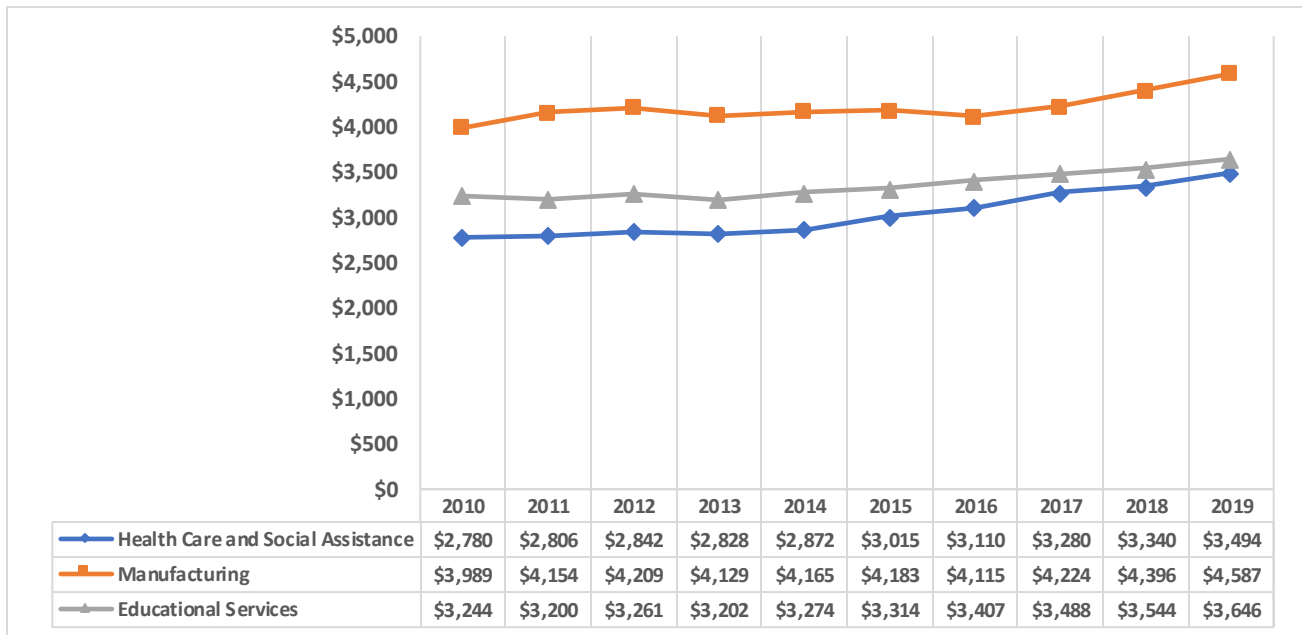
The next series of tables and graphs provide more information on the top 3 industry shares of county employment for the most recent year identified in the previous chart. Detailed information includes annual employment and wage trends for the three sectors. Employment and wage trends show fluctuations and indicate growth or decline over the years.

2a. Employment Trends–Health Care and Social Assistance, Manufacturing, and Educational Services



Source: U.S. Census Bureau, Quarterly Workforce Indicators, excludes federal government.

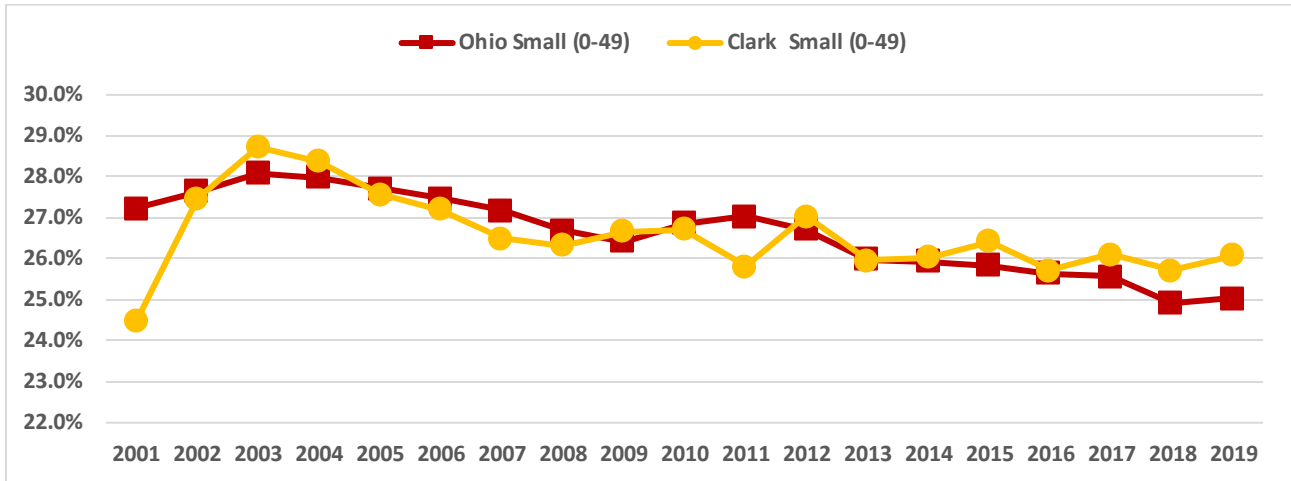
2b. Wage Trends – Health Care and Social Assistance, Manufacturing, and Educational Services



Source: U.S. Census Bureau, Quarterly Workforce Indicators, excludes federal government.

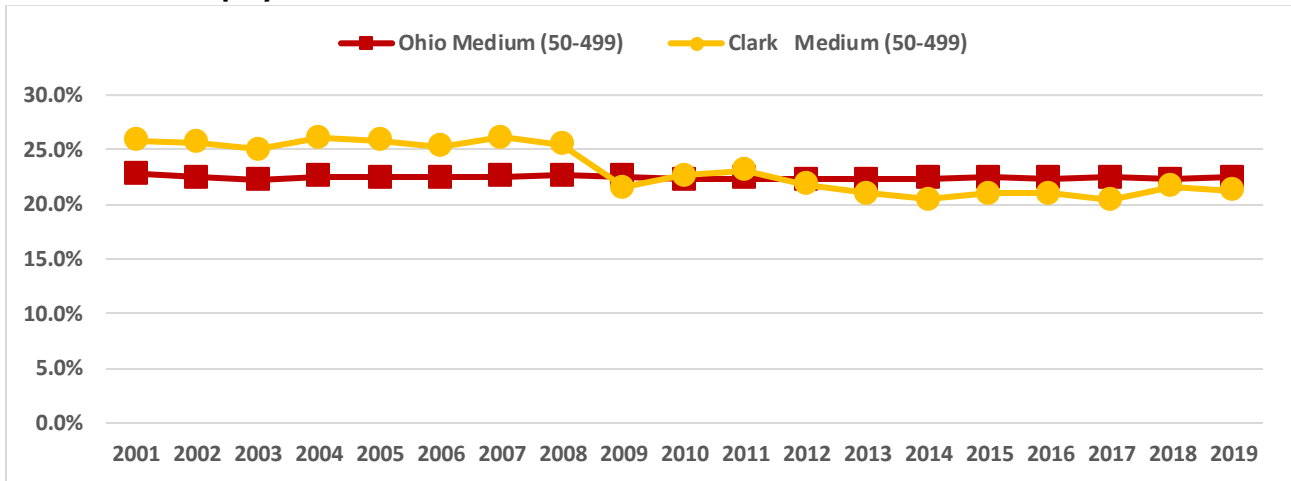
The following three charts compare the percentage of employment in firm size between the county and Ohio. Tables comparing firms with 0-49 employees (small firms), 50-499 employees (medium firms), and 500+ employees (large firms) are shown. When a large firm dominates an area, downturns in that industry will have a greater impact on a county than when employment is dispersed among many small or mid-size firms.

2c. Percent of Employment in Small Firms



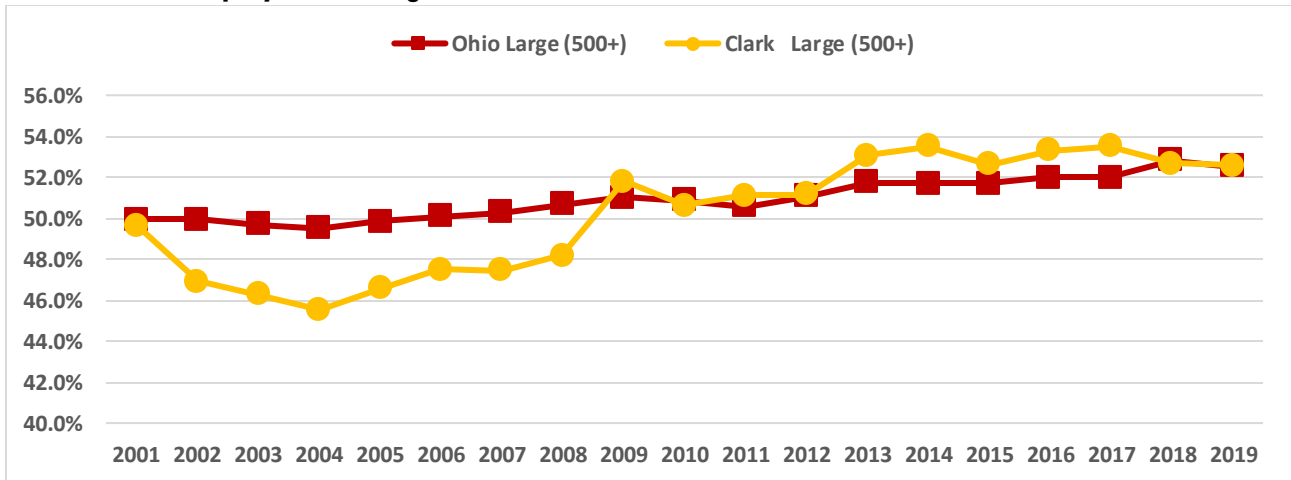
Source: U.S. Census Bureau, Quarterly Workforce Indicators, private ownership only.

2d. Percent of Employment in Medium Firms



Source: U.S. Census Bureau, Quarterly Workforce Indicators, private ownership only.

2e. Percent of Employment in Large Firms



Source: U.S. Census Bureau, Quarterly Workforce Indicators, private ownership only.

3. Online Job Postings

The following section provides a count of online job advertisements for the county. It is a snapshot of one aspect of the labor market and provides a look at labor demand by industry within the county.

3a. Online Job Postings by Industry, 1/1/2020 – 12/31/2020

Industry	Ads
Health Care and Social Assistance	1,405
Retail Trade	1,160
Manufacturing	628
Transportation and Warehousing	554
Accommodation and Food Services	491
Professional, Scientific, and Technical Services	409
Finance and Insurance	307
Public Administration	262
Administrative and Support and Waste Management and Remediation Services	236
Wholesale Trade	204
Arts, Entertainment, and Recreation	176
Other Services (except Public Administration)	154
Management of Companies and Enterprises	82
Real Estate and Rental and Leasing	79
Educational Services	69
Information	52
Construction	50
Utilities	10
Total	6,328

Source: TalentNeuron, 2021. Job advertisements counted are those posted in OhioMeansJobs.com, Monster, Indeed, LinkedIn, Career Builder, online newspapers and many others. The use of TalentNeuron reflects a change in methodology used in previous reports and data should not be compared to earlier reports.

*Excludes job advertisements in unclassified establishments (NAICS 999999) and establishments for which industry was unavailable.

3b. Top Occupations with the Most Area Online Job Ads, 1/1/2020 – 12/31/2020

Occupations	Ads
Heavy and Tractor-Trailer Truck Drivers	896
Registered Nurses	591
First-Line Supervisors of Retail Sales Workers	277
Retail Salespersons	251
Order Fillers, Wholesale and Retail Sales	249
Stock Clerks- Stockroom, Warehouse, or Storage Yard	243
Light Truck or Delivery Services Drivers	193
Customer Service Representatives	188
Laborers and Freight, Stock, and Material Movers, Hand	148
Medical Assistants	137

Source: TalentNeuron, 2021.

3c. Top Employers with the Most Area Online Job Ads, 1/1/2020 – 12/31/2020

Employer	Ads
Bon Secours Health System	605
Amazon	544
Children's Hospital	293
Alion Science	180
Humana Inc.	160
Konecranes	118
Shipt	114
Speedway	110
Dole Food Company	102
Navistar	99

Source: TalentNeuron, 2021.

3d. Top Certifications for Online Job Ads, 1/1/2020 – 12/31/2020

Certifications	Ads
Driver's License	1,138
Commercial Driver's License	982
Class A Commercial Driver's License	769
Certified Registered Nurse	465
Security clearance	370
HAZMAT	288
Certification in Cardiopulmonary Resuscitation	254
Basic Life Support	244
Licensed Practical Nurse	203
Commission on Collegiate Nursing Education	189

Source: TalentNeuron, 2021.

3e. Top Skills for Online Job Ads, 1/1/2020 – 12/31/2020

Skills	Ads
Operations	2,262
Analysis	1,194
Nursing	1,131
Innovation	824
Prescription medications	688
Talent acquisition	687
Care plans	666
Testing	657
Implementing	639
English speaker	615

Source: TalentNeuron, 2021.

4. Industry Turnover Rates

The following table looks at industry turnover rates for Ohio and by county. Turnover rates are calculated from stable employment (employment that lasted one calendar quarter with the same employer) and are an indicator of job churn. Industries with high churn will have more openings to replace workers than industries with low churn. It should be noted that this calculation does not include short-term employment that lasts less than a full quarter.

4a. Industry Turnover Rates, Statewide and County

Industry	Ohio				Clark County			
	2019Q1	2019Q2	2019Q3	2019Q4	2019Q1	2019Q2	2019Q3	2019Q4
All NAICS Sectors	8.6%	8.1%	9.1%	10.2%	9.3%	8.7%	9.6%	9.8%
Health Care and Social Assistance	7.6%	7.9%	7.8%	9.3%	7.9%	8.4%	9.0%	9.8%
Manufacturing	5.6%	5.4%	5.3%	6.0%	6.3%	5.5%	4.7%	6.9%
Educational Services	6.9%	4.7%	3.3%	7.9%	7.9%	6.0%	2.9%	6.3%
Retail Trade	11.1%	9.6%	10.5%	11.9%	11.5%	10.2%	11.1%	11.5%
Accommodation and Food Services	16.5%	16.3%	17.3%	22.5%	16.1%	16.0%	18.7%	20.7%
Finance and Insurance	4.7%	4.6%	5.0%	4.9%	5.3%	4.1%	5.2%	4.5%
Transportation and Warehousing	9.4%	7.8%	9.6%	10.8%	8.5%	7.6%	7.6%	8.7%
Administrative and Support Services	17.2%	16.3%	20.0%	19.2%	25.0%	21.9%	28.0%	23.6%
Wholesale Trade	6.1%	6.1%	6.4%	6.6%	6.1%	6.0%	6.4%	6.8%
Public Administration	3.5%	4.0%	5.3%	4.5%	5.0%	4.5%	6.7%	4.4%
Management of Companies and Enterprises	5.5%	5.5%	5.7%	5.6%	10.6%	8.9%	9.5%	9.0%
Other Services (except Public Administration)	8.8%	8.8%	9.5%	13.1%	7.8%	8.0%	8.4%	9.6%
Construction	7.8%	8.4%	14.6%	10.1%	5.7%	7.4%	16.5%	6.1%
Professional, Scientific, and Technical Services	7.7%	7.2%	7.5%	7.6%	9.1%	7.1%	8.1%	7.3%
Real Estate and Rental and Leasing	8.1%	8.3%	10.1%	9.7%	8.4%	7.5%	11.0%	10.7%
Agriculture, Forestry, Fishing and Hunting	9.1%	10.7%	16.9%	8.6%	8.8%	24.2%	11.8%	9.2%
Arts, Entertainment, and Recreation	11.7%	11.8%	24.1%	19.2%	17.3%	11.3%	28.1%	14.5%
Information	6.5%	6.4%	7.1%	8.2%	4.8%	4.3%	4.9%	5.1%
Utilities	3.2%	3.3%	3.6%	3.5%	N/A*	2.8%	3.7%	2.7%
Mining, Quarrying, and Oil and Gas Extraction	8.6%	8.7%	10.3%	8.7%	12.5%	8.0%	9.4%	N/A*

Source: U.S. Census Bureau, Quarterly Workforce Indicators, All ownerships, except federal government.

*Data non-disclosable as it does not meet U.S. Census Bureau publication standards.

5. High School Enrollment

The table below shows annual enrollment trends for high school seniors for public, private and charter schools by fiscal year, where FY 1 represents the school year 2018-2019. Enrollment is the count of students in October of the school year. School enrollment is important as it has implications for the workforce as well as the county's capacity to accommodate its students. Enrollment changes can be affected by boundary changes or redistricting. Also presented in the table is information regarding the number of OhioMeansJobs.com K-12 accounts that migrated to regular OMJ accounts.

5a. Number of High School Seniors

Fiscal Year	Number of 12th Graders*				OMJ K-12 Accts Migrate to Regular Acct***
	Public	Private	Charter	Total**	
2015	1,133	73	29	1,235	
2016	1,148	64	40	1,252	255
2017	1,146	58	42	1,246	474
2018	1,098	65	38	1,201	485
2019	1,093	62	19	1,174	884
2020	1,133	60	36	1,229	831

*Source: Ohio Department of Education. All data that represents <10 students is masked to ensure student privacy.

**Does not include <10 estimate.

***Source: Monster Government Solutions.

6. Local Area Talent Report

The next set of tables highlight resumes or talent in the local area. This data provides useful information on the workforce in the local area and presents a snapshot of skills and educational levels. The local reports are created using the Monster.com Talent Dashboard tool and are based on activity or logging into OhioMeansJobs.com or Monster.com in the previous three years. The workforce skills table is organized in ascending order and starts with the skill reported least often and ends with the most reported skill.

Resume Snapshot (April 2021)

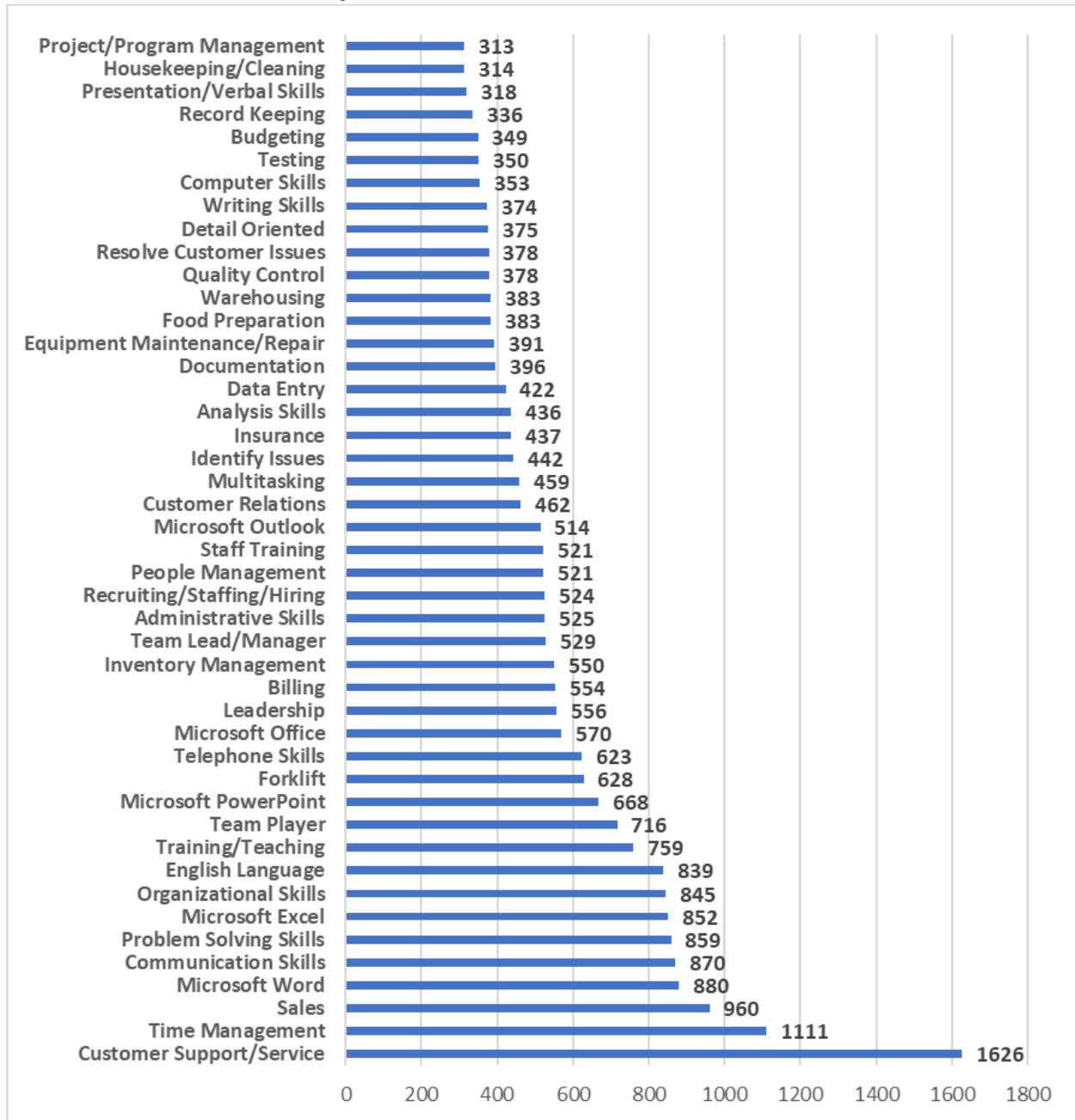
There were 1.5 million total resumes in OhioMeansJobs.com of Ohioans and others willing to relocate to Ohio. Resume counts for the county, veterans and restored citizens are shown below. Note: resumes for restored citizens are for individuals incarcerated in the Ohio Department of Rehabilitation and Correction who had an active resume and a release date in 2021.

County	Total Resumes	Total Veteran Resumes	Total Restored Citizen Resumes	Total Individuals with a Disability Resumes
Clark	11,577	861	5	30

Source: Monster.com and Monster Government Solutions.

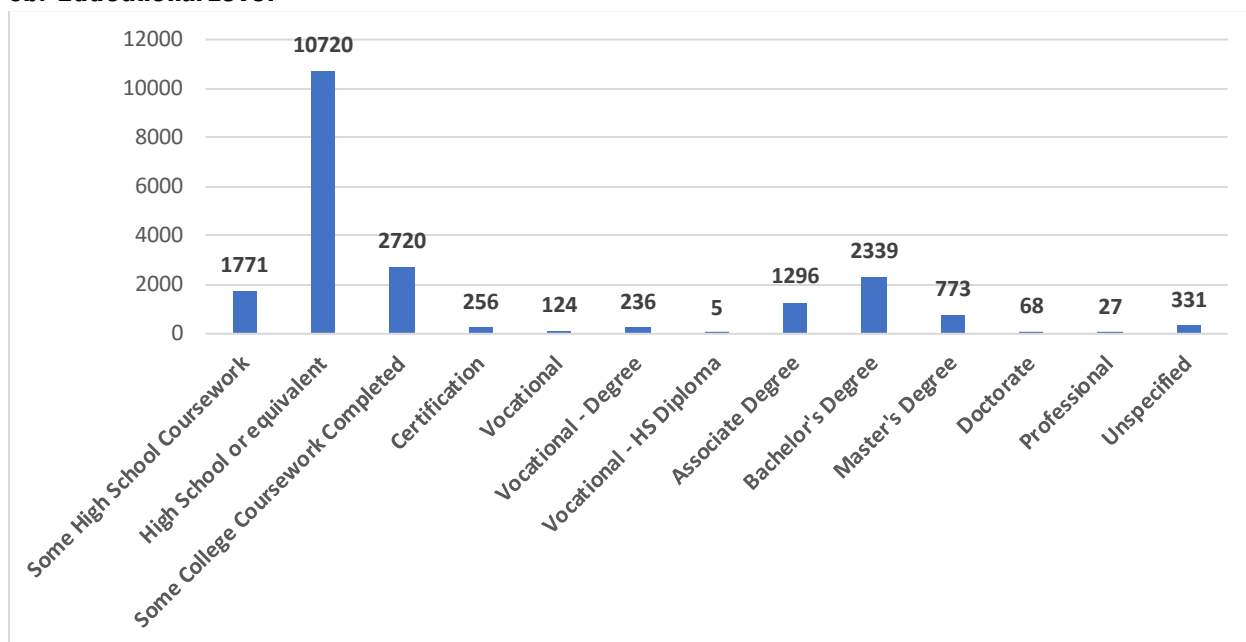
*County was determined based on home/returning address provided by incarcerated individuals.

6a. Number of Resumes with Top 45 Workforce Skills



Source: Monster Government Solutions, April 2021.

6b. Educational Level



Source: Monster Government Solutions, April 2021. See "Quick Guide to Understanding the County Economic Health Reports" for description of educational categories.

7. Educational Attainment

The following table shows the distribution of educational attainment by age group for county residents. Educational attainment refers to the highest level of education completed.

7a. Educational Attainment by Age Group

Age categories	Less than 9th grade	9th to 12th grade, no diploma	High school graduate (includes equivalency)	Some college, no degree	Associate's degree	Bachelor's degree	Graduate or professional degree	Total
18 to 24 years	183	1,422	5,267	4,267	459	528	50	12,176
25 to 34 years	338	1,399	4,801	4,884	1,442	1,822	860	15,546
35 to 44 years	336	1,296	4,801	3,385	1,492	2,161	1,191	14,662
45 to 64 years	695	2,789	14,648	7,638	4,051	3,968	2,500	36,289
65 years and over	1,064	2,476	10,647	5,097	1,618	2,556	2,177	25,635

Source: American Community Survey, 5-year estimates, 2015-2019.

8. Veteran Employment at the Local Level

The following table represents a snapshot of veteran and nonveteran labor force population (i.e., estimate of the employed and those looking for work); the labor force participation rate (i.e., percent of the total population participating in the labor force); and the unemployment rate (i.e., percent of the labor force that is unemployed). Veterans are those who have ever served on active duty in the U.S. Armed Forces, Reserves, or National Guard.

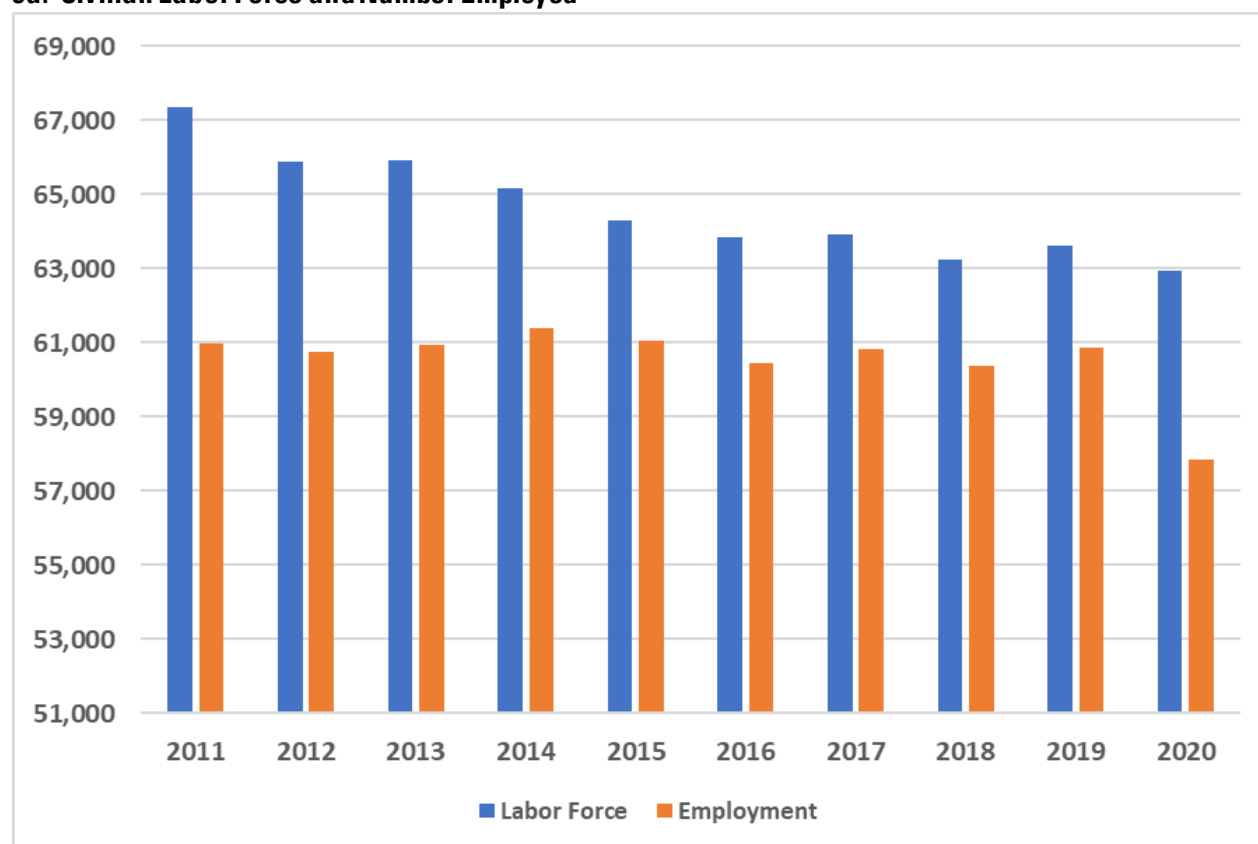
8a. County Veteran and Nonveteran Employment Estimates

	Nonveterans	Veterans
Labor Force Population	60,184	4,426
Labor Force Population Rate	76.6%	76.3%
Unemployment Rate	6.4%	3.3%

Source: American Community Survey, 18-64-year-olds, 5-year estimates, 2015-2019.

9. Civilian Labor Force and Commuting Patterns

The next set of tables look at the civilian labor force and commuting patterns of workers in the county. The civilian labor force is the sum of the employed and unemployed. It is based on civilians 16 years of age and over who are working or seeking work. It excludes military personnel, persons in institutions, those studying or keeping house full-time, retirees, and volunteer workers. This is the available workforce, and used in conjunction with commuting patterns data, one can see where workers in the county live and work. Commuting information is based on all jobs held. Commuting trends data are also presented to see inflow and outflow trends of workers, including the top work counties for out-commuters and top home counties for in-commuters.

9a. Civilian Labor Force and Number Employed

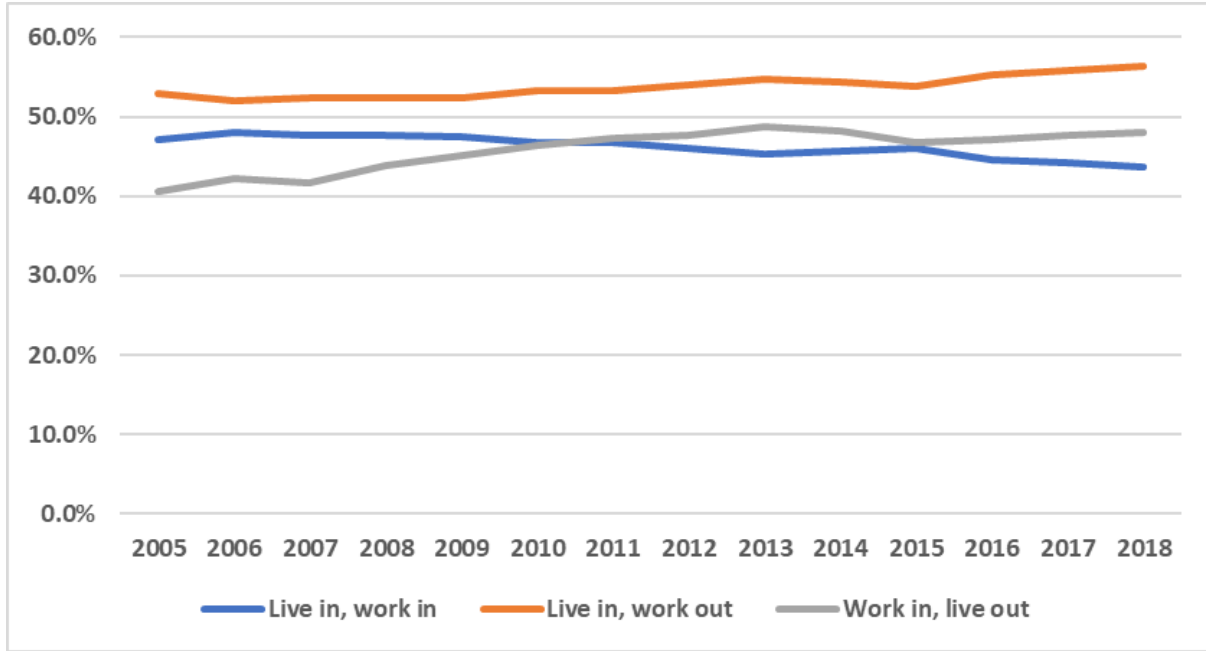
Source: U.S. Department of Labor, Bureau of Labor Statistics, Local Area Unemployment Statistics.

9b. Commuting Patterns, 2005 – 2018

	2005	2010	2018
# of workers who live and are employed here	30,053	24,897	24,999
# of workers who live here, but work in another county	33,779	28,458	32,224
# of workers who work here, but live in another county	20,566	21,600	23,077

Source: U.S. Census Bureau, OnTheMap. Includes all jobs, 2nd quarter only.

9c. Commuting Trends



Source: U.S. Census Bureau, OnTheMap. Includes all jobs, 2nd quarter only.

9d. Commuting Trends for Out-Commuters – Live in County, but Work in Another County, 2018

Top Work Counties for Out-Commuters	
Montgomery County, OH	7,835
Franklin County, OH	4,092
Greene County, OH	3,840
Champaign County, OH	2,076
Madison County, OH	1,820
Hamilton County, OH	1,750
Miami County, OH	1,510
Union County, OH	977
Butler County, OH	778
Cuyahoga County, OH	557

Source: U.S. Census Bureau, OnTheMap. Includes all jobs, 2nd quarter only.

9e. Commuting Trends for In-Commuters – Work in County, but Live in Another County, 2018

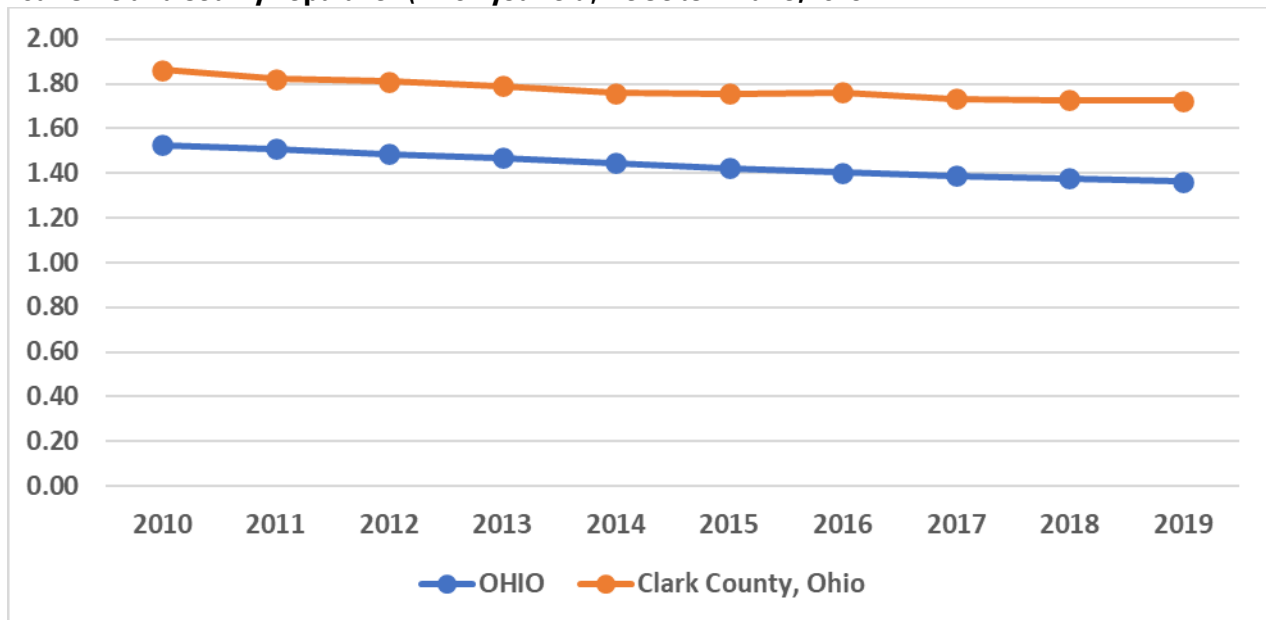
Top Home Counties for In-Commuters	
Montgomery County, OH	3,797
Greene County, OH	3,308
Champaign County, OH	2,358
Franklin County, OH	1,608
Miami County, OH	1,436
Hamilton County, OH	741
Butler County, OH	625
Madison County, OH	548
Warren County, OH	498
Logan County, OH	444

Source: U.S. Census Bureau, OnTheMap. Includes all jobs, 2nd quarter only.

10. Area Population to Jobs

The graph below and map on the next page look at the population to jobs ratio. The prime working-age population consists of those ages 18 to 64. However, not everyone in the working-age population is employed – they may be going to school, caring for children or others, or retired. As the population-to-jobs ratio increases, there are more workers living in the county than there are jobs, meaning there will be more competition for jobs in that county. Workers in high-ratio counties may be more likely to commute to other counties for work. A lower population-to-jobs ratio would indicate the county could have a higher ratio of in-commuters. This will be rare, but a population-to-jobs ratio less than one would indicate there are more jobs than workers. The graph below compares the county population to jobs ratio to the statewide ratio. The map shows population to jobs ratio for all counties.

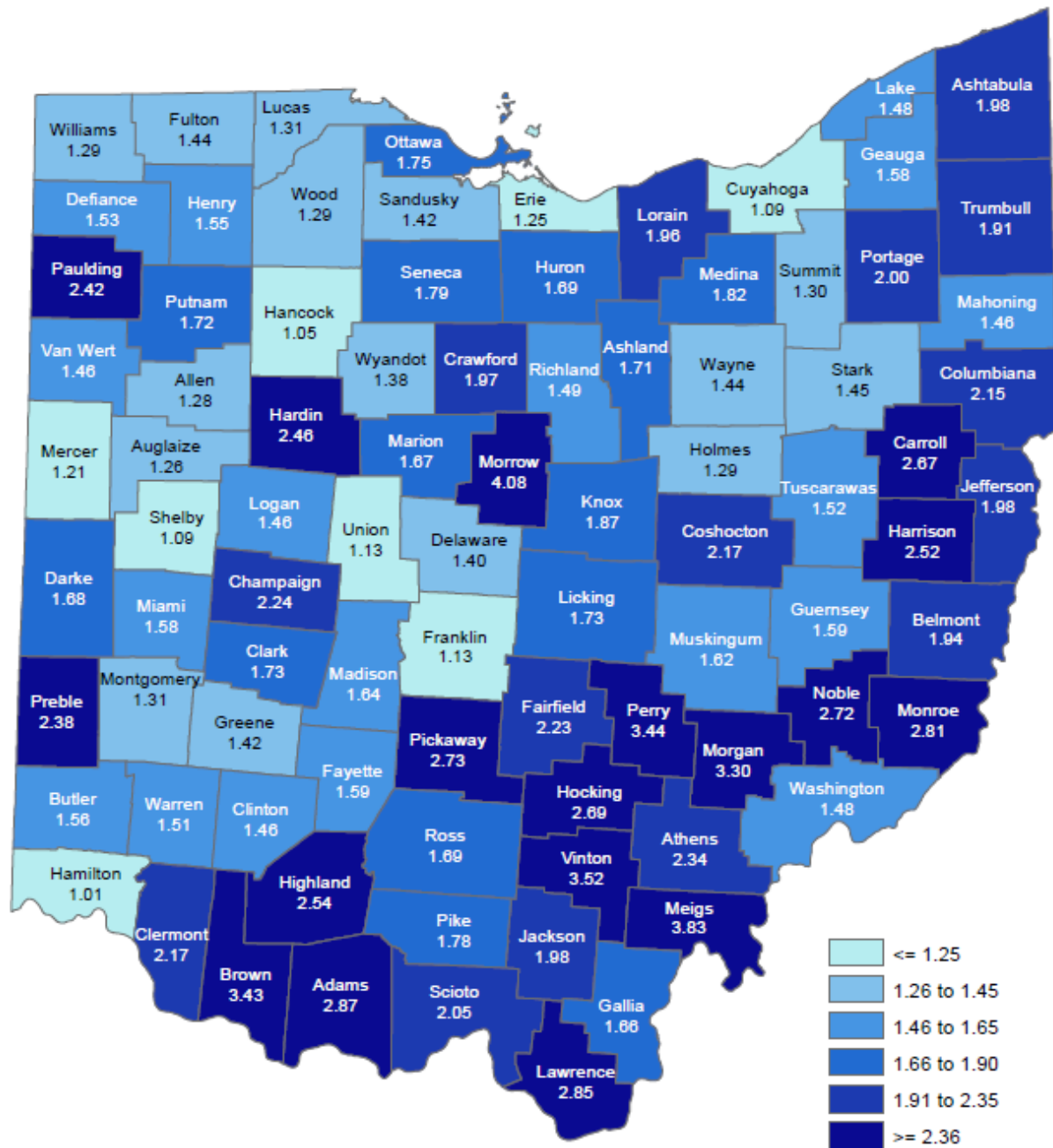
10a. Ohio and County Population (18-64-year-old)* to Jobs Ratio, 2019**



*Source: U.S. Census Bureau.

**Source: U.S. Department of Labor, Bureau of Labor Statistics, Quarterly Census of Employment and Wages.

10b. Ohio County Population* (18-64-year-old) to Jobs** Ratio Map, 2019



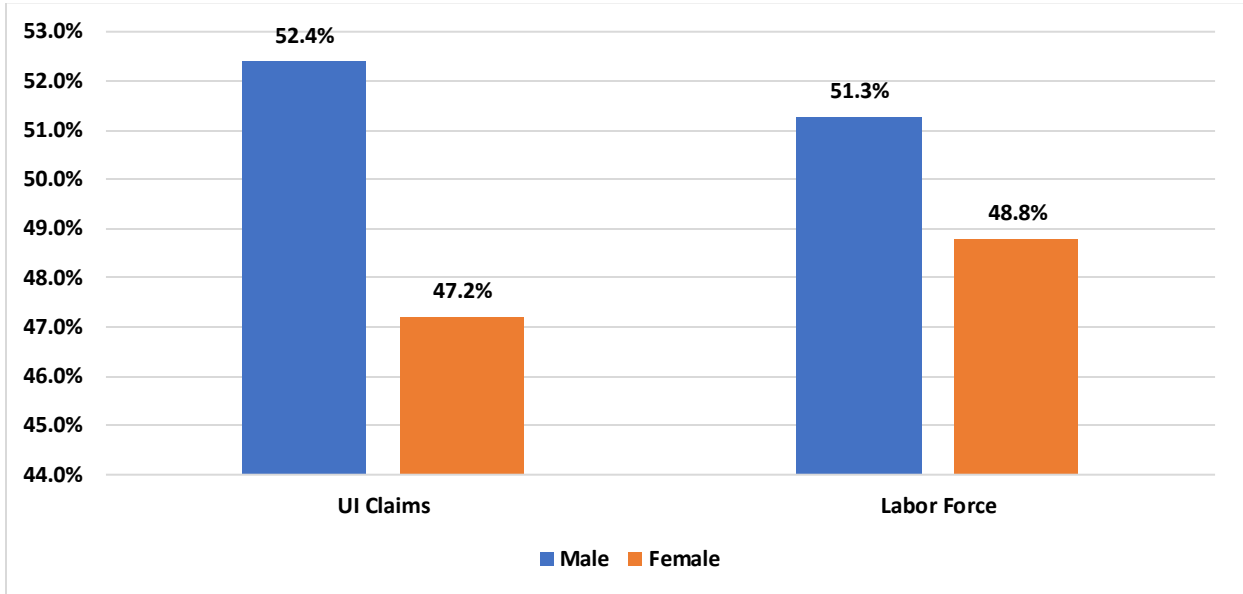
*Source: U.S. Census Bureau.

**Source: U.S. Department of Labor, Bureau of Labor Statistics, Quarterly Census of Employment and Wages.

11. Profile of UI Claims

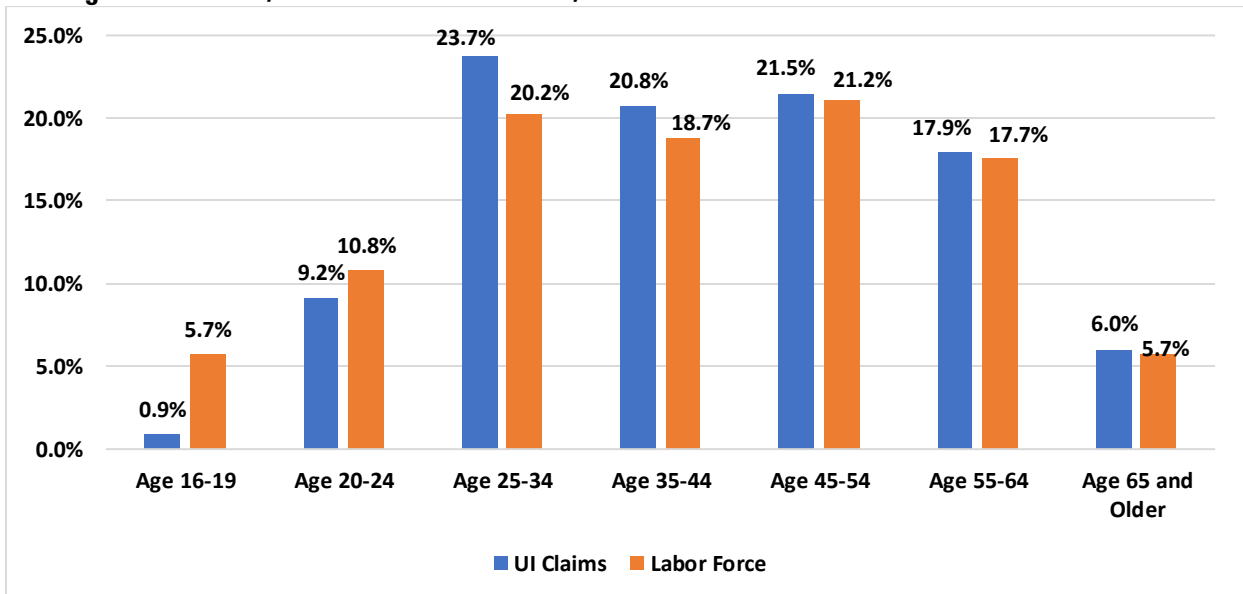
The next set of charts compares demographic characteristics of unemployment insurance claimants and people in the labor force for the county. These graphs can show if some segments of the labor force are filing higher proportions of claims. However, certain industries with seasonal work patterns and/or typical shut down periods, such as construction and manufacturing will have higher proportion of men than women. Differences between the labor force and UI claimants can be used to target intervention and training programs.

11a. Gender, UI Claims vs Labor Force, 2020



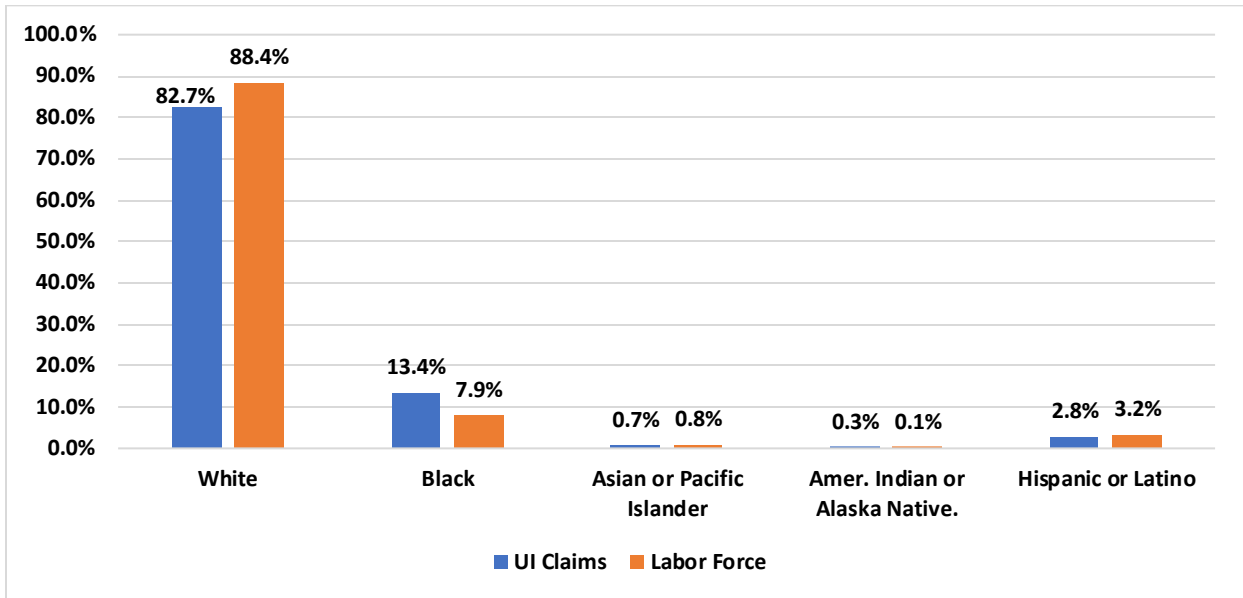
Source: Ohio Bureau of Labor Market Information.

11b. Age Distribution, UI Claims vs Labor Force, 2020



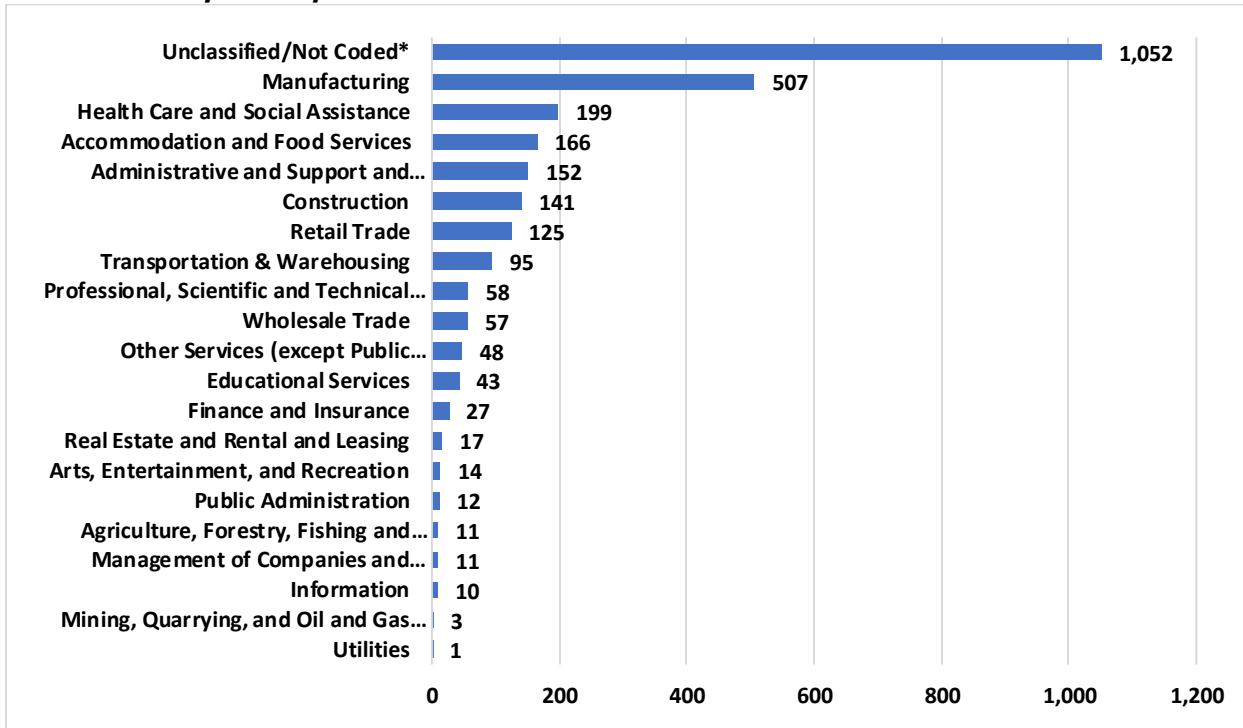
Source: Ohio Bureau of Labor Market Information.

11c. Race, UI Claims vs Labor Force, 2020



Source: Ohio Bureau of Labor Market Information.

11d. UI Claims by Industry, 2020



Source: Ohio Bureau of Labor Market Information.

*Unclassified/Not Coded industries coded as NAICS '999999' or claims with an unspecified employer.

Ohio Dept. of Job and Family Services
Office of Workforce Development
P.O. Box 1618
Columbus, OH 43216



Bureau of Labor Market Information Business Principles for Workforce Development

- Partner with the workforce and economic development community.
- Develop and deploy new information solution tools and systems for the workforce and economic development community.
- Provide products and services that are customer- and demand-driven.
- Be known as an important and reliable source for information solutions that support workforce development goals and outcomes.

Acknowledgments: The Office of Workforce Development produced this report under the direction of Bureau Chief Coretta Pettway. For further information, visit OhioLMI.com or call the Ohio Bureau of Labor Market Information at **1-888-296-7541** option 6, or **(614) 752-9494**.

Mike DeWine, Governor
Jon Husted, Lt. Governor

State of Ohio
Ohio.gov

Matt Damschroder, Director

Ohio Department of Job and Family Services
jfs.ohio.gov

Office of Workforce Development
jfs.ohio.gov/owd/

Bureau of Labor Market Information
OhioLMI.com

This institution is an equal opportunity provider and employer.
A proud partner of the American Job Center network.

This workforce product was funded by a grant awarded by the U.S. Department of Labor's Employment and Training Administration. The product was created by the recipient and does not necessarily reflect the official position of the U.S. Department of Labor. The Department of Labor makes no guarantees, warranties, or assurances of any kind, express or implied, with respect to such information, including any information on linked sites and including, but not limited to, accuracy of the information or its completeness, timeliness, usefulness, adequacy, continued availability, or ownership. This product is copyrighted by the institution that created it. Internal use by an organization and/or personal use by an individual for non-commercial purposes is permissible. All other uses require the prior authorization of the copyright owner.